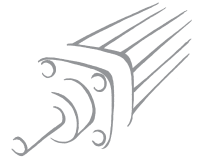


# CYLINDER SERIES ISO 1552 (EX ISO 6431), Ø 160-200 mm WITH ROUND BARREL



1

Cylinders made to ISO 1552 available in various versions and with a wide range of accessories:

- Configuration with or without magnet
- Double-acting – single- or through-rod
- NBR gaskets or FKM/FPM (high temperature)
- Available with mounted intermediate hinge
- Special configurations on request

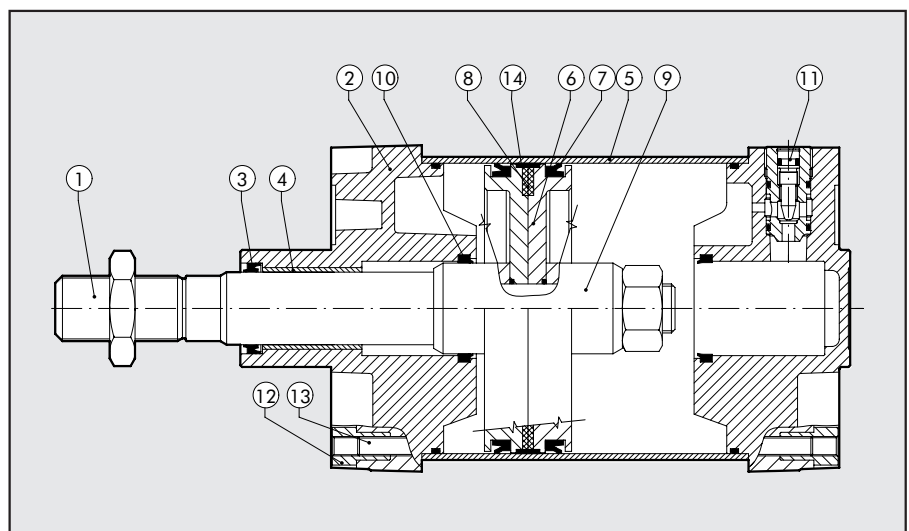


## TECHNICAL DATA

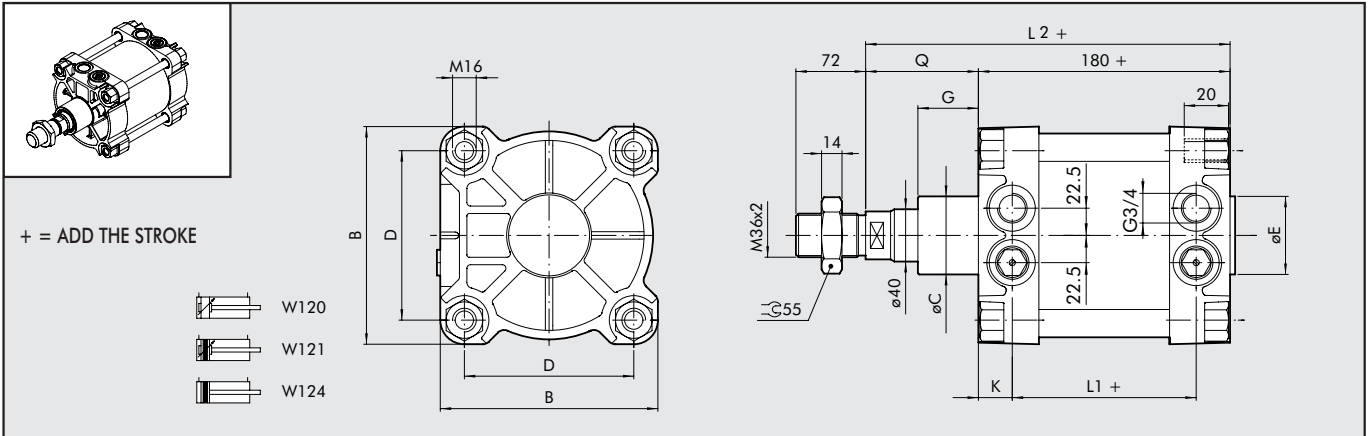
Operating pressure	P	max 10 bar (1 MPa)
Temperature range	T <sub>e</sub>	-10°C to +70°C
Fluid temperature	T <sub>f</sub>	-10°C to +70°C
Design		Round barrel with tie rods
Materials		Heads: die cast aluminium
		Piston rod: thick chromed steel
		Jacket: aluminium
		Piston: aluminium with technopolimer guide belt
		Gaskets: NBR or FKM/FPM
Forces generated at 6 bar (tensile stress)		See GENERAL TECHNICAL DATA PAGE 1.1/05
Standard strokes	mm	25-50-75-80-100-125-150-200-250-300-350-400-500-600-700-800-900-1000
Weight		See GENERAL TECHNICAL DATA PAGE 1.1/06

## COMPONENTS

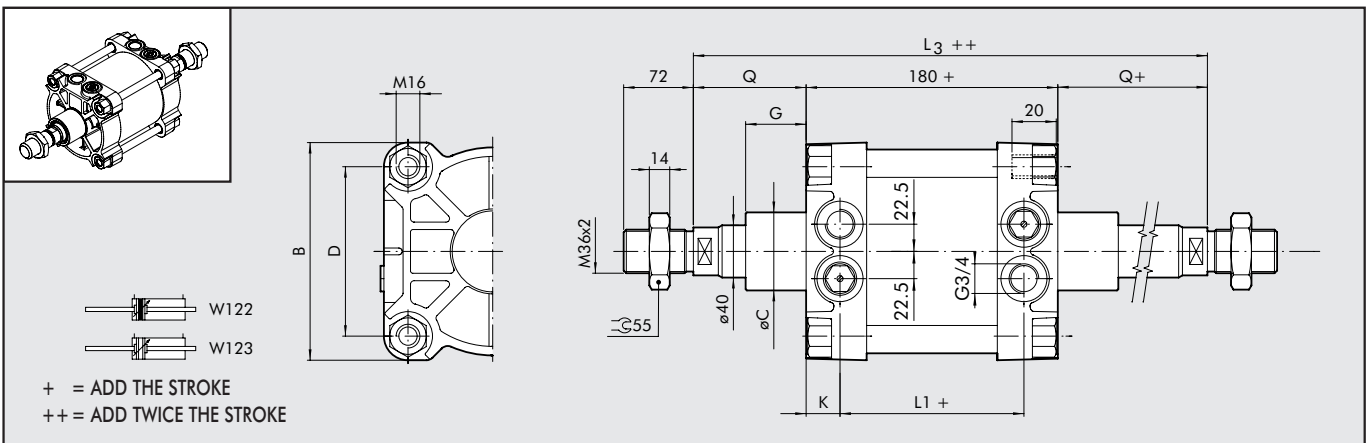
- ① PISTON ROD: C45 steel or stainless steel, thick chromed
- ② HEAD: die cast aluminium
- ③ PISTON ROD GASKET: NBR or FKM/FPM
- ④ GUIDE BUSHING: sintered bronze
- ⑤ BARREL: drawn anodised aluminium alloy
- ⑥ PISTON: aluminium
- ⑦ PISTON GASKET: NBR or FKM/FPM
- ⑧ MAGNET: plastoferrite
- ⑨ CUSHIONING CAP: aluminium
- ⑩ CUSHIONING GASKET+ Static O-rings: NBR or FKM/FPM
- ⑪ CUSHIONING NEEDLE: OT 58 with needle out movement safety system even when fully open
- ⑫ SCREWS: galvanised steel
- ⑬ TIE RODS: galvanised steel
- ⑭ GUIDE BELT: technopolimer



### DIMENSIONS OF STANDARD VERSION

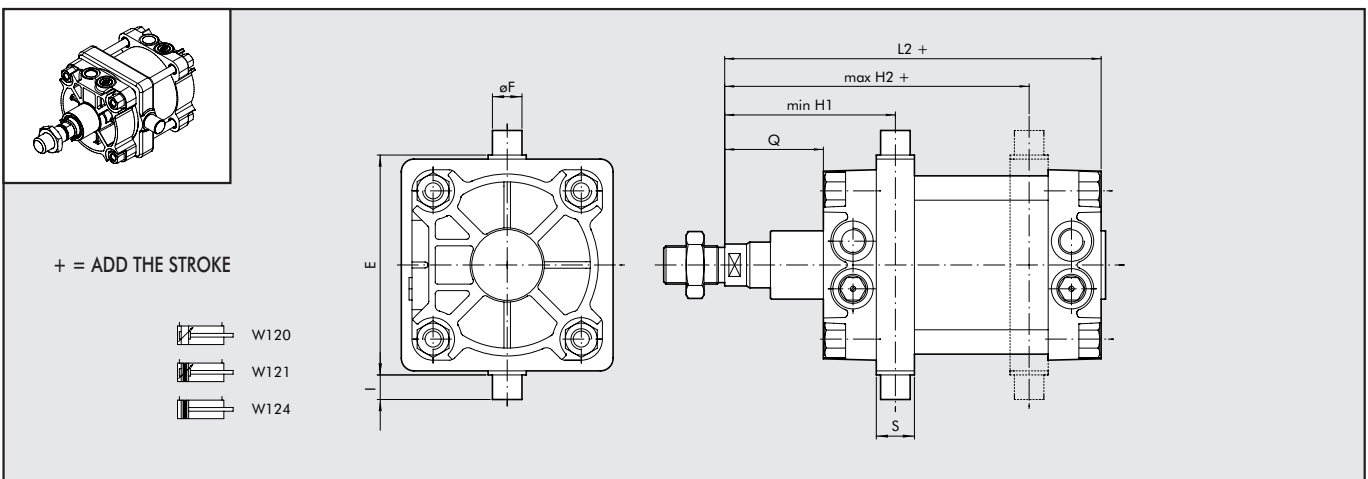


### DIMENSIONS OF THROUGH-ROD VERSION



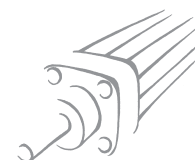
Ø	B	Ø C	Ø E	D	G	L <sub>1</sub>	L <sub>2</sub>	L <sub>3</sub>	Q	K
160	180	65	65	140	50	124	260	338	80	28
200	220	75	75	175	60	122	275	370	95	29

### DIMENSIONS OF VERSION WITH INTERMEDIATE HINGE



Ø	E	Ø F	H1	H2	I	L <sub>2</sub>	Q	S
160	200	32	150	190	32	260	80	40
200	250	32	165	205	32	275	95	40

For the missing values, refer to standard cylinders.  
In your order, please specify the desired value for H1



**KEY TO CODES FOR ROUND BARREL**

CYL	W 1 2 1 TYPE	1 6 0 DIAMETER-EXECUTION	0 0 5 0 STROKE	0 2 0 0 EXECUTION
W120	Double-acting, cylinder cushioned, non magnetic	160 200	+ 0025 ÷ 2800 mm	<b>Specify H1 value ONLY for version with intermediate hinge</b>
W121	Double-acting cylinder, cushioned	XA3 160 stainless steel piston rod		
W122	Double-acting cylinder, cushioned, through-rod	XA4 200 stainless steel piston rod		
W123	Double-acting cylinder, cushioned, through-rod, non magnetic	VA3 160 FKM/FPM gasket, stainless steel piston rod		
W124	Double-acting cylinder, non-cushioned	VA4 200 FKM/FPM gasket, stainless steel piston rod		
		KA3 160 FKM/FPM gasket, C45 piston rod		
		KA4 200 FKM/FPM gasket, C45 piston rod		
		AA3 160+intermediate hinge		
		AA4 200+intermediate hinge		

+ Maximum recommended strokes. Higher values can create operating problems

**VERSION WITH SHAPED BARREL**

An alternative to the round barrel version is a version with a shaped barrel. The technical data, components and dimensions are the same as for the round barrel version

Note: Type with intermediate hinge not available



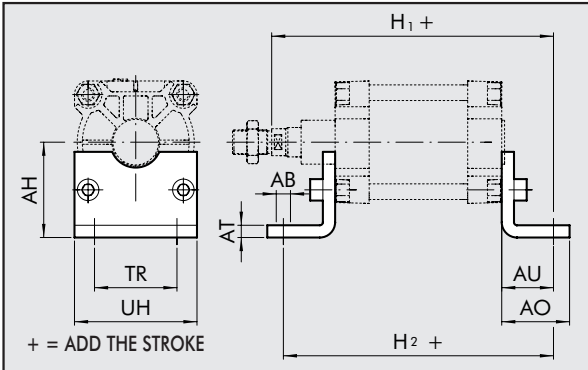
**KEY TO CODES FOR SHAPED BARREL**

CYL	1 2 1 TYP	1 6 0 DURCHMESSER	0 0 5 0 HUBLÄNGE	A	N
120	Double-acting, cushioned, non-magnetic	160 200	+ 0025 ÷ 2800 mm	A C45 chromed piston rod, Z Stainless steel chromed, piston rod	N NBR gaskets V FKM/FPM gaskets
121	Double-acting, cushioned	SA3 160 ohne Magnet			
122	Through-rod	SA4 200 ohne Magnet			
124	Double-acting, non-cushioned				

+ Maximum recommended strokes. Higher values can create operating problems

## ACCESSORIES: FIXINGS

### FOOT - MODEL A

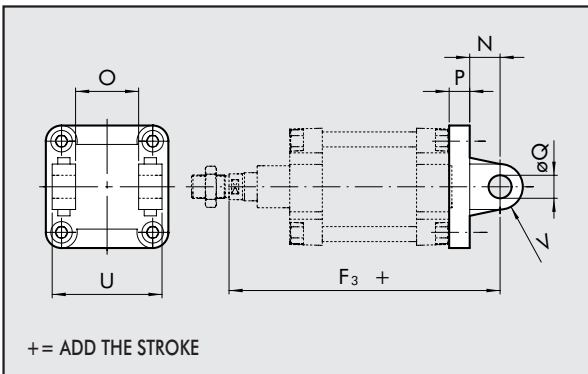


Code	Ø	AB	AH	AO	AT	AU	H <sub>1</sub>	H <sub>2</sub>	TR	UH	Weight [g]
------	---	----	----	----	----	----	----------------	----------------	----	----	------------

W0951602001	160	18	115	80	10	60	319	300	115	180	2400
W0952002001	200	22	135	120	10	70	345	320	135	220	4000

Note: Individually packed with 2 screws.

### FEMALE HINGE - MODEL B

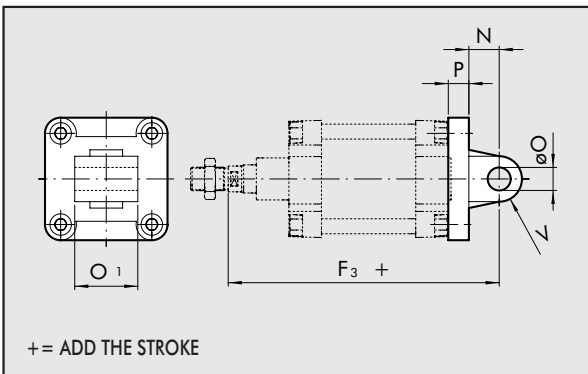


Code	Ø	U	O	ØQ	P	N	F <sub>3</sub>	V	Weight [g]
------	---	---	---	----	---	---	----------------	---	------------

W0951602003	160	170	90	30	20	35	314	25	3300
W0952002003	200	170	90	30	25	35	335	25	4300

Note: Supplied complete with 4 screws, 4 washers, 2 snap rings.

### MALE HINGE - MODEL BA

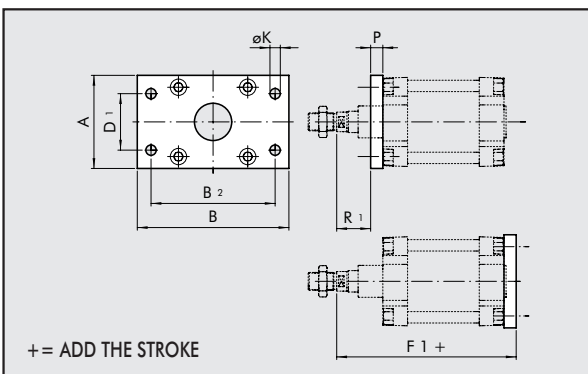


Code	Ø	O <sub>1</sub>	ØO	P	N	F <sub>3</sub>	V	Weight [g]
------	---	----------------	----	---	---	----------------	---	------------

W0951602004	160	90	30	20	35	314	25	2150
W0952002004	200	90	30	25	35	335	25	3550

Note: Supplied complete with 4 screws, 4 washers.

### FLANGE - MODEL C (FRONT AND REAR)



Code	Ø	A	B	B <sub>2</sub>	D <sub>1</sub>	ØK	R <sub>1</sub>	P	F <sub>1</sub>	Weight [g]
------	---	---	---	----------------	----------------	----	----------------	---	----------------	------------

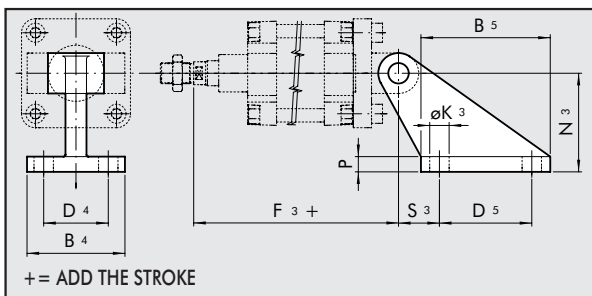
W0951602002	160	180	270	230	115	18	59	20	279	6900
W0952002002	200	225	312	270	135	22	70	25	300	12800

Note: Individually packed with 4 screws.



### CETOP COUNTER-HINGE - MODEL GL

Code    Ø    B<sub>4</sub>    B<sub>5</sub>    D<sub>4</sub>    D<sub>5</sub>    N<sub>2</sub>    N<sub>3</sub>    S<sub>3</sub>    ØK<sub>3</sub>    P    F<sub>3</sub>    Weight [g]

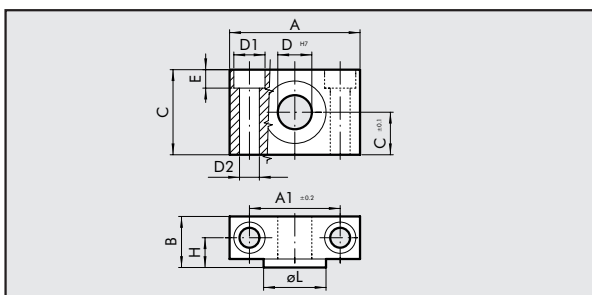


W0951602008	160	110	154	63	110	55	140	50	18	20	314	2300
W0951602008	200	110	154	63	110	60	140	50	18	20	335	2300

Note: Supplied complete with 4 screws, 4 washers.

### COUNTER-HINGE MODEL EL

Code    Ø    A    A<sub>1</sub>    B    C    C<sub>1</sub>    D<sub>1</sub>    D<sub>2</sub>    D    E    H    ØL    Weight [g]

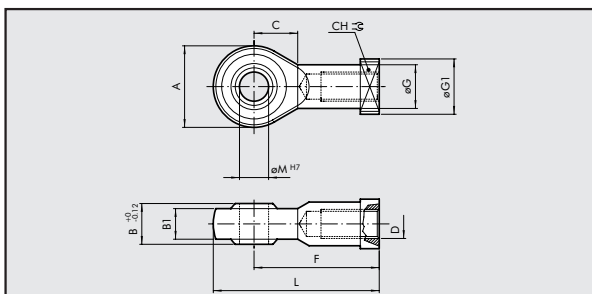


W0951602009	160	92	60	40	60	30	25	17	32	16.5	22.5	48	2740
W0951602009	200	92	60	40	60	30	25	17	32	16.5	22.5	48	2740

Note: Supplied with 4 securing screws

### ROD EYE - MODEL GA-M

Code    Ø    ØM    C    B<sub>1</sub>    B    A    L    F    D    ØG    CH    ØG<sub>1</sub>    Weight [g]

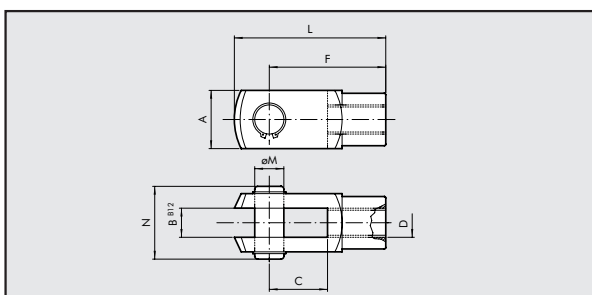


W0952002025	160	35	41	28	43	80	165	125	M36x2	46	50	58	1645
W0952002025	200	35	41	28	43	80	165	125	M36x2	46	50	58	1645

Note: Individually packed

### FORK - MODEL GK-M

Code    Ø    ØM    C    B    A    L    F    D    N    Weight [g]

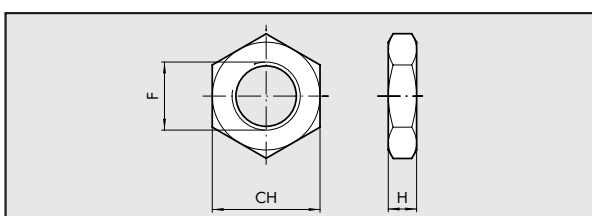


W0951602020	160	35	72	35	70	188	144	M36x2	84	3850
W0951602020	200	35	72	35	70	188	144	M36x2	84	3850

Note: Individually packed

### ROD NUT - MODEL S

Code    Ø    F    H    CH    Weight [g]



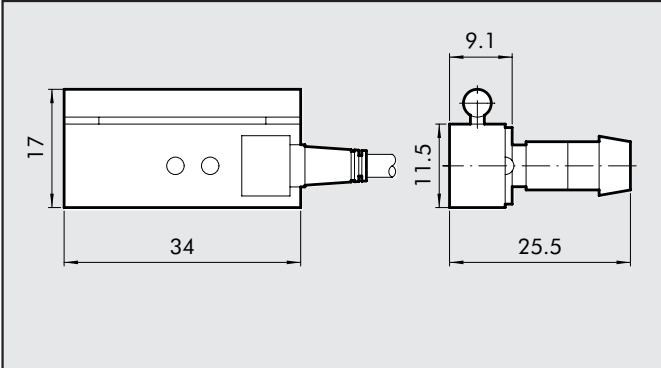
W0951602010	160	M36x2	14	55	170
W0951602010	200	M36x2	14	55	170

Note: Individually packed

## ACCESSORIES: MAGNETIC SENSORS

### MAGNETIC SENSOR

Code Description

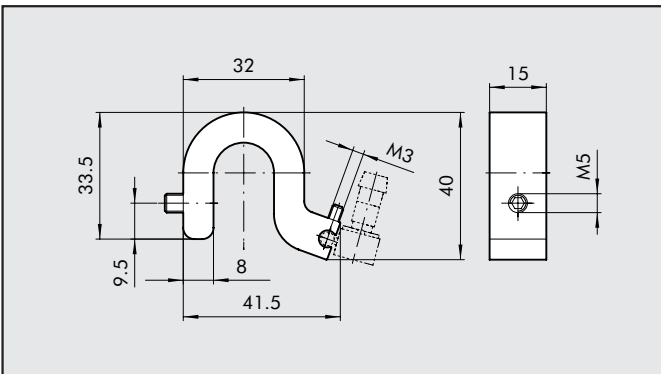


W0950000201	REED SENSOR ACC. DSM2-C525
W0950000222	E.HALL PNP SENSOR ACC. DSM3-N225
W0950000232	E.HALL NPN SENSOR ACC. DSM3-M225

Hinweis: Technische Daten siehe Katalog seite 1.1/93

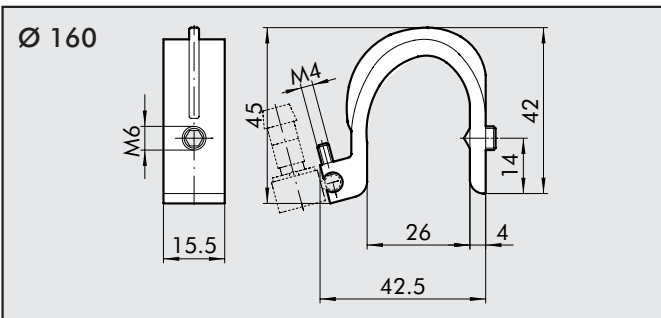
### SENSOR SUPPORT BRACKET FOR STANDARD VERSION (WITH ROUND BARREL)

Code Description

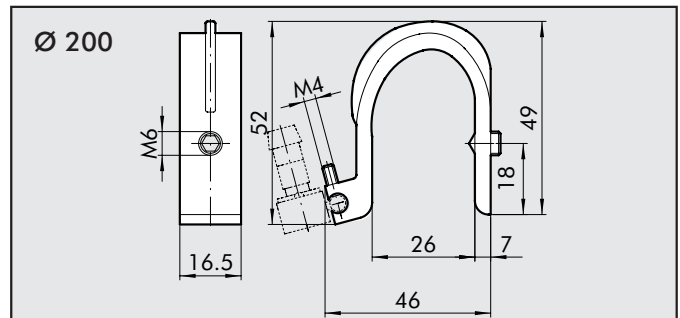


0951602093	BRACKET ACC. 160-200
------------	----------------------

### SENSOR SUPPORT BRACKET FOR OLD VERSION BARREL (SHAPED)



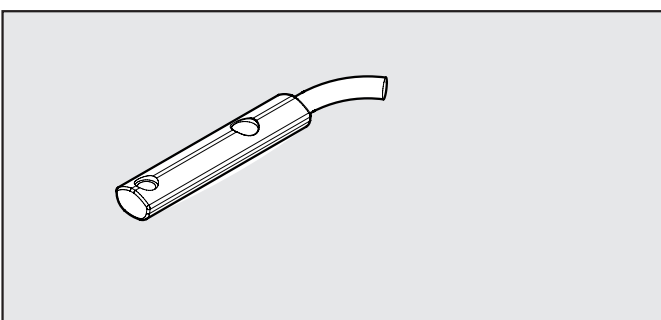
Code	Description
W0950000715	BRACKET ACC. ST 160



Code	Description
W0950000716	BRACKET ACC. ST 200

### RETRACTABLE SENSOR WITH INSERTION FROM ABOVE

Code Description

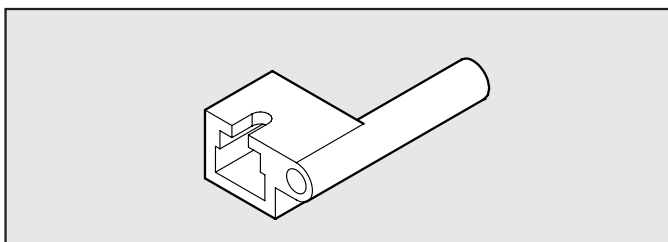


W0952025390	HALL N.O. SENSOR, VERTICAL INSERTION 2.5m
W0952029394	HALL N.O. SENSOR, VERTICAL INSERTION 300 mm M8
W0952022180	REED N.O. SENSOR, VERTICAL INSERTION 2.5m
W0952028184	REED N.O. SENSOR, VERTICAL INSERTION 300 mm M8
W0952125556	HALL N.O. SENSOR, VERTICAL INSERTION 2m ATEX

For technical data, refer to page 1.1/97



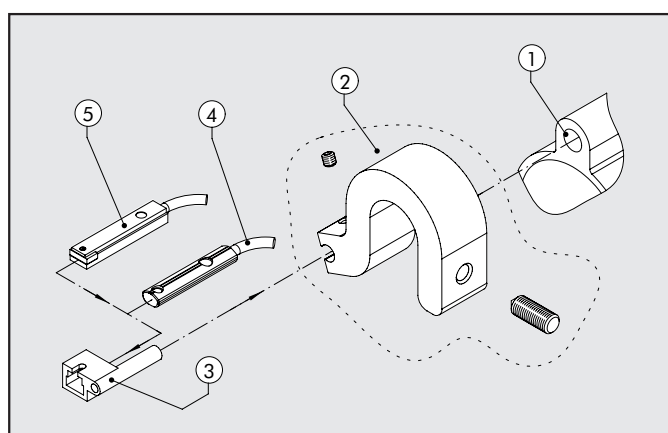
### ADAPTOR FOR RETRACTABLE SENSOR



Code	Description
W0950001001	Adaptor DSS005 for DST/ST brackets

### ASSEMBLY DIAGRAM

- ① ISO 15552 cylinder with traditional barrel
- ② Sensor bracket mod. ST (Ø160 e 200)
- ③ Adaptor
- ④ Retractable sensor with insertion from above
- ⑤ Retractable sensor



### NOTES

Blank area for notes, consisting of multiple horizontal lines.