

S31 Series



- 1/4" NPT
- Brass Body
- 3-Way Direct Acting
- Normally Open



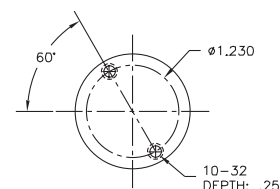
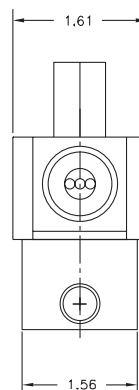
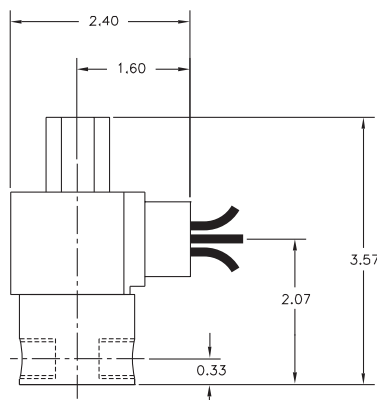
Materials	Seals:	Nitrile, Viton®, Ethylene Propylene or Teflon®
	Orifices: Top Main	Stainless Steel Stainless Steel
Electrical	Standard Housing:	Encapsulated Waterproof Conduit (NEMA 4/4X)
	Optional Housings:	Metallic Conduit, Explosion-proof (NEMA 7), Grommet, Open Frame, Junction Box (single or dual knockouts), DIN; Contact GC Valves Customer Service for others.
	Standard Voltages:	24, 120, 240 AC 60 Hz; 50 Hz available 6, 12, 24 DC; Contact GC Valves Customer Service for Additional Voltages.
	Voltage Tolerance:	±10% of applicable voltage
	Coil Classes:	F, H, N
	Standard Lead Length:	24 inch
Operating Temperature	Ambient (Nominal):	32° to 125°F
Mounting	Position	Any
Approvals*	Agency	UL Listed, UL Recognized, CSA Approved

* Not available for all variations

© Registered Trademark of DuPont Co.

Dimensions/Weight

Weight (lbs.)
1.2



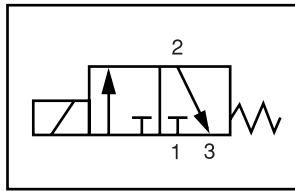
GC Valves Customer Service: 800-828-0484 (7:30am to 4pm ET) or 800-582-4232 (7:30am to 4pm PT)



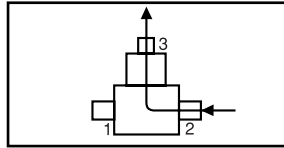
S314 – 1/4" NPT, Brass Body, Normally Open

Valve Selection List

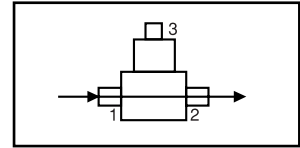
Normally Open



Energized



De-Energized



Pipe Size NPT	Orifice Size IN		C _v		Operating Pressure Differential (psi)						Max Fluid Temp. °F	Seal Material	Power Consumption (Watts)		Model Code (120V/60HZ — 110V/50HZ Shown)
	Main	Top	Main	Top	Maximum								AC	DC	
					Air/Gas		Water		Light Oil						
					AC	DC	AC	DC	AC	DC					
1/4	3/64	3/64	.05	.05	150	150	150	150	—	—	295	EPR	8	9	S314GF02C8BC3
	3/32	1/16	.20	.10	80	80	80	80	—	—	295	EPR	8	9	S314GF02C8BW7
	3/32	3/32	.20	.20	45	45	45	45	—	—	295	EPR	8	9	S314GF02C8BC9
	5/32	3/32	.41	.20	30	15	30	15	—	—	295	EPR	8	9	S314GF02C8BV9
1/4	3/64	3/64	.05	.05	150	150	150	150	150	150	180	Nitrile	8	9	S314GF02N8BC3
	3/32	1/16	.20	.10	80	80	80	80	80	80	180	Nitrile	8	9	S314GF02N8BW7
	3/32	3/32	.20	.20	45	45	45	45	45	45	180	Nitrile	8	9	S314GF02N8BC9
	5/32	3/32	.41	.20	30	15	30	15	30	15	180	Nitrile	8	9	S314GF02N8BV9
1/4	3/64	3/64	.05	.05	150	150	150	150	150	150	230	Viton	8	9	S314GF02V8BC3
	3/32	1/16	.20	.10	80	80	80	80	80	80	230	Viton	8	9	S314GF02V8BW7
	3/32	3/32	.20	.20	45	45	45	45	45	45	230	Viton	8	9	S314GF02V8BC9
	5/32	3/32	.41	.20	30	15	30	15	30	15	230	Viton	8	9	S314GF02V8BV9
1/4	3/64	3/64	.05	.05	150	150	150	150	150	150	366*	Teflon	8	9	S314GF02T8BC3
	3/32	1/16	.20	.10	80	80	80	80	80	80	366*	Teflon	8	9	S314GF02T8BW7
	3/32	3/32	.20	.20	45	45	45	45	45	45	366*	Teflon	8	9	S314GF02T8BC9
	5/32	3/32	.41	.20	30	15	30	15	30	15	366*	Teflon	8	9	S314GF02T8BV9

* Class H Coil Recommended for High Temperature Applications

GC Valves Customer Service: 800-828-0484 (7:30am to 4pm ET) or 800-582-4232 (7:30am to 4pm PT)

S314 – 1/4" NPT, Brass Body, Normally Open



Part Numbering

1	2	3	4	5	6	7	8	9	10	11	12	13
S	3	1	4	G	F	0	2	C	8	B	C	3
Series			Operating Mode	Housing*	Coil Class*	Voltage*		Seal Material	Body Material	Pipe Connection	Orifice Size (Main x Top)	
S31			4: Normally Open	G: Conduit	F: Class F	02: 120/60 110/50		C: EPR N: Nitrile V: Viton T: Teflon	8: Brass	B: 1/4" NPT	C3: 3/64" x 3/64" W7: 3/32" x 1/16" C9: 3/32" x 3/32" V9: 5/32" x 3/32"	
* See the "Engineering Guide" for additional voltages, variations and options.												

Coil Data

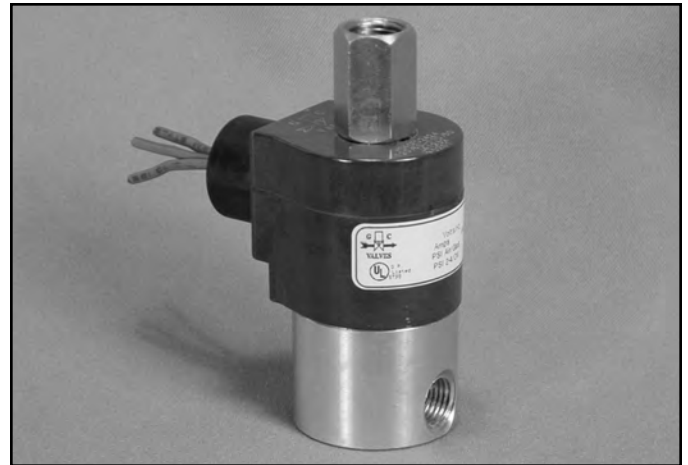
Coil Family	
Type	Size
All	S3

Frequency (Hz)	60	50
Nominal Power (VA)	Inrush	36
	Holding	16

S30 Series



- 1/4" NPT
- Brass Body
- 3-Way Direct Acting
- Normally Open



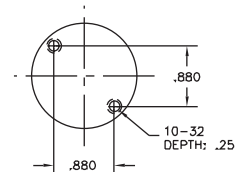
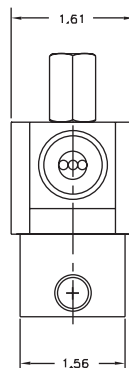
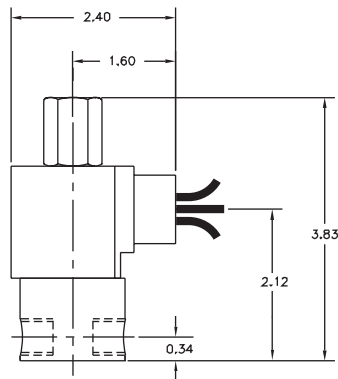
Materials	Seals:	Nitrile, Viton®, Ethylene Propylene or Teflon®
	Orifices: Top Main	Stainless Steel Brass
Electrical	Standard Housing:	Encapsulated Waterproof Conduit (NEMA 4/4X)
	Optional Housings:	Metallic Conduit, Explosion-proof (NEMA 7), Grommet, Open Frame, Junction Box (single or dual knockouts), DIN; Contact GC Valves Customer Service for others.
	Standard Voltages:	24, 120, 240 AC 60 Hz; 50 Hz available 6, 12, 24 DC; Contact GC Valves Customer Service for Additional Voltages.
	Voltage Tolerance:	±10% of applicable voltage
	Coil Classes:	F, H, N
	Standard Lead Length:	24 inch
Operating Temperature	Ambient (Nominal):	32° to 125°F
Mounting	Position	Any
Approvals*	Agency	UL Listed, UL Recognized, CSA Approved

* Not available for all variations

© Registered Trademark of DuPont Co.

Dimensions/Weight

Weight (lbs.)
1.2



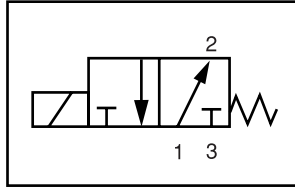
GC Valves Customer Service: 800-828-0484 (7:30am to 4pm ET) or 800-582-4232 (7:30am to 4pm PT)



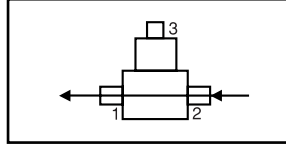
S304 – 1/4" NPT, Brass Body, Normally Open

Valve Selection List

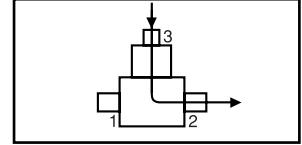
Normally Open



Energized



De-Energized



Pipe Size NPT	Orifice Size IN		C _v		Operating Pressure Differential (psi)						Max Fluid Temp. °F	Seal Material	Power Consumption (Watts)		Model Code (120V/60HZ — 110V/50HZ Shown)
	Main	Top	Main	Top	Maximum								AC	DC	
					Air/Gas		Water		Light Oil						
	AC	DC	AC	DC	AC	DC	AC	DC	AC	DC			Brass Body		
1/4	3/64	3/64	.05	.05	150	150	150	150	—	—	295	EPR	10	10	S304GF02C8AC3
	3/64	1/16	.05	.10	150	120	150	120	—	—	295	EPR	10	10	S304GF02C8BV1
	1/16	1/16	.08	.10	125	120	125	120	—	—	295	EPR	10	10	S304GF02C8BC5
	3/32	3/32	.18	.23	75	25	75	25	—	—	295	EPR	10	10	S304GF02C8BC9
	5/32	3/32	.41	.23	75	20	75	20	—	—	295	EPR	10	10	S304GF02C8BV7
1/4	3/64	3/64	.05	.05	150	150	150	150	150	150	180	Nitrile	10	10	S304GF02N8AC3
	3/64	1/16	.05	.10	150	120	150	120	150	120	180	Nitrile	10	10	S304GF02N8BV1
	1/16	1/16	.08	.10	125	120	125	120	125	120	180	Nitrile	10	10	S304GF02N8BC5
	3/32	3/32	.18	.23	75	25	75	25	75	25	180	Nitrile	10	10	S304GF02N8BC9
	5/32	3/32	.41	.23	75	20	75	20	75	20	180	Nitrile	10	10	S304GF02N8BV7
1/4	3/64	3/64	.05	.05	150	150	150	150	150	150	230	Viton	10	10	S304GF02V8AC3
	3/64	1/16	.05	.10	150	120	150	120	150	120	230	Viton	10	10	S304GF02V8BV1
	1/16	1/16	.08	.10	125	120	125	120	125	120	230	Viton	10	10	S304GF02V8BC5
	3/32	3/32	.18	.23	75	25	75	25	75	25	230	Viton	10	10	S304GF02V8BC9
	5/32	3/32	.41	.23	75	20	75	20	75	20	230	Viton	10	10	S304GF02V8BV7
1/4	3/64	3/64	.05	.05	150	150	150	150	150	150	366*	Teflon	10	10	S304GF02T8AC3
	3/64	1/16	.05	.10	150	120	150	120	150	120	366*	Teflon	10	10	S304GF02T8BV1
	1/16	1/16	.08	.10	125	120	125	120	125	120	366*	Teflon	10	10	S304GF02T8BC5
	3/32	3/32	.18	.23	75	25	75	25	75	25	366*	Teflon	10	10	S304GF02T8BC9
	5/32	3/32	.41	.23	75	20	75	20	75	20	366*	Teflon	10	10	S304GF02T8BV7

* Class H Coil Recommended for High Temperature Applications

GC Valves Customer Service: 800-828-0484 (7:30am to 4pm ET) or 800-582-4232 (7:30am to 4pm PT)

S304 – 1/4" NPT, Brass Body, Normally Open



Part Numbering

1	2	3	4	5	6	7	8	9	10	11	12	13
S	3	0	4	G	F	0	2	C	8	B	C	3
Series			Operating Mode	Housing*	Coil Class*	Voltage*		Seal Material	Body Material	Pipe Connection	Orifice Size (Main x Top)	
S30			4: Normally Open	G: Conduit	F: Class F	02: 120/60 110/50		C: EPR N: Nitrile V: Viton T: Teflon	8: Brass	B: 1/4" NPT	C3: 3/64" x 3/64" V1: 3/64" x 1/16" C5: 1/16" x 1/16" C9: 3/32" x 3/32" V7: 5/32" x 3/32"	
* See the "Engineering Guide" for additional voltages, variations and options.												

Coil Data

Coil Family	
Type	Size
All	S4

Frequency (Hz)	60	50
Nominal Power (VA)	Inrush	46
	Holding	20

- **1/4" NPT**
- **Brass Body**
- **3-Way Direct Acting**
- **Normally Open**

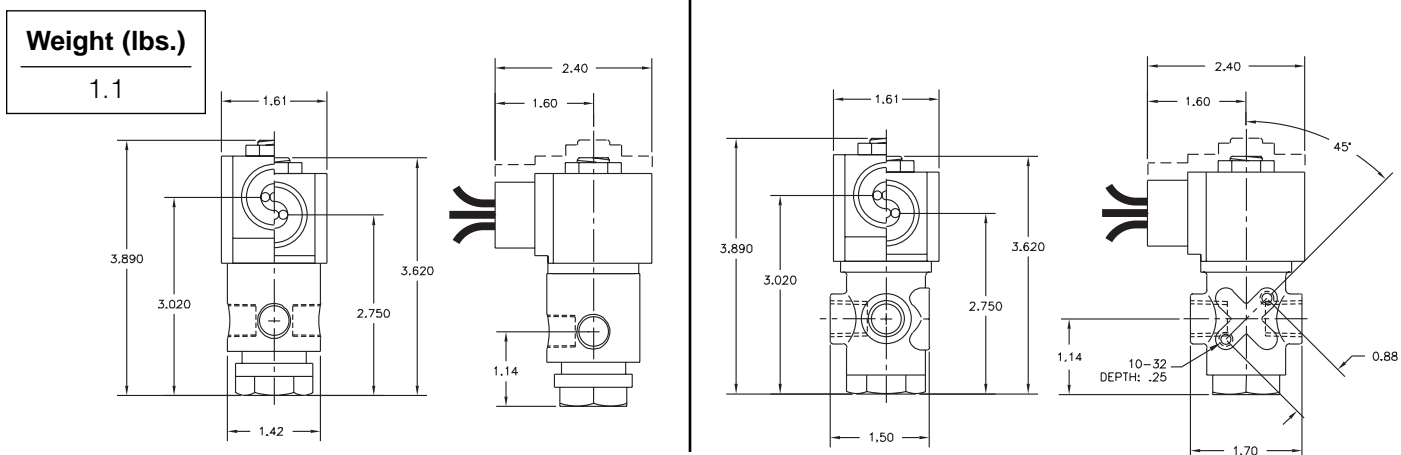


Materials	Seals:	Nitrile, Viton®, Ethylene Propylene
	Orifices:	Brass
Electrical	Standard Housing:	Encapsulated Waterproof Conduit (NEMA 4/4X)
	Optional Housings:	Metallic Conduit, Explosion-proof (NEMA 7), Grommet, Open Frame, Junction Box (single or dual knockouts), DIN; Contact GC Valves Customer Service for others.
	Standard Voltages:	24, 120, 240 AC 60 Hz; 50 Hz available 6, 12, 24 DC; Contact GC Valves Customer Service for Additional Voltages.
	Voltage Tolerance:	±10% of applicable voltage
	Coil Classes:	F, H, N
	Standard Lead Length:	24 inch
Operating Temperature	Ambient (Nominal):	32°F to 125°F
Mounting	Position	Any
Approvals*	Agency	UL Listed, UL Recognized, CSA Approved

* Not available for all variations

© Registered Trademark of DuPont Co.

Dimensions/Weight



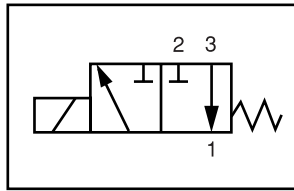
GC Valves Customer Service: 800-828-0484 (7:30am to 4pm ET) or 800-582-4232 (7:30am to 4pm PT)



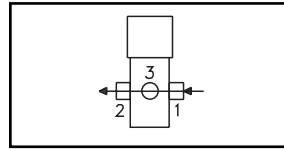
S334 – 1/4" NPT, Brass Body, Normally Open

Valve Selection List

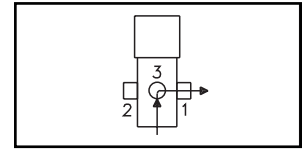
Normally Open



Energized



De-Energized



Pipe Size NPT	Orifice Size IN	C _v	Minimum	Operating Pressure Differential (psi)						Max Fluid Temp. °F	Seal Material	Power Consumption (Watts)		Model Code (120V/60HZ — 110V/50HZ) Shown	
				Maximum								AC	DC		
				Air/Gas		Water		Light Oil							
				AC	DC	AC	DC	AC	DC			AC	DC		
Reduced Power	1/4	1/16	.09	0	160	100	160	100	—	—	295	EPR	8	9	S334GF02C3BC5
	3/32	.15	0	100	50	100	50	—	—	295	EPR	8	9	S334GF02C3BC9	
	1/8	.26	0	50	30	50	30	—	—	295	EPR	8	9	S334GF02C3BD5	
1/4	1/16	.09	0	200	160	200	160	—	—	295	EPR	10	10	S334GF02C4BC5	
	3/32	.15	0	150	114	150	114	—	—	295	EPR	10	10	S334GF02C4BC9	
	1/8	.31	0	84	60	84	60	—	—	295	EPR	10	10	S334GF02C4BD5	
	11/64	.38	0	45	24	45	24	—	—	295	EPR	10	10	S334GF02C4BD8	
Reduced Power	1/4	1/16	.09	0	160	100	160	100	160	100	180	Nitrile	8	9	S334GF02N3BC5
	3/32	.15	0	100	50	100	50	100	50	180	Nitrile	8	9	S334GF02N3BC9	
	1/8	.26	0	50	30	50	30	50	30	180	Nitrile	8	9	S334GF02N3BD5	
1/4	1/16	.09	0	200	160	200	160	200	160	180	Nitrile	10	10	S334GF02N4BC5	
	3/32	.15	0	150	114	150	114	150	114	180	Nitrile	10	10	S334GF02N4BC9	
	1/8	.31	0	84	60	84	60	84	60	180	Nitrile	10	10	S334GF02N4BD5	
	11/64	.38	0	45	24	45	24	45	24	180	Nitrile	10	10	S334GF02N4BD8	
Reduced Power	1/4	1/16	.09	0	160	100	160	100	160	100	230	Viton	8	9	S334GF02V3BC5
	3/32	.15	0	100	50	100	50	100	50	230	Viton	8	9	S334GF02V3BC9	
	1/8	.26	0	50	30	50	30	50	30	230	Viton	8	9	S334GF02V3BD5	
1/4	1/16	.09	0	200	160	200	160	200	160	230	Viton	10	10	S334GF02V4BC5	
	3/32	.15	0	150	114	150	114	150	114	230	Viton	10	10	S334GF02V4BC9	
	1/8	.31	0	84	60	84	60	84	60	230	Viton	10	10	S334GF02V4BD5	
	11/64	.38	0	45	24	45	24	45	24	230	Viton	10	10	S334GF02V4BD8	

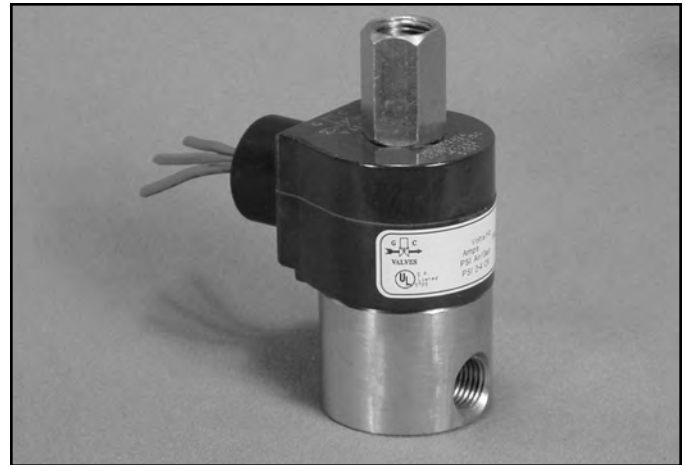
* Class H Coil Recommended for High Temperature Applications

GC Valves Customer Service: 800-828-0484 (7:30am to 4pm ET) or 800-582-4232 (7:30am to 4pm PT)

S31 Series



- 1/4" NPT
- Stainless Steel Body
- 3-Way Direct Acting
- Normally Open



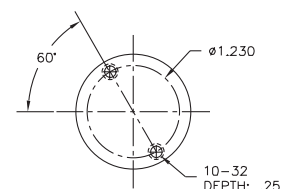
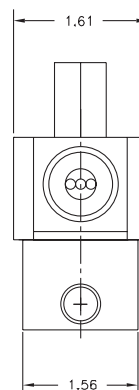
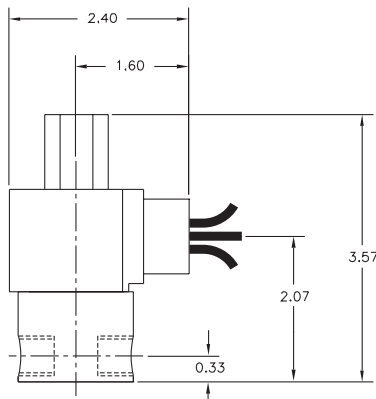
Materials	Seals:	Nitrile, Viton®, Ethylene Propylene or Teflon®
	Orifices: Top Main	Stainless Steel Stainless Steel
Electrical	Standard Housing:	Encapsulated Waterproof Conduit (NEMA 4/4X)
	Optional Housings:	Metallic Conduit, Explosion-proof (NEMA 7), Grommet, Open Frame, Junction Box (single or dual knockouts), DIN; Contact GC Valves Customer Service for others.
	Standard Voltages:	24, 120, 240 AC 60 Hz; 50 Hz available 6, 12, 24 DC; Contact GC Valves Customer Service for Additional Voltages.
	Voltage Tolerance:	±10% of applicable voltage
	Coil Classes:	F, H, N
	Standard Lead Length:	24 inch
Operating Temperature	Ambient (Nominal):	32° to 125°F
Mounting	Position	Any
Approvals*	Agency	UL Listed, UL Recognized, CSA Approved

* Not available for all variations

© Registered Trademark of DuPont Co.

Dimensions/Weight

Weight (lbs.)
1.2



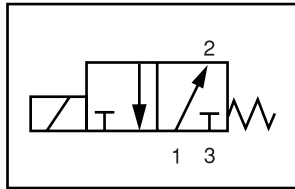
GC Valves Customer Service: 800-828-0484 (7:30am to 4pm ET) or 800-582-4232 (7:30am to 4pm PT)



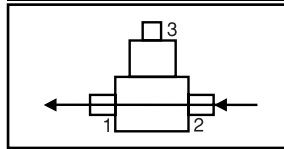
S314 – 1/4" NPT, Stainless Steel Body, Normally Open

Valve Selection List

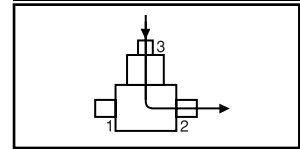
Normally Open



Energized



De-Energized



Pipe Size NPT	Orifice Size IN		C _v		Operating Pressure Differential (psi)						Max Fluid Temp. °F	Seal Material	Power Consumption (Watts)		Model Code (120V/60HZ — 110V/50HZ) Shown
	Main	Top	Main	Top	Air/Gas		Water		Light Oil				AC	DC	
					AC	DC	AC	DC	AC	DC					
1/4	3/64	3/64	.05	.05	150	150	150	150	—	—	295	EPR	8	9	S314GF02C3BC3
	3/32	1/16	.20	.10	80	80	80	80	—	—	295	EPR	8	9	S314GF02C3BW7
	3/32	3/32	.20	.20	45	45	45	45	—	—	295	EPR	8	9	S314GF02C3BC9
	5/32	3/32	.41	.20	30	15	30	15	—	—	295	EPR	8	9	S314GF02C3BV9
1/4	3/64	3/64	.05	.05	150	150	150	150	150	150	180	Nitrile	8	9	S314GF02N3BC3
	3/32	1/16	.20	.10	80	80	80	80	80	80	180	Nitrile	8	9	S314GF02N3BW7
	3/32	3/32	.20	.20	45	45	45	45	45	45	180	Nitrile	8	9	S314GF02N3BC9
	5/32	3/32	.41	.20	30	15	30	15	30	15	180	Nitrile	8	9	S314GF02N3BV9
1/4	3/64	3/64	.05	.05	150	150	150	150	150	150	230	Viton	8	9	S314GF02V3BC3
	3/32	1/16	.20	.10	80	80	80	80	80	80	230	Viton	8	9	S314GF02V3BW7
	3/32	3/32	.20	.20	45	45	45	45	45	45	230	Viton	8	9	S314GF02V3BC9
	5/32	3/32	.41	.20	30	15	30	15	30	15	230	Viton	8	9	S314GF02V3BV9
1/4	3/64	3/64	.05	.05	150	150	150	150	150	150	366*	Teflon	8	9	S314GF02T3BC3
	3/32	1/16	.20	.10	80	80	80	80	80	80	366*	Teflon	8	9	S314GF02T3BW7
	3/32	3/32	.20	.20	45	45	45	45	45	45	366*	Teflon	8	9	S314GF02T3BC9
	5/32	3/32	.41	.10	30	15	30	15	30	15	366*	Teflon	8	9	S314GF02T3BV9

* Class H Coil Recommended for High Temperature Applications

GC Valves Customer Service: 800-828-0484 (7:30am to 4pm ET) or 800-582-4232 (7:30am to 4pm PT)

S314 – 1/4" NPT, Stainless Steel Body, Normally Open



Part Numbering

1	2	3	4	5	6	7	8	9	10	11	12	13
S	3	1	4	G	F	0	2	C	3	B	C	3
Series			Operating Mode	Housing*	Coil Class*	Voltage*		Seal Material	Body Material	Pipe Connection	Orifice Size (Main x Top)	
S31			4: Normally Open	G: Conduit	F: Class F	02: 120/60 110/50		C: EPR N: Nitrile V: Viton T: Teflon	3: Stainless Steel	B: 1/4" NPT	C3: 3/64" x 3/64" W7: 3/32" x 1/16" C9: 3/32" x 3/32" V9: 5/32" x 3/32"	
* See the "Engineering Guide" for additional voltages, variations and options.												

Coil Data

Coil Family	
Type	Size
All	S3

Frequency (Hz)	60	50
Nominal Power (VA)	Inrush	36
	Holding	16

S30 Series



- 1/4" NPT
- Stainless Steel Body
- 3-Way Direct Acting
- Normally Open



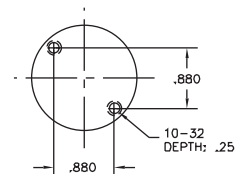
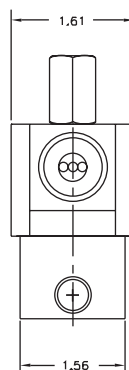
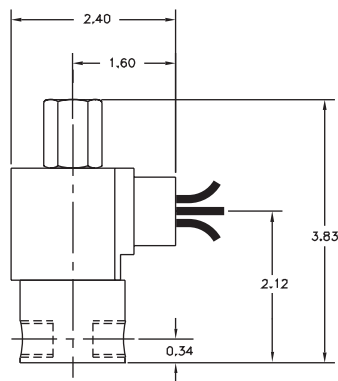
Materials	Seals:	Nitrile, Viton®, Ethylene Propylene or Teflon®
	Orifices: Top Main	Stainless Steel Stainless Steel
Electrical	Standard Housing:	Encapsulated Waterproof Conduit (NEMA 4/4X)
	Optional Housings:	Metallic Conduit, Explosion-proof (NEMA 7), Grommet, Open Frame, Junction Box (single or dual knockouts), DIN; Contact GC Valves Customer Service for others.
	Standard Voltages:	24, 120, 240 AC 60 Hz; 50 Hz available 6, 12, 24 DC; Contact GC Valves Customer Service for Additional Voltages.
	Voltage Tolerance:	±10% of applicable voltage
	Coil Classes:	F, H, N
	Standard Lead Length:	24 inch
Operating Temperature	Ambient (Nominal):	32° to 125°F
Mounting	Position	Any
Approvals*	Agency	UL Listed, UL Recognized, CSA Approved

* Not available for all variations

© Registered Trademark of DuPont Co.

Dimensions/Weight

Weight (lbs.)
1.2



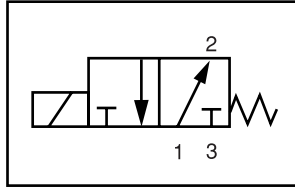
GC Valves Customer Service: 800-828-0484 (7:30am to 4pm ET) or 800-582-4232 (7:30am to 4pm PT)



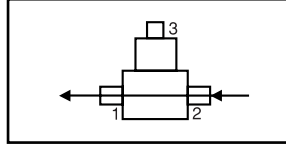
S304 – 1/4" NPT, Stainless Steel Body, Normally Open

Valve Selection List

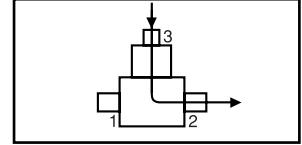
Normally Open



Energized



De-Energized



Pipe Size NPT	Orifice Size IN		C _v		Operating Pressure Differential (psi)						Max Fluid Temp. °F	Seal Material	Power Consumption (Watts)		Model Code (120V/60HZ — 110V/50HZ Shown)
	Main	Top	Main	Top	Maximum								AC	DC	
					Air/Gas		Water		Light Oil						
	AC	DC	AC	DC	AC	DC	AC	DC	AC	DC			Stainless Steel Body		
1/4	3/64	3/64	.05	.05	150	150	150	150	—	—	295	EPR	10	10	S304GF02C3BC3
	3/64	1/16	.05	.10	150	120	150	120	—	—	295	EPR	10	10	S304GF02C3BV1
	1/16	1/16	.08	.10	125	120	125	120	—	—	295	EPR	10	10	S304GF02C3BC5
	3/32	3/32	.18	.23	75	25	75	25	—	—	295	EPR	10	10	S304GF02C3BC9
	5/32	3/32	.41	.23	75	20	75	20	—	—	295	EPR	10	10	S304GF02C3BV7
1/4	3/64	3/64	.05	.05	150	150	150	150	150	150	180	Nitrile	10	10	S304GF02N3BC3
	3/64	1/16	.05	.10	150	120	150	120	150	120	180	Nitrile	10	10	S304GF02N3BV1
	1/16	1/16	.08	.10	125	120	125	120	125	120	180	Nitrile	10	10	S304GF02N3BC5
	3/32	3/32	.18	.23	75	25	75	25	75	25	180	Nitrile	10	10	S304GF02N3BC9
	5/32	3/32	.41	.23	20	75	20	20	75	20	180	Nitrile	10	10	S304GF02N3BV7
1/4	3/64	3/64	.05	.05	150	150	150	150	150	150	230	Viton	10	10	S304GF02V3BC3
	3/64	1/16	.05	.10	150	120	150	120	150	120	230	Viton	10	10	S304GF02V3BV1
	1/16	1/16	.08	.10	125	120	125	120	125	120	230	Viton	10	10	S304GF02V3BC5
	3/32	3/32	.18	.23	75	25	75	25	75	25	230	Viton	10	10	S304GF02V3BC9
	5/32	3/32	.41	.23	75	20	75	20	75	20	230	Viton	10	10	S304GF02V3BV7
1/4	3/64	3/64	.05	.05	150	150	150	150	150	150	366*	Teflon	10	10	S304GF02T3BC3
	3/64	1/16	.05	.10	150	120	150	120	150	120	366*	Teflon	10	10	S304GF02T3BV1
	1/16	1/16	.08	.10	125	120	125	120	125	120	366*	Teflon	10	10	S304GF02T3BC5
	3/32	3/32	.18	.23	75	25	75	25	75	25	366*	Teflon	10	10	S304GF02T3BC9
	5/32	3/32	.41	.23	75	20	75	20	75	20	366*	Teflon	10	10	S304GF02T3BV7

* Class H Coil Recommended for High Temperature Applications

GC Valves Customer Service: 800-828-0484 (7:30am to 4pm ET) or 800-582-4232 (7:30am to 4pm PT)

S304 – 1/4" NPT, Stainless Steel Body, Normally Open



Part Numbering

1	2	3	4	5	6	7	8	9	10	11	12	13
S	3	0	4	G	F	0	2	C	3	B	C	3
Series			Operating Mode	Housing*	Coil Class*	Voltage*		Seal Material	Body Material	Pipe Connection	Orifice Size (Main x Top)	
S30			4: Normally Open	G: Conduit	F: Class F	02: 120/60 110/50		C: EPR N: Nitrile V: Viton T: Teflon	3: Stainless Steel	B: 1/4" NPT	C3: 3/64" x 3/64" V1: 3/64" x 1/16" C5: 1/16" x 1/16" C9: 3/32" x 3/32" V7: 5/32" x 3/32"	
* See the "Engineering Guide" for additional voltages, variations and options.												

Coil Data

Coil Family	
Type	Size
All	S4

Frequency (Hz)	60	50
Nominal Power (VA)	Inrush	46
	Holding	20

- 1/4" NPT
- Stainless Steel Body
- 3-Way Direct Acting
- Normally Open



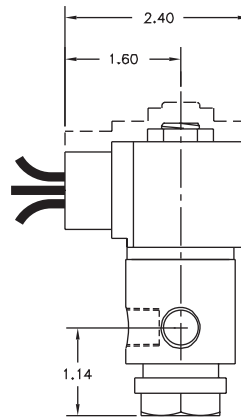
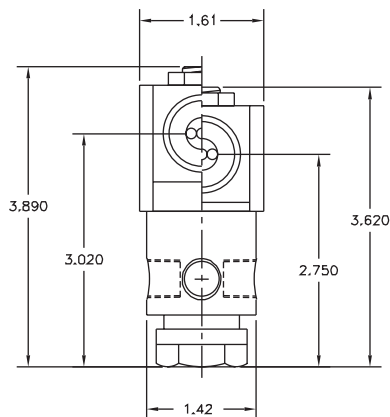
Materials	Seals:	Nitrile, Viton®, Ethylene Propylene
	Orifices:	Stainless Steel
Electrical	Standard Housing:	Encapsulated Waterproof Conduit (NEMA 4/4X)
	Optional Housings:	Metallic Conduit, Explosion-proof (NEMA 7), Grommet, Open Frame, Junction Box (single or dual knockouts), DIN; Contact GC Valves Customer Service for others.
	Standard Voltages:	24, 120, 240 AC 60 Hz; 50 Hz available 6, 12, 24 DC; Contact GC Valves Customer Service for Additional Voltages.
	Voltage Tolerance:	±10% of applicable voltage
	Coil Classes:	F, H, N
	Standard Lead Length:	24 inch
Operating Temperature	Ambient (Nominal):	32°F to 125°F
Mounting	Position	Any
Approvals*	Agency	UL Listed, UL Recognized, CSA Approved

* Not available for all variations

© Registered Trademark of DuPont Co.

Dimensions/Weight

Weight (lbs.)
1.1



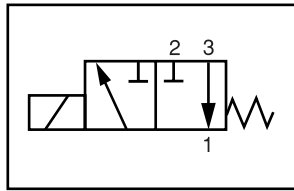
GC Valves Customer Service: 800-828-0484 (7:30am to 4pm ET) or 800-582-4232 (7:30am to 4pm PT)



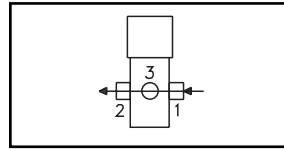
S334 – 1/4" NPT, Stainless Steel Body, Normally Open

Valve Selection List

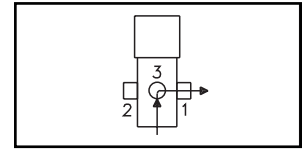
Normally Open



Energized



De-Energized



Pipe Size NPT	Orifice Size IN	C _v	Minimum	Operating Pressure Differential (psi)						Max Fluid Temp. °F	Seal Material	Power Consumption (Watts)		Model Code (120V/60HZ — 110V/50HZ) Shown	
				Maximum								AC	DC		
				Air/Gas		Water		Light Oil							
				AC	DC	AC	DC	AC	DC			AC	DC	Stainless Steel Body	
Reduced Power	1/4	1/16	.09	0	160	100	160	100	—	—	295	EPR	8	9	S334GF02C7BC5
		3/32	.15	0	100	50	100	50	—	—	295	EPR	8	9	S334GF02C7BC9
		1/8	.26	0	50	30	50	30	—	—	295	EPR	8	9	S334GF02C7BD5
1/4	1/16	.09	0	200	160	200	160	—	—	295	EPR	10	10	S334GF02C8BC5	
		3/32	.15	0	150	114	150	114	—	—	295	EPR	10	10	S334GF02C8BC9
		1/8	.31	0	84	60	84	60	—	—	295	EPR	10	10	S334GF02C8BD5
		11/64	.38	0	45	24	45	24	—	—	295	EPR	10	10	S334GF02C8BD8
Reduced Power	1/4	1/16	.09	0	160	100	160	100	160	100	180	Nitrile	8	9	S334GF02N7BC5
		3/32	.15	0	100	50	100	50	100	50	180	Nitrile	8	9	S334GF02N7BC9
		1/8	.26	0	50	30	50	30	50	30	180	Nitrile	8	9	S334GF02N7BD5
1/4	1/16	.09	0	200	160	200	160	200	160	180	Nitrile	10	10	S334GF02N8BC5	
		3/32	.15	0	150	114	150	114	150	114	180	Nitrile	10	10	S334GF02N8BC9
		1/8	.31	0	84	60	84	60	84	60	180	Nitrile	10	10	S334GF02N8BD5
		11/64	.38	0	45	24	45	24	45	24	180	Nitrile	10	10	S334GF02N8BD8
Reduced Power	1/4	1/16	.09	0	160	100	160	100	160	100	230	Viton	8	9	S334GF02V7BC5
		3/32	.15	0	100	50	100	50	100	50	230	Viton	8	9	S334GF02V7BC9
		1/8	.26	0	50	30	50	30	50	30	230	Viton	8	9	S334GF02V7BD5
1/4	1/16	.09	0	200	160	200	160	200	160	230	Viton	10	10	S334GF02V8BC5	
		3/32	.15	0	150	114	150	114	150	114	230	Viton	10	10	S334GF02V8BC9
		1/8	.31	0	84	60	84	60	84	60	230	Viton	10	10	S334GF02V8BD5
		11/64	.38	0	45	24	45	24	45	24	230	Viton	10	10	S334GF02V8BD8

* Class H Coil Recommended for High Temperature Applications

S334 – 1/4" NPT, Stainless Steel Body, Normally Open



Part Numbering

1	2	3	4	5	6	7	8	9	10	11	12	13
S	3	3	4	G	F	0	2	C	7	B	C	5
Series			Operating Mode	Housing*	Coil Class*	Voltage*		Seal Material	Body Material	Pipe Connection	Orifice Size	
S33			4: Normally Open	G: Conduit	F: Class F	02: 120/60 110/50		C: EPR N: Nitrile V: Viton	7: Stainless Steel 8: Stainless Steel	B: 1/4" NPT	C5: 1/16" C9: 3/32" D5: 1/8" D8: 11/64"	
* See the "Engineering Guide" for additional voltages, variations and options.												

Coil Data

Coil Family	
Type	Size
(Body Code)	
7	S3
8	S4

Frequency (Hz)	60		50	
	7	8	7	8
Body	7	8	7	8
Nominal Power (VA)	Inrush		36	46
	Holding		13	18