

## Safety Relays

Category 4 Application

Emergency Stop & Gate Monitoring - Extension Modules

**SAFE 2.2**  
Without Start Control Monitoring  
(Automatic Reset)



Mat and Edge Control Monitoring Applications

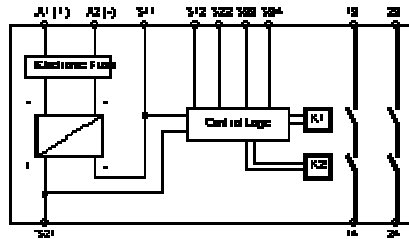
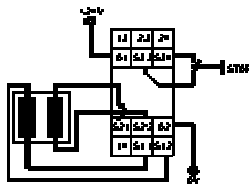
**SAFE Z.2**  
Insures Simultaneous Closure of Two Buttons or  
Switches



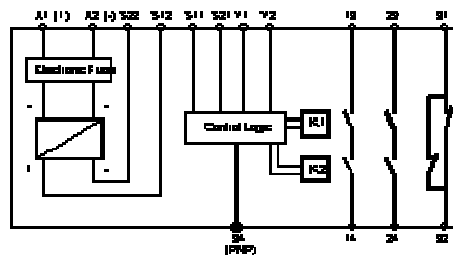
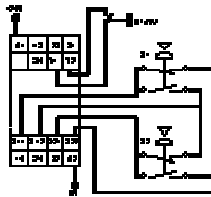
Two Hand Anti Tie Down  
Control Application

### Connection Diagram

**SAFE 2.2**



**SAFE Z.2**



Part Numbers	SAFE 2.2	SAFE Z.2
<b>Operation Voltage</b>	24V AC/DC	24V AC/DC, 120V AC, 230 V AC
<b>Output Contacts</b>	2 NO Safety	2 NO Safety, 1 NC Aux., 1 PNP
<b>Max. Contact Capacity</b>	6A (AC or DC)	6A (AC or DC)
<b>Min. Contact Capacity</b>	1 mA	1 mA
<b>Switching Capacity</b>	1500 VA (Resistive Load)	1500 VA (Resistive Load)
<b>Power Consumption</b>	2.5 VA / 2.5 W	3 VA
<b>Start Up Delay / Fallback</b>	<50ms / <30ms	<50ms / <25ms
<b>Simultaneity</b>	40ms	.5 s
<b>Security</b>	6.3A quick acting or 4A time lag	6.3A quick acting or 4A time lag
<b>Temperature Range</b>	-25°C to +55°C	-25°C to +55°C
<b>Approvals</b>	CE, BG, UL, cUL	CE, BG, UL, cUL