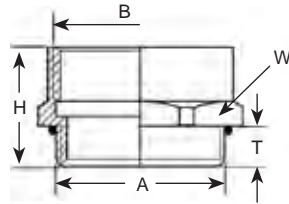
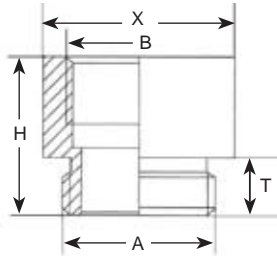




*Dealing with foreign products?
Is connecting a challenge?
Well, look no further!*



(AG-xxxx-BR & AM-xxxx-BR)



(AF-xxxx-BR, AP-xxxx-BR & AG-xxxx-AL)

More custom parts available online at www.sealconusa.com or upon request!

Adapters - PG to NPT Threads

Part Numbers		Threads		Dimensions in Inches (mm)		
Nickel Plated Brass w/ Buna-N O-Ring	Aluminum	Male Thread A	Female Thread B	W	T	H
				Wrench Flat	Thread Length	Height
AG-0912-BR	AG-0912-AL	PG 9	1/2" NPT	.94 (24)	.24 (6)	.94 (24)
AG-1112-BR	-	PG 11	1/2" NPT	.94 (24)	.24 (6)	.89 (22.7)
AG-1312-BR	-	PG 13	1/2" NPT	.94 (24)	.26 (6.5)	.93 (23.5)
AG-1612-BR	-	PG 16	1/2" NPT	.94 (24)	.26 (6.5)	.91 (23)
AG-2112-BR	-	PG 21	1/2" NPT	1.18 (30)	.28 (7)	.59 (15)
AG-2134-BR	-	PG 21	3/4" NPT	1.18 (30)	.28 (7)	.94 (24)
AG-2910-BR	-	PG 29	1" NPT	1.57 (40)	.31 (8)	.79 (20)

Adapters - PG to Metric Threads

Part Numbers		Threads		Dimensions in Inches (mm)		
	Male Thread A	Female Thread B	X	T	H	
			Outer Diameter	Thread Length	Height	
AP-0916-BR	PG 9	M16 x 1.5	.79 (20)	.24 (6)	.65 (16.5)	
AP-1120-BR	PG 11	M20 x 1.5	.87 (22)	.26 (6.5)	.75 (19)	
AP-1320-BR	PG 13	M20 x 1.5	.87 (22)	.26 (6.5)	.75 (19)	
AP-1625-BR	PG 16	M25 x 1.5	1.06 (27)	.26 (6.5)	.83 (21)	

Adapters - NPT to PG Threads

	Threads		Dimensions in Inches (mm)		
	Male Thread A	Female Thread B	W	T	H
			Wrench Flat	Thread Length	Height
AN-1407-BR	1/4" NPT	PG 7	.75 (19)	.59 (15)	.98 (25)
AN-1209-BR	1/2" NPT	PG 9	.98 (25)	.79 (20)	1.18 (30)
AN-1211-BR	1/2" NPT	PG 11	.98 (25)	.79 (20)	1.18 (30)
AN-1213-BR	1/2" NPT	PG 13	.98 (25)	.79 (20)	1.18 (30)
AN-1221-BR	1/2" NPT	PG 21	1.30 (33)	.79 (20)	1.26 (32)
AN-3421-BR	3/4" NPT	PG 21	1.30 (33)	.67 (17)	1.22 (31)
AN-1029-BR	1" NPT	PG 29	1.61 (41)	.98 (25)	1.38 (35)
AN-5429-BR	1-1/4" NPT	PG 29	1.69 (43)	.94 (24)	1.34 (34)

Adapters - Metric to PG Threads

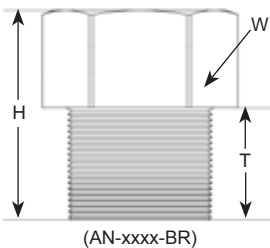
Part Numbers		Threads		Dimensions in Inches (mm)		
	Male Thread A	Female Thread B	X	T	H	
			Outer Diameter	Thread Length	Height	
AF-1609-BR	M16 x 1.5	PG 9	.79 (20)	.24 (6)	.65 (16.5)	
AF-2011-BR	M20 x 1.5	PG 11	.87 (22)	.26 (6.5)	.75 (19)	
AF-2013-BR	M20 x 1.5	PG 13	.87 (22)	.26 (6.5)	.75 (19)	
AF-2016-BR	M20 x 1.5	PG 16	.84 (24)	.26 (6.5)	.75 (19)	
AF-2516-BR	M25 x 1.5	PG 16	1.10 (28)	.26 (6.5)	.75 (19)	
AF-2521-BR	M25 x 1.5	PG 21	1.18 (30)	.26 (6.5)	.83 (21)	
AF-3229-BR	M32 x 1.5	PG 29	1.54 (39)	.28 (7)	.91 (23)	

Adapters - NPT to Metric Threads

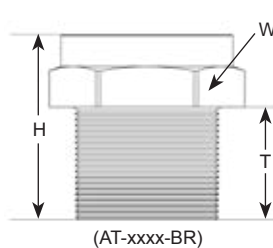
Part Numbers		Threads		Dimensions in Inches (mm)		
	Male Thread A	Female Thread B	W	T	H	
			Wrench Flat	Thread Length	Height	
AT-1216-BR	1/2" NPT	M16 x 1.5	.98 (25)	.79 (20)	1.18 (30)	
AT-1220-BR	1/2" NPT	M20 x 1.5	.98 (25)	.79 (20)	1.18 (30)	
AT-1225-BR	1/2" NPT	M25 x 1.5	1.26 (32)	.79 (20)	1.18 (30)	
AT-3425-BR	3/4" NPT	M25 x 1.5	1.24 (31.6)	.75 (19)	1.18 (30)	
AT-1032-BR	1" NPT	M32 x 1.5	1.50 (38)	.98 (25)	1.61 (41)	
AT-5432-BR	1-1/4" NPT	M32 x 1.5	1.67 (42.5)	.59 (15)	1.30 (33)	

Adapters - Metric to NPT Threads

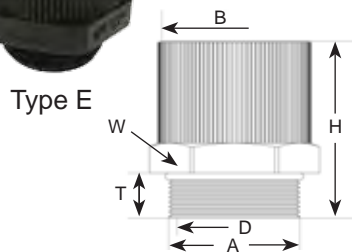
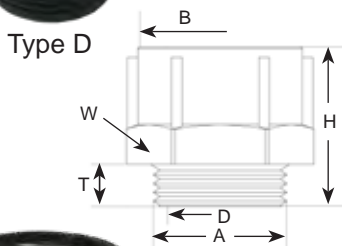
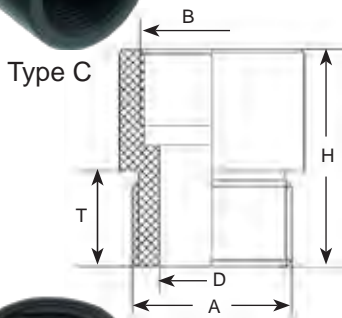
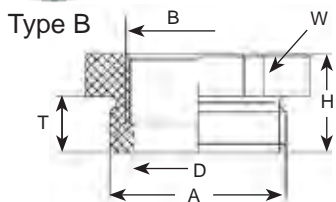
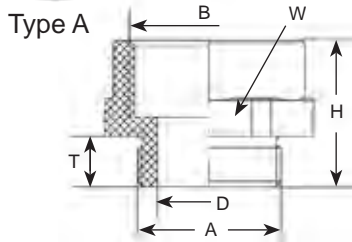
Part Numbers		Threads		Dimensions in Inches (mm)		
Nickel Plated Brass w/ Buna-N O-Ring	Male Thread A	Female Thread B	W	T	H	
			Wrench Flat	Thread Length	Height	
AM-1612-BR	M16 x 1.5	1/2" NPT	.94 (24)	.24 (6)	.91 (23)	
AM-2012-BR	M20 x 1.5	1/2" NPT	.94 (24)	.24 (6)	.91 (23)	
AM-2512-BR	M25 x 1.5	1/2" NPT	1.18 (30)	.28 (7)	.59 (15)	
AM-2534-BR	M25 x 1.5	3/4" NPT	1.18 (30)	.28 (7)	1.07 (26)	
AM-3210-BR	M32 x 1.5	1" NPT	1.57 (40)	.31 (8)	1.30 (33)	
AM-3254-BR	M32 x 1.5	1-1/4" NPT	1.81 (46)	.31 (8)	1.30 (33)	



(AN-xxxx-BR)



(AT-xxxx-BR)



Adapters - Metric to PG Threads

Part Numbers	Threads		Adapter Type	Dimensions in Inches (mm)			
	Male Thread A	Female Thread B		T	H	D	W
				Thread Length	Height	Inner Diameter	Wrench Flat
AF-1207-BK	M12 x 1.5	PG 7	A	.31 (8)	.79 (20)	.26 (6.5)	.67 (17)
AF-1609-BK	M16 x 1.5	PG 9	C	.59 (15)	1.34 (34)	.33 (8.5)	N/A
AF-2013-BK	M20 x 1.5	PG 13	A	.31 (8)	.83 (21)	.55 (14)	.98 (25)
AF-2513-BK	M25 x 1.5	PG13	B	.31 (8)	.55 (14)	.71 (18)	1.14 (29)
AF-2516-BK	M25 x 1.5	PG 16	A	.31 (8)	.87 (22)	.71 (18)	1.14 (29)
AF-3221-BK	M32 x 1.5	PG 21	A	.39 (10)	.98 (25)	.98 (25)	1.43 (36)
AF-4029-BK	M40 x 1.5	PG 29	A	.39 (10)	.98 (25)	1.30 (33)	1.77 (45)
AF-5036-BK	M50 x 1.5	PG 36	A	.47 (12)	1.14 (29)	1.69 (43)	2.17 (55)
AF-6342-BK	M63 x 1.5	PG 42	C	.59 (15)	.79 (20)	2.05 (52)	N/A
AF-6348-BK	M63 x 1.5	PG 48	C	.59 (15)	1.38 (35)	2.01 (51)	N/A

Adapters - PG to Metric Threads

Part Numbers	Threads		Adapter Type	Dimensions in Inches (mm)			
	Male Thread A	Female Thread B		T	H	D	W
				Thread Length	Height	Inner Diameter	Wrench Flat
AP-0712-BK	PG 7	M12 x 1.5	C	.59 (15)	1.34 (34)	.24 (6)	N/A
AP-0912-BK	PG 9	M12 x 1.5	C	.59 (15)	1.34 (34)	.33 (8.5)	N/A
AP-0916-BK	PG 9	M16 x 1.5	A	.31 (8)	.79 (20)	.35 (9)	.83 (21)
AP-1116-BK	PG 11	M16 x 1.5	C	.59 (15)	1.34 (34)	.45 (11.5)	N/A
AP-1120-BK	PG 11	M20 x 1.5	C	.59 (15)	1.34 (34)	.45 (11.5)	N/A
AP-1316-BK	PG 13	M16 x 1.5	B	.31 (8)	.55 (14)	.55 (14)	.98 (25)
AP-1320-BK	PG 13	M20 x 1.5	A	.31 (8)	.83 (21)	.55 (14)	.98 (25)
AP-1620-BK	PG 16	M20 x 1.5	A	.31 (8)	.83 (21)	.63 (16)	1.06 (27)
AP-1625-BK	PG 16	M25 x 1.5	A	.31 (8)	.91 (23)	.63 (16)	1.18 (30)
AP-2125-BK	PG 21	M25 x 1.5	C	.59 (15)	1.34 (34)	.81 (20.5)	N/A
AP-2132-BK	PG 21	M32 x 1.5	A	.31 (8)	.91 (23)	.83 (21)	1.46 (37)
AP-2932-BK	PG 29	M32 x 1.5	C	.59 (15)	1.34 (34)	1.10 (28)	N/A
AP-2940-BK	PG 29	M40 x 1.5	A	.39 (10)	1.06 (27)	1.18 (30)	1.77 (45)
AP-3640-BK	PG 36	M40 x 1.5	C	.59 (15)	.79 (20)	1.50 (38)	N/A
AP-3650-BK	PG 36	M50 x 1.5	C	.59 (15)	1.36 (34.5)	1.46 (37)	N/A
AP-4240-BK	PG 42	M40 x 1.5	C	.59 (15)	.79 (20)	1.50 (38)	N/A
AP-4250-BK	PG 42	M50 x 1.5	C	.59 (15)	1.36 (34.5)	1.69 (43)	N/A
AP-4850-BK	PG 48	M50 x 1.5	C	.59 (15)	.79 (20)	1.50 (38)	N/A
AP-4863-BK	PG 48	M63 x 1.5	C	.59 (15)	1.38 (35)	1.89 (48)	N/A

Adapters - PG to NPT Threads

Part Numbers	Threads		Adapter Type	Dimensions in Inches (mm)			
	Male Thread A	Female Thread B		T	H	D	W
				Thread Length	Height	Inner Diameter	Wrench Flat
AG-1112-BK	PG 13	1/2" NPT	D	.28 (7)	.83 (21)	N/A	.94 (24)
AG-1312-BK	PG 11	1/2" NPT	D	.35 (9)	.91 (23)	N/A	.94 (24)

Adapters - Metric to NPT Threads

Part Numbers	Threads		Adapter Type	Dimensions in Inches (mm)			
	Male Thread A	Female Thread B		T	H	D	W
				Thread Length	Height	Inner Diameter	Wrench Flat
AM-1612-BK	M16 x 1.5	1/2" NPT	E	.28 (7)	1.10 (28)	N/A	1.02 (26)
AM-2012-BK	M20 x 1.5	1/2" NPT	E	.28 (7)	1.06 (27)	N/A	1.02 (26)

See page 49 for thread specifications.

For Material Specifications please refer to page 45.



Adapters, Reducers & Enlargers

Reducers (Hex & Round) - Nickel Plated Brass

RoHS Deca BDE

Is your thread size off by one size?

These Reducers will solve that threading **problem. They convert holes which fit PG, NPT or Metric threads to a smaller female thread of the same thread type.**

Reducers - PG to PG Threads

Part Numbers		Threads		Dimensions in Inches (mm)		
w/ Buna-N O-Ring	without O-Ring	Male Thread A	Female Thread B	W	T	H
		A	B	Wrench Flat	Thread Length	Height
RQ-0907-BR	RP-0907-BR	PG 9	PG 7	.67 (17)	.24 (6)	.34 (8.8)
RQ-1107-BR	RP-1107-BR	PG 11	PG 7	.79 (20)	.24 (6)	.35 (9)
RQ-1109-BR	RP-1109-BR	PG 11	PG 9	.79 (20)	.24 (6)	.35 (9)
RQ-1309-BR	RP-1309-BR	PG 13	PG 9	.87 (22)	.26 (6.5)	.37 (9.5)
RQ-1311-BR	RP-1311-BR	PG 13	PG 11	.87 (22)	.26 (6.5)	.37 (9.5)
RQ-1609-BR	RP-1609-BR	PG 16	PG 9	.94 (24)	.26 (6.5)	.37 (9.5)
RQ-1611-BR	RP-1611-BR	PG 16	PG 11	.94 (24)	.26 (6.5)	.37 (9.5)
RQ-1613-BR	RP-1613-BR	PG 16	PG 13	.94 (24)	.26 (6.5)	.37 (9.5)
RQ-2111-BR	RP-2111-BR	PG 21	PG 11	1.18 (30)	.28 (7)	.41 (10.3)
RQ-2113-BR	RP-2113-BR	PG 21	PG 13	1.18 (30)	.28 (7)	.41 (10.3)
RQ-2116-BR	RP-2116-BR	PG 21	PG 16	1.18 (30)	.28 (7)	.41 (10.3)
RQ-2916-BR	RP-2916-BR	PG 29	PG 16	1.57 (40)	.31 (8)	.45 (11.5)
RQ-2921-BR	RP-2921-BR	PG 29	PG 21	1.57 (40)	.31 (8)	.45 (11.5)
RQ-3621-BR	RP-3621-BR	PG 36	PG 21	1.97 (50)	.35 (9)	.49 (12.5)
RQ-3629-BR	RP-3629-BR	PG 36	PG 29	1.97 (50)	.35 (9)	.49 (12.5)
RQ-4229-BR	RP-4229-BR	PG 42	PG 29	2.24 (57)	.39 (10)	.53 (13.5)
RQ-4236-BR	RP-4236-BR	PG 42	PG 36	2.24 (57)	.39 (10)	.53 (13.5)
RQ-4836-BR	RP-4836-BR	PG 48	PG 36	2.52 (64)	.39 (10)	.53 (13.5)
RQ-4842-BR	RP-4842-BR	PG 48	PG 42	2.52 (64)	.39 (10)	.53 (13.5)

Reducers - Metric to Metric Threads

Part Numbers		Threads		Dimensions in Inches (mm)		
	Male Thread A	Female Thread B	D	T	H	
			Outer Diameter	Thread Length	Height	
RR-1612-BR	M16 x 1.5	M12 x 1.5	.71 (18)	.24 (6)	.33 (8.5)	
RR-2012-BR	M20 x 1.5	M12 x 1.5	.94 (24)	.26 (6.5)	.35 (9)	
RR-2016-BR	M20 x 1.5	M16 x 1.5	.94 (24)	.26 (6.5)	.35 (9)	
RR-2516-BR	M25 x 1.5	M16 x 1.5	1.18 (30)	.28 (7)	.39 (10)	
RR-2520-BR	M25 x 1.5	M20 x 1.5	1.18 (30)	.28 (7)	.39 (10)	
RR-3220-BR	M32 x 1.5	M20 x 1.5	1.54 (39)	.31 (8)	.45 (11.5)	
RR-3225-BR	M32 x 1.5	M25 x 1.5	1.54 (39)	.31 (8)	.45 (11.5)	
RR-4025-BR	M40 x 1.5	M25 x 1.5	1.69 (43)	.31 (8)	.45 (11.5)	
RR-4032-BR	M40 x 1.5	M32 x 1.5	1.69 (43)	.35 (9)	.49 (12.5)	
RR-5032-BR	M50 x 1.5	M32 x 1.5	2.24 (57)	.39 (10)	.55 (14)	
RR-5040-BR	M50 x 1.5	M40 x 1.5	2.24 (57)	.39 (10)	.55 (14)	
RR-6340-BR	M63 x 1.5	M40 x 1.5	2.52 (64)	.39 (10)	.55 (14)	
RR-6350-BR	M63 x 1.5	M50 x 1.5	2.52 (64)	.39 (10)	.55 (14)	

Reducers - PG to PG Threads

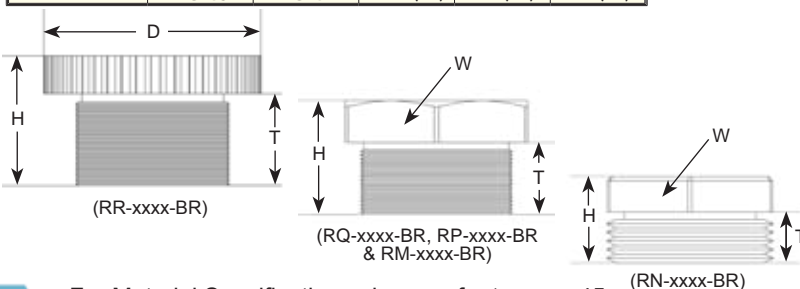
Part Numbers		Threads		Dimensions in Inches (mm)		
	Male Thread A	Female Thread B	D	T	H	
			Outer Diameter	Thread Length	Height	
RR-0907-BR	PG 9	PG 7	.67 (17)	.24 (6)	.33 (8.5)	
RR-1107-BR	PG 11	PG 7	.79 (20)	.24 (6)	.33 (8.5)	
RR-1109-BR	PG 11	PG 9	.79 (20)	.24 (6)	.33 (8.5)	
RR-1309-BR	PG 13	PG 9	.87 (22)	.26 (6.5)	.35 (9)	
RR-1311-BR	PG 13	PG 11	.87 (22)	.26 (6.5)	.35 (9)	
RR-1609-BR	PG 16	PG 9	.94 (24)	.26 (6.5)	.37 (9.5)	
RR-1611-BR	PG 16	PG 11	.94 (24)	.26 (6.5)	.37 (9.5)	
RR-1613-BR	PG 16	PG 13	.94 (24)	.26 (6.5)	.37 (9.5)	
RR-2111-BR	PG 21	PG 11	1.18 (30)	.28 (7)	.39 (10)	
RR-2113-BR	PG 21	PG 13	1.18 (30)	.28 (7)	.39 (10)	
RR-2116-BR	PG 21	PG 16	1.18 (30)	.28 (7)	.39 (10)	
RR-2916-BR	PG 29	PG 16	1.54 (39)	.31 (8)	.45 (11.5)	
RR-2921-BR	PG 29	PG 21	1.54 (39)	.31 (8)	.45 (11.5)	
RR-3621-BR	PG 36	PG 21	1.97 (50)	.35 (9)	.49 (12.5)	
RR-3629-BR	PG 36	PG 29	1.97 (50)	.35 (9)	.49 (12.5)	
RR-4229-BR	PG 42	PG 29	2.24 (57)	.39 (10)	.55 (14)	
RR-4236-BR	PG 42	PG 36	2.24 (57)	.39 (10)	.55 (14)	
RR-4836-BR	PG 48	PG 36	2.52 (64)	.39 (10)	.55 (14)	
RR-4842-BR	PG 48	PG 42	2.52 (64)	.39 (10)	.55 (14)	

Reducers - Metric to Metric Threads

Part Numbers		Threads		Dimensions in Inches (mm)		
	Male Thread A	Female Thread B	W	T	H	
			Wrench Flat	Thread Length	Height	
RM-1612-BR	M16 x 1.5	M12 x 1.5	.67 (17)	.20 (5)	.31 (8)	
RM-2012-BR	M20 x 1.5	M12 x 1.5	.87 (22)	.24 (6)	.35 (9)	
RM-2016-BR	M20 x 1.5	M16 x 1.5	.87 (22)	.24 (6)	.35 (9)	
RM-2516-BR	M25 x 1.5	M16 x 1.5	1.06 (27)	.28 (7)	.39 (10)	
RM-2520-BR	M25 x 1.5	M20 x 1.5	1.06 (27)	.28 (7)	.39 (10)	
RM-3216-BR	M32 x 1.5	M16 x 1.5	1.34 (34)	.31 (8)	.34 (11)	
RM-3220-BR	M32 x 1.5	M20 x 1.5	1.34 (34)	.31 (8)	.43 (11)	
RM-3225-BR	M32 x 1.5	M25 x 1.5	1.34 (34)	.31 (8)	.43 (11)	
RM-4020-BR	M40 x 1.5	M20 x 1.5	1.46 (43)	.31 (8)	.47 (12)	
RM-4025-BR	M40 x 1.5	M25 x 1.5	1.46 (43)	.31 (8)	.47 (12)	
RM-4032-BR	M40 x 1.5	M32 x 1.5	1.46 (43)	.31 (8)	.47 (12)	
RM-5025-BR	M50 x 1.5	M25 x 1.5	2.17 (55)	.35 (9)	.51 (13)	
RM-5032-BR	M50 x 1.5	M32 x 1.5	2.17 (55)	.35 (9)	.51 (13)	
RM-5040-BR	M50 x 1.5	M40 x 1.5	2.17 (55)	.35 (9)	.51 (13)	
RM-6332-BR	M63 x 1.5	M32 x 1.5	2.56 (65)	.39 (10)	.55 (14)	
RM-6340-BR	M63 x 1.5	M40 x 1.5	2.56 (65)	.39 (10)	.55 (14)	
RM-6350-BR	M63 x 1.5	M50 x 1.5	2.56 (65)	.39 (10)	.55 (14)	

Reducers - NPT to NPT Threads

Part Numbers		Threads		Dimensions in Inches (mm)		
	Male Thread A	Female Thread B	W	T	H	
			Wrench Flat	Thread Length	Height	
RN-3412-BR	3/4" NPT	1/2" NPT	1.18 (30)	.71 (18)	.87 (22)	
RN-1034-BR	1" NPT	3/4" NPT	1.30 (33)	.98 (25)	1.14 (29)	
RN-5410-BR	1-1/4" NPT	1" NPT	1.69 (43)	.98 (25)	1.14 (29)	



For Material Specifications please refer to page 45.

See page 49 for thread specifications.



Adapters, Reducers & Enlargers

Reducers - Black & Gray Nylon

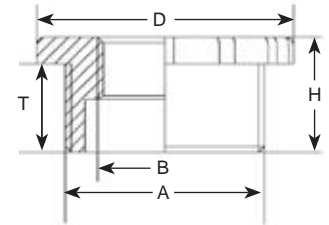
RoHS Deca BDE

Reducers - PG to PG Threads

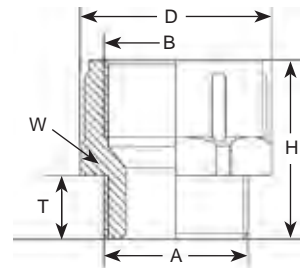
Part Numbers	Threads		Adapter Type	Dimensions in Inches (mm)			
	Male Thread A	Female Thread B		T	H	D	W
				Thread Length	Height	Outer Diameter	Wrench Flat
RR-0907-GY	PG 9	PG 7	B	.31 (8)	.55 (14)	.75 (19)	N/A
RR-1109-GY	PG 11	PG 9	B	.31 (8)	.71 (18)	.89 (22.5)	N/A
RR-1309-GY	PG 13	PG 9	A	.31 (8)	.47 (12)	1.06 (27)	N/A
RR-1311-GY	PG 13	PG 11	B	.35 (9)	.83 (21)	1.0 (25.5)	N/A
RR-1609-GY	PG 16	PG 9	A	.39 (10)	.51 (13)	1.14 (29)	N/A
RR-1611-GY	PG 16	PG 11	A	.39 (10)	.51 (13)	1.14 (29)	N/A
RR-1613-GY	PG 16	PG 13	B	.39 (10)	.98 (25)	1.13 (28.5)	N/A
RR-2113-GY	PG 21	PG 13	A	.43 (11)	.53 (13.5)	1.42 (36)	N/A
RR-2116-GY	PG 21	PG 16	A	.43 (11)	.53 (13.5)	1.42 (36)	N/A
RR-2921-GY	PG 29	PG 21	A	.43 (11)	.53 (13.5)	1.81 (46)	N/A
RR-3629-GY	PG 36	PG 29	A	.43 (11)	.59 (15)	2.28 (58)	N/A



Type A



Type B

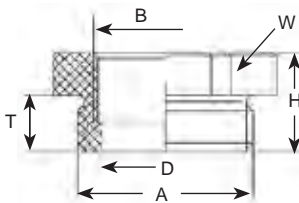


Reducers - Metric to Metric Threads

Part Numbers	Threads		Adapter Type	Dimensions in Inches (mm)			
	Male Thread A	Female Thread B		T	H	D	W
				Thread Length	Height	Outer Diameter	Wrench Flat
RR-1612-GY	M16 x 1.5	M12 x 1.5	B	.35 (9)	1.06 (27)	.87 (22)	.79 (20)
RR-2016-GY	M20 x 1.5	M16 x 1.5	B	.35 (9)	1.06 (27)	1.06 (27)	.94 (24)
RR-2520-GY	M25 x 1.5	M20 x 1.5	A	.39 (10)	.67 (17)	1.26 (32)	1.14 (29)
RR-3225-GY	M32 x 1.5	M25 x 1.5	A	.47 (12)	.75 (19)	1.57 (40)	1.42 (36)
RR-4032-GY	M40 x 1.5	M32 x 1.5	A	.47 (12)	.75 (19)	2.01 (51)	1.81 (46)
RR-5040-GY	M50 x 1.5	M40 x 1.5	A	.55 (14)	.83 (21)	2.40 (61)	2.17 (55)
RR-6350-GY	M63 x 1.5	M50 x 1.5	A	.59 (15)	.87 (22)	2.95 (75)	2.68 (68)



Type C

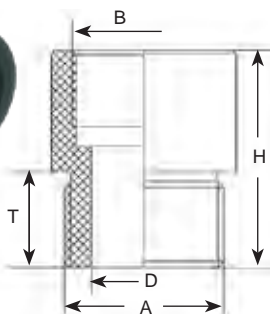


Reducers - Metric to Metric Threads

Part Numbers	Threads		Adapter Type	Dimensions in Inches (mm)			
	Male Thread A	Female Thread B		T	H	D	W
				Thread Length	Height	Inner Diameter	Wrench Flat
RM-1612-BK	M16 x 1.5	M12 x 1.5	C	.31 (8)	.55 (14)	.39 (10)	.79 (20)
RM-2016-BK	M20 x 1.5	M16 x 1.5	C	.31 (8)	.55 (14)	.53 (13.5)	.98 (25)
RM-2520-BK	M25 x 1.5	M20 x 1.5	C	.31 (8)	.55 (14)	.71 (18)	1.14 (29)
RM-3225-BK	M32 x 1.5	M25 x 1.5	C	.39 (10)	.63 (16)	.91 (23)	1.42 (36)
RM-4032-BK	M40 x 1.5	M32 x 1.5	D	.59 (15)	.79 (20)	1.18 (30)	N/A
RM-5040-BK	M50 x 1.5	M40 x 1.5	D	.59 (15)	.79 (20)	1.50 (38)	N/A
RM-6350-BK	M63 x 1.5	M50 x 1.5	D	.59 (15)	.79 (20)	1.89 (48)	N/A



Type D





Reducers - NPT to NPT Threads

Part Numbers	Threads		Adapter Type	Dimensions in Inches (mm)		
	Male Thread A	Female Thread B		T	H	D
				Thread Length	Height	Inner Diameter
RB-3412-02	3/4" NPT	1/2" NPT	C	.637 (16.2)	.887 (22.5)	.696 (17.7)
RB-3438-02	3/4" NPT	3/8" NPT	C	.625 (15.9)	.875 (22.2)	.696 (17.7)
RB-1012-02	1" NPT	1/2" NPT	C	.65 (16.5)	.90 (22.9)	.91 (23.1)
RB-1034-02	1" NPT	3/4" NPT	C	.65 (16.5)	.90 (22.9)	.92 (23.4)
RB-1214-02	1/2" NPT	1/4" NPT	C	.566 (14.4)	.816 (20.7)	.56 (14.2)
RB-1238-02	1/2" NPT	3/8" NPT	C	.574 (14.6)	.824 (20.9)	.561 (14.2)

See page 49 for thread specifications.

For Material Specifications please refer to page 45.

Reducers - Metric to Metric Threads

Part Numbers		Threads		Dimensions in Inches (mm)		
without O-Ring	with Buna-N O-Ring	Male Thread A	Female Thread B	W	T	H
				Wrench Flat	Thread Length	Height
RM-1612-SS	RM-1612-SS-B	M16 x 1.5	M12 x 1.5	.67 (17)	.20 (5)	.35 (9)
RM-2012-SS	RM-2012-SS-B	M20 x 1.5	M12 x 1.5	.87 (22)	.24 (6)	.37 (9.5)
RM-2016-SS	RM-2016-SS-B	M20 x 1.5	M16 x 1.5	.87 (22)	.24 (6)	.37 (9.5)
RM-2516-SS	RM-2516-SS-B	M25 x 1.5	M16 x 1.5	1.06 (27)	.28 (7)	.41 (10.5)
RM-2520-SS	RM-2520-SS-B	M25 x 1.5	M20 x 1.5	1.06 (27)	.28 (7)	.41 (10.5)
RM-3216-SS	RM-3216-SS-B	M32 x 1.5	M16 x 1.5	1.34 (34)	.31 (8)	.49 (12.5)
RM-3220-SS	RM-3220-SS-B	M32 x 1.5	M20 x 1.5	1.34 (34)	.31 (8)	.49 (12.5)
RM-3225-SS	RM-3225-SS-B	M32 x 1.5	M25 x 1.5	1.34 (34)	.31 (8)	.49 (12.5)
RM-4020-SS	RM-4020-SS-B	M40 x 1.5	M20 x 1.5	1.46 (43)	.31 (8)	.51 (13)
RM-4025-SS	RM-4025-SS-B	M40 x 1.5	M25 x 1.5	1.46 (43)	.31 (8)	.51 (13)
RM-4032-SS	RM-4032-SS-B	M40 x 1.5	M32 x 1.5	1.46 (43)	.31 (8)	.51 (13)
RM-5025-SS	RM-5025-SS-B	M50 x 1.5	M25 x 1.5	2.17 (55)	.35 (9)	.59 (15)
RM-5032-SS	RM-5032-SS-B	M50 x 1.5	M32 x 1.5	2.17 (55)	.35 (9)	.59 (15)
RM-5040-SS	RM-5040-SS-B	M50 x 1.5	M40 x 1.5	2.17 (55)	.35 (9)	.59 (15)
RM-6332-SS	RM-6332-SS-B	M63 x 1.5	M32 x 1.5	2.56 (65)	.39 (10)	.65 (16.5)
RM-6340-SS	RM-6340-SS-B	M63 x 1.5	M40 x 1.5	2.56 (65)	.39 (10)	.65 (16.5)
RM-6350-SS	RM-6350-SS-B	M63 x 1.5	M50 x 1.5	2.56 (65)	.39 (10)	.65 (16.5)



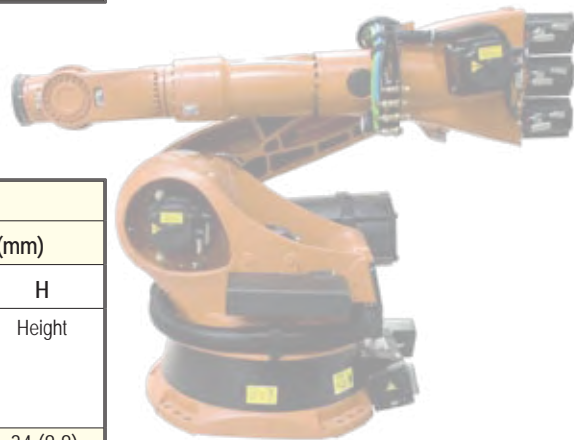
The 316 material is much harder and ideal for direct exposure to salt water and chemical solutions in marine, off-shore, pharmaceutical, etc.

This special Stainless Steel Reducers are produced upon request only.



Please allow for longer delivery times.

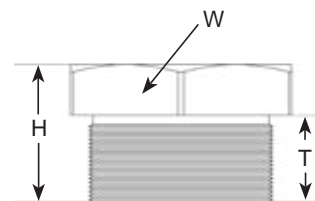
Adapter, Reducer & Enlarger Applications:

- International machine builder & equipment
- Import / Export oriented projects
- Adapting to domestic markets



Reducers - PG to PG Threads

Part Numbers		Threads		Dimensions in Inches (mm)		
without O-Ring	with Buna-N O-Ring	Male Thread A	Female Thread B	W	T	H
				Wrench Flat	Thread Length	Height
RP-0907-SS	RQ-0907-SS	PG 9	PG 7	.67 (17)	.24 (6)	.34 (8.8)
RP-1107-SS	RQ-1107-SS	PG 11	PG 7	.87 (22)	.24 (6)	.35 (9)
RP-1109-SS	RQ-1109-SS	PG 11	PG 9	.87 (22)	.24 (6)	.35 (9)
RP-1309-SS	RQ-1309-SS	PG 13	PG 9	.87 (22)	.26 (6.5)	.37 (9.5)
RP-1311-SS	RQ-1311-SS	PG 13	PG 11	.87 (22)	.26 (6.5)	.37 (9.5)
RP-1609-SS	RQ-1609-SS	PG 16	PG 9	.94 (24)	.26 (6.5)	.37 (9.5)
RP-1611-SS	RQ-1611-SS	PG 16	PG 11	.94 (24)	.26 (6.5)	.37 (9.5)
RP-1613-SS	RQ-1613-SS	PG 16	PG 13	.94 (24)	.26 (6.5)	.37 (9.5)
RP-2111-SS	RQ-2111-SS	PG 21	PG 11	1.18 (30)	.28 (7)	.41 (10.3)
RP-2113-SS	RQ-2113-SS	PG 21	PG 13	1.18 (30)	.28 (7)	.41 (10.3)
RP-2116-SS	RQ-2116-SS	PG 21	PG 16	1.18 (30)	.28 (7)	.41 (10.3)
RP-2916-SS	RQ-2916-SS	PG 29	PG 16	1.57 (40)	.31 (8)	.45 (11.5)
RP-2921-SS	RQ-2921-SS	PG 29	PG 21	1.57 (40)	.31 (8)	.45 (11.5)
RP-3621-SS	RQ-3621-SS	PG 36	PG 21	1.97 (50)	.35 (9)	.49 (12.5)
RP-3629-SS	RQ-3629-SS	PG 36	PG 29	1.97 (50)	.35 (9)	.49 (12.5)
RP-4229-SS	RQ-4229-SS	PG 42	PG 29	2.24 (57)	.39 (10)	.53 (13.5)
RP-4236-SS	RQ-4236-SS	PG 42	PG 36	2.24 (57)	.39 (10)	.53 (13.5)
RP-4836-SS	RQ-4836-SS	PG 48	PG 36	2.52 (64)	.39 (10)	.53 (13.5)
RP-4842-SS	RQ-4842-SS	PG 48	PG 42	2.52 (64)	.39 (10)	.53 (13.5)



For inquiries - Please call our Inside Technical Sales Department (800-456-9012 or 303-699-1135).

More custom parts available online at www.sealconusa.com or upon request!

Buna-N O-Rings can be substituted with Silicone or Viton® O-Rings (see page 30). To order, add "-S" (Silicone) or "-V" (Viton®) to part number (e.g. RM-1612-SS-V) Viton® is a federally registered trademark of DuPont Dow Elastomer.



Adapters, Reducers & Enlargers

Enlargers - Nylon & Nickel Plated Brass

RoHS Deca BDE

Nylon Strain Relief

Nickel Plated Brass

PVDF / Steel

Accessories

Adapter, Reducer, Enlarger

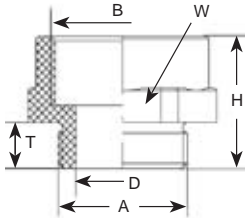
Conduit System

Technical Information

Other Products / Index



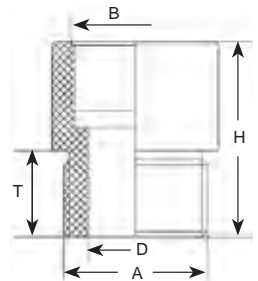
Type A



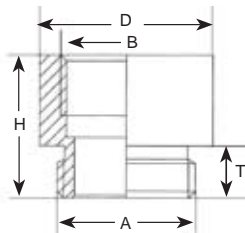
Enlargers - Metric to Metric Threads							
Part Numbers	Threads		Adapter Type	Dimensions in Inches (mm)			
	Male Thread A	Female Thread B		T	H	D	W
				Thread Length	Height	Inner Diameter	Wrench Flat
EM-1216-BK	M12 x 1.5	M16 x 1.5	A	.31 (8)	.79 (20)	.26 (6.5)	.83 (21)
EM-1620-BK	M16 x 1.5	M20 x 1.5	A	.31 (8)	.83 (21)	.35 (9)	.98 (25)
EM-2025-BK	M20 x 1.5	M25 x 1.5	A	.31 (8)	.91 (23)	.55 (14)	1.18 (30)
EM-2532-BK	M25 x 1.5	M32 x 1.5	C	.59 (15)	1.18 (30)	.65 (16.5)	N/A
EM-3240-BK	M32 x 1.5	M40 x 1.5	C	.59 (15)	1.36 (34.5)	.91 (23)	N/A
EM-4050-BK	M40 x 1.5	M50 x 1.5	C	.59 (15)	1.36 (34.5)	1.18 (30)	N/A
EM-5063-BK	M50 x 1.5	M63 x 1.5	C	.59 (15)	1.38 (35)	1.54 (39)	N/A



Type C



Enlargers - PG to PG Threads					
Part Numbers	Threads		Dimensions in Inches (mm)		
	Male Thread A	Female Thread B	D	T	H
			Outer Diameter	Thread Length	Height
EP-0709-BR	PG 7	PG 9	.67 (17)	.20 (5)	.59 (15)
EP-0911-BR	PG 9	PG 11	.79 (20)	.24 (6)	.65 (16.5)
EP-0913-BR	PG 9	PG 13	.87 (22)	.24 (6)	.69 (17.5)
EP-1113-BR	PG 11	PG 13	.87 (22)	.24 (6)	.69 (17.5)
EP-1116-BR	PG 11	PG 16	.94 (24)	.24 (6)	.73 (18.5)
EP-1121-BR	PG 11	PG 21	1.18 (30)	.24 (6)	.81 (20.5)
EP-1316-BR	PG 13	PG 16	.94 (24)	.26 (6.5)	.75 (19)
EP-1321-BR	PG 13	PG 21	1.18 (30)	.26 (6.5)	.83 (21)
EP-1621-BR	PG 16	PG 21	1.18 (30)	.26 (6.5)	.83 (21)
EP-1629-BR	PG 16	PG 29	1.54 (39)	.26 (6.5)	.88 (22.5)
EP-2129-BR	PG 21	PG 29	1.54 (39)	.28 (7)	.91 (23)
EP-2936-BR	PG 29	PG 36	1.97 (50)	.31 (8)	1.08 (27.5)
EP-3642-BR	PG 36	PG 42	2.24 (57)	.35 (9)	1.22 (31)
EP-4248-BR	PG 42	PG 48	2.52 (64)	.39 (10)	1.30 (33)



Enlargers - Metric to Metric Threads					
Part Numbers	Threads		Dimensions in Inches (mm)		
	Male Thread A	Female Thread B	D	T	H
			Outer Diameter	Thread Length	Height
EM-1216-BR	M12 x 1.5	M16 x 1.5	.71 (18)	.20 (5)	.59 (15)
EM-1620-BR	M16 x 1.5	M20 x 1.5	.87 (22)	.24 (6)	.69 (17.5)
EM-2025-BR	M20 x 1.5	M25 x 1.5	1.06 (27)	.26 (6.5)	.75 (19)
EM-2532-BR	M25 x 1.5	M32 x 1.5	1.34 (34)	.26 (6.5)	.83 (21)
EM-3240-BR	M32 x 1.5	M40 x 1.5	1.65 (42)	.28 (7)	.91 (23)
EM-4050-BR	M40 x 1.5	M50 x 1.5	2.09 (53)	.35 (9)	1.22 (31)
EM-5063-BR	M50 x 1.5	M63 x 1.5	2.60 (66)	.35 (9)	1.22 (31)

Enlargers - NPT to NPT Threads					
Part Numbers	Threads		Dimensions in Inches (mm)		
	Male Thread A	Female Thread B	D	T	H
			Outer Diameter	Thread Length	Height
EN-1234-BR	1/2" NPT	3/4" NPT	1.10 (28)	.79 (20)	1.50 (38)
EN-1210-BR	1/2" NPT	1" NPT	1.36 (34.5)	.79 (20)	1.75 (44.5)
EN-3410-BR	3/4" NPT	1" NPT	1.38 (35)	.71 (18)	1.69 (43)
EN-1054-BR	1" NPT	1-1/4" NPT	1.73 (44)	.94 (24)	1.97 (50)

Is your thread size off by one size?

These Enlargers will solve that threading problem.

They convert holes which fit PG, NPT or Metric threads to a larger female thread of the same thread type.

More custom parts available online at www.sealconusa.com or upon request!

Optional Locking Nuts, O-Rings & Other Accessories starting at page 28.