

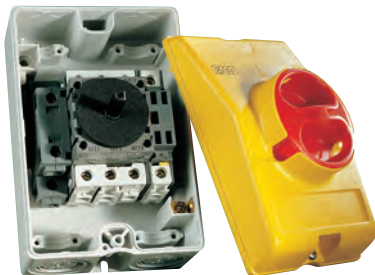
Disconnect Switches

A modular and flexible range



Contact gap
7 mm

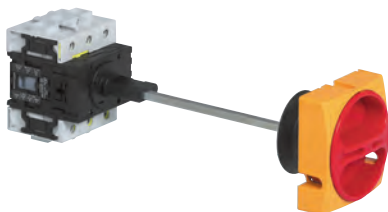
**Reversible
terminal feature**



► IN ENCLOSURE

- Degree of protection: up to IP 66
- For 25A to 100A size switches
- Cable entries with pre-formed knockouts
- Tamper-proof cover with padlockable handle
- Recessed area for optional plate
- A wide choice of associated contact blocks and enclosures available

Pages 160 to 161



► WITH CLUTCH DRIVE

- Metal shafts can be cut to length required
- With or without door interlock system
- Short or long metal shafts available

Pages 157 and 159

25A / 32A

▶ DOOR/PANEL MOUNTING

 Technical Info (p. 192)

PADLOCKABLE PRESENTATION

Yellow/Red Handle
Part Number

Grey Handle
Part Number



0172001



0174101

25 A

- 3P
- 3P + NC/NO
- 4P neutral on left
- 4P + NC/NO

- 0172001
- 0172011
- 0172021
- 0172031

- 0174001
- 0174011
- 0174021
- 0174031

32 A

- 3P
- 3P+NC/NO
- 4P neutral on left
- 4P + NC/NO

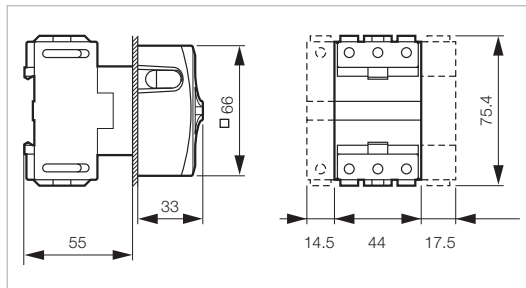
- 0172101
- 0172111
- 0172121
- 0172131

- 0174101
- 0174111
- 0174121
- 0174131

STANDARD VERSIONS IP40 RATED.

TO ORDER WITH IP65 GASKETS ADD -1 TO PART NUMBERS ABOVE.

I.E. 0172001-1

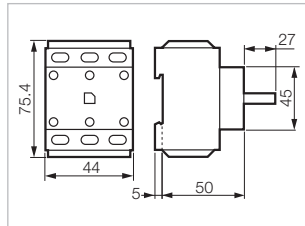


COMPONENTS AND ACCESSORIES

Part Number



0172000



3-pole switch body without handle

- 25 A
- 32 A

- 0172000
- 0172100

Additional pole

- 25 A
- 32 A

- 0172075
- 0172175

Neutral pole

- 25 A
- 32 A

- 0172065
- 0172165

Junction block

Ground or Neutral

0172185

Auxiliary contact

NC/NO

0172179

IP65 Seal Kit

0172267

Replacement Handle

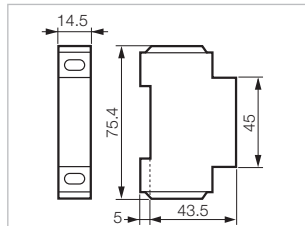
- 66 - Yellow/Red
- 66 - Grey

- 0172601
- 0174601



0172065

0172185



25A / 32A

▶ DOOR/PANEL MOUNTING



NON- PADLOCKABLE PRESENTATION

Yellow/Red Handle
Part Number

Grey Handle
Part Number



0172002



0174102

25 A

- 3P
- 3P + NC/NO
- 4P neutral on left
- 4P + NC/NO

- 0172002
- 0172012
- 0172022
- 0172032

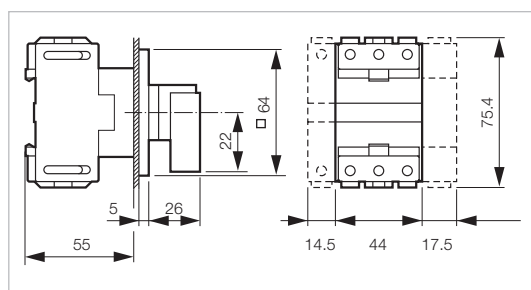
- 0174002
- 0174012
- 0174022
- 0174032

32 A

- 3P
- 3P + NC/NO
- 4P neutral on left
- 4P + NC/NO

- 0172102
- 0172112
- 0172122
- 0172132

- 0174102
- 0174112
- 0174122
- 0174132



STANDARD VERSIONS IP40 RATED.

TO ORDER WITH IP65 GASKETS ADD -1 TO PART NUMBERS ABOVE.

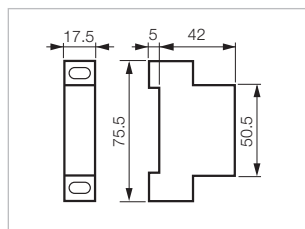
IE. 0172002-1

COMPONENTS AND ACCESSORIES

Part Number



0172179



3-pole switch body without handle

- 25 A
- 32 A

- 0172000
- 0172100

Additional pole

- 25 A
- 32 A

- 0172075
- 0172175

Neutral pole

- 25 A
- 32 A

- 0172065
- 0172165

Junction block

Ground or Neutral

0172185

Auxiliary contact

NC/NO

0172179

IP65 Seal Kit

0172267

Replacement Handle, Plate, and Frame

- 64 - Yellow/Red
- 64 - Grey

- 0172602
- 0174602



0172267

25A / 32A

▶ DOOR/PANEL MOUNTING - PADLOCKABLE

 Technical Info (p. 192)

PADLOCKABLE PRESENTATION Ø 22 SINGLE-HOLE MOUNTING

Yellow/Red Handle
Part Number

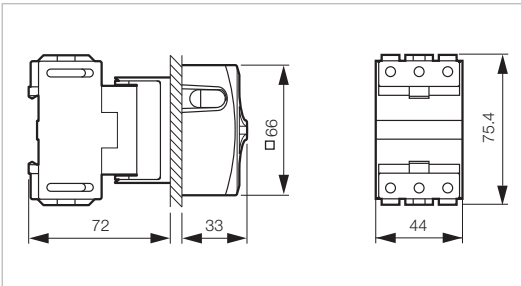


0172003

25 A
3P **0172003**
3P + NC/NO **0172013**
4P neutral on left **0172023**
4P + NC/NO **0172033**

32 A
3P **0172103**
3P+NC/NO **0172113**
4P neutral on left **0172123**
4P + NC/NO **0172133**

**STANDARD VERSIONS IP40 RATED.
NOT AVAILABLE IN IP65 VERSIONS.**

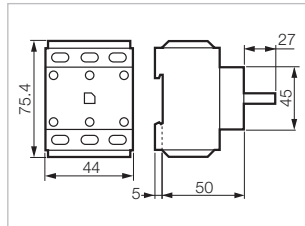


COMPONENTS AND ACCESSORIES

Part Number



0172000



3-pole switch body without handle

25 A **0172000**
32 A **0172100**

Additional pole

25 A **0172075**
32 A **0172175**

Neutral pole

25 A **0172065**
32 A **0172165**

Junction block

Ground or Neutral **0172185**

Auxiliary contact

NC/NO **0172179**

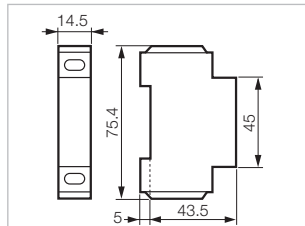
Replacement Handle

□ 66 - Ø 22 single-hole-mounting - Yellow/Red **0172603**



0172065

0172185



25A / 32A

▶ DOOR/PANEL MOUNTING - PADLOCKABLE

 Technical Info (p. 192)

NON-PADLOCKABLE PRESENTATION Ø 22 SINGLE-HOLE MOUNTING

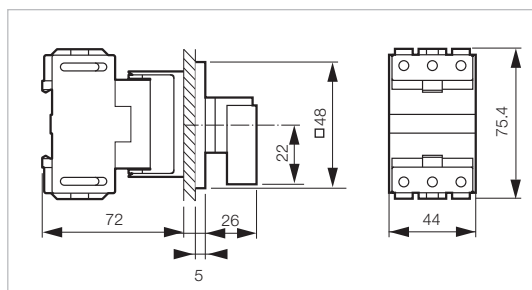
Yellow/Red Handle
Part Number



0172004

25 A	
3P	0172004
3P+NC/NO	0172014
4P neutral on left	0172024

32 A	
3P	0172104
3P+NC/NO	0172214
4P neutral on left	0172124



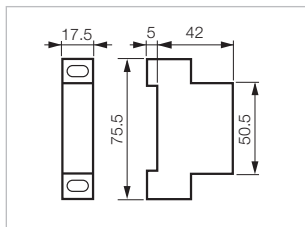
**STANDARD VERSIONS IP40 RATED.
NOT AVAILABLE IN IP65 VERSIONS.**

COMPONENTS AND ACCESSORIES

Part Number



0172179



3-pole switch body without handle

25 A	0172000
32 A	0172100

Additional pole

25 A	0172075
32 A	0172175

Neutral pole

25 A	0172065
32 A	0172165

Junction block

Ground or Neutral	0172185
-------------------	----------------

Auxiliary contact

NC/NO	0172179
-------	----------------

Replacement Handle, Plate, and Frame

<input type="checkbox"/> 48 - Ø 22 single-hole-mounting - Yellow/Red	0172604
--	----------------

25A / 32A

► DIN-RAIL IN-PANEL MOUNTING

 Technical Info (p. 192)

PADLOCKABLE PRESENTATION

Grey Handle
Part Number



0174005

25 A

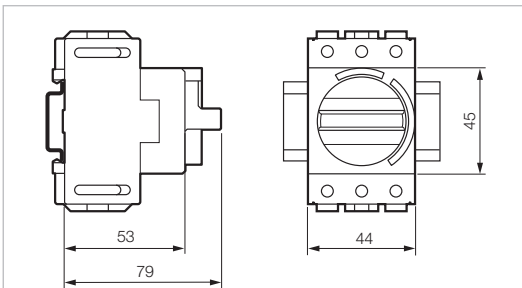
3P
3P + NC/NO
4P neutral on left
4P + NC/NO

0174005
0174015
0174025
0174035

32 A

3P
3P+NC/NO
4P neutral on left
4P + NC/NO

0174105
0174115
0174125
0174135

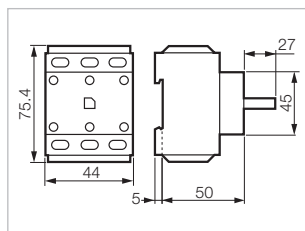


COMPONENTS AND ACCESSORIES

Part Number



0172000



3-pole switch body without handle

25 A
32 A

0172000
0172100

Additional pole

25 A
32 A

0172075
0172175

Neutral pole

25 A
32 A

0172065
0172165

Junction block

Ground or Neutral

0172185

Auxiliary contact

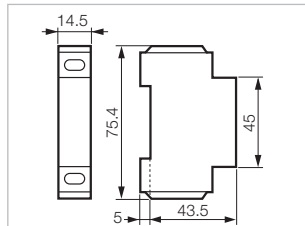
NC/NO

0172179



0172065

0172185



25A / 32A

▶ DOOR INTERLOCK MOUNTING - NO METAL SHAFT EXTENSION



PADLOCKABLE PRESENTATION

Yellow/Red Handle
Part Number

Grey Handle
Part Number



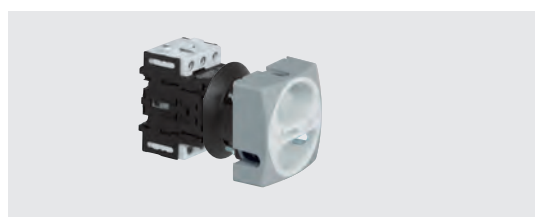
0165009NS

25 A

3P
3P + NC/NO
4P neutral on left
4P + NC/NO

0165009NS
0165019NS
0165029NS
0165039NS

0168009NS
0168019NS
0168029NS
0168039NS



0168109NS

32 A

3P
3P + NC/NO
4P neutral on left
4P + NC/NO

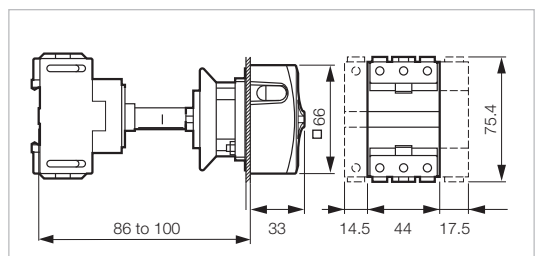
0165109NS
0165119NS
0165129NS
0165139NS

0168109NS
0168119NS
0168129NS
0168139NS

STANDARD VERSIONS IP40 RATED.

TO ORDER WITH IP65 GASKETS ADD -1 TO PART NUMBERS ABOVE.

IE. 0165009NS-1

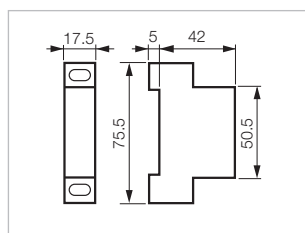


COMPONENTS AND ACCESSORIES

Part Number



0172179



3-pole switch body without handle

25 A
32 A

0172000
0172100

Additional pole

25 A
32 A

0172075
0172175

Neutral pole

25 A
32 A

0172065
0172165

Junction block

Ground or Neutral

0172185

Auxiliary contact

NC/NO

0172179

IP65 Seal Kit

0174259

Replacement Handle

66 - Yellow/Red
 66 - Grey

0172601
0174601



0174259

25A / 32A

▶ DOOR INTERLOCK MOUNTING - SHORT METAL SHAFT EXTENSION

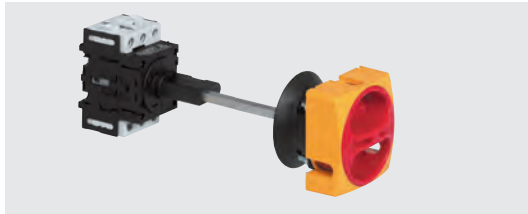


Technical Info (p.192)

PADLOCKABLE PRESENTATION

Yellow/Red Handle
Part Number

Grey Handle
Part Number



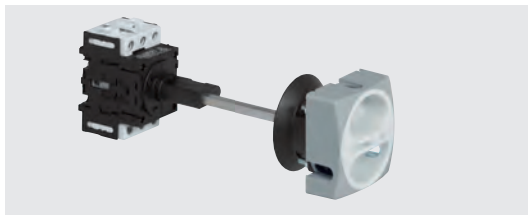
0165009SS

25 A

- 3P
- 3P + NC/NO
- 4P neutral on left
- 4P + NC/NO

- 0165009SS
- 0165019SS
- 0165029SS
- 0165039SS

- 0168009SS
- 0168019SS
- 0168029SS
- 0168039SS



0168109SS

32 A

- 3P
- 3P + NC/NO
- 4P neutral on left
- 4P + NC/NO

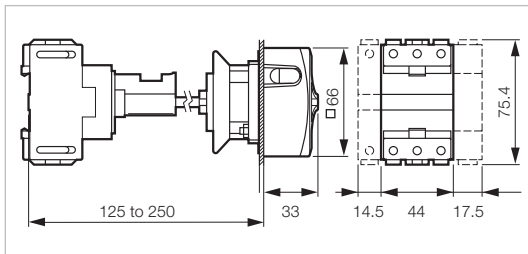
- 0165109SS
- 0165119SS
- 0165129SS
- 0165139SS

- 0168109SS
- 0168119SS
- 0168129SS
- 0168139SS

STANDARD VERSIONS IP40 RATED.

TO ORDER WITH IP65 GASKETS ADD -1 TO PART NUMBERS ABOVE.

IE. 0165009SS-1

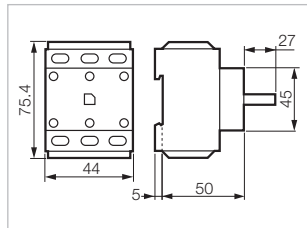


COMPONENTS AND ACCESSORIES

Part Number



0172000



3-pole switch body without handle

- 25 A
- 32 A

- 0172000
- 0172100

Additional pole

- 25 A
- 32 A

- 0172075
- 0172175

Neutral pole

- 25 A
- 32 A

- 0172065
- 0172165

Junction block

Ground or Neutral

0172185

Auxiliary contact

NC/NO

0172179

IP65 Seal Kit

0174259

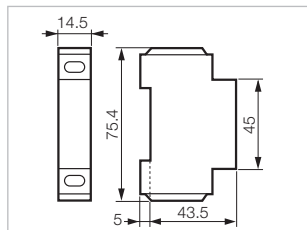
Replacement Handle

- 66 - Yellow/Red
- 66 - Grey

- 0172601
- 0174601



0172065 0172185



25A / 32A

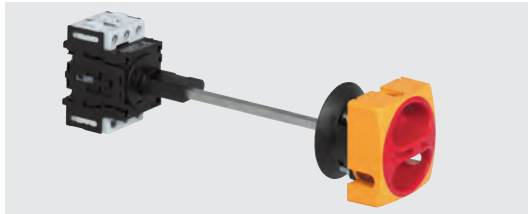
▶ DOOR INTERLOCK MOUNTING - LONG METAL SHAFT EXTENSION



PADLOCKABLE PRESENTATION

Yellow/Red Handle
Part Number

Grey Handle
Part Number



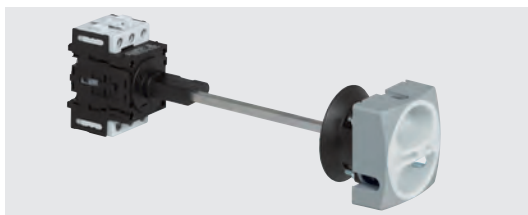
0165009LS

25 A

3P
3P + NC/NO
4P neutral on left
4P + NC/NO

0165009LS
0165019LS
0165029LS
0165039LS

0168009LS
0168019LS
0168029LS
0168039LS



0168109LS

32 A

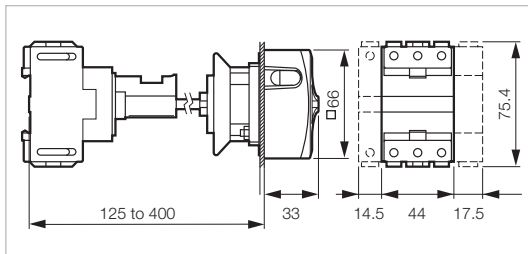
3P
3P + NC/NO
4P neutral on left
4P + NC/NO

0165109LS
0165119LS
0165129LS
0165139LS

0168109LS
0168119LS
0168129LS
0168139LS

STANDARD VERSIONS IP40 RATED.

TO ORDER WITH IP65 GASKETS ADD -1 TO PART NUMBERS ABOVE.
IE. 0165009LS-1

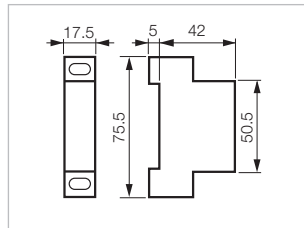


COMPONENTS AND ACCESSORIES

Part Number



0172179



3-pole switch body without handle

25 A
32 A

0172000
0172100

Additional pole

25 A
32 A

0172075
0172175

Neutral pole

25 A
32 A

0172065
0172165

Junction block

Ground or Neutral

0172185

Auxiliary contact

NC/NO

0172179

IP65 Seal Kit

0174259

Replacement Handle

66 - Yellow/Red
 66 - Grey

0172601
0174601

25A / 32A

► ENCLOSURES



PADLOCKABLE PRESENTATION

Yellow/Red Handle
Part Number

Grey Handle
Part Number



0172061



0174161

25 A

3P
3P + NC/NO
4P neutral on left
4P + NC/NO

0172061
0172071
0172081
0172091

0174061
0174071
0174081
0174091

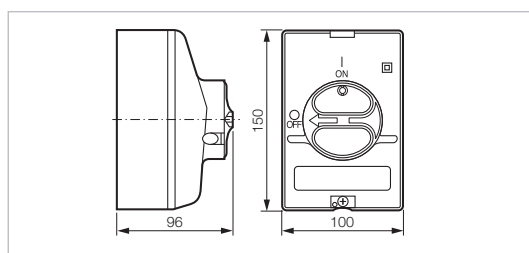
32 A

3P
3P+NC/NO
4P neutral on left
4P + NC/NO

0172161
0172171
0172181
0172191

0174161
0174171
0174181
0174191

STANDARD VERSIONS IP66 RATED.



Cable entries: 6 x PG16 and 4 x M25

PADLOCKABLE PRESENTATION

Yellow/Red Handle
Part Number

Grey Handle
Part Number



0172009



0174109

25 A

6P
6P + NC/NO

0172009
0172029

0174009
0174029

32 A

6P
6P+NC/NO

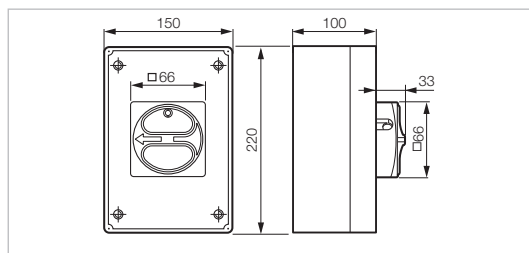
0172109
0172129

0174109
0174129

STANDARD VERSIONS IP40 RATED.

TO ORDER WITH IP65 GASKETS ADD -6 TO PART NUMBERS ABOVE.

IE. 0172009-6



Cable entries: 4 x PG21

CABLE GLANDS

Part Number



PG16-GY

PG16
PG21

Cable Range 10mm - 14mm
Cable Range 13mm - 18mm

PG16-GY
PG21-GY

25A / 32A

► ENCLOSURES



NON- PADLOCKABLE PRESENTATION

Yellow/Red Handle
Part Number

Grey Handle
Part Number



0172062

0174162

25 A

- 3P
- 3P + NC/NO
- 4P neutral on left
- 4P + NC/NO

0172062
0172072
0172082
0172092

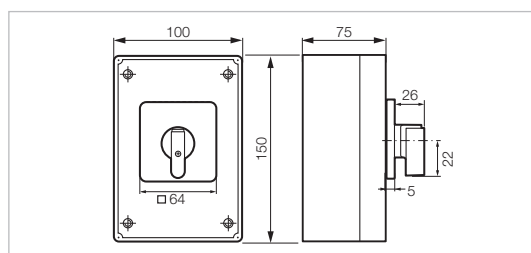
0174062
0174072
0174082
0174092

32 A

- 3P
- 3P+NC/NO
- 4P neutral on left
- 4P + NC/NO

0172162
0172172
0172182
0172192

0174162
0174172
0174182
0174192



Cable entries: 4 x PG16

STANDARD VERSIONS IP40 RATED.

**TO ORDER WITH IP65 GASKETS ADD -6 TO PART NUMBERS ABOVE.
IE. 0172062-6**

NON-PADLOCKABLE PRESENTATION

Yellow/Red Handle
Part Number

Grey Handle
Part Number



0172019

0174119

25 A

- 6P
- 6P + NC/NO

0172019
0172039

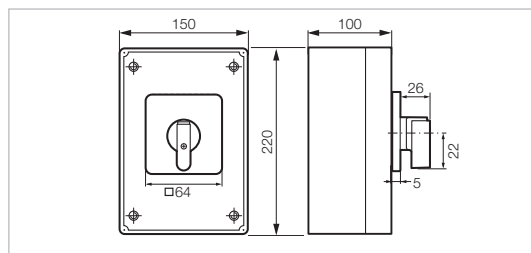
0174019
0174039

32 A

- 6P
- 6P+NC/NO

0172119
0172139

0174119
0174139



Cable entries: 4 x PG21

STANDARD VERSIONS IP40 RATED.

**TO ORDER WITH IP65 GASKETS ADD -6 TO PART NUMBERS ABOVE.
IE. 0172019-6**

CABLE GLANDS

Part Number



PG16-GY

PG16
PG21

Cable Range 10mm - 14mm
Cable Range 13mm - 18mm

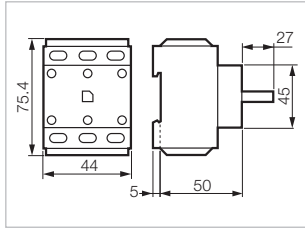
PG16-GY
PG21-GY

25A / 32A

► BLOCKS

 Technical Info (p. 192)

Part Number

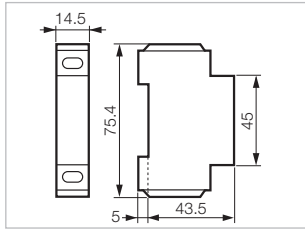


3-pole switch body without handle

25 A
32 A

0172000
0172100

0172000



Additional pole
(for use in enclosure only)

25 A
32 A

0172075
0172175

Neutral pole

25 A
32 A

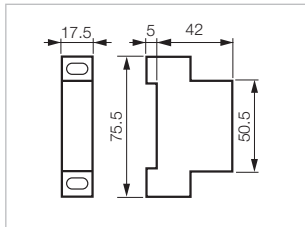
0172065
0172165

0172065

0172185

Junction block
Ground or Neutral

0172185



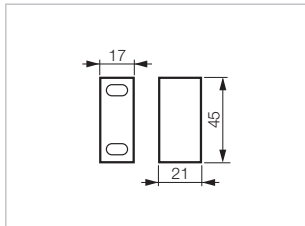
Auxiliary contact
NC/NO

1 pole early break

0172179

0172195

0172179



0172195

25A / 32A

▶ HANDLES

 Technical Info (p. 192)

Part Number



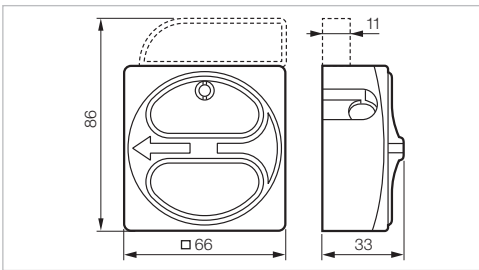
0172601

Padlockable presentation

Padlock with $\varnothing 6$ to 8 mm

- 66 - Yellow/Red
- 66 - Grey
- 66 - $\varnothing 22$ single-hole-mounting - Yellow/Red

0172601
0174601
0172603



0172602

Dim. Ref. 0172602

A: 64
 B: 80

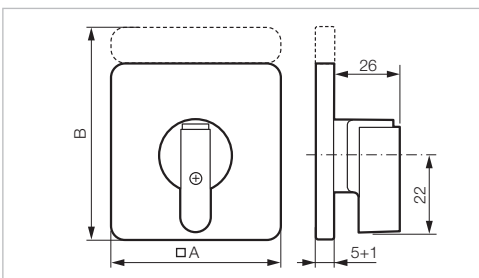
Dim. ref. 0172604

A: 48
 B: 65

With plate, frame and handle

- 64 - Yellow/Red
- 64 - Grey
- 48 - $\varnothing 22$ single-hole-mounting - Yellow/Red

0172602
0174602
0172604



25A / 32A

▶ EMPTY ENCLOSURES

 Technical Info (p. 192)

PADLOCKABLE PRESENTATION

Part Number



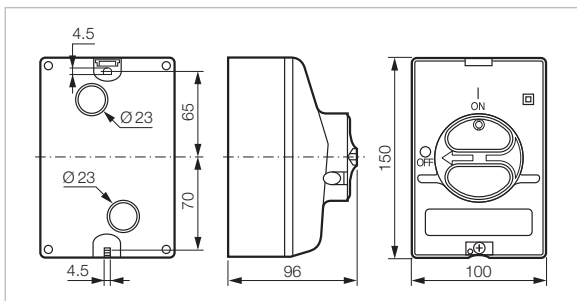
0172399

Dimensions 150 x 100 x 96 mm
 Supplied with padlockable handle,
 weatherproof seal and relay terminal
 For 3 and 4-pole switches with and without NC/NO
 Cable entries: 4 x PG16/M25

IP66-IK7

Grey base - yellow cover - red handle
 Grey base - grey cover - grey handle

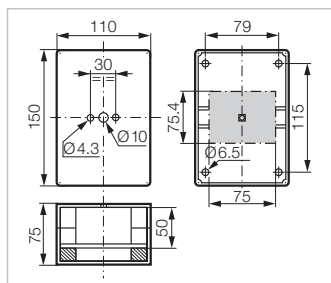
0172399
0174399



WITHOUT HANDLE



0172549

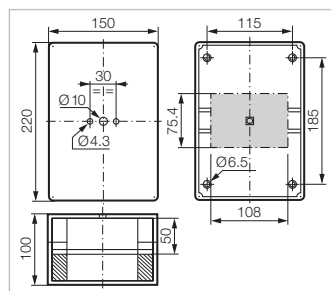


Grey - Up to 4 poles + auxiliary contact
 150 x 110 x 75 mm
 Cable entries: 4 x PG16

0172549



0172559



Grey - Up to 6 poles + auxiliary contact
 220 x 150 x 100 mm
 Cable entries: 4 x PG21

0172559

25A / 32A

▶ ACCESSORIES

 Technical Info (p. 192)

Part Number



0172167



0174569



0172649



0174189



0174179



0174249



0172267



PG16-GY



SMT25

Terminal covers

For 3-pole body switch

For additional pole, neutral pole or junction block

For auxiliary contact NC/NO (pair)

For early break auxiliary contact

0172167

0172177

0172189

0172199

Connection terminal kit

Terminal connection for ground or neutral

0174449

Self-adhesive plates (for enclosures)

Blank

Engraved MAIN SWITCH

0174599

0174569

Duty labels

Blank

Engraved MAIN SWITCH

0172629

0172649

Kit for clutch drive presentation

Short shaft without door interlock

Long shaft without door interlock

Without shaft and without door interlock

0174189

0174199

0174179

Kit for door interlock

0174249

IP 65 seal kits

For front mounting switches and enclosures

Padlockable 66 or plate and frame 64 or 72

0172267

For rear mounting switches with clutch drive

Padlockable 66 or plate and frame 64 or 72

0174259

Cable Glands

PG16

Cable Range 10mm - 14mm

PG16-GY

PG21

Cable Range 13mm - 18mm

PG21-GY

Stepped Gland

M25

Cable Range 5mm - 21mm

STM25

50A / 63A

▶ DOOR/PANEL MOUNTING

 Technical Info (p. 192)

PADLOCKABLE PRESENTATION

Yellow/Red Handle
Part Number

Grey Handle
Part Number



0172201



0174201

50 A

3P
3P + NC/NO
4P neutral on left
4P + NC/NO

0172201
0172211
0172221
0172231

0174201
0174211
0174221
0174231

63 A

3P
3P+NC/NO
4P neutral on left
4P + NC/NO

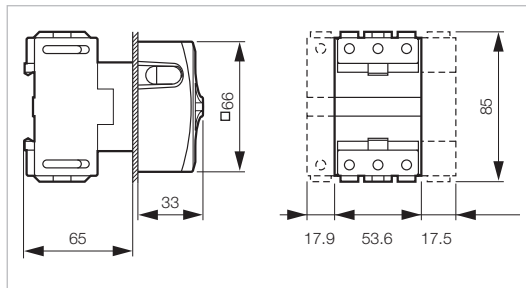
0172301
0172311
0172321
0172331

0174301
0174311
0174321
0174331

STANDARD VERSIONS IP40 RATED.

TO ORDER WITH IP65 GASKETS ADD -1 TO PART NUMBERS ABOVE.

I.E. 0172201-1

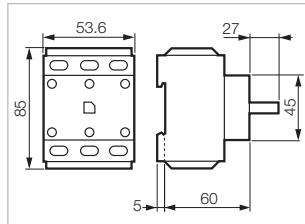


COMPONENTS AND ACCESSORIES

Part Number



0172300



3-pole switch body without handle

50 A
63 A

0172200
0172300

Additional pole

50 A
63 A

0172275
0172375

Neutral pole

50 A
63 A

0172265
0172365

Junction block

Ground or Neutral

0172385

Auxiliary contact

NC/NO

0172179

IP65 Seal Kit

0172267

Replacement Handle

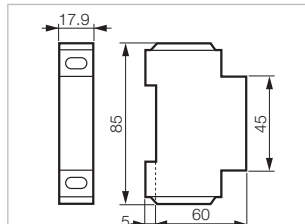
66 - Yellow/Red
 66 - Grey

0172601
0174601



0172375

0172385



50A / 63A

▶ DOOR/PANEL MOUNTING



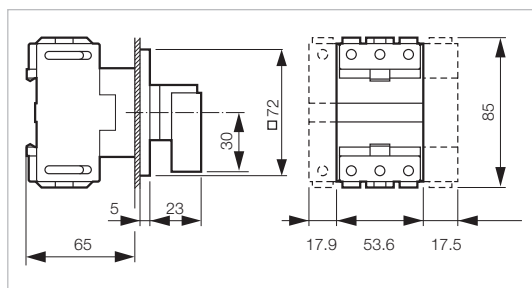
NON- PADLOCKABLE PRESENTATION



0172202



0174202



50 A

- 3P
- 3P + NC/NO
- 4P neutral on left
- 4P + NC/NO

- 0172202
- 0172212
- 0172222
- 0172232

Grey Handle
Part Number

- 0174202
- 0174212
- 0174222
- 0174232

63 A

- 3P
- 3P + NC/NO
- 4P neutral on left
- 4P + NC/NO

- 0172302
- 0172312
- 0172322
- 0172332

- 0174302
- 0174312
- 0174322
- 0174332

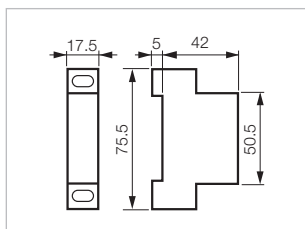
STANDARD VERSIONS IP40 RATED.
TO ORDER WITH IP65 GASKETS ADD -1 TO PART NUMBERS ABOVE.
IE. 0172002-1

COMPONENTS AND ACCESSORIES

Part Number



0172179



3-pole switch body without handle

- 50 A
- 63 A

- 0172200
- 0172300

Additional pole

- 50 A
- 63 A

- 0172275
- 0172375

Neutral pole

- 50 A
- 63 A

- 0172265
- 0172365

Junction block Ground or Neutral

- 0172385

Auxiliary contact

- NC/NO

- 0172179

IP65 Seal Kit

- 0172267

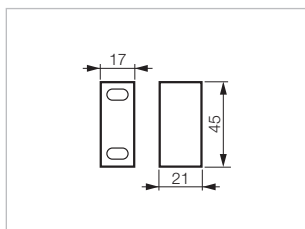
Replacement Handle

- 72 - Yellow/Red
- 72 - Grey

- 0172612
- 0174612



0172395



50A / 63A

► DIN-RAIL IN-PANEL MOUNTING

 Technical Info (p. 192)

PADLOCKABLE PRESENTATION

Grey Handle
Part Number



0174205

50 A

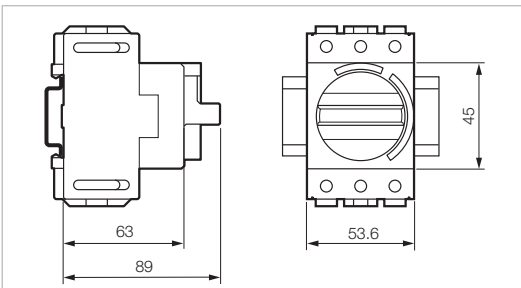
- 3P
- 3P + NC/NO
- 4P neutral on left
- 4P + NC/NO

- 0174205
- 0174215
- 0174225
- 0174235

63 A

- 3P
- 3P+NC/NO
- 4P neutral on left
- 4P + NC/NO

- 0174305
- 0174315
- 0174325
- 0174335

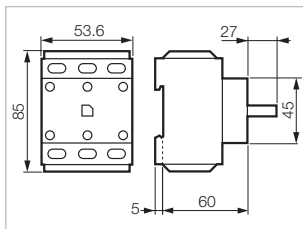


COMPONENTS AND ACCESSORIES

Part Number



0172300



3-pole switch body without handle

- 50 A
- 63 A

- 0172200
- 0172300

Additional pole

- 50 A
- 63 A

- 0172275
- 0172375

Neutral pole

- 50 A
- 63 A

- 0172265
- 0172365

Junction block

Ground or Neutral

- 0172385

Auxiliary contact

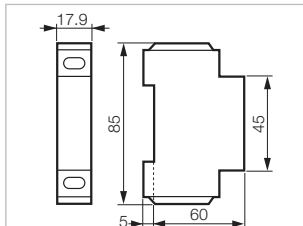
NC/NO

- 0172179



0172375

0172385



50A / 63A

▶ DOOR INTERLOCK MOUNTING - NO METAL SHAFT EXTENSION



PADLOCKABLE PRESENTATION

Yellow/Red Handle
Part Number

Grey Handle
Part Number



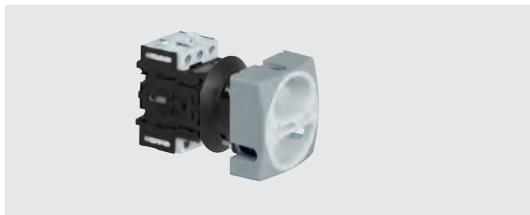
0165209NS

50 A

3P
3P + NC/NO
4P neutral on left
4P + NC/NO

0165209NS
0165219NS
0165229NS
0165239NS

0168209NS
0168219NS
0168229NS
0168239NS



0168209NS

63 A

3P
3P + NC/NO
4P neutral on left
4P + NC/NO

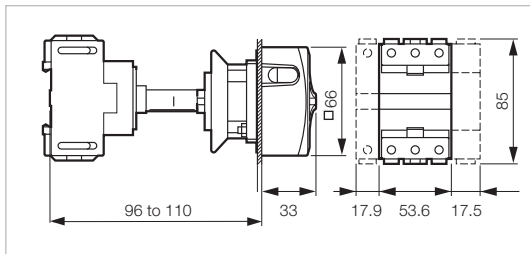
0165309NS
0165319NS
0165329NS
0165339NS

0168309NS
0168319NS
0168329NS
0168339NS

STANDARD VERSIONS IP40 RATED.

TO ORDER WITH IP65 GASKETS ADD -1 TO PART NUMBERS ABOVE.

IE. 0165209NS-1

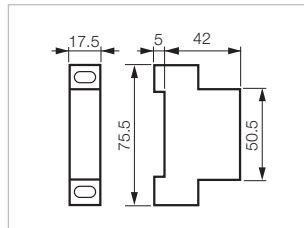


COMPONENTS AND ACCESSORIES

Part Number



0172179



3-pole switch body without handle

50 A
63 A

0172200
0172300

Additional pole

50 A
63 A

0172275
0172375

Neutral pole

50 A
63 A

0172265
0172365

Junction block

Ground or Neutral

0172385

Auxiliary contact

NC/NO

0172179

IP65 Seal Kit

0174259

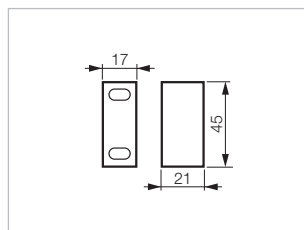
Replacement Handle, Plate, and Frame

66 - Yellow/Red
 66 - Grey

0172601
0174601



0172395



50A / 63A

▶ DOOR INTERLOCK MOUNTING - SHORT METAL SHAFT EXTENSION

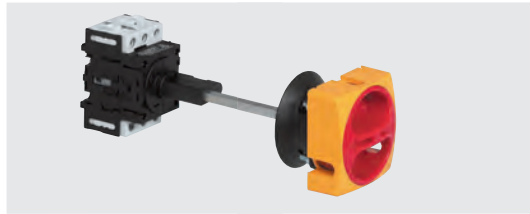


Technical Info (p.192)

PADLOCKABLE PRESENTATION

Yellow/Red Handle
Part Number

Grey Handle
Part Number



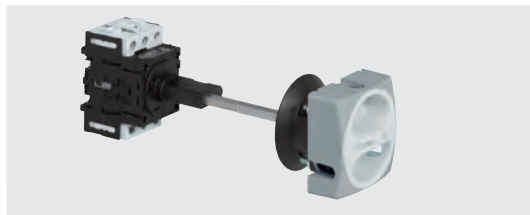
01652095S

50 A

- 3P
- 3P + NC/NO
- 4P neutral on left
- 4P + NC/NO

- 01652095S
- 01652195S
- 01652295S
- 01652395S

- 01682095S
- 01682195S
- 01682295S
- 01682395S



01682095S

63 A

- 3P
- 3P + NC/NO
- 4P neutral on left
- 4P + NC/NO

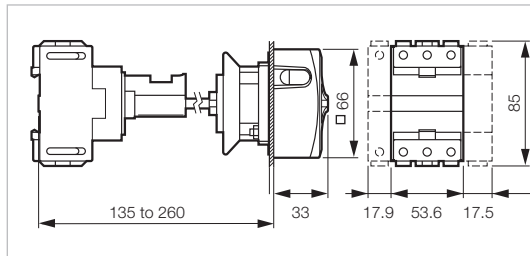
- 01653095S
- 01653195S
- 01653295S
- 01653395S

- 01683095S
- 01683195S
- 01683295S
- 01683395S

STANDARD VERSIONS IP40 RATED.

TO ORDER WITH IP65 GASKETS ADD -1 TO PART NUMBERS ABOVE.

IE. 01652095S-1

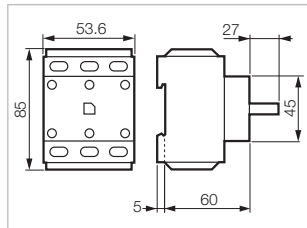


COMPONENTS AND ACCESSORIES

Part Number



0172300



3-pole switch body without handle

- 50 A
- 63 A

- 0172200
- 0172300

Additional pole

- 50 A
- 63 A

- 0172275
- 0172375

Neutral pole

- 50 A
- 63 A

- 0172265
- 0172365

Junction block

Ground or Neutral

0172385

Auxiliary contact

NC/NO

0172179

IP65 Seal Kit

0174259

Replacement Handle

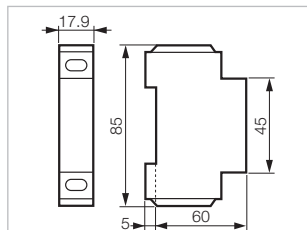
- 66 - Yellow/Red
- 66 - Grey

- 0172601
- 0174601



0172375

0172385



50A / 63A

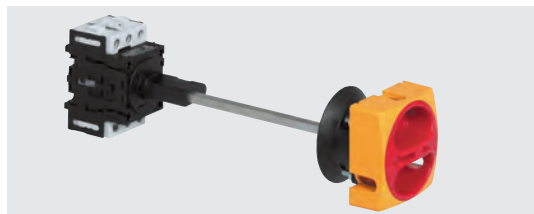
▶ DOOR INTERLOCK MOUNTING - LONG METAL SHAFT EXTENSION



PADLOCKABLE PRESENTATION

Yellow/Red Handle
Part Number

Grey Handle
Part Number



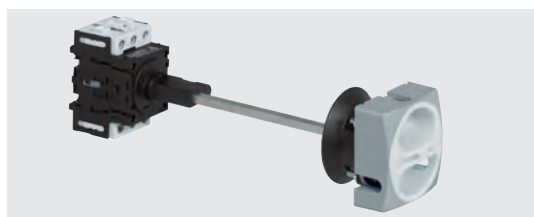
0165209LS

50 A

- 3P
- 3P + NC/NO
- 4P neutral on left
- 4P + NC/NO

- 0165209LS
- 0165219LS
- 0165229LS
- 0165239LS

- 0168209LS
- 0168219LS
- 0168229LS
- 0168239LS



0168209LS

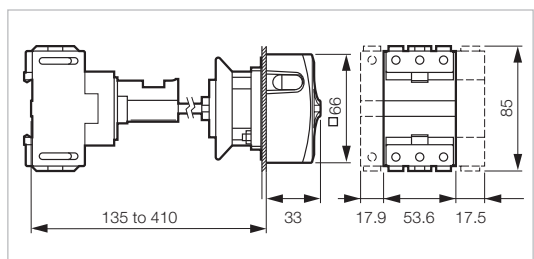
63 A

- 3P
- 3P + NC/NO
- 4P neutral on left
- 4P + NC/NO

- 0165309LS
- 0165319LS
- 0165329LS
- 0165339LS

- 0168309LS
- 0168319LS
- 0168329LS
- 0168339LS

STANDARD VERSIONS IP40 RATED.
TO ORDER WITH IP65 GASKETS ADD -1 TO PART NUMBERS ABOVE.
IE. 0165209LS-1

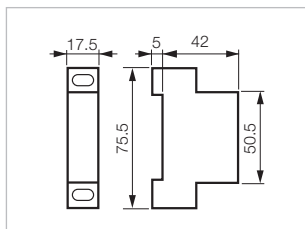


COMPONENTS AND ACCESSORIES

Part Number



0172179



3-pole switch body without handle

- 50 A
- 63 A

- 0172200
- 0172300

Additional pole

- 50 A
- 63 A

- 0172275
- 0172375

Neutral pole

- 50 A
- 63 A

- 0172265
- 0172365

Junction block
Ground or Neutral

- 0172385

Auxiliary contact

- NC/NO

- 0172179

IP65 Seal Kit

- 0174259

Replacement Handle

- 66 - Yellow/Red
- 66 - Grey

- 0172601
- 0174601

50A / 63A

► ENCLOSURES

 Technical Info (p. 192)

PADLOCKABLE PRESENTATION

Yellow/Red Handle
Part Number

Grey Handle
Part Number



0172261

0174261

50 A

3P
3P + NC/NO
4P neutral on left
4P + NC/NO

0172261
0172271
0172281
0172291

0174261
0174271
0174281
0174291

63 A

3P
3P+NC/NO
4P neutral on left
4P + NC/NO

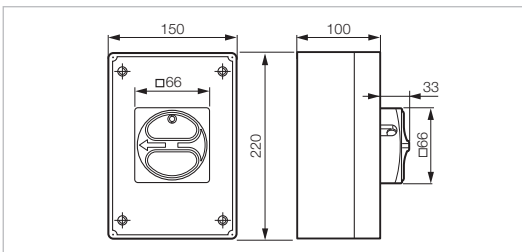
0172361
0172371
0172381
0172391

0174361
0174371
0174381
0174391

STANDARD VERSIONS IP40 RATED.

TO ORDER WITH IP65 GASKETS ADD -6 TO PART NUMBERS ABOVE.

IE. 0172261-6



Cable entries: 4 x PG21

PADLOCKABLE PRESENTATION

Yellow/Red Handle
Part Number

Grey Handle
Part Number



0172209

0174209

50 A

6P
6P + NC/NO

0172209
0172229

0174209
0174229

63 A

6P
6P+NC/NO

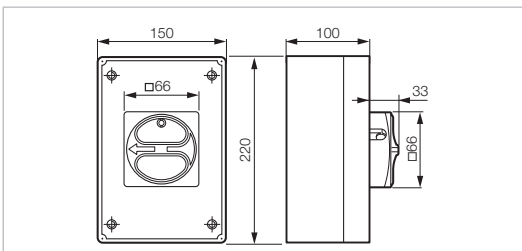
0172309
0172329

0174309
0174329

STANDARD VERSIONS IP40 RATED.

TO ORDER WITH IP65 GASKETS ADD -6 TO PART NUMBERS ABOVE.

IE. 0172209-6



Cable entries: 4 x PG29

CABLE GLANDS

Part Number



PG21-GY

PG21
PG29

Cable Range 13mm - 18mm
Cable Range 18mm - 25mm

PG21-GY
PG29-GY

50A / 63A

► ENCLOSURES

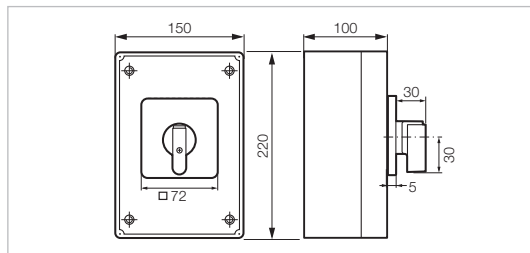


NON- PADLOCKABLE PRESENTATION



0172262

0174262



Cable entries: 4 x PG21

50 A

- 3P
- 3P + NC/NO
- 4P neutral on left
- 4P + NC/NO

Yellow/Red Handle
Part Number

- 0172262
- 0172272
- 0172282
- 0172292

Grey Handle
Part Number

- 0174262
- 0174272
- 0174282
- 0174292

63 A

- 3P
- 3P+NC/NO
- 4P neutral on left
- 4P + NC/NO

- 0172362
- 0172372
- 0172382
- 0172392

- 0174362
- 0174372
- 0174382
- 0174392

STANDARD VERSIONS IP40 RATED.

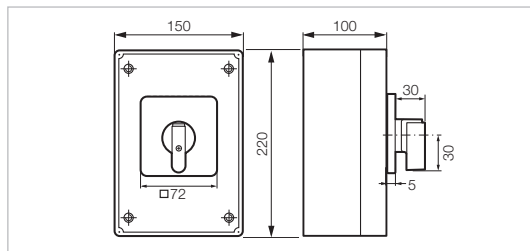
**TO ORDER WITH IP65 GASKETS ADD -6 TO PART NUMBERS ABOVE.
IE. 0172262-6**

NON- PADLOCKABLE PRESENTATION



0172219

0174219



Cable entries: 4 x PG29

50 A

- 6P
- 6P + NC/NO

Yellow/Red Handle
Part Number

- 0172219
- 0172239

Grey Handle
Part Number

- 0174219
- 0174239

63 A

- 6P
- 6P+NC/NO

- 0172319
- 0172339

- 0174319
- 0174339

STANDARD VERSIONS IP40 RATED.

**TO ORDER WITH IP65 GASKETS ADD -6 TO PART NUMBERS ABOVE.
IE. 0172219-6**

CABLE GLANDS

Part Number



PG21-GY

- PG21
- PG29

- Cable Range 13mm - 18mm
- Cable Range 18mm - 25mm

- PG21-GY
- PG29-GY

50A / 63A

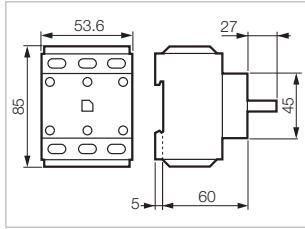
► BLOCKS

 Technical Info (p. 192)

Part Number



0172300



3-pole body switch without presentation

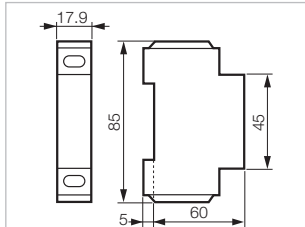
50 A
63 A

0172200
0172300



0172375

0172385



Additional pole
(for use in enclosure only)

50 A
63 A

0172275
0172375

Neutral pole

50 A
63 A

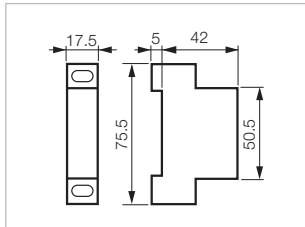
0172265
0172365

Junction block
Ground or Neutral

0172385



0172179



Auxiliary contact

NC/NO

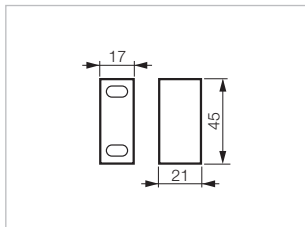
0172179

1 pole early break

0172395



0172395



50A / 63A

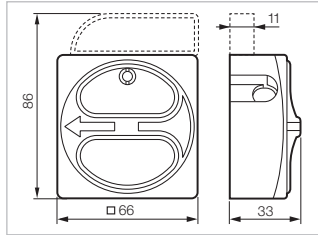
▶ HANDLES

 Technical Info (p. 192)

Part Number



0172601



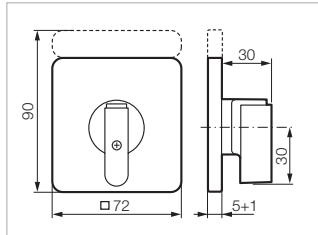
Padlockable presentation
Padlock: \varnothing 6 to 8 mm

- 66 - Yellow/Red
- 66 - Grey

0172601
0174601



0172612



With plate, frame and handle

- 72 - Yellow/Red
- 72 - Grey

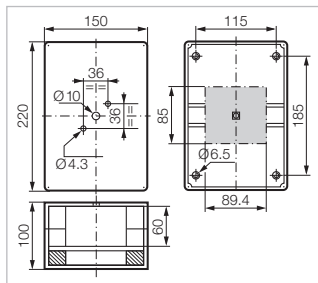
0172612
0174612

▶ EMPTY ENCLOSURES

WITHOUT HANDLE



0172569

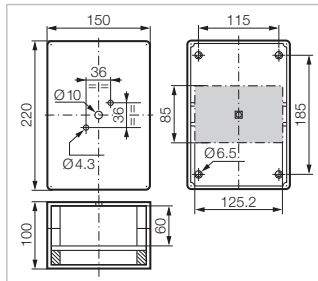


Grey - Up to 4 poles + auxiliary contact
220 x 150 x 100 mm
Cable entries: 4 x PG21

0172569



0172579










Grey - Up to 6 poles + auxiliary contact
220 x 150 x 100 mm
Cable entries: 4 x PG29

0172579

50A / 63A

▶ ACCESSORIES

 Technical Info (p. 192)

		Part Number
		
0172367	Terminal covers For 3-pole switch For additional pole, neutral pole or junction block For NC/NO auxiliary contact (pair) For early break auxiliary contact	0172367 0172377 0172189 0172199
		
0172649	Duty labels Blank Engraved INTER PRINCIPAL Engraved MAIN SWITCH	0172629 0172639 0172649
		
0174189	Kit for clutch drive presentation Short shaft without door interlock Long shaft without door interlock Without shaft and without door interlock	0174189 0174199 0174179
		
0174179		
		
0174249	kit for door interlock	0174249
IP 65 seal kit		
For front mounting switches and enclosures		
	Padlockable <input type="checkbox"/> 66 or plate and frame <input type="checkbox"/> 64 or <input type="checkbox"/> 72	0172267
For rear mounting with clutch drive		
	Padlockable <input type="checkbox"/> 66 or plate and frame <input type="checkbox"/> 64 or <input type="checkbox"/> 72	0174259
		
0172267	Cable Glands PG21 Cable Range 13mm - 18mm PG29 Cable Range 18mm - 25mm	PG21-GY PG29-GY
		
PG21-GY		

80A / 100A

▶ DOOR/PANEL MOUNTING

 Technical Info (p.192)

PADLOCKABLE PRESENTATION

Yellow/Red Handle
Part Number

Grey Handle
Part Number



0172401



0174501

80 A

- 3P
- 3P + NC/NO
- 4P neutral on left
- 4P + NC/NO

- 0172401
- 0172411
- 0172421
- 0172431

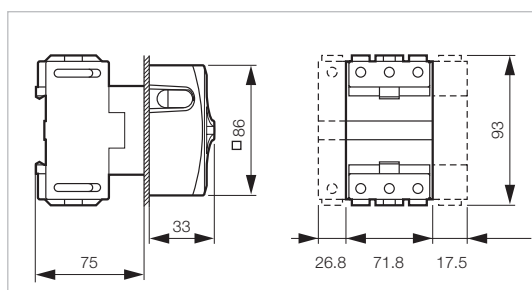
- 0174401
- 0174411
- 0174421
- 0174431

100 A

- 3P
- 3P+NC/NO
- 4P neutral on left
- 4P + NC/NO

- 0172501
- 0172511
- 0172521
- 0172531

- 0174501
- 0174511
- 0174521
- 0174531



STANDARD VERSIONS IP40 RATED.

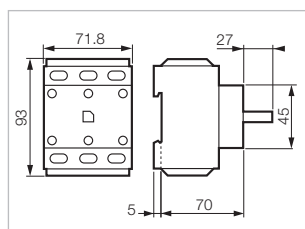
TO ORDER WITH IP65 GASKETS ADD -1 TO PART NUMBERS ABOVE.
IE. 0172401-1

COMPONENTS AND ACCESSORIES

Part Number



0172400



3-pole switch body without handle

- 80 A
- 100 A

- 0172400
- 0172500

Additional pole

- 80 A
- 100 A

- 0172475
- 0172575

Neutral pole

- 80 A
- 100 A

- 0172465
- 0172565

Junction block

Ground or Neutral

0172585

Auxiliary contact

NC/NO

0172179

IP65 Seal Kit

0172277

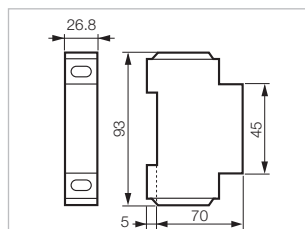
Replacement Handle

- 86 - Yellow/Red
- 86 - Grey

- 0172621
- 0174621



0172475



80A / 100A

▶ DOOR/PANEL MOUNTING



Technical Info (p.192)

NON- PADLOCKABLE PRESENTATION

Yellow/Red Handle
Part Number

Grey Handle
Part Number



0172402



0174502

80 A

3P
3P + NC/NO
4P neutral on left
4P + NC/NO

0172402
0172412
0172422
0172432

0174402
0174412
0174422
0174432

100 A

3P
3P + NC/NO
4P neutral on left
4P + NC/NO

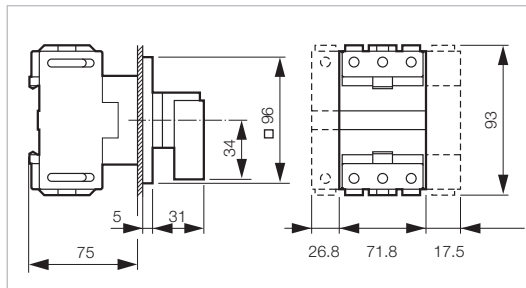
0172502
0172512
0172522
0172532

0174502
0174512
0174522
0174532

STANDARD VERSIONS IP40 RATED.

TO ORDER WITH IP65 GASKETS ADD -1 TO PART NUMBERS ABOVE.

IE. 0172402-1

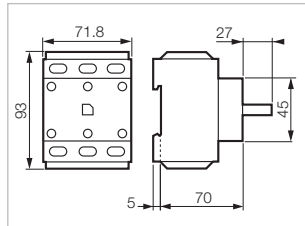


COMPONENTS AND ACCESSORIES

Part Number



0172400



3-pole switch body without handle

80 A
100 A

0172400
0172500

Additional pole

80 A
100 A

0172475
0172575

Neutral pole

80 A
100 A

0172465
0172565

Junction block

Ground or Neutral

0172585

Auxiliary contact

NC/NO

0172179

IP65 Seal Kit

0172277

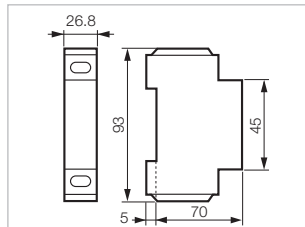
Replacement Handle

96 - Yellow/Red
 96 - Grey

0172622
0174622



0172475



80A / 100A

► DIN-RAIL IN-PANEL MOUNTING



Technical Info (p.192)

PADLOCKABLE PRESENTATION

Grey Handle
Part Number



0174405

80 A

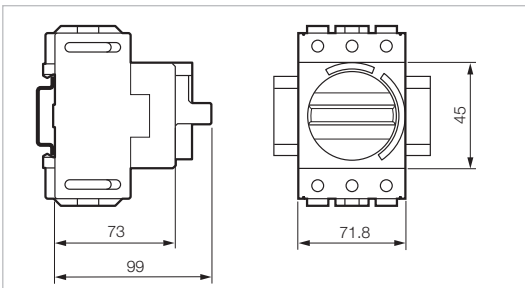
3P
3P + NC/NO
4P neutral on left
4P + NC/NO

0174405
0174415
0174425
0174435

100 A

3P
3P+NC/NO
4P neutral on left
4P + NC/NO

0174505
0174515
0174525
0174535

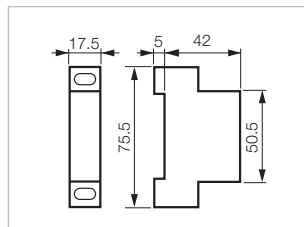


COMPONENTS AND ACCESSORIES

Part Number



0172179



3-pole switch body without handle

80 A
100 A

0172400
0172500

Additional pole

80 A
100 A

0172475
0172575

Neutral pole

80 A
100 A

0172465
0172565

Junction block

Ground or Neutral

0172585

Auxiliary contact

NC/NO

0172179

80A / 100A

▶ DOOR INTERLOCK MOUNTING - NO METAL SHAFT EXTENSION



Technical Info (p.192)

PADLOCKABLE PRESENTATION

Yellow/Red Handle
Part Number

Grey Handle
Part Number



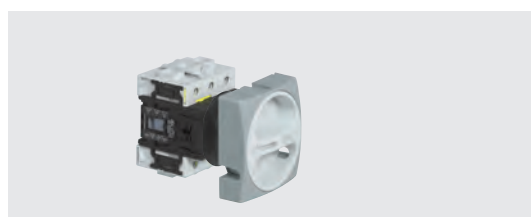
0165409NS

80 A

- 3P
- 3P + NC/NO
- 4P neutral on left
- 4P + NC/NO

- 0165409NS
- 0165419NS
- 0165429NS
- 0165439NS

- 0168409NS
- 0168419NS
- 0168429NS
- 0168439NS



0168509NS

100 A

- 3P
- 3P + NC/NO
- 4P neutral on left
- 4P + NC/NO

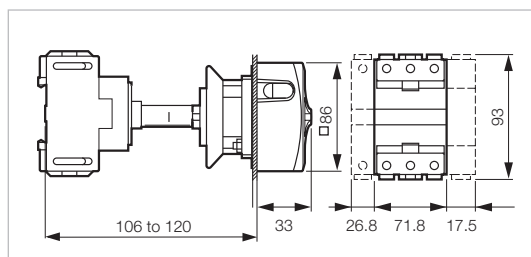
- 0165509NS
- 0165519NS
- 0165529NS
- 0165539NS

- 0168509NS
- 0168519NS
- 0168529NS
- 0168539NS

STANDARD VERSIONS IP40 RATED.

TO ORDER WITH IP65 GASKETS ADD -1 TO PART NUMBERS ABOVE.

IE. 0165409NS-1

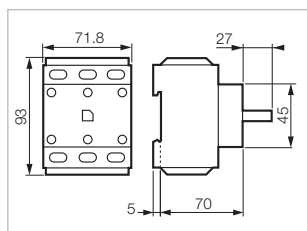


COMPONENTS AND ACCESSORIES

Part Number



0172400



3-pole switch body without handle

- 80 A
- 100 A

- 0172400
- 0172500

Additional pole

- 80 A
- 100 A

- 0172475
- 0172575

Neutral pole

- 80 A
- 100 A

- 0172465
- 0172565

Junction block

Ground or Neutral

0172585

Auxiliary contact

NC/NO

0172179

IP65 Seal Kit

0172269

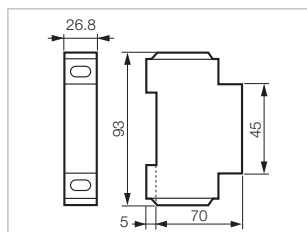
Replacement Handle

- 86 - Yellow/Red
- 86 - Grey

- 0172621
- 0174621



0172475



80A / 100A

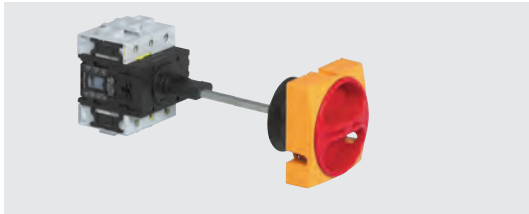
▶ DOOR INTERLOCK MOUNTING - SHORT METAL SHAFT EXTENSION



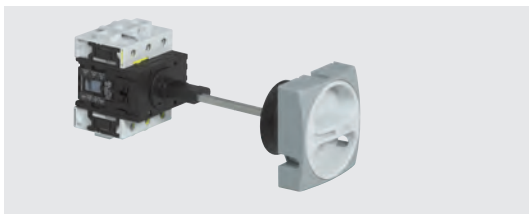
PADLOCKABLE PRESENTATION

Yellow/Red Handle
Part Number

Grey Handle
Part Number



0165409SS



0168509SS

80 A

- 3P
- 3P + NC/NO
- 4P neutral on left
- 4P + NC/NO

- 0165409SS
- 0165419SS
- 0165429SS
- 0165439SS

- 0168409SS
- 0168419SS
- 0168429SS
- 0168439SS

100 A

- 3P
- 3P + NC/NO
- 4P neutral on left
- 4P + NC/NO

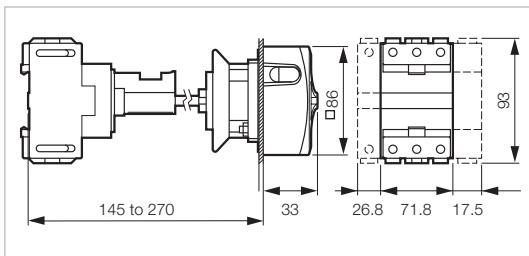
- 0165509SS
- 0165519SS
- 0165529SS
- 0165539SS

- 0168509SS
- 0168519SS
- 0168529SS
- 0168539SS

STANDARD VERSIONS IP40 RATED.

TO ORDER WITH IP65 GASKETS ADD -1 TO PART NUMBERS ABOVE.

IE. 0165409SS-1

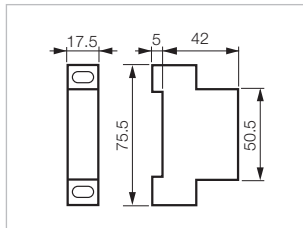


COMPONENTS AND ACCESSORIES

Part Number



0172179



3-pole switch body without handle

- 80 A
- 100 A

- 0172400
- 0172500

Additional pole

- 80 A
- 100 A

- 0172475
- 0172575

Neutral pole

- 80 A
- 100 A

- 0172465
- 0172565

Junction block

Ground or Neutral

0172585

Auxiliary contact

NC/NO

0172179

IP65 Seal Kit

0174269

Replacement Handle

- 86 - Yellow/Red
- 86 - Grey

- 0172621
- 0174621



0174269

80A / 100A

▶ DOOR INTERLOCK MOUNTING - LONG METAL SHAFT EXTENSION

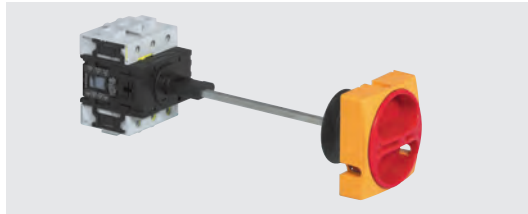


Technical Info (p.192)

PADLOCKABLE PRESENTATION

Yellow/Red Handle
Part Number

Grey Handle
Part Number



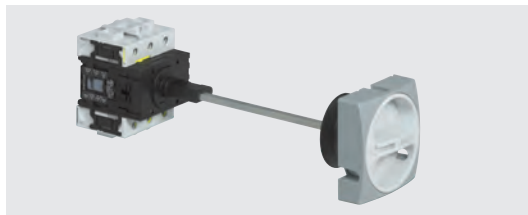
0165409LS

80 A

3P
3P + NC/NO
4P neutral on left
4P + NC/NO

0165409LS
0165419LS
0165429LS
0165439LS

0168409LS
0168419LS
0168429LS
0168439LS



0168509LS

100 A

3P
3P + NC/NO
4P neutral on left
4P + NC/NO

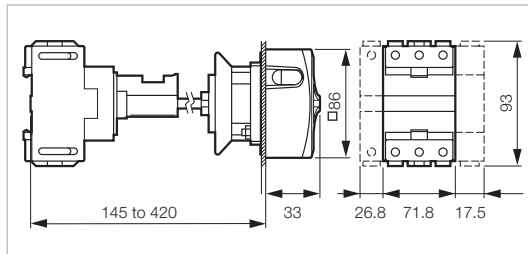
0165509LS
0165519LS
0165529LS
0165539LS

0168509LS
0168519LS
0168529LS
0168539LS

STANDARD VERSIONS IP40 RATED.

TO ORDER WITH IP65 GASKETS ADD -1 TO PART NUMBERS ABOVE.

IE. 0165409LS-1

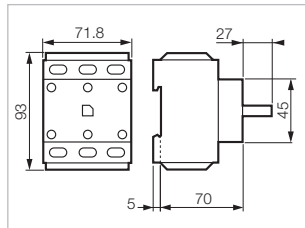


COMPONENTS AND ACCESSORIES

Part Number



0172400



3-pole switch body without handle

80 A
100 A

0172400
0172500

Additional pole

80 A
100 A

0172475
0172575

Neutral pole

80 A
100 A

0172465
0172565

Junction block

Ground or Neutral

0172585

Auxiliary contact

NC/NO

0172179

IP65 Seal Kit

0174269

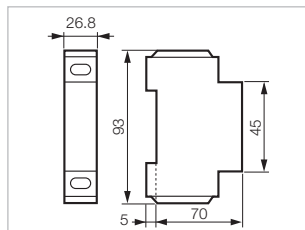
Replacement Handle

86 - Yellow/Red
 86 - Grey

0172621
0174621



0172475



80A / 100A

► ENCLOSURES

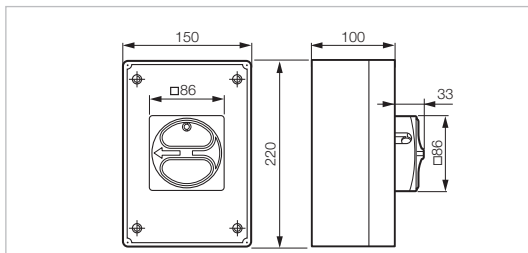


PADLOCKABLE PRESENTATION



0172461

0174561



Cable entries: 4 x PG29

80 A

- 3P
- 3P + NC/NO
- 4P neutral on left
- 4P + NC/NO

Yellow/Red Handle
Part Number

- 0172461
- 0172471
- 0172481
- 0172491

Grey Handle
Part Number

- 0174461
- 0174471
- 0174481
- 0174491

100 A

- 3P
- 3P+NC/NO
- 4P neutral on left
- 4P + NC/NO

- 0172561
- 0172571
- 0172581
- 0172591

- 0174561
- 0174571
- 0174581
- 0174591

STANDARD VERSIONS IP40 RATED.

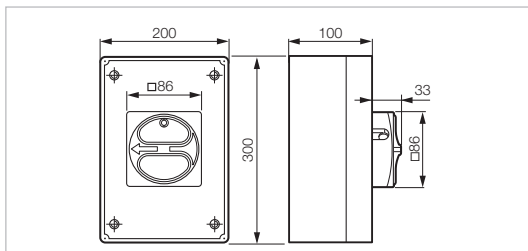
TO ORDER WITH IP65 GASKETS ADD -6 TO PART NUMBERS ABOVE.
IE. 0172461-6

PADLOCKABLE PRESENTATION



0172409

0174509



Cable entries: 4 x PG29 and 4 x PG21

80 A

- 6P
- 6P + NC/NO

Yellow/Red Handle
Part Number

- 0172409
- 0172429

Grey Handle
Part Number

- 0174409
- 0174429

100 A

- 6P
- 6P+NC/NO

- 0172509
- 0172529

- 0174509
- 0174529

STANDARD VERSIONS IP40 RATED.

TO ORDER WITH IP65 GASKETS ADD -6 TO PART NUMBERS ABOVE.
IE. 0172409-6

CABLE GLANDS

Part Number



PG21-GY

- PG21
- PG29

- Cable Range 13mm - 18mm
- Cable Range 18mm - 25mm

- PG21-GY
- PG29-GY

80A / 100A

► ENCLOSURES

 Technical Info (p. 192)

NON- PADLOCKABLE PRESENTATION



0172462

0174562

80 A

3P
3P + NC/NO
4P neutral on left
4P + NC/NO

Yellow/Red Handle
Part Number

0172462
0172472
0172482
0172492

Grey Handle
Part Number

0174462
0174472
0174482
0174492

100 A

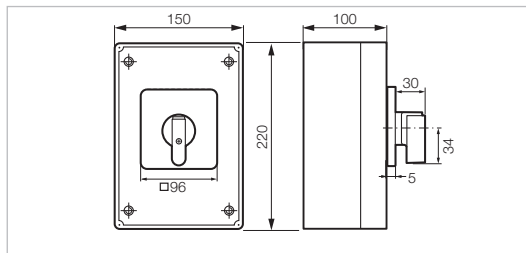
3P
3P+NC/NO
4P neutral on left
4P + NC/NO

0172562
0172572
0172582
0172592

0174562
0174572
0174582
0174592

STANDARD VERSIONS IP40 RATED.

**TO ORDER WITH IP65 GASKETS ADD -6 TO PART NUMBERS ABOVE.
IE. 0172462-6**



Cable entries: 4 x PG29

NON- PADLOCKABLE PRESENTATION



0172419

0174519

80 A

6P
6P + NC/NO

Yellow/Red Handle
Part Number

0172419
0172439

Grey Handle
Part Number

0174419
0174439

100 A

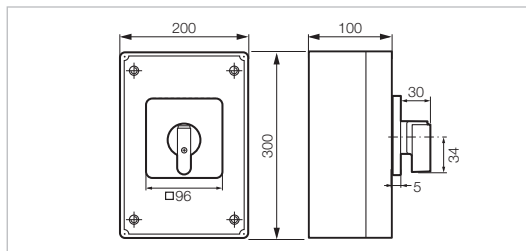
6P
6P+NC/NO

0172519
0172539

0174519
0174539

STANDARD VERSIONS IP40 RATED.

**TO ORDER WITH IP65 GASKETS ADD -6 TO PART NUMBERS ABOVE.
IE. 0172419-6**



Cable entries: 4 x PG29 and 4 x PG21

CABLE GLANDS



PG21-GY

PG21
PG29

Cable Range 13mm - 18mm
Cable Range 18mm - 25mm

Part Number

PG21-GY
PG29-GY

80A / 100A

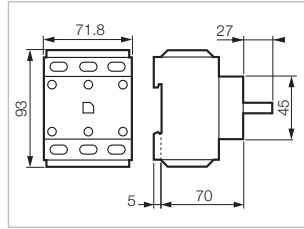
► BLOCKS

 Technical Info (p. 192)

Part Number



0172400



3-pole body switch without presentation

80 A
100 A

0172400
0172500



0172475



0172465

Additional pole
(for use in enclosure only)

80 A
100 A

0172475
0172575

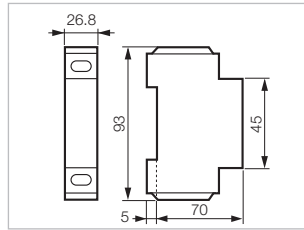
Neutral pole

80 A
100 A

0172465
0172565



0172585

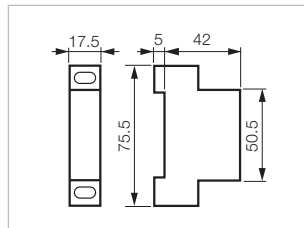


Junction block
Ground or Neutral

0172585



0172179



Auxiliary contact

NC/NO

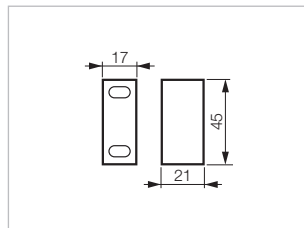
0172179

1 pole early break

0172595



0172595



80A / 100A

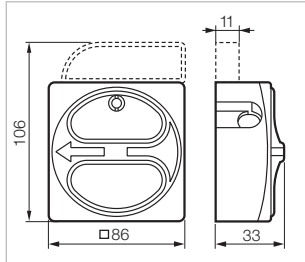
▶ HANDLES

 Technical Info (p. 192)

Part Number



0172621



Padlockable presentation

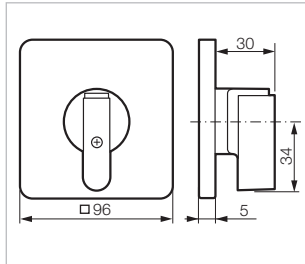
Padlock: \varnothing 6 to 8 mm

- 86 - Yellow/Red
- 86 - Grey

0172621
0174621



0172622



With plate, frame and handle

- 96 - Yellow/Red
- 96 - Grey

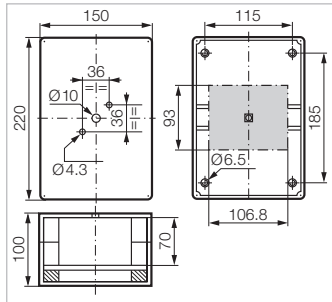
0172622
0174622

▶ EMPTY ENCLOSURES

WITHOUT HANDLE



0172589

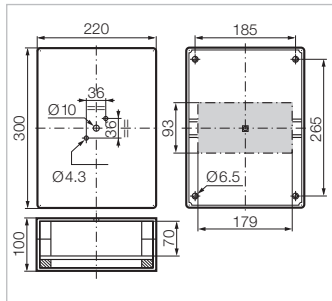


Grey - Up to 3 poles + auxiliary contact
220 x 150 x 100 mm
Cable entries: 4 x PG29

0172589



0172599



Grey - Up to 6 poles + auxiliary contact
300 x 200 x 100 mm
Cable entries: 4 x PG29 and 4 x PG21

0172599

80A / 100A

▶ ACCESSORIES

 Technical Info (p. 192)

Part Number



0172567

Terminal covers

For 3-pole body switch
 For additional pole, neutral pole or junction block
 For NC/NO auxiliary contact (pair)
 For early break auxiliary contact

0172567
0172577
0172189
0172199

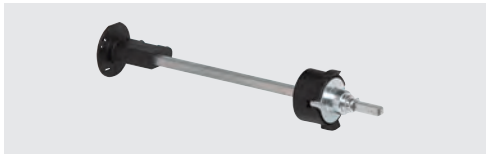


0172649

Duty labels

Blank
 Engraved MAIN SWITCH

0172629
0172649



0174189

Kit for clutch drive presentation

Short shaft without door interlock
 Long shaft without door interlock
 Without shaft and without door interlock

0174189
0174199
0174179

kit for door interlock

0174249



0174179



0174249

IP 65 seal kit

For front mounting switches and enclosures

Padlockable 86 or plate and frame 96

0172277

For rear mounting with clutch drive

Padlockable 86 or plate and frame 96

0174269

Cable Glands

PG21

Cable Range 13mm - 18mm

PG21-GY

PG29

Cable Range 18mm - 25mm

PG29-GY



0172277



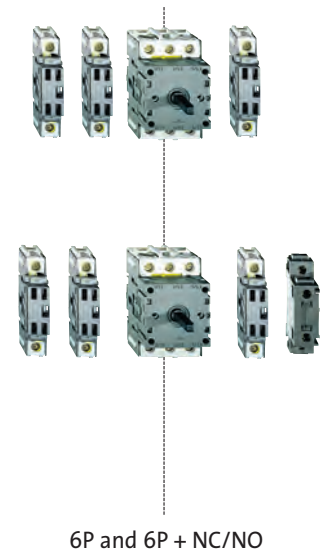
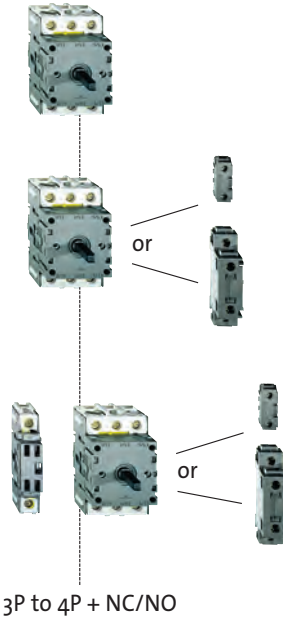
PG21-GY

Enclosure Selection Guide

► 25A / 32A

Enclosure 150 x 100 x 96 mm

Enclosure 220 x 150 x 100 mm

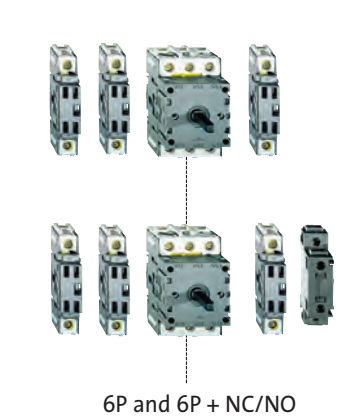
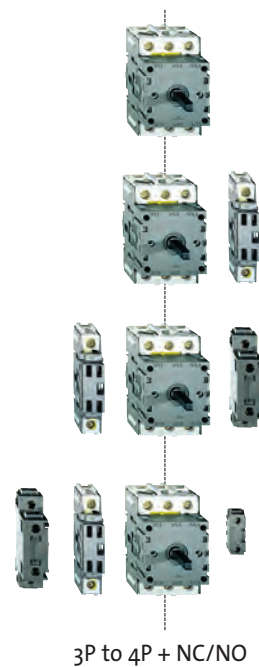


Example: switch disconnecter 32 A
Enclosed 4 poles,
padlockable presentation

► 50A / 63A

Enclosure 220 x 150 x 100mm

Enclosure 220 x 150 x 100 mm



Example: switch disconnecter 50 A
Enclosed 6 poles,
Plate, frame and handle presentation

Enclosure Selection Guide

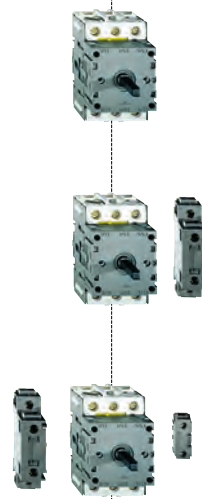
▶ 80A / 100A

Enclosure 220 x 150 x 100 mm

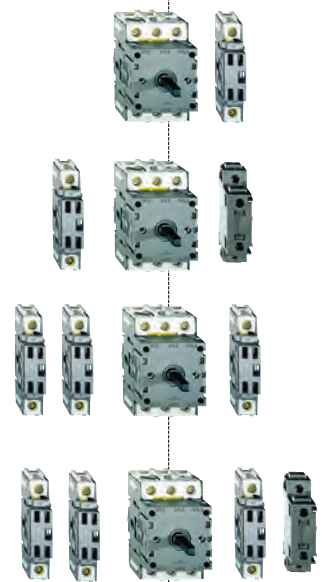
Enclosure 300 x 220 x 100 mm



Example: switch disconnecter 100 A
Enclosed 4 poles,
padlockable presentation



3P and 3P + NC/NO



4P and 6P + NC/NO

LEGEND



basic 3-pole block



additional pole
additional neutral pole
junction block



Auxiliary contact NC/NO



early break auxiliary contact

Technical Specifications

▶ GENERAL

Characteristics	25 A	32 A	50 A	63 A	80 A	100 A
UL/cUL - suitable as motor disconnect						
▶ Rated voltage (V)	600	600	600	600	600	600
▶ General Use Current (A)	25	32	50	63	80	100
▶ Motor Ratings (hp)						
1 x 120 V	0.75	1	1.5	3	3	5
1 x 240 V	1.5	2	3	5	10	10
1 x 277 V	2	3	5	7.5	10	15
3 x 120 V	1.5	2	3	5	7.5	10
3 x 240 V	3	5	7.5	10	20	25
3 x 480 V	7.5	10	15	20	40	50
3 x 600 V	7.5	10	15	20	40	50
▶ Auxiliary Blocks						
NO/NC	A600					
Early Make	B300					
Early Break	B300					
▶ Wire Gauge (AWG)						
3-Pole Body, Additional Pole, Late Break Neutral, Junction Block	8 - 14	8 - 14	4 - 14	4 - 14	1 - 14	1 - 14
Auxiliary Contacts	14 - 18	14 - 18	14 - 18	14 - 18	14 - 18	14 - 18
▶ Short Circuit Rating						
Fuse Type K5 (A)	5000	5000	5000	5000	5000	10000
Fuse Size (A)	40	40	80	80	125	125
Rated break capacity	330	330	800	800	800	800

Technical Specifications

▶ GENERAL

Characteristics	25 A	32 A	50 A	63 A	80 A	100 A
IEC						
▶ Rated insulation voltage U_i (V)	690	690	690	690	690	690
▶ Conventional free air thermal current I_{th} Uninterrupted rated current I_u (A)	25	32	50	63	80	100
▶ Conventional enclosed thermal current I_{the} (A)	20	25	40	50	63	80
▶ Rated impulse withstand voltage (overvoltage category III - pollution degree 3 U_{imp} (kV)	6	6	6	6	6	6
▶ Rated operating current I_e (A) AC - 21 A/22 A Conform to IEC 60947-3	25	32	50	63	80	100
▶ Rated operating power (kW)						
AC 23 A						
3 x 230 V	5.5	5.5	15	15	18.5	22
3 x 400 V	7.5	11	18.5	22	30	37
3 x 500 V	7.5	11	22	30	37	45
3 x 690 V	7.5	11	18.5	22	22	30
AC 3						
3 x 230 V	4	4	7.5	11	15	18.5
3 x 400 V	5.5	7.5	15	18.5	22	30
3 x 500 V	5.5	7.5	15	22	30	37
3 x 690 V	5.5	7.5	15	18.5	18.5	22
▶ Make - break characteristics ($A_{eff}/400$ V)						
Rated make capacity	710	710	1270	1270	1970	1970
Rated break capacity	330	330	800	800	800	800
▶ Short circuit characteristics						
Rated short term withstand current I_{cW} ($A_{eff}/400$ V/1 s)	350	430	500	760	1100	1500
Rated short circuit make capacity I_{cm} (kA peak/400 V)	1	1	1.8	1.8	2.8	2.8
Short circuit current (kA $eff/400$ V)	10	10	10	10	10	10
with fuse gI/gG (A)	25	32	50	63	80	100

Technical Specifications

▶ GENERAL

Characteristics	25 A	32 A	50 A	63 A	80 A	100 A
▶ Mechanical life AC 20 (million)	0.1	0.1	0.04	0.04	0.04	0.04
▶ Connections						
Stranded wire + (min/max) cap (mm ²)	0.75/6	0.75/6	1.5/16	1.5/16	2.5/35	2.5/35
Solid wire (mm ²)	10	10	25	25	50	50
▶ Operating and Storage temperature	-30°C to +70 °C , -22°F to +158°F					
▶ Protection rating	rear of panel: IPxxB front of panel IP 40 in standard version (IP 65 on request)					
▶ Conformity to standards	IEC 60697-3 -EN 60 947-3, UL508, CSA22.2, CB Certificate					
▶ Climatic resistance Tropical atmosphere according to	IEC 60068-2-30 Cyclic damp heat					

▶ AUXILIARY CONTACTS

Characteristics	25 A	32 A	50 A	63 A	80 A	100 A
▶ Rated insulation voltage Ui (V)	400	400	400	400	400	400
▶ Conventional free air thermal current Ith						
Continuous rated current Iu (A)	10	10	10	10	10	10
▶ Rated operating current Ie (A)						
AC 15						
230 V	6	6	6	6	6	6
400 V	4	4	4	4	4	4
▶ PROTECTION AGAINST SHORT CIRCUIT BY FUSE gG (A)	10	10	10	10	10	10
▶ Max. connection stranded wire (mm ²)	2 x 2.5	2 x 2.5	2 x 2.5	2 x 2.5	2 x 2.5	2 x 2.5

Technical Specifications

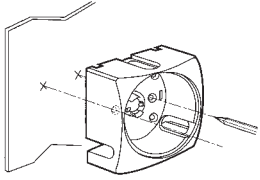
► ENCLOSURES

Characteristics	150x100x96	220x150x100	220x150x100	220x150x100	220x150x100	300x200x100
► Rating	25 and 32 A 3P to 4P +NC/NO	25 and 32 A 6P and 6P +NC/NO	50 and 63 A 3P to 4P +NC/NO	50 and 63 A 6P and 6P +NC/NO	80 and 100 A 3P and 3P +NC/NO	80 and 100 A 4P to 6P +NC/NO
► Cable inputs	2 x 2 PG 16 OR 2 x 2 M25	2 x 2 PG 21	2 x 2 PG 21	2 x 2 PG 29	2 x 2 PG 29	2 x 2 PG 21 2 x 2 PG 29
► Ø knockouts (mm)	PG 16: 22.5 ISO M25: 25	28.5	28.5	37.5	37.5	37.5 and 28.5
► No. of knockouts (top and bottom)	2	2	2	2	2	4
► Panel mount	by 2 screws	by 4 screws	by 4 screws	by 4 screws	by 4 screws	by 4 screws
► Base/cover assembly	by 1 screws self-tapping stainless steel	by 4 screws self-tapping stainless steel	by 4 screws self-tapping stainless steel	by 4 screws self-tapping stainless steel	by 4 screws self-tapping stainless steel	by 6 screws self-tapping stainless steel
► Switch/base assembly	on 35 mm DIN rail (this rail is notched for positioning the switch)					
► Handles mounting	screwing on shaft pre-pierced cover					
► Insulation	Class II installed (provided that the correct insulation plugs are used with the enclosure)					
► Impact withstand	IK07					
► Flameproof	650°C					
► Protection rating	IP 66	IP 40 (IP 65 upon request)				
► Contact operating diagram						
► Switch padlocking	In general: up to 3 padlocks ø 4 to 8 mm Switch with 1 auxiliary contact NC/NO: up to 3 padlocks ø 6 to 8 mm Modular presentation: 1 padlock ø 6 to 8 mm					

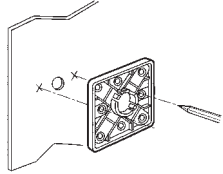
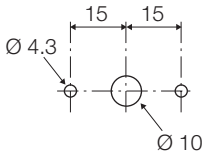
Technical Specifications

► MOUNTING - PANEL DRILLING

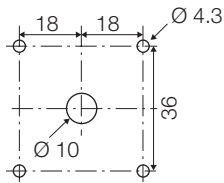
Panel/Door Handle Mounting



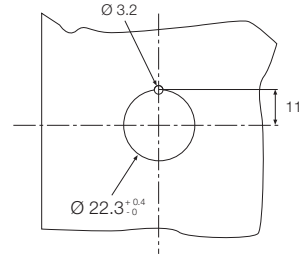
25A/32A



50A/63A/80A/100A

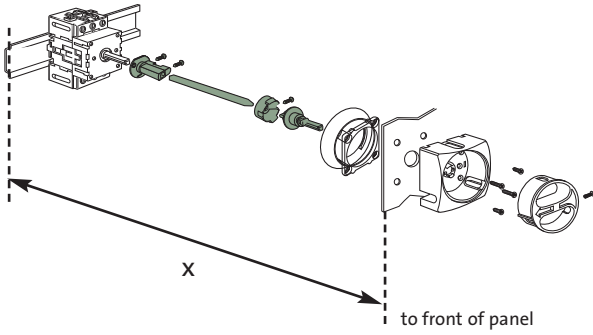


Ø22 Single Hole Mounting

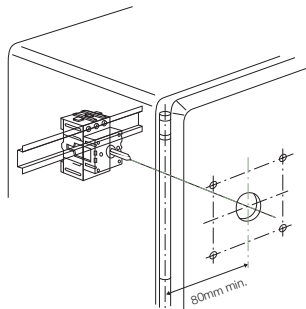
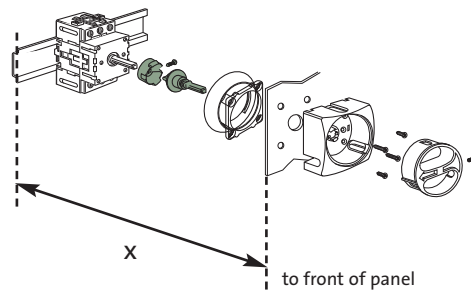


Door Interlock System

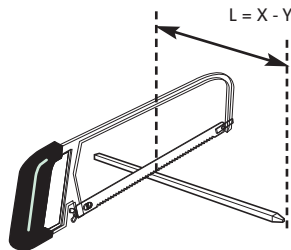
Short or Long Metal Shaft Version



No Metal Shaft Version



Minimum Distance to Hinge



	X			Y
	without shaft	with short shaft	with long shaft	
25A / 32A	86 - 100 mm	125 - 250 mm	125 - 400 mm	92 mm
50A / 63A	96 - 110 mm	135 - 260 mm	135 - 410 mm	102 mm
80A / 100A	106 - 120 mm	145 - 270 mm	145 - 420 mm	112 mm