

# S31 Series



- 1/4" NPT
- Brass Body
- 3-Way Direct Acting
- Diverting



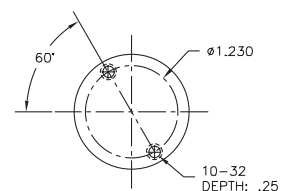
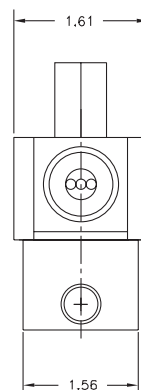
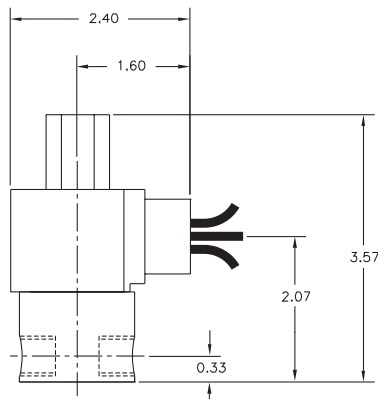
Materials	Seals:	Nitrile, Viton®, Ethylene Propylene or Teflon®
	Orifices:      Top Main	Stainless Steel Stainless Steel
Electrical	Standard Housing:	Encapsulated Waterproof Conduit (NEMA 4/4X)
	Optional Housings:	Metallic Conduit, Explosion-proof (NEMA 7), Grommet, Open Frame, Junction Box (single or dual knockouts), DIN; Contact GC Valves Customer Service for others.
	Standard Voltages:	24, 120, 240 AC 60 Hz; 50 Hz available 6, 12, 24 DC; Contact GC Valves Customer Service for Additional Voltages.
	Voltage Tolerance:	±10% of applicable voltage
	Coil Classes:	F, H, N
	Standard Lead Length:	24 inch
Operating Temperature	Ambient (Nominal):	32°F to 125°F
Mounting	Position	Any
Approvals*	Agency	UL Listed, UL Recognized, CSA Approved

\* Not available for all variations

© Registered Trademark of DuPont Co.

## Dimensions/Weight

<b>Weight (lbs.)</b>
1.2



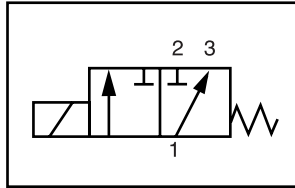
GC Valves Customer Service: 800-828-0484 (7:30am to 4pm ET) or 800-582-4232 (7:30am to 4pm PT)



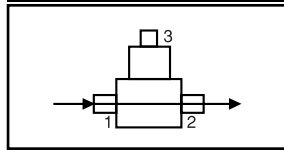
# S315 – 1/4" NPT, Brass Body, Diverting

## Valve Selection List

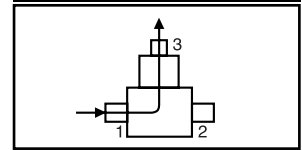
Diverting



Energized



De-Energized



Pipe Size NPT	Orifice Size IN		C <sub>v</sub>		Operating Pressure Differential (psi)						Max Fluid Temp. °F	Seal Material	Power Consumption (Watts)		Model Code ( 120V/60HZ — 110V/50HZ Shown )
	Main	Top	Main	Top	Maximum		Light Oil		AC	DC			AC	DC	
					AC	DC	AC	DC							
															Brass Body
1/4	3/64	3/64	.05	.05	200	200	200	200	—	—	295	EPR	8	9	S315GF02C8BC3
	3/64	1/16	.05	.10	175	175	175	175	—	—	295	EPR	8	9	S315GF02C8BV1
	1/16	1/16	.10	.10	150	150	150	150	—	—	295	EPR	8	9	S315GF02C8BC5
	3/32	3/64	.20	.05	140	140	140	140	—	—	295	EPR	8	9	S315GF02C8BW3
	3/32	3/32	.20	.20	130	130	130	130	—	—	295	EPR	8	9	S315GF02C8BC9
	7/64	3/32	.23	.20	100	100	100	100	—	—	295	EPR	8	9	S315GF02C8BV5
	1/8	3/32	.27	.20	90	90	90	90	—	—	295	EPR	8	9	S315GF02C8BV3
	5/64	3/32	.41	.20	70	70	70	70	—	—	295	EPR	8	9	S315GF02C8BV7
1/4	3/64	3/64	.05	.05	200	200	200	200	200	200	180	Nitrile	8	9	S315GF02N8BC3
	3/64	1/16	.05	.10	175	175	175	175	175	175	180	Nitrile	8	9	S315GF02N8BV1
	1/16	1/16	.10	.10	150	150	150	150	150	150	180	Nitrile	8	9	S315GF02N8BC5
	3/32	3/64	.20	.05	140	140	140	140	140	140	180	Nitrile	8	9	S315GF02N8BW3
	3/32	3/32	.20	.20	130	130	130	130	130	130	180	Nitrile	8	9	S315GF02N8BC9
	7/64	3/32	.23	.20	100	100	100	100	100	100	180	Nitrile	8	9	S315GF02N8BV5
	1/8	3/32	.27	.20	90	90	90	90	90	90	180	Nitrile	8	9	S315GF02N8BV3
	5/64	3/32	.41	.20	70	70	70	70	70	70	180	Nitrile	8	9	S315GF02N8BV7
1/4	3/64	3/64	.05	.05	200	200	200	200	200	200	230	Viton	8	9	S315GF02V8BC3
	3/64	1/16	.05	.10	175	175	175	175	175	175	230	Viton	8	9	S315GF02V8BV1
	1/16	1/16	.10	.10	150	150	150	150	150	150	230	Viton	8	9	S315GF02V8BC5
	3/32	3/64	.20	.05	140	140	140	140	140	140	230	Viton	8	9	S315GF02V8BW3
	3/32	3/32	.20	.20	130	130	130	130	130	130	230	Viton	8	9	S315GF02V8BC9
	7/64	3/32	.23	.20	100	100	100	100	100	100	230	Viton	8	9	S315GF02V8BV5
	1/8	3/32	.27	.20	90	90	90	90	90	90	230	Viton	8	9	S315GF02V8BV3
	5/64	3/32	.41	.20	70	70	70	70	70	70	230	Viton	8	9	S315GF02V8BV7

\* Class H Coil Recommended for High Temperature Applications

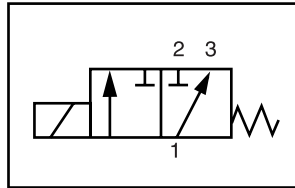
GC Valves Customer Service: 800-828-0484 (7:30am to 4pm ET) or 800-582-4232 (7:30am to 4pm PT)

# S315 – 1/4" NPT, Brass Body, Diverting

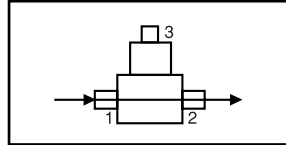


## Valve Selection List

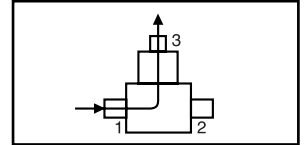
Diverting



Energized



De-Energized



Pipe Size NPT	Orifice Size IN		C <sub>v</sub>		Operating Pressure Differential (psi)						Max Fluid Temp. °F	Seal Material	Power Consumption (Watts)		Model Code ( 120V/60HZ — 110V/50HZ Shown )
	Main	Top	Main	Top	Maximum			Light Oil		AC			DC		
					Air/Gas		Water		AC					DC	
	AC	DC	AC	DC	AC	DC	AC	DC	AC	DC			Brass Body		
1/4	3/64	3/64	.05	.05	200	200	200	200	200	200	366*	Teflon	8	9	S315GF02T8BC3
	3/64	1/16	.05	.10	175	175	175	175	175	175	366*	Teflon	8	9	S315GF02T8BV1
	1/16	1/16	.10	.10	150	150	150	150	150	150	366*	Teflon	8	9	S315GF02T8BC5
	3/32	3/64	.20	.05	140	140	140	140	140	140	366*	Teflon	8	9	S315GF02T8BW3
	3/32	3/32	.20	.20	130	130	130	130	130	130	366*	Teflon	8	9	S315GF02T8BC9
	7/64	3/32	.23	.20	100	100	100	100	100	100	366*	Teflon	8	9	S315GF02T8BV5
	1/8	3/32	.27	.20	90	90	90	90	90	90	366*	Teflon	8	9	S315GF02T8BV3
	5/64	3/32	.41	.20	70	70	70	70	70	70	366*	Teflon	8	9	S315GF02T8BV7

\* Class H Coil Recommended for High Temperature Applications



# S315 – 1/4" NPT, Brass Body, Diverting

## Part Numbering

1	2	3	4	5	6	7	8	9	10	11	12	13
<b>S</b>	<b>3</b>	<b>1</b>	<b>5</b>	<b>G</b>	<b>F</b>	<b>0</b>	<b>2</b>	<b>C</b>	<b>8</b>	<b>B</b>	<b>C</b>	<b>3</b>
Series			Operating Mode	Housing*	Coil Class*	Voltage*		Seal Material	Body Material	Pipe Connection	Orifice Size (Main x Top)	
S31			5: Diverting	G: Conduit	F: Class F	02: 120/60 110/50		C: EPR N: Nitrile V: Viton T: Teflon	8: Brass	B: 1/4" NPT	C3: 3/64" x 3/64" V1: 3/64" x 1/16" C5: 1/16" x 1/16" W3: 3/32" x 3/64" C9: 3/32" x 3/32" V5: 7/64" x 3/32" V3: 1/8" x 3/32" V7: 5/64" x 3/32"	
* See the "Engineering Guide" for additional voltages, variations and options.												

## Coil Data

Coil Family	
Type	Size
All	S3

Frequency (Hz)	60	50	
Nominal Power (VA)	Inrush	36	36
	Holding	16	17

GC Valves Customer Service: 800-828-0484 (7:30am to 4pm ET) or 800-582-4232 (7:30am to 4pm PT)

# S30 Series



- 1/4" NPT
- Brass Body
- 3-Way Direct Acting
- Diverting



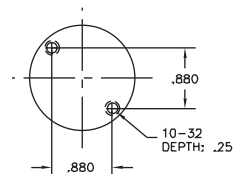
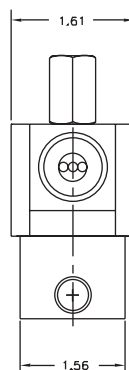
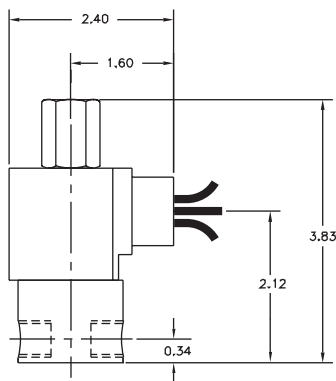
Materials	Seals:	Nitrile, Viton®, Ethylene Propylene or Teflon®
	Orifices:      Top Main	Stainless Steel Stainless Steel
Electrical	Standard Housing:	Encapsulated Waterproof Conduit (NEMA 4/4X)
	Optional Housings:	Metallic Conduit, Explosion-proof (NEMA 7), Grommet, Open Frame, Junction Box (single or dual knockouts), DIN; Contact GC Valves Customer Service for others.
	Standard Voltages:	24, 120, 240 AC 60 Hz; 50 Hz available 6, 12, 24 DC; Contact GC Valves Customer Service for Additional Voltages.
	Voltage Tolerance:	±10% of applicable voltage
	Coil Classes:	F, H, N
	Standard Lead Length:	24 inch
Operating Temperature	Ambient (Nominal):	32° to 125°F
Mounting	Position	Any
Approvals*	Agency	UL Listed, UL Recognized, CSA Approved

\* Not available for all variations

© Registered Trademark of DuPont Co.

## Dimensions/Weight

**Weight (lbs.)**  
1.2



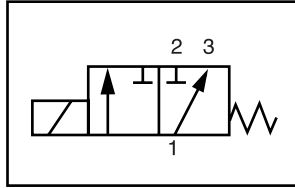
GC Valves Customer Service: 800-828-0484 (7:30am to 4pm ET) or 800-582-4232 (7:30am to 4pm PT)



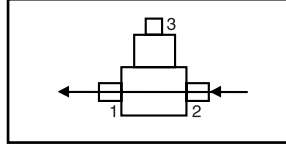
# S305 – 1/4" NPT, Brass Body, Diverting

## Valve Selection List

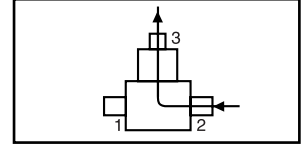
Diverting



Energized



De-Energized



Pipe Size NPT	Orifice Size IN		C <sub>v</sub>		Operating Pressure Differential (psi)						Max Fluid Temp. °F	Seal Material	Power Consumption (Watts)		Model Code ( 120V/60HZ — 110V/50HZ Shown )
	Main	Top	Main	Top	Maximum								AC	DC	
					Air/Gas		Water		Light Oil						
	AC	DC	AC	DC	AC	DC	AC	DC	AC	DC			Brass Body		
1/4	3/64	1/16	.05	.10	220	220	220	220	—	—	295	EPR	10	10	S305GF02C8BV1
	1/16	1/16	.08	.10	180	180	180	180	—	—	295	EPR	10	10	S305GF02C8BC5
	3/32	3/32	.18	.23	125	125	125	125	—	—	295	EPR	10	10	S305GF02C8BC9
	1/8	3/32	.30	.23	100	100	100	100	—	—	295	EPR	10	10	S305GF02C8BV3
	5/32	3/32	.41	.23	75	75	75	75	—	—	295	EPR	10	10	S305GF02C8BV7
	3/16	3/32	.53	.23	60	60	60	60	—	—	295	EPR	10	10	S305GF02C8BV9
	1/4	3/32	.83	.23	20	20	20	20	—	—	295	EPR	10	10	S305GF02C8BW1
1/4	3/64	1/16	.05	.10	220	220	220	220	220	220	180	Nitrile	10	10	S305GF02N8BV1
	1/16	1/16	.08	.10	180	180	180	180	180	180	180	Nitrile	10	10	S305GF02N8BC5
	3/32	3/32	.18	.23	125	125	125	125	125	125	180	Nitrile	10	10	S305GF02N8BC9
	1/8	3/32	.30	.23	100	100	100	100	100	100	180	Nitrile	10	10	S305GF02N8BV3
	5/32	3/32	.41	.23	75	75	75	75	75	75	180	Nitrile	10	10	S305GF02N8BV7
	3/16	3/32	.53	.23	60	60	60	60	60	60	180	Nitrile	10	10	S305GF02N8BV9
	1/4	3/32	.83	.23	20	20	20	20	20	20	180	Nitrile	10	10	S305GF02N8BW1
1/4	3/64	1/16	.05	.10	220	220	220	220	220	220	230	Viton	10	10	S305GF02V8BV1
	1/16	1/16	.08	.10	180	180	180	180	180	180	230	Viton	10	10	S305GF02V8BC5
	3/32	3/32	.18	.23	125	125	125	125	125	125	230	Viton	10	10	S305GF02V8BC9
	1/8	3/32	.30	.23	100	100	100	100	100	100	230	Viton	10	10	S305GF02V8BV3
	5/32	3/32	.41	.23	75	75	75	75	75	75	230	Viton	10	10	S305GF02V8BV7
	3/16	3/32	.53	.23	60	60	60	60	60	60	230	Viton	10	10	S305GF02V8BV9
	1/4	3/32	.83	.23	20	20	20	20	20	20	230	Viton	10	10	S305GF02V8BW1
1/4	3/64	1/16	.05	.10	220	220	220	220	220	220	366*	Teflon	10	10	S305GF02T8BV1
	1/16	1/16	.08	.10	180	180	180	180	180	180	366*	Teflon	10	10	S305GF02T8BC5
	3/32	3/32	.18	.23	125	125	125	125	125	125	366*	Teflon	10	10	S305GF02T8BC9
	1/8	3/32	.30	.23	100	100	100	100	100	100	366*	Teflon	10	10	S305GF02T8BV3
	5/32	3/32	.41	.23	75	75	75	75	75	75	366*	Teflon	10	10	S305GF02T8BV7
	3/16	3/32	.53	.23	60	60	60	60	60	60	366*	Teflon	10	10	S305GF02T8BV9
	1/4	3/32	.83	.23	15	15	15	15	15	15	366*	Teflon	10	10	S305GF02T8BW1

\* Class H Coil Recommended for High Temperature Applications

GC Valves Customer Service: 800-828-0484 (7:30am to 4pm ET) or 800-582-4232 (7:30am to 4pm PT)

# S305 – 1/4" NPT, Brass Body, Diverting



## Part Numbering

1	2	3	4	5	6	7	8	9	10	11	12	13
<b>S</b>	<b>3</b>	<b>0</b>	<b>5</b>	<b>G</b>	<b>F</b>	<b>0</b>	<b>2</b>	<b>C</b>	<b>8</b>	<b>B</b>	<b>V</b>	<b>1</b>
Series			Operating Mode	Housing*	Coil Class*	Voltage*		Seal Material	Body Material	Pipe Connection	Orifice Size (Main x Top)	
S30			5: Diverting	G: Conduit	F: Class F	02: 120/60 110/50		C: EPR N: Nitrile V: Viton T: Teflon	8: Brass	B: 1/4" NPT	V1: 3/64" x 1/16" C5: 1/16" x 1/16" C9: 3/32" x 3/32" V3: 1/8" x 3/32" V7: 5/32" x 3/32" V9: 3/16" x 3/32" W1: 1/4" x 3/32"	
* See the "Engineering Guide" for additional voltages, variations and options.												

## Coil Data

Coil Family	
Type	Size
All	S4

Frequency (Hz)	60	50
Nominal Power (VA)	Inrush	46
	Holding	20

# S31 Series



- 1/4" NPT
- Stainless Steel Body
- 3-Way Direct Acting
- Diverting



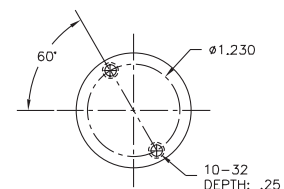
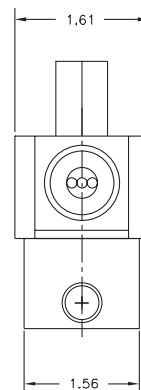
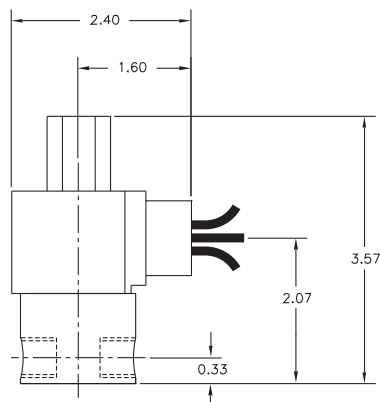
Materials	Seals:	Nitrile, Viton®, Ethylene Propylene or Teflon®
	Orifices:      Top Main	Stainless Steel Stainless Steel
Electrical	Standard Housing:	Encapsulated Waterproof Conduit (NEMA 4/4X)
	Optional Housings:	Metallic Conduit, Explosion-proof (NEMA 7), Grommet, Open Frame, Junction Box (single or dual knockouts), DIN; Contact GC Valves Customer Service for others.
	Standard Voltages:	24, 120, 240 AC 60 Hz; 50 Hz available 6, 12, 24 DC; Contact GC Valves Customer Service for Additional Voltages.
	Voltage Tolerance:	±10% of applicable voltage
	Coil Classes:	F, H, N
	Standard Lead Length:	24 inch
Operating Temperature	Ambient (Nominal):	32°F to 125°F
Mounting	Position	Any
Approvals*	Agency	UL Listed, UL Recognized, CSA Approved

\* Not available for all variations

© Registered Trademark of DuPont Co.

## Dimensions/Weight

<b>Weight (lbs.)</b>
1.2



GC Valves Customer Service: 800-828-0484 (7:30am to 4pm ET) or 800-582-4232 (7:30am to 4pm PT)

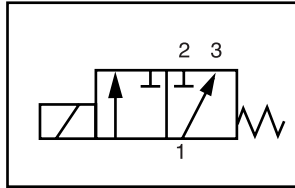




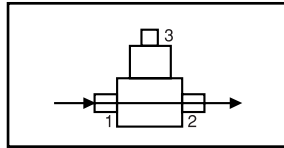
# S315 – 1/4" NPT, Stainless Steel Body, Diverting

## Valve Selection List

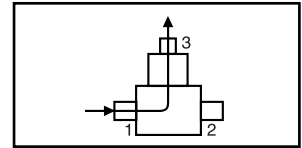
Diverting



Energized



De-Energized



Pipe Size NPT	Orifice Size IN		C <sub>v</sub>		Operating Pressure Differential (psi)						Max Fluid Temp. °F	Seal Material	Power Consumption (Watts)		Model Code ( 120V/60HZ — 110V/50HZ Shown )
	Main	Top	Main	Top	Maximum								AC	DC	
					Air/Gas		Water		Light Oil						
	AC	DC	AC	DC	AC	DC	AC	DC	AC	DC			Stainless Steel Body		
1/4	3/64	3/64	.05	.05	200	200	200	200	—	—	295	EPR	8	9	S315GF02C3BC3
	3/64	1/16	.05	.10	175	175	175	175	—	—	295	EPR	8	9	S315GF02C3BV1
	1/16	1/16	.10	.10	150	150	150	150	—	—	295	EPR	8	9	S315GF02C3BC5
	3/32	3/64	.20	.05	140	140	140	140	—	—	295	EPR	8	9	S315GF02C3BW3
	3/32	3/32	.20	.20	130	130	130	130	—	—	295	EPR	8	9	S315GF02C3BC9
	7/64	3/32	.23	.20	100	100	100	100	—	—	295	EPR	8	9	S315GF02C3BV5
	1/8	3/32	.27	.20	90	90	90	90	—	—	295	EPR	8	9	S315GF02C3BV3
	5/64	3/32	.41	.20	70	70	70	70	—	—	295	EPR	8	9	S315GF02C3BV7
1/4	3/64	3/64	.05	.05	200	200	200	200	200	200	180	Nitrile	8	9	S315GF02N3BC3
	3/64	1/16	.05	.10	175	175	175	175	175	175	180	Nitrile	8	9	S315GF02N3BV1
	1/16	1/16	.10	.10	150	150	150	150	150	150	180	Nitrile	8	9	S315GF02N3BC5
	3/32	3/64	.20	.05	140	140	140	140	140	140	180	Nitrile	8	9	S315GF02N3BW3
	3/32	3/32	.20	.20	130	130	130	130	130	130	180	Nitrile	8	9	S315GF02N3BC9
	7/64	3/32	.23	.20	100	100	100	100	100	100	180	Nitrile	8	9	S315GF02N3BV5
	1/8	3/32	.27	.20	90	90	90	90	90	90	180	Nitrile	8	9	S315GF02N3BV3
	5/64	3/32	.41	.20	70	70	70	70	70	70	180	Nitrile	8	9	S315GF02N3BV7
1/4	3/64	3/64	.05	.05	200	200	200	200	200	200	230	Viton	8	9	S315GF02V3BC3
	3/64	1/16	.05	.10	175	175	175	175	175	175	230	Viton	8	9	S315GF02V3BV1
	1/16	1/16	.10	.10	150	150	150	150	150	150	230	Viton	8	9	S315GF02V3BC5
	3/32	3/64	.20	.05	140	140	140	140	140	140	230	Viton	8	9	S315GF02V3BW3
	3/32	3/32	.20	.20	130	130	130	130	130	130	230	Viton	8	9	S315GF02V3BC9
	7/64	3/32	.23	.20	100	100	100	100	100	100	230	Viton	8	9	S315GF02V3BV5
	1/8	3/32	.27	.20	90	90	90	90	90	90	230	Viton	8	9	S315GF02V3BV3
	5/64	3/32	.41	.20	70	70	70	70	70	70	230	Viton	8	9	S315GF02V3BV7

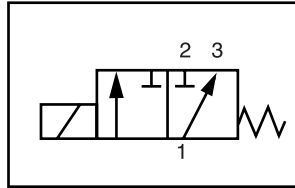
GC Valves Customer Service: 800-828-0484 (7:30am to 4pm ET) or 800-582-4232 (7:30am to 4pm PT)

# S315 – 1/4" NPT, Stainless Steel Body, Diverting

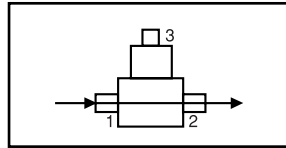


## Valve Selection List

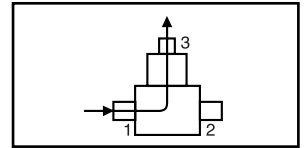
Diverting



Energized



De-Energized



Pipe Size NPT	Orifice Size IN		C <sub>v</sub>		Operating Pressure Differential (psi)						Max Fluid Temp. °F	Seal Material	Power Consumption (Watts)		Model Code ( 120V/60HZ — 110V/50HZ Shown )
	Main	Top	Main	Top	Maximum								AC	DC	
					Air/Gas		Water		Light Oil						
	AC	DC	AC	DC	AC	DC	AC	DC	AC	DC			Stainless Steel Body		
1/4	3/64	3/64	.05	.05	200	200	200	200	200	200	366*	Teflon	8	9	S315GF02T3BC3
	3/64	1/16	.05	.10	175	175	175	175	175	175	366*	Teflon	8	9	S315GF02T3BV1
	1/16	1/16	.10	.10	150	150	150	150	150	150	366*	Teflon	8	9	S315GF02T3BC5
	3/32	3/64	.20	.05	140	140	140	140	140	140	366*	Teflon	8	9	S315GF02T3BW3
	3/32	3/32	.20	.20	130	130	130	130	130	130	366*	Teflon	8	9	S315GF02T3BC9
	7/64	3/32	.23	.20	100	100	100	100	100	100	366*	Teflon	8	9	S315GF02T3BV5
	1/8	3/32	.27	.20	90	90	90	90	90	90	366*	Teflon	8	9	S315GF02T3BV3
	5/64	3/32	.41	.20	70	70	70	70	70	70	366*	Teflon	8	9	S315GF02T3BV7

\* Class H Coil Recommended for High Temperature Applications



# S315 – 1/4" NPT, Stainless Steel Body, Diverting

## Part Numbering

1	2	3	4	5	6	7	8	9	10	11	12	13
<b>S</b>	<b>3</b>	<b>1</b>	<b>5</b>	<b>G</b>	<b>F</b>	<b>0</b>	<b>2</b>	<b>C</b>	<b>3</b>	<b>B</b>	<b>C</b>	<b>3</b>
Series			Operating Mode	Housing*	Coil Class*	Voltage*		Seal Material	Body Material	Pipe Connection	Orifice Size (Main x Top)	
S31			5: Diverting	G: Conduit	F: Class F	02: 120/60 110/50		C: EPR N: Nitrile V: Viton T: Teflon	3: Stainless Steel	B: 1/4" NPT	C3: 3/64" x 3/64" V1: 3/64" x 1/16" C5: 1/16" x 1/16" W3: 3/32" x 3/64" C9: 3/32" x 3/32" V5: 7/64" x 3/32" V3: 1/8" x 3/32" V7: 5/64" x 3/32"	
* See the "Engineering Guide" for additional voltages, variations and options.												

## Coil Data

Coil Family	
Type	Size
All	S3

Frequency (Hz)	60	50	
Nominal Power (VA)	Inrush	36	36
	Holding	16	17

GC Valves Customer Service: 800-828-0484 (7:30am to 4pm ET) or 800-582-4232 (7:30am to 4pm PT)

# S30 Series



- 1/4" NPT
- Stainless Steel Body
- 3-Way Direct Acting
- Diverting



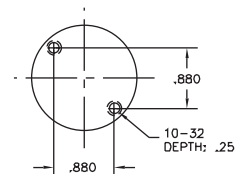
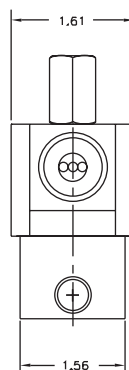
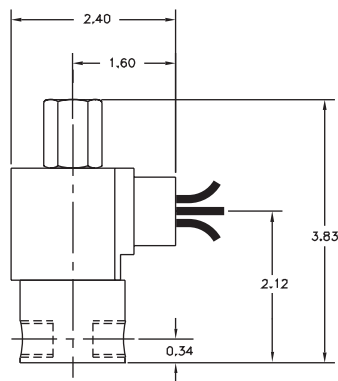
Materials	Seals:	Nitrile, Viton®, Ethylene Propylene or Teflon®
	Orifices:      Top Main	Stainless Steel Stainless Steel
Electrical	Standard Housing:	Encapsulated Waterproof Conduit (NEMA 4/4X)
	Optional Housings:	Metallic Conduit, Explosion-proof (NEMA 7), Grommet, Open Frame, Junction Box (single or dual knockouts), DIN; Contact GC Valves Customer Service for others.
	Standard Voltages:	24, 120, 240 AC 60 Hz; 50 Hz available 6, 12, 24 DC; Contact GC Valves Customer Service for Additional Voltages.
	Voltage Tolerance:	±10% of applicable voltage
	Coil Classes:	F, H, N
	Standard Lead Length:	24 inch
Operating Temperature	Ambient (Nominal):	32° to 125°F
Mounting	Position	Any
Approvals*	Agency	UL Listed, UL Recognized, CSA Approved

\* Not available for all variations

© Registered Trademark of DuPont Co.

## Dimensions/Weight

**Weight (lbs.)**  
1.2



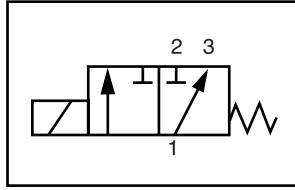
GC Valves Customer Service: 800-828-0484 (7:30am to 4pm ET) or 800-582-4232 (7:30am to 4pm PT)



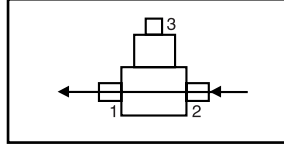
# S305 – 1/4" NPT, Stainless Steel Body, Diverting

## Valve Selection List

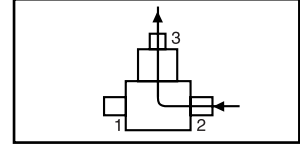
Diverting



Energized



De-Energized



Pipe Size NPT	Orifice Size IN		C <sub>v</sub>		Operating Pressure Differential (psi)						Max Fluid Temp. °F	Seal Material	Power Consumption (Watts)		Model Code ( 120V/60HZ — 110V/50HZ Shown )
	Main	Top	Main	Top	Maximum					AC			DC		
					Air/Gas		Water		Light Oil						
	AC	DC	AC	DC	AC	DC	AC	DC	AC	DC			Stainless Steel Body		
1/4	3/64	1/16	.05	.10	220	220	220	220	—	—	295	EPR	10	10	S305GF02C3BV1
	1/16	1/16	.08	.10	180	180	180	180	—	—	295	EPR	10	10	S305GF02C3BC5
	3/32	3/32	.18	.23	125	125	125	125	—	—	295	EPR	10	10	S305GF02C3BC9
	1/8	3/32	.30	.23	100	100	100	100	—	—	295	EPR	10	10	S305GF02C3BV3
	5/32	3/32	.41	.23	75	75	75	75	—	—	295	EPR	10	10	S305GF02C3BV7
	3/16	3/32	.53	.23	60	60	60	60	—	—	295	EPR	10	10	S305GF02C3BV9
	1/4	3/32	.83	.23	20	20	20	20	—	—	295	EPR	10	10	S305GF02C3BW1
1/4	3/64	1/16	.05	.10	220	220	220	220	220	220	180	Nitrile	10	10	S305GF02N3BV1
	1/16	1/16	.08	.10	180	180	180	180	180	180	180	Nitrile	10	10	S305GF02N3BC5
	3/32	3/32	.18	.23	125	125	125	125	125	125	180	Nitrile	10	10	S305GF02N3BC9
	1/8	3/32	.30	.23	100	100	100	100	100	100	180	Nitrile	10	10	S305GF02N3BV3
	5/32	3/32	.41	.23	75	75	75	75	75	75	180	Nitrile	10	10	S305GF02N3BV7
	3/16	3/32	.53	.23	60	60	60	60	60	60	180	Nitrile	10	10	S305GF02N3BV9
	1/4	3/32	.83	.23	20	20	20	20	20	20	180	Nitrile	10	10	S305GF02N3BW1
1/4	3/64	1/16	.05	.10	220	220	220	220	220	220	230	Viton	10	10	S305GF02V3BV1
	1/16	1/16	.08	.10	180	180	180	180	180	180	230	Viton	10	10	S305GF02V3BC5
	3/32	3/32	.18	.23	125	125	125	125	125	125	230	Viton	10	10	S305GF02V3BC9
	1/8	3/32	.30	.23	100	100	100	100	100	100	230	Viton	10	10	S305GF02V3BV3
	5/32	3/32	.41	.23	75	75	75	75	75	75	230	Viton	10	10	S305GF02V3BV7
	3/16	3/32	.53	.23	60	60	60	60	60	60	230	Viton	10	10	S305GF02V3BV9
	1/4	3/32	.83	.23	20	20	20	20	20	20	230	Viton	10	10	S305GF02V3BW1
1/4	3/64	1/16	.05	.10	220	220	220	220	220	220	366*	Teflon	10	10	S305GF02T3BV1
	1/16	1/16	.08	.10	180	180	180	180	180	180	366*	Teflon	10	10	S305GF02T3BC5
	3/32	3/32	.18	.23	125	125	125	125	125	125	366*	Teflon	10	10	S305GF02T3BC9
	1/8	3/32	.30	.23	100	100	100	100	100	100	366*	Teflon	10	10	S305GF02T3BV3
	5/32	3/32	.41	.23	75	75	75	75	75	75	366*	Teflon	10	10	S305GF02T3BV7
	3/16	3/32	.53	.23	60	60	60	60	60	60	366*	Teflon	10	10	S305GF02T3BV9
	1/4	3/32	.83	.23	20	20	20	20	20	20	366*	Teflon	10	10	S305GF02T3BW1

\* Class H Coil Recommended for High Temperature Applications

GC Valves Customer Service: 800-828-0484 (7:30am to 4pm ET) or 800-582-4232 (7:30am to 4pm PT)

# S305 – 1/4" NPT, Stainless Steel Body, Diverting



## Part Numbering

1	2	3	4	5	6	7	8	9	10	11	12	13
<b>S</b>	<b>3</b>	<b>0</b>	<b>5</b>	<b>G</b>	<b>F</b>	<b>0</b>	<b>2</b>	<b>C</b>	<b>3</b>	<b>B</b>	<b>V</b>	<b>1</b>
Series			Operating Mode	Housing*	Coil Class*	Voltage*		Seal Material	Body Material	Pipe Connection	Orifice Size (Main x Top)	
S30			5: Diverting	G: Conduit	F: Class F	02: 120/60 110/50		C: EPR N: Nitrile V: Viton T: Teflon	3: Stainless Steel	B: 1/4" NPT	V1: 3/64" x 1/16" C5: 1/16" x 1/16" C9: 3/32" x 3/32" V3: 1/8" x 3/32" V7: 5/32" x 3/32" V9: 3/16" x 3/32" W1: 1/4" x 3/32"	
* See the "Engineering Guide" for additional voltages, variations and options.												

## Coil Data

Coil Family	
Type	Size
All	S4

Frequency (Hz)	60	50
Nominal Power (VA)	Inrush	46
	Holding	20