

## 1/4" NPT Brass Body 2-Way Direct Acting Normally Open



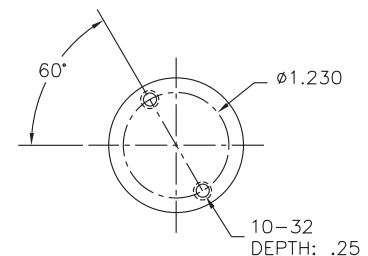
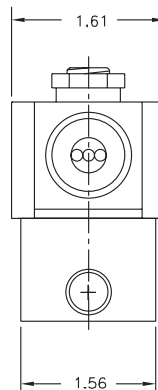
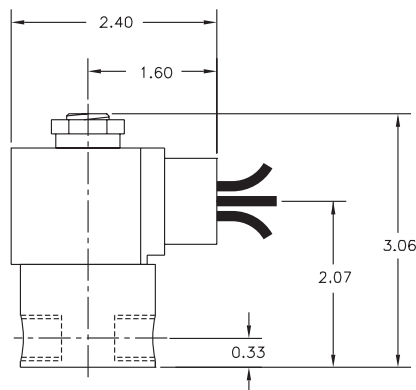
Materials	Seals:	Nitrile, Viton®, Ethylene Propylene, Teflon®, Rulon
	Orifice:	Stainless Steel
Electrical	Standard Housing:	Encapsulated Waterproof Conduit (NEMA 4/4X)
	Optional Housings:	Metallic Conduit, Explosion-proof (NEMA 7), Grommet, Open Frame, Junction Box (single or dual knockouts), DIN; Contact GC Valves Customer Service for others.
	Standard Voltages:	24, 120, 240 AC 60 Hz; 50 Hz available 6, 12, 24 DC; Contact GC Valves Customer Service for Additional Voltages.
	Voltage Tolerance:	±10% of applicable voltage
	Coil Classes:	F, H, N
	Standard Lead Length:	24 inch
Operating Temperature	Ambient (Nominal):	32°F to 125°F
Mounting	Position:	Any
Approvals*	Agency:	UL Listed, UL Recognized, CSA Approved

\* Not available for all variations

© Registered Trademark of DuPont Co.

### Dimensions/Weight

**Weight (lbs.)**  
0.9



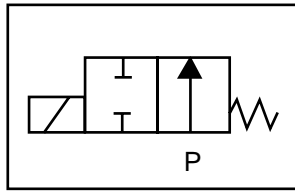
GC Valves Customer Service: 800-828-0484 (7:30am to 4pm ET) or 800-582-4232 (7:30am to 4pm PT)



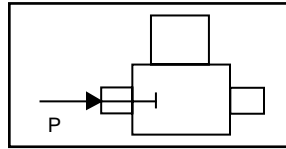
# S312 – 1/4" NPT, Brass Body, Normally Open

## Valve Selection List

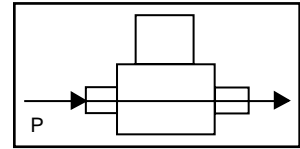
Normally Open



Energized



De-Energized



Pipe Size NPT	Orifice Size in.	C <sub>v</sub>	Minimum	Operating Pressure Differential (psi)								Max Fluid Temp. °F	Seal Material	Power Consumption (Watts)		Model Code (120V/60HZ — 110V/50HZ) Shown
				Maximum										AC	DC	
				Air/Gas		Water		Light Oil		Steam*						
				AC	DC	AC	DC	AC	DC	AC	DC			AC	DC	Brass Body
1/4	1/32	.03	0	2000	2000	2000	2000	—	—	150*	150*	295	EPR	8	9	S312GF02C8BC1
	3/64	.05	0	350	350	350	350	—	—	150*	150*	295	EPR	8	9	S312GF02C8BC3
	1/16	.10	0	200	200	200	200	—	—	150*	150*	295	EPR	8	9	S312GF02C8BC5
	5/64	.15	0	140	140	140	140	—	—	140*	140*	295	EPR	8	9	S312GF02C8BC7
	3/32	.20	0	105	105	105	105	—	—	105*	105*	295	EPR	8	9	S312GF02C8BC9
	7/64	.25	0	80	80	80	80	—	—	80*	80*	295	EPR	8	9	S312GF02C8BD3
	1/8	.30	0	60	60	60	60	—	—	60*	60*	295	EPR	8	9	S312GF02C8BD5
3/16	.65	0	30	30	30	30	—	—	30*	30*	295	EPR	8	9	S312GF02C8BE1	
1/4	1/32	.03	0	2000	2000	2000	2000	—	—	—	—	180	Nitrile	8	9	S312GF02N8BC1
	3/64	.05	0	350	350	350	350	350	350	—	—	180	Nitrile	8	9	S312GF02N8BC3
	1/16	.10	0	200	200	200	200	200	200	—	—	180	Nitrile	8	9	S312GF02N8BC5
	5/64	.15	0	140	140	140	140	140	140	—	—	180	Nitrile	8	9	S312GF02N8BC7
	3/32	.20	0	105	105	105	105	105	105	—	—	180	Nitrile	8	9	S312GF02N8BC9
	7/64	.25	0	80	80	80	80	80	80	—	—	180	Nitrile	8	9	S312GF02N8BD3
	1/8	.30	0	60	60	60	60	60	60	—	—	180	Nitrile	8	9	S312GF02N8BD5
3/16	.65	0	30	30	30	30	30	30	—	—	180	Nitrile	8	9	S312GF02N8BE1	
1/4	1/32	.03	0	2000	2000	2000	2000	2000	2000	—	—	230	Viton	8	9	S312GF02V8BC1
	3/64	.05	0	350	350	350	350	350	350	—	—	230	Viton	8	9	S312GF02V8BC3
	1/16	.10	0	200	200	200	200	200	200	—	—	230	Viton	8	9	S312GF02V8BC5
	5/64	.15	0	140	140	140	140	140	140	—	—	230	Viton	8	9	S312GF02V8BC7
	3/32	.20	0	105	105	105	105	105	105	—	—	230	Viton	8	9	S312GF02V8BC9
	7/64	.25	0	80	80	80	80	80	80	—	—	230	Viton	8	9	S312GF02V8BD3
	1/8	.30	0	60	60	60	60	60	60	—	—	230	Viton	8	9	S312GF02V8BD5
3/16	.65	0	30	30	30	30	30	30	—	—	230	Viton	8	9	S312GF02V8BE1	
1/4	1/32	.03	0	2000	2000	2000	2000	2000	2000	150*	150*	366	Rulon	8	9	S312GF02R8BC1
	3/64	.05	0	350	350	350	350	350	350	150*	150*	366	Rulon	8	9	S312GF02R8BC3
	1/16	.10	0	200	200	200	200	200	200	150*	150*	366	Rulon	8	9	S312GF02R8BC5
	5/64	.15	0	140	140	140	140	140	140	140*	140*	366	Rulon	8	9	S312GF02R8BC7
	3/32	.20	0	105	105	105	105	105	105	105*	105*	366	Rulon	8	9	S312GF02R8BC9
	7/64	.25	0	40	40	40	40	40	40	40*	40*	366	Rulon	8	9	S312GF02R8BD3
	1/8	.30	0	60	60	60	60	60	60	60*	60*	366	Rulon	8	9	S312GF02R8BD5
3/16	.65	0	30	30	30	30	30	30	30*	30*	366	Rulon	8	9	S312GF02R8BE1	
1/4	1/32	.03	0	2000	2000	2000	2000	2000	2000	150*	150*	366	Teflon	8	9	S312GF02T8BC1
	3/64	.05	0	350	350	350	350	350	350	150*	150*	366	Teflon	8	9	S312GF02T8BC3
	1/16	.10	0	200	200	200	200	200	200	150*	150*	366	Teflon	8	9	S312GF02T8BC5
	5/64	.15	0	140	140	140	140	140	140	140*	140*	366	Teflon	8	9	S312GF02T8BC7
	3/32	.20	0	105	105	105	105	105	105	105*	105*	366	Teflon	8	9	S312GF02T8BC9
	7/64	.25	0	80	80	80	80	80	80	80*	80*	366	Teflon	8	9	S312GF02T8BD3
	1/8	.30	0	60	60	60	60	60	60	60*	60*	366	Teflon	8	9	S312GF02T8BD5
3/16	.65	0	30	30	30	30	30	30	30*	30*	366	Teflon	8	9	S312GF02T8BE1	

\* Class H Coil Recommended for Steam and Other High Temperature Applications

GC Valves Customer Service: 800-828-0484 (7:30am to 4pm ET) or 800-582-4232 (7:30am to 4pm PT)

# S312 – 1/4" NPT, Brass Body, Normally Open



## Part Numbering

1	2	3	4	5	6	7	8	9	10	11	12	13
<b>S</b>	<b>3</b>	<b>1</b>	<b>2</b>	<b>G</b>	<b>F</b>	<b>0</b>	<b>2</b>	<b>C</b>	<b>8</b>	<b>B</b>	<b>C</b>	<b>1</b>
Series			Operating Mode	Housing*	Coil Class*	Voltage*		Seal Material	Body Material	Pipe Connection	Orifice Size	
S31			2: Normally Open	G: Conduit	F: Class F H: Class H	02: 120/60 110/50		C: EPR N: Nitrile V: Viton R: Rulon T: Teflon	8: Brass	B: 1/4" NPT	C1: 1/32" C3: 3/64" C5: 1/16" C9: 3/32" D5: 1/8" E1: 3/16"	
* See the "Engineering Guide" for additional voltages, variations and options.												

## Coil Data

Coil Family	
Type	Size
All	S3

Frequency (Hz)	60	50
Nominal Power (VA)	Inrush	36
	Holding	18

## 1/4" NPT Brass Body 2-Way Direct Acting Normally Open



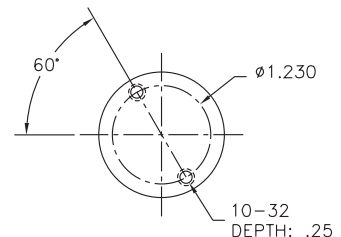
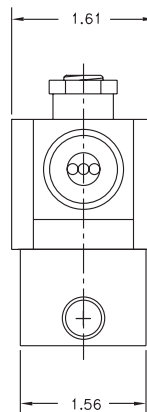
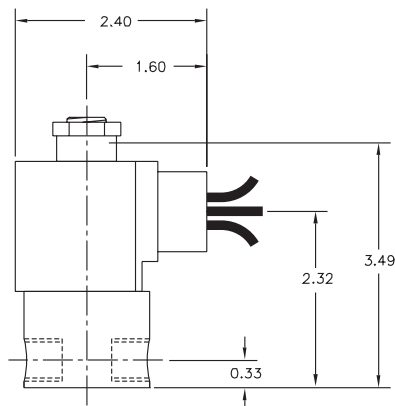
Materials	Seals:	Nitrile, Viton®, Ethylene Propylene, Teflon®, Rulon
	Orifice:	Stainless Steel
Electrical	Standard Housing:	Encapsulated Waterproof Conduit (NEMA 4/4X)
	Optional Housings:	Metallic Conduit, Explosion-proof (NEMA 7), Grommet, Open Frame, Junction Box (single or dual knockouts), DIN; Contact GC Valves Customer Service for others.
	Standard Voltages:	24, 120, 240 AC 60 Hz; 50 Hz available 6, 12, 24 DC; Contact GC Valves Customer Service for Additional Voltages.
	Voltage Tolerance:	±10% of applicable voltage
	Coil Classes:	F, H, N
	Standard Lead Length:	24 inch
Operating Temperature	Ambient (Nominal):	32°F to 125°F
Mounting	Position:	Any
Approvals*	Agency:	UL Listed, UL Recognized, CSA Approved

\* Not available for all variations

© Registered Trademark of DuPont Co.

### Dimensions/Weight

<b>Weight (lbs.)</b>
1.1



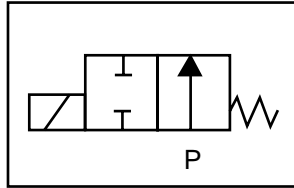
GC Valves Customer Service: 800-828-0484 (7:30am to 4pm ET) or 800-582-4232 (7:30am to 4pm PT)



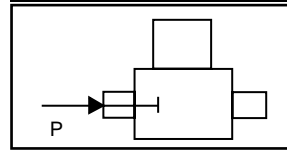
# S302 – 1/4" NPT, Brass Body, Normally Open

## Valve Selection List

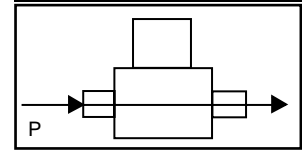
Normally Open



Energized



De-Energized



Pipe Size NPT	Orifice Size in.	C <sub>v</sub>	Operating Pressure Differential (psi)								Max Fluid Temp. °F	Seal Material	Power Consumption (Watts)		Model Code (120V/60HZ — 110V/50HZ Shown)	
			Maximum										AC	DC		
			Air/Gas		Water		Light Oil		Steam*							
			AC	DC	AC	DC	AC	DC	AC	DC			AC	DC	Brass Body	
1/4	1/32	.03	0	2400	2400	2400	2400	—	—	150*	150*	295	EPR	11	10	S302GF02C8BC1
	3/64	.05	0	600	600	600	600	—	—	150*	150*	295	EPR	11	10	S302GF02C8BC3
	1/16	.10	0	325	325	325	325	—	—	150*	150*	295	EPR	11	10	S302GF02C8BC5
	5/64	.15	0	235	235	235	235	—	—	150*	150*	295	EPR	11	10	S302GF02C8BC7
	3/32	.20	0	150	150	150	150	—	—	150*	150*	295	EPR	11	10	S302GF02C8BC9
	7/64	.25	0	125	125	125	125	—	—	125*	125*	295	EPR	11	10	S302GF02C8BD3
	1/8	.30	0	100	100	100	100	—	—	100*	100*	295	EPR	11	10	S302GF02C8BD5
	5/32	.43	0	60	60	60	60	—	—	60*	60*	295	EPR	11	10	S302GF02C8BD7
3/16	.65	0	40	40	40	40	—	—	40*	40*	295	EPR	11	10	S302GF02C8BE1	
1/4	1/32	.03	0	2400	2400	2400	2400	2400	2400	—	—	180	Nitrile	11	10	S302GF02N8BC1
	3/64	.05	0	600	600	600	600	600	600	—	—	180	Nitrile	11	10	S302GF02N8BC3
	1/16	.10	0	325	325	325	325	325	325	—	—	180	Nitrile	11	10	S302GF02N8BC5
	5/64	.15	0	235	235	235	235	235	235	—	—	180	Nitrile	11	10	S302GF02N8BC7
	3/32	.20	0	150	150	150	150	150	150	—	—	180	Nitrile	11	10	S302GF02N8BC9
	7/64	.25	0	125	125	125	125	125	125	—	—	180	Nitrile	11	10	S302GF02N8BD3
	1/8	.30	0	100	100	100	100	100	100	—	—	180	Nitrile	11	10	S302GF02N8BD5
	5/32	.43	0	60	60	60	60	60	60	—	—	180	Nitrile	11	10	S302GF02N8BD7
3/16	.65	0	40	40	40	40	40	40	—	—	180	Nitrile	11	10	S302GF02N8BE1	
1/4	1/32	.03	0	2400	2400	2400	2400	2400	2400	—	—	230	Viton	11	10	S302GF02V8BC1
	3/64	.05	0	600	600	600	600	600	600	—	—	230	Viton	11	10	S302GF02V8BC3
	1/16	.10	0	325	325	325	325	325	325	—	—	230	Viton	11	10	S302GF02V8BC5
	5/64	.15	0	235	235	235	235	235	235	—	—	230	Viton	11	10	S302GF02V8BC7
	3/32	.20	0	150	150	150	150	150	150	—	—	230	Viton	11	10	S302GF02V8BC9
	7/64	.25	0	125	125	125	125	125	125	—	—	230	Viton	11	10	S302GF02V8BD3
	1/8	.30	0	100	100	100	100	100	100	—	—	230	Viton	11	10	S302GF02V8BD5
	5/32	.43	0	60	60	60	60	60	60	—	—	230	Viton	11	10	S302GF02V8BD7
3/16	.65	0	40	40	40	40	40	40	—	—	230	Viton	11	10	S302GF02V8BE1	

\* Class H Coil Recommended for Steam and Other High Temperature Applications

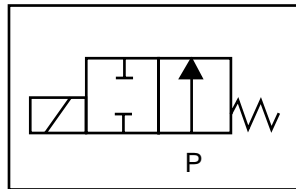
GC Valves Customer Service: 800-828-0484 (7:30am to 4pm ET) or 800-582-4232 (7:30am to 4pm PT)

# S302 – 1/4" NPT, Brass Body, Normally Open

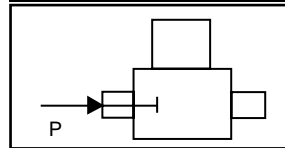


## Valve Selection List

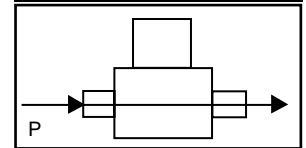
Normally Open



Energized



De-Energized



Pipe Size NPT	Orifice Size in.	C <sub>v</sub>	Minimum	Operating Pressure Differential (psi)								Max Fluid Temp. °F	Seal Material	Power Consumption (Watts)		Model Code (120V/60HZ — 110V/50HZ Shown)
				Maximum										AC	DC	
				Air/Gas		Water		Light Oil		Steam*						
				AC	DC	AC	DC	AC	DC	AC	DC			AC	DC	AC
1/4	1/32	.03	0	2400	2400	2400	2400	2400	2400	150*	150*	366	Rulon	11	10	S302GF02R8BC1
	3/64	.05	0	600	600	600	600	600	600	150*	150*	366	Rulon	11	10	S302GF02R8BC3
	1/16	.10	0	325	325	325	325	325	325	150*	150*	366	Rulon	11	10	S302GF02R8BC5
	7/64	.15	0	235	235	235	235	235	235	150*	150*	366	Rulon	11	10	S302GF02R8BC7
	3/32	.20	0	150	150	150	150	150	150	150*	150*	366	Rulon	11	10	S302GF02R8BC9
	7/64	.25	0	125	125	125	125	125	125	125*	125*	366	Rulon	11	10	S302GF02R8BD3
	1/8	.30	0	100	100	100	100	100	100	100*	100*	366	Rulon	11	10	S302GF02R8BD5
	5/32	.43	0	60	60	60	60	60	60	60*	60*	366	Rulon	11	10	S302GF02R8BD7
3/16	.65	0	40	40	40	40	40	40	40*	40*	366	Rulon	11	10	S302GF02R8BE1	
1/4	1/32	.03	0	2400	2400	2400	2400	2400	2400	150*	150*	366	Teflon	11	10	S302GF02T8BC1
	3/64	.05	0	600	600	600	600	600	600	150*	150*	366	Teflon	11	10	S302GF02T8BC3
	1/16	.10	0	325	325	325	325	325	325	150*	150*	366	Teflon	11	10	S302GF02T8BC5
	5/64	.15	0	235	235	235	235	235	235	150*	150*	366	Teflon	11	10	S302GF02T8BC7
	3/32	.20	0	150	150	150	150	150	150	150*	150*	366	Teflon	11	10	S302GF02T8BC9
	7/64	.25	0	125	125	125	125	125	125	125*	125*	366	Teflon	11	10	S302GF02T8BD3
	1/8	.30	0	100	100	100	100	100	100	100*	100*	366	Teflon	11	10	S302GF02T8BD5
	5/32	.43	0	60	60	60	60	60	60	60*	60*	366	Teflon	11	10	S302GF02T8BD7
3/16	.65	0	40	40	40	40	40	40	40*	40*	366	Teflon	11	10	S302GF02T8BE1	

\* Class H Coil Recommended for Steam and Other High Temperature Applications



# S302 – 1/4" NPT, Brass Body, Normally Open

## Part Numbering

1	2	3	4	5	6	7	8	9	10	11	12	13
<b>S</b>	<b>3</b>	<b>0</b>	<b>2</b>	<b>G</b>	<b>F</b>	<b>0</b>	<b>2</b>	<b>C</b>	<b>8</b>	<b>B</b>	<b>C</b>	<b>1</b>
Series			Operating Mode	Housing*	Coil Class*	Voltage*		Seal Material	Body Material	Pipe Connection	Orifice Size	
S30			2: Normally Open	G: Conduit	F: Class F H: Class H	02: 120/60 110/50		C: EPR N: Nitrile V: Viton R: Rulon T: Teflon	8: Brass	B: 1/4" NPT	C1: 1/32" C3: 3/64" C5: 1/16" C9: 3/32" D5: 1/8" E1: 3/16"	
* See the "Engineering Guide" for additional voltages, variations and options.												

## Coil Data

Coil Family	
Type	Size
All	S4

Frequency (Hz)	60	50
Nominal Power (VA)	Inrush	46
	Holding	22

- 1/4" NPT
- Brass Body
- 2-Way Piloted Piston
- Normally Open

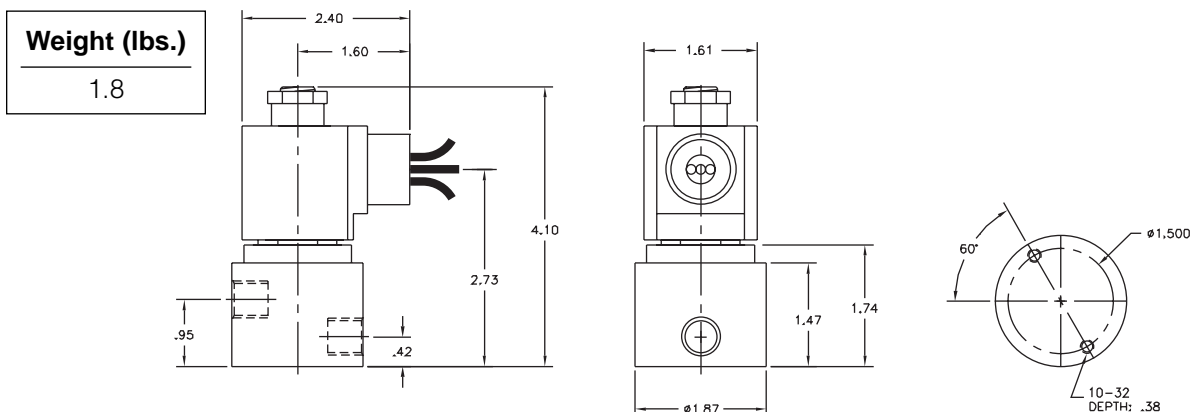


Materials	Seals:	Nitrile, Viton®, Teflon®, Ethylene Propylene
	Orifice: Pilot Main	Stainless Steel Stainless Steel Ø 3/8"
Electrical	Standard Housing:	Encapsulated Waterproof Conduit (NEMA 4/4X)
	Optional Housings:	Metallic Conduit, Explosion-proof (NEMA 7), Grommet, Open Frame, Junction Box (single or dual knockouts), DIN; Contact GC Valves Customer Service for others.
	Standard Voltages:	24, 120, 240 AC 60 Hz; 50 Hz available 6, 12, 24 DC; Contact GC Valves Customer Service for Additional Voltages.
	Voltage Tolerance:	±10% of applicable voltage
	Coil Classes:	F, H, N
	Standard Lead Length:	24 inch
Operating Temperature	Ambient (Nominal):	32°F to 125°F
Mounting	Position:	Any
Approvals*	Agency:	UL Listed, UL Recognized, CSA Approved

\* Not available for all variations

© Registered Trademark of DuPont Co.

## Dimensions/Weight



GC Valves Customer Service: 800-828-0484 (7:30am to 4pm ET) or 800-582-4232 (7:30am to 4pm PT)

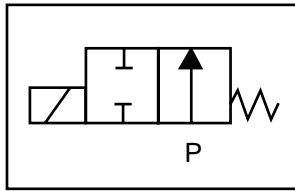




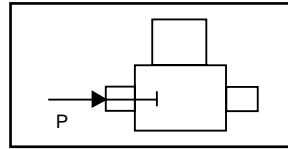
# S402 – 1/4" NPT, Brass Body, Normally Open

## Valve Selection List

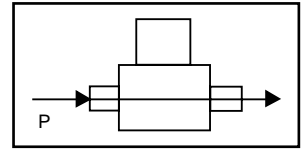
Normally Open



Energized



De-Energized



Pipe Size NPT	Orifice Size IN	C <sub>v</sub>	Operating Pressure Differential (psi)								Max Fluid Temp. °F	Seal Material	Power Consumption (Watts)		Model Code ( 120V/60HZ — 110V/50HZ ) Shown	
			Minimum				Maximum						AC	DC		
			AC	DC	AC	DC	#5 and #6 Heated Fuel Oil	Steam*	AC	DC						
1/4	3/8	.8	0	300	150	300	150	—	—	—	—	295	EPR	10	10	S402GF02C9BF5
	3/8	.8	0	300	150	300	150	300	150	—	—	180	Nitrile	10	10	S402GF02N9BF5
	3/8	.8	0	300	150	300	150	300	150	—	—	230	Viton	10	10	S402GF02V9BF5
	3/8	.8	0	300	150	300	150	300	150	—	—	366	Teflon	10	10	S402GF02T9BF5
	3/8	.8	0	—	—	—	—	—	—	50*	50*	295	EPR**	10	10	S402GH02E9BF5
	3/8	.8	0	—	—	—	—	—	—	150*	150*	366	Teflon**	10	9	S402GH02S9BF5

\* Class H Coil Recommended for Steam and Other High Temperature Applications

## Part Numbering

1	2	3	4	5	6	7	8	9	10	11	12	13
<b>S</b>	<b>4</b>	<b>0</b>	<b>2</b>	<b>G</b>	<b>F</b>	<b>0</b>	<b>2</b>	<b>C</b>	<b>9</b>	<b>B</b>	<b>F</b>	<b>5</b>
Series			Operating Mode	Housing*	Coil Class*	Voltage*		Seal Material	Body Material	Pipe Connection	Orifice Size	
S40			2: Normally Open	G: Conduit	F: Class F H: Class H	02: 120/60 110/50		C: EPR N: Nitrile V: Viton T: Teflon E: EPR** S: Teflon**	9: Brass	B: 1/4" NPT	F5: 3/8"	

\* See the "Engineering Guide" for additional voltages, variations and options.

\*\*For Steam Service

## Coil Data

Coil Family	
Type	Size
All	S4

Frequency (Hz)	60	50
Nominal Power (VA)	Inrush	46
	Holding	22

GC Valves Customer Service: 800-828-0484 (7:30am to 4pm ET) or 800-582-4232 (7:30am to 4pm PT)

## 1/4" NPT Stainless Steel 2-Way Direct Acting Normally Open



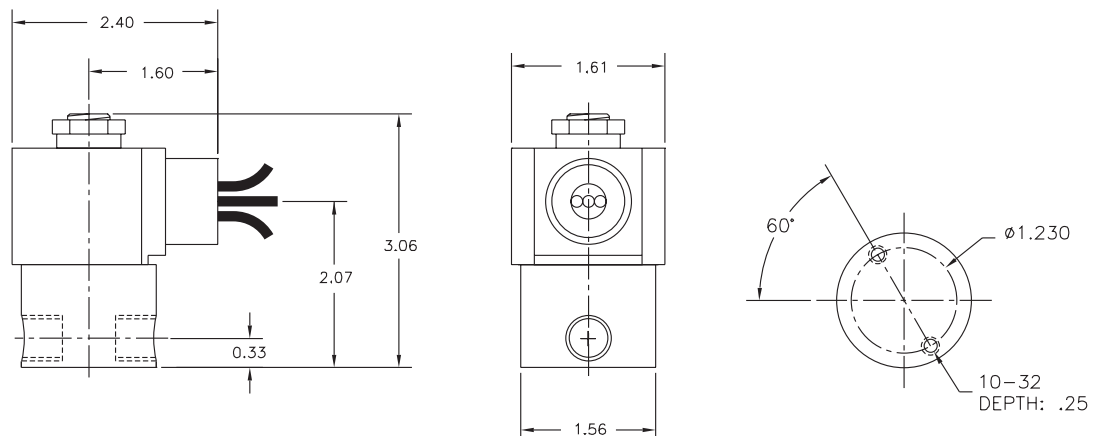
Materials	Seals:	Nitrile, Viton®, Ethylene Propylene, Teflon®, Rulon
	Orifice:	Stainless Steel
Electrical	Standard Housing:	Encapsulated Waterproof Conduit (NEMA 4/4X)
	Optional Housings:	Metallic Conduit, Explosion-proof (NEMA 7), Grommet, Open Frame, Junction Box (single or dual knockouts), DIN; Contact GC Valves Customer Service for others.
	Standard Voltages:	24, 120, 240 AC 60 Hz; 50 Hz available 6, 12, 24 DC; Contact GC Valves Customer Service for Additional Voltages.
	Voltage Tolerance:	±10% of applicable voltage
	Coil Classes:	F, H, N
	Standard Lead Length:	24 inch
Operating Temperature	Ambient (Nominal):	32°F to 125°F
Mounting	Position:	Any
Approvals*	Agency:	UL Listed, UL Recognized, CSA Approved

\* Not available for all variations

© Registered Trademark of DuPont Co.

### Dimensions/Weight

<b>Weight (lbs.)</b>
0.9



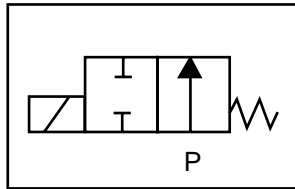
**GC Valves Customer Service: 800-828-0484 (7:30am to 4pm ET) or 800-582-4232 (7:30am to 4pm PT)**



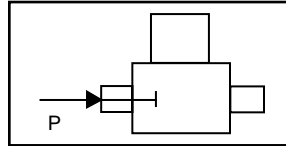
# S312 – 1/4" NPT, Stainless Steel Body, Normally Open

## Valve Selection List

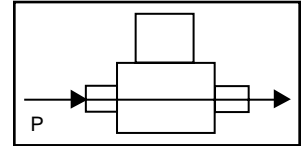
Normally Open



Energized



De-Energized



Pipe Size NPT	Orifice Size in.	C <sub>v</sub>	Operating Pressure Differential (psi)										Max Fluid Temp. °F	Seal Material	Power Consumption (Watts)		Model Code (120V/60HZ — 110V/50HZ) Shown	
			Maximum												AC	DC		
			Air/Gas		Water		Light Oil		Steam*									
			AC	DC	AC	DC	AC	DC	AC	DC	AC	DC						
Minimum																Stainless Steel Body		
1/4	1/32	.03	0	2000	2000	2000	2000	2000	2000	—	—	150*	150*	295	EPR	8	9	S312GF02C2BC1
	3/64	.05	0	350	350	350	350	350	350	—	—	150*	150*	295	EPR	8	9	S312GF02C3BC3
	1/16	.10	0	200	200	200	200	200	200	—	—	150*	150*	295	EPR	8	9	S312GF02C3BC5
	5/64	.15	0	140	140	140	140	140	140	—	—	140*	140*	295	EPR	8	9	S312GF02C3BC7
	3/32	.22	0	105	105	105	105	105	105	—	—	105*	105*	295	EPR	8	9	S312GF02C3BC9
	7/64	.25	0	80	80	80	80	80	80	—	—	80*	80*	295	EPR	8	9	S312GF02C3BD3
	1/8	.30	0	60	60	60	60	60	60	—	—	60*	60*	295	EPR	8	9	S312GF02C3BD5
	3/16	.65	0	30	30	30	30	30	30	—	—	30*	30*	295	EPR	8	9	S312GF02C3BE1
1/4	1/32	.03	0	2000	2000	2000	2000	2000	2000	—	—	180	180	180	Nitrile	8	9	S312GF02N2BC1
	3/64	.05	0	350	350	350	350	350	350	—	—	180	180	180	Nitrile	8	9	S312GF02N3BC3
	1/16	.10	0	200	200	200	200	200	200	—	—	180	180	180	Nitrile	8	9	S312GF02N3BC5
	5/64	.15	0	140	140	140	140	140	140	—	—	180	180	180	Nitrile	8	9	S312GF02N3BC7
	3/32	.20	0	105	105	105	105	105	105	—	—	180	180	180	Nitrile	8	9	S312GF02N3BC9
	7/64	.25	0	80	80	80	80	80	80	—	—	180	180	180	Nitrile	8	9	S312GF02N3BD3
	1/8	.30	0	60	60	60	60	60	60	—	—	180	180	180	Nitrile	8	9	S312GF02N3BD5
	3/16	.65	0	30	30	30	30	30	30	—	—	180	180	180	Nitrile	8	9	S312GF02N3BE1
1/4	1/32	.03	0	2000	2000	2000	2000	2000	2000	—	—	230	230	230	Viton	8	9	S312GF02V2ABC1
	3/64	.05	0	350	350	350	350	350	350	—	—	230	230	230	Viton	8	9	S312GF02V3BC3
	1/16	.10	0	200	200	200	200	200	200	—	—	230	230	230	Viton	8	9	S312GF02V3BC5
	5/64	.15	0	140	140	140	140	140	140	—	—	230	230	230	Viton	8	9	S312GF02V3BC7
	3/32	.20	0	105	105	105	105	105	105	—	—	230	230	230	Viton	8	9	S312GF02V3BC9
	7/64	.25	0	80	80	80	80	80	80	—	—	230	230	230	Viton	8	9	S312GF02V3BD3
	1/8	.30	0	60	60	60	60	60	60	—	—	230	230	230	Viton	8	9	S312GF02V3BD5
	3/16	.65	0	30	30	30	30	30	30	—	—	230	230	230	Viton	8	9	S312GF02V3BE1
1/4	1/32	.03	0	2000	2000	2000	2000	2000	2000	150*	150*	366	366	366	Rulon	8	9	S312GF02R2BC1
	3/64	.05	0	350	350	350	350	350	350	150*	150*	366	366	366	Rulon	8	9	S312GF02R3BC3
	1/16	.10	0	200	200	200	200	200	200	150*	150*	366	366	366	Rulon	8	9	S312GF02R3BC5
	5/64	.15	0	140	140	140	140	140	140	140*	140*	366	366	366	Rulon	8	9	S312GF02R3BC7
	3/32	.20	0	105	105	105	105	105	105	105*	105*	366	366	366	Rulon	8	9	S312GF02R3BC9
	7/64	.25	0	80	80	80	80	80	80	80*	80*	366	366	366	Rulon	8	9	S312GF02R3BD3
	1/8	.30	0	60	60	60	60	60	60	60*	60*	366	366	366	Rulon	8	9	S312GF02R3BD5
	3/16	.65	0	30	30	30	30	30	30	30*	30*	366	366	366	Rulon	8	9	S312GF02R3BE1
1/4	1/32	.03	0	2000	2000	2000	2000	2000	2000	150*	150*	366	366	366	Teflon	8	9	S312GF02T2BC1
	3/64	.05	0	350	350	350	350	350	350	150*	150*	366	366	366	Teflon	8	9	S312GF02T3BC3
	1/16	.10	0	200	200	200	200	200	200	150*	150*	366	366	366	Teflon	8	9	S312GF02T3BC5
	5/64	.15	0	140	140	140	140	140	140	140*	140*	366	366	366	Teflon	8	9	S312GF02T3BC7
	3/32	.20	0	105	105	105	105	105	105	105*	105*	366	366	366	Teflon	8	9	S312GF02T3BC9
	7/64	.25	0	80	80	80	80	80	80	80*	80*	366	366	366	Teflon	8	9	S312GF02T3BD3
	1/8	.30	0	60	60	60	60	60	60	60*	60*	366	366	366	Teflon	8	9	S312GF02T3BD5
	3/16	.65	0	30	30	30	30	30	30	30*	30*	366	366	366	Teflon	8	9	S312GF02T3BE1

\* Class H Coil Recommended for Steam and Other High Temperature Applications

GC Valves Customer Service: 800-828-0484 (7:30am to 4pm ET) or 800-582-4232 (7:30am to 4pm PT)

# S312 – 1/4" NPT, Stainless Steel Body, Normally Open



## Part Numbering

1	2	3	4	5	6	7	8	9	10	11	12	13
<b>S</b>	<b>3</b>	<b>1</b>	<b>2</b>	<b>G</b>	<b>F</b>	<b>0</b>	<b>2</b>	<b>V</b>	<b>3</b>	<b>B</b>	<b>C</b>	<b>1</b>
Series			Operating Mode	Housing*	Coil Class*	Voltage*		Seal Material	Body Material	Pipe Connection	Orifice Size	
S31			2: Normally Open	G: Conduit	F: Class F H: Class H	02: 120/60 110/50		C: EPR N: Nitrile V: Viton R: Rulon T: Teflon	3: Stainless Steel	B: 1/4" NPT	C1: 1/32" C3: 3/64" C5: 1/16" C9: 3/32" D5: 1/8" E1: 3/16"	
* See the "Engineering Guide" for additional voltages, variations and options.												

## Coil Data

Coil Family	
Type	Size
All	S3

Frequency (Hz)	60	50	
Nominal Power (VA)	Inrush	36	36
	Holding	18	19

## 1/4" NPT Stainless Steel Body 2-Way Direct Acting Normally Open



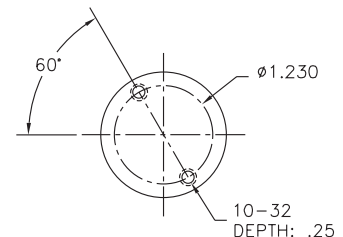
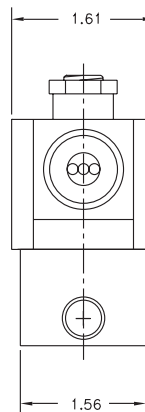
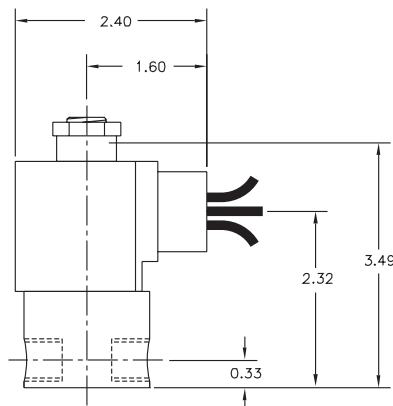
Materials	Seals:	Nitrile, Viton®, Ethylene Propylene, Teflon®, Rulon
	Orifice:	Stainless Steel
Electrical	Standard Housing:	Encapsulated Waterproof Conduit (NEMA 4/4X)
	Optional Housings:	Metallic Conduit, Explosion-proof (NEMA 7), Grommet, Open Frame, Junction Box (single or dual knockouts), DIN; Contact GC Valves Customer Service for others.
	Standard Voltages:	24, 120, 240 AC 60 Hz; 50 Hz available 6, 12, 24 DC; Contact GC Valves Customer Service for Additional Voltages.
	Voltage Tolerance:	±10% of applicable voltage
	Coil Classes:	F, H, N
	Standard Lead Length:	24 inch
Operating Temperature	Ambient (Nominal):	32°F to 125°F
Mounting	Position:	Any
Approvals*	Agency:	UL Listed, UL Recognized, CSA Approved

\* Not available for all variations

© Registered Trademark of DuPont Co.

### Dimensions/Weight

<b>Weight (lbs.)</b>
1.1



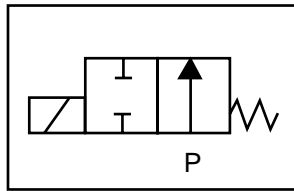
GC Valves Customer Service: 800-828-0484 (7:30am to 4pm ET) or 800-582-4232 (7:30am to 4pm PT)



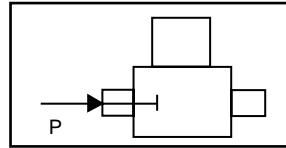
# S302 – 1/4" NPT, Stainless Steel Body, Normally Open

## Valve Selection List

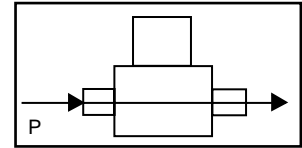
Normally Open



Energized



De-Energized



Pipe Size NPT	Orifice Size in.	C <sub>v</sub>	Operating Pressure Differential (psi)										Max Fluid Temp. °F	Seal Material	Power Consumption (Watts)		Model Code (120V/60HZ — 110V/50HZ Shown)
			Maximum												AC	DC	
			Air/Gas		Water		Light Oil		Steam*								
			AC	DC	AC	DC	AC	DC	AC	DC	AC	DC					
1/4	1/32	.03	0	2400	2400	2400	2400	—	—	150*	150*	295	EPR	11	10	S302GF02C3BC1	
	3/64	.05	0	600	600	600	600	—	—	150*	150*	295	EPR	11	10	S302GF02C3BC3	
	1/16	.10	0	325	325	325	325	—	—	150*	150*	295	EPR	11	10	S302GF02C3BC5	
	5/64	.15	0	235	235	2235	235	—	—	150*	150*	295	EPR	11	10	S302GF02C3BC7	
	3/32	.20	0	150	150	150	150	—	—	150*	150*	295	EPR	11	10	S302GF02C3BC9	
	7/64	.25	0	125	125	125	125	—	—	125*	125*	295	EPR	11	10	S302GF02C3BD3	
	1/8	.30	0	100	100	100	100	—	—	100*	100*	295	EPR	11	10	S302GF02C3BD5	
	5/32	.43	0	60	60	60	60	—	—	60*	60*	295	EPR	11	10	S302GF02C3BD7	
3/16	.65	0	40	40	40	40	—	—	40*	40*	295	EPR	11	10	S302GF02C3BE1		
1/4	1/32	.03	0	2400	2400	2400	2400	2400	2400	—	—	180	Nitrile	11	10	S302GF02N3BC1	
	3/64	.05	0	600	600	600	600	600	600	—	—	180	Nitrile	11	10	S302GF02N3BC3	
	1/16	.10	0	325	325	325	325	325	325	—	—	180	Nitrile	11	10	S302GF02N3BC5	
	5/64	.15	0	235	235	235	235	235	235	—	—	180	Nitrile	11	10	S302GF02N3BC7	
	3/32	.20	0	150	150	150	150	150	150	—	—	180	Nitrile	11	10	S302GF02N3BC9	
	7/64	.25	0	125	125	125	125	125	125	—	—	180	Nitrile	11	10	S302GF02N3BD3	
	1/8	.30	0	100	100	100	100	100	100	—	—	180	Nitrile	11	10	S302GF02N3BD5	
	5/32	.43	0	60	60	60	60	60	60	—	—	180	Nitrile	11	10	S302GF02N3BD7	
3/16	.65	0	40	40	40	40	40	40	—	—	180	Nitrile	11	10	S302GF02N3BE1		
1/4	1/32	.03	0	2400	2400	2400	2400	2400	2400	—	—	230	Viton	11	10	S302GF02V3BC1	
	3/64	.05	0	600	600	600	600	600	600	—	—	230	Viton	11	10	S302GF02V3BC3	
	1/16	.10	0	325	325	325	325	325	325	—	—	230	Viton	11	10	S302GF02V3BC5	
	5/64	.15	0	235	235	235	235	235	235	—	—	230	Viton	11	10	S302GF02V3BC7	
	3/32	.20	0	150	150	150	150	150	150	—	—	230	Viton	11	10	S302GF02V3BC9	
	7/64	.25	0	125	125	125	125	125	125	—	—	230	Viton	11	10	S302GF02V3BD3	
	1/8	.30	0	100	100	100	100	100	100	—	—	230	Viton	11	10	S302GF02V3BD5	
	5/32	.43	0	60	60	60	60	60	60	—	—	230	Viton	11	10	S302GF02V3BD7	
3/16	.65	0	40	40	40	40	40	40	—	—	230	Viton	11	10	S302GF02V3BE1		

\* Class H Coil Recommended for Steam and Other High Temperature Applications

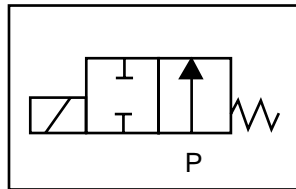
GC Valves Customer Service: 800-828-0484 (7:30am to 4pm ET) or 800-582-4232 (7:30am to 4pm PT)

# S302 – 1/4" NPT, Stainless Steel Body, Normally Open

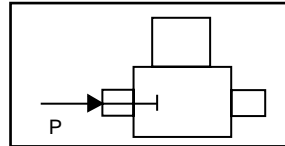


## Valve Selection List

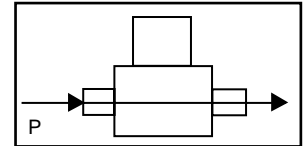
Normally Open



Energized



De-Energized



Pipe Size NPT	Orifice Size in.	C <sub>v</sub>	Minimum	Operating Pressure Differential (psi)								Max Fluid Temp. °F	Seal Material	Power Consumption (Watts)		Model Code (120V/60HZ — 110V/50HZ Shown)
				Maximum										AC	DC	
				Air/Gas		Water		Light Oil		Steam*						
				AC	DC	AC	DC	AC	DC	AC	DC			AC	DC	AC
1/4	1/32	.03	0	2400	2400	2400	2400	2400	2400	150*	150*	366	Rulon	11	10	S302GF02R3BC1
	3/64	.05	0	600	600	600	600	600	600	150*	150*	366	Rulon	11	10	S302GF02R3BC3
	1/16	.10	0	325	325	325	325	325	325	150*	150*	366	Rulon	11	10	S302GF02R3BC5
	5/64	.15	0	235	235	235	235	235	235	150*	150*	366	Rulon	11	10	S302GF02R3BC7
	3/32	.20	0	150	150	150	150	150	150	150*	150*	366	Rulon	11	10	S302GF02R3BC9
	7/64	.25	0	125	125	125	125	125	125	125*	125*	366	Rulon	11	10	S302GF02R3BD3
	1/8	.30	0	100	100	100	100	100	100	100*	100*	366	Rulon	11	10	S302GF02R3BD5
	5/32	.43	0	60	60	60	60	60	60	60*	60*	366	Rulon	11	10	S302GF02R3BD7
3/16	.65	0	40	40	40	40	40	40	40*	40*	366	Rulon	11	10	S302GF02R3BE1	
1/4	1/32	.03	0	2400	2400	2400	2400	2400	2400	150*	150*	366	Teflon	11	10	S302GF02T3BC1
	3/64	.05	0	600	600	600	600	600	600	150*	150*	366	Teflon	11	10	S302GF02T3BC3
	1/16	.10	0	325	325	325	325	325	325	150*	150*	366	Teflon	11	10	S302GF02T3BC5
	5/64	.15	0	235	235	235	235	235	235	150*	150*	366	Teflon	11	10	S302GF02T3BC7
	3/32	.20	0	150	150	150	150	150	150	150*	150*	366	Teflon	11	10	S302GF02T3BC9
	7/64	.25	0	125	125	125	125	125	125	125*	125*	366	Teflon	11	10	S302GF02T3BD3
	1/8	.30	0	100	100	100	100	100	100	100*	100*	366	Teflon	11	10	S302GF02T3BD5
	5/32	.43	0	60	60	60	60	60	60	60*	60*	366	Teflon	11	10	S302GF02T3BD7
3/16	.65	0	40	40	40	40	40	40	40*	40*	366	Teflon	11	10	S302GF02T3BE1	

\* Class H Coil Recommended for Steam and Other High Temperature Applications



# S302 – 1/4" NPT, Stainless Steel Body, Normally Open

## Part Numbering

1	2	3	4	5	6	7	8	9	10	11	12	13
<b>S</b>	<b>3</b>	<b>0</b>	<b>2</b>	<b>G</b>	<b>F</b>	<b>0</b>	<b>2</b>	<b>C</b>	<b>3</b>	<b>B</b>	<b>C</b>	<b>1</b>
Series			Operating Mode	Housing*	Coil Class*	Voltage*		Seal Material	Body Material	Pipe Connection	Orifice Size	
S30			2: Normally Open	G: Conduit	F: Class F H: Class H	02: 120/60 110/50		C: EPR N: Nitrile V: Viton R: Rulon T: Teflon	3: Stainless Steel	B: 1/4" NPT	C1: 1/32" C3: 3/64" C5: 1/16" C9: 3/32" D5: 1/8" E1: 3/16"	
* See the "Engineering Guide" for additional voltages, variations and options.												

## Coil Data

Coil Family	
Type	Size
All	S4

Frequency (Hz)	60	50
Nominal Power (VA)	Inrush	46
	Holding	22

GC Valves Customer Service: 800-828-0484 (7:30am to 4pm ET) or 800-582-4232 (7:30am to 4pm PT)



# S40 Series



- 1/4" NPT
- Stainless Steel Body
- 2-Way Piloted Piston
- Normally Open

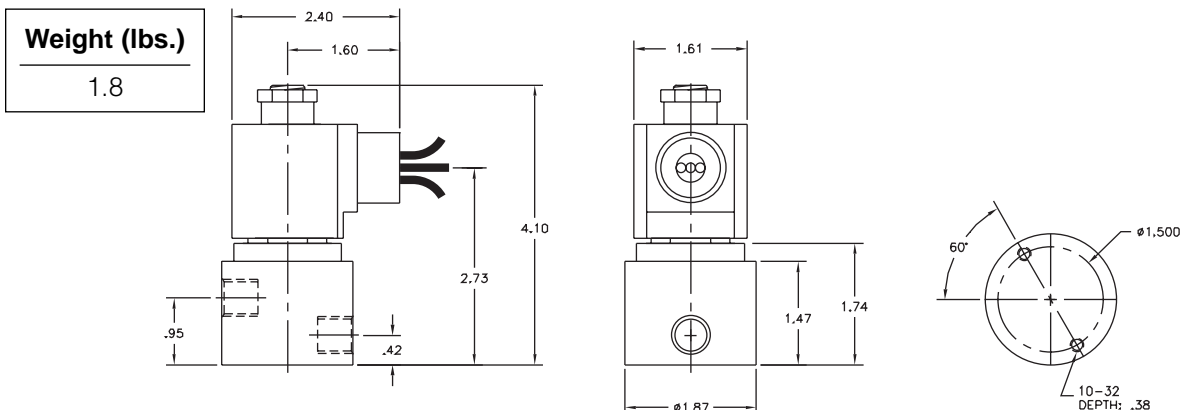


Materials	Seals:	Nitrile, Viton®, Teflon®, Ethylene Propylene
	Orifice: Pilot Main	Stainless Steel Stainless Steel Ø 3/8"
Electrical	Standard Housing:	Encapsulated Waterproof Conduit (NEMA 4/4X)
	Optional Housings:	Metallic Conduit, Explosion-proof (NEMA 7), Grommet, Open Frame, Junction Box (single or dual knockouts), DIN; Contact GC Valves Customer Service for others.
	Standard Voltages:	24, 120, 240 AC 60 Hz; 50 Hz available 6, 12, 24 DC; Contact GC Valves Customer Service for Additional Voltages.
	Voltage Tolerance:	±10% of applicable voltage
	Coil Classes:	F, H, N
	Standard Lead Length:	24 inch
Operating Temperature	Ambient (Nominal):	32°F to 125°F
Mounting	Position:	Any
Approvals*	Agency:	UL Listed, UL Recognized, CSA Approved

\* Not available for all variations

© Registered Trademark of DuPont Co.

## Dimensions/Weight



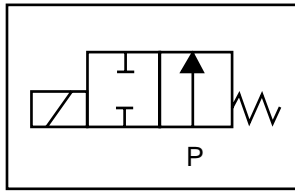
GC Valves Customer Service: 800-828-0484 (7:30am to 4pm ET) or 800-582-4232 (7:30am to 4pm PT)



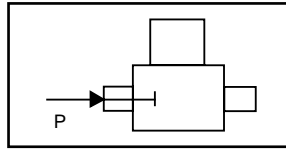
# S402 – 1/4" NPT, Stainless Steel Body, Normally Open

## Valve Selection List

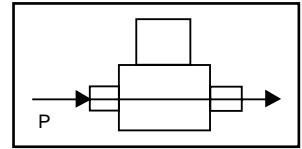
Normally Open



Energized



De-Energized



Pipe Size NPT	Orifice Size IN	C <sub>v</sub>	Operating Pressure Differential (psi)								Max Fluid Temp. °F	Seal Material	Power Consumption (Watts)		Model Code ( 120V/60HZ — 110V/50HZ ) Shown	
			Minimum				Maximum						AC	DC		
			AC	DC	AC	DC	#5 and #6 Heated Fuel Oil	Steam*	AC	DC						
1/4	3/8	.8	0	300	150	300	150	—	—	—	—	295	EPR	10	10	S402GF02C1BF5
	3/8	.8	0	300	150	300	150	300	150	—	—	180	Nitrile	10	10	S402GF02N1BF5
	3/8	.8	0	300	150	300	150	300	150	—	—	230	Viton	10	10	S402GF02V1BF5
	3/8	.8	0	300	150	300	150	300	150	—	—	366	Teflon	10	10	S402GF02T1BF5
	3/8	.8	0	—	—	—	—	—	—	50*	50*	295	EPR**	10	10	S402GH02E1BF5
	3/8	.8	0	—	—	—	—	—	—	150*	150*	366	Teflon**	10	9	S402GH02S1BF5

\* Class H Coil Recommended for Steam and Other High Temperature Applications

## Part Numbering

1	2	3	4	5	6	7	8	9	10	11	12	13
<b>S</b>	<b>4</b>	<b>0</b>	<b>2</b>	<b>G</b>	<b>F</b>	<b>0</b>	<b>2</b>	<b>C</b>	<b>1</b>	<b>B</b>	<b>F</b>	<b>5</b>
Series			Operating Mode	Housing*	Coil Class*	Voltage*		Seal Material	Body Material	Pipe Connection	Orifice Size	
S40			2: Normally Open	G: Conduit	F: Class F H: Class H	02: 120/60 110/50		C: EPR N: Nitrile V: Viton T: Teflon E: EPR** S: Teflon**	1: Stainless Steel	B: 1/4" NPT	F5: 3/8"	
* See the "Engineering Guide" for additional voltages, variations and options.												

\*\*For Steam Service

## Coil Data

Coil Family	
Type	Size
All	S4

Frequency (Hz)	60	50
Nominal Power (VA)		
Inrush	46	46
Holding	22	25

GC Valves Customer Service: 800-828-0484 (7:30am to 4pm ET) or 800-582-4232 (7:30am to 4pm PT)

## 1/4" NPT Stainless Steel Body 2-Way Direct Acting Normally Open



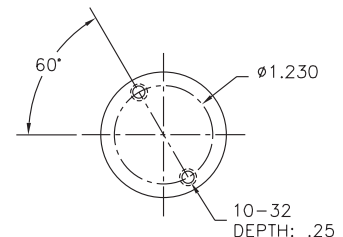
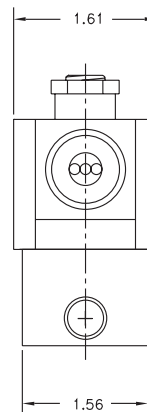
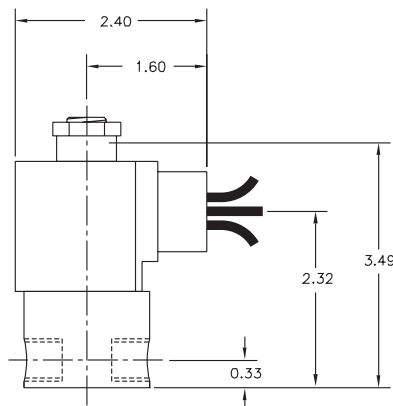
Materials	Seals:	Nitrile, Viton®, Ethylene Propylene, Teflon®, Rulon
	Orifice:	Stainless Steel
Electrical	Standard Housing:	Encapsulated Waterproof Conduit (NEMA 4/4X)
	Optional Housings:	Metallic Conduit, Explosion-proof (NEMA 7), Grommet, Open Frame, Junction Box (single or dual knockouts), DIN; Contact GC Valves Customer Service for others.
	Standard Voltages:	24, 120, 240 AC 60 Hz; 50 Hz available 6, 12, 24 DC; Contact GC Valves Customer Service for Additional Voltages.
	Voltage Tolerance:	±10% of applicable voltage
	Coil Classes:	F, H, N
	Standard Lead Length:	24 inch
Operating Temperature	Ambient (Nominal):	32°F to 125°F
Mounting	Position:	Any
Approvals*	Agency:	UL Listed, UL Recognized, CSA Approved

\* Not available for all variations

© Registered Trademark of DuPont Co.

### Dimensions/Weight

<b>Weight (lbs.)</b>
1.1



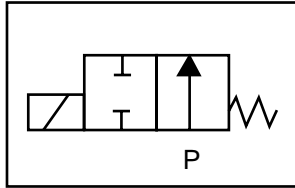
GC Valves Customer Service: 800-828-0484 (7:30am to 4pm ET) or 800-582-4232 (7:30am to 4pm PT)



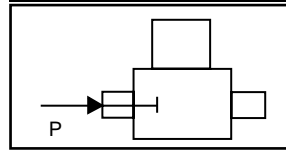
# S302 – 1/4" NPT, Stainless Steel Body, Normally Open

## Valve Selection List

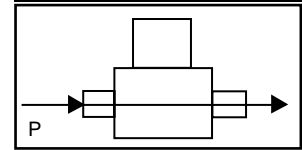
Normally Open



Energized



De-Energized



Pipe Size NPT	Orifice Size in.	C <sub>v</sub>	Operating Pressure Differential (psi)										Max Fluid Temp. °F	Seal Material	Power Consumption (Watts)		Model Code (120V/60HZ — 110V/50HZ Shown)	
			Maximum												AC	DC		
			Air/Gas		Water		Light Oil		Steam*		AC	DC						
			AC	DC	AC	DC	AC	DC	AC	DC					AC	DC	Stainless Steel Body	
1/4	1/32	.03	0	2400	2400	2400	2400	2400	2400	—	—	150*	150*	295	EPR	11	10	S302GF02C3BC1
	3/64	.05	0	600	600	600	600	600	600	—	—	150*	150*	295	EPR	11	10	S302GF02C3BC3
	1/16	.10	0	325	325	325	325	325	325	—	—	150*	150*	295	EPR	11	10	S302GF02C3BC5
	5/64	.15	0	235	235	2235	235	—	—	—	—	150*	150*	295	EPR	11	10	S302GF02C3BC7
	3/32	.20	0	150	150	150	150	—	—	—	—	150*	150*	295	EPR	11	10	S302GF02C3BC9
	7/64	.25	0	125	125	125	125	—	—	—	—	125*	125*	295	EPR	11	10	S302GF02C3BD3
	1/8	.30	0	100	100	100	100	—	—	—	—	100*	100*	295	EPR	11	10	S302GF02C3BD5
	5/32	.43	0	60	60	60	60	—	—	—	—	60*	60*	295	EPR	11	10	S302GF02C3BD7
3/16	.65	0	40	40	40	40	—	—	—	—	40*	40*	295	EPR	11	10	S302GF02C3BE1	
1/4	1/32	.03	0	2400	2400	2400	2400	2400	2400	—	—	180	—	180	Nitrile	11	10	S302GF02N3BC1
	3/64	.05	0	600	600	600	600	600	600	—	—	180	—	180	Nitrile	11	10	S302GF02N3BC3
	1/16	.10	0	325	325	325	325	325	325	—	—	180	—	180	Nitrile	11	10	S302GF02N3BC5
	5/64	.15	0	235	235	235	235	235	235	—	—	180	—	180	Nitrile	11	10	S302GF02N3BC7
	3/32	.20	0	150	150	150	150	150	150	—	—	180	—	180	Nitrile	11	10	S302GF02N3BC9
	7/64	.25	0	125	125	125	125	125	125	—	—	180	—	180	Nitrile	11	10	S302GF02N3BD3
	1/8	.30	0	100	100	100	100	100	100	—	—	180	—	180	Nitrile	11	10	S302GF02N3BD5
	5/32	.43	0	60	60	60	60	60	60	—	—	180	—	180	Nitrile	11	10	S302GF02N3BD7
3/16	.65	0	40	40	40	40	40	40	—	—	180	—	180	Nitrile	11	10	S302GF02N3BE1	
1/4	1/32	.03	0	2400	2400	2400	2400	2400	2400	—	—	230	—	230	Viton	11	10	S302GF02V3BC1
	3/64	.05	0	600	600	600	600	600	600	—	—	230	—	230	Viton	11	10	S302GF02V3BC3
	1/16	.10	0	325	325	325	325	325	325	—	—	230	—	230	Viton	11	10	S302GF02V3BC5
	5/64	.15	0	235	235	235	235	235	235	—	—	230	—	230	Viton	11	10	S302GF02V3BC7
	3/32	.20	0	150	150	150	150	150	150	—	—	230	—	230	Viton	11	10	S302GF02V3BC9
	7/64	.25	0	125	125	125	125	125	125	—	—	230	—	230	Viton	11	10	S302GF02V3BD3
	1/8	.30	0	100	100	100	100	100	100	—	—	230	—	230	Viton	11	10	S302GF02V3BD5
	5/32	.43	0	60	60	60	60	60	60	—	—	230	—	230	Viton	11	10	S302GF02V3BD7
3/16	.65	0	40	40	40	40	40	40	—	—	230	—	230	Viton	11	10	S302GF02V3BE1	

\* Class H Coil Recommended for Steam and Other High Temperature Applications

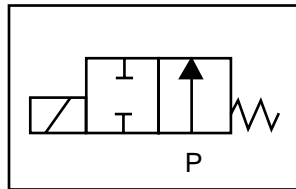
GC Valves Customer Service: 800-828-0484 (7:30am to 4pm ET) or 800-582-4232 (7:30am to 4pm PT)

# S302 – 1/4" NPT, Stainless Steel Body, Normally Open

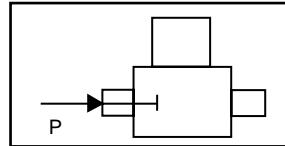


## Valve Selection List

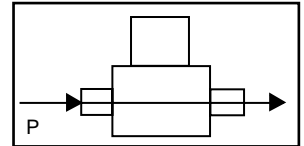
Normally Open



Energized



De-Energized



Pipe Size NPT	Orifice Size in.	C <sub>v</sub>	Minimum	Operating Pressure Differential (psi)								Max Fluid Temp. °F	Seal Material	Power Consumption (Watts)		Model Code (120V/60HZ — 110V/50HZ Shown)
				Maximum										AC	DC	
				Air/Gas		Water		Light Oil		Steam*						
				AC	DC	AC	DC	AC	DC	AC	DC			AC	DC	AC
1/4	1/32	.03	0	2400	2400	2400	2400	2400	2400	150*	150*	366	Rulon	11	10	S302GF02R3BC1
	3/64	.05	0	600	600	600	600	600	600	150*	150*	366	Rulon	11	10	S302GF02R3BC3
	1/16	.10	0	325	325	325	325	325	325	150*	150*	366	Rulon	11	10	S302GF02R3BC5
	5/64	.15	0	235	235	235	235	235	235	150*	150*	366	Rulon	11	10	S302GF02R3BC7
	3/32	.20	0	150	150	150	150	150	150	150*	150*	366	Rulon	11	10	S302GF02R3BC9
	7/64	.25	0	125	125	125	125	125	125	125*	125*	366	Rulon	11	10	S302GF02R3BD3
	1/8	.30	0	100	100	100	100	100	100	100*	100*	366	Rulon	11	10	S302GF02R3BD5
	5/32	.43	0	60	60	60	60	60	60	60*	60*	366	Rulon	11	10	S302GF02R3BD7
3/16	.65	0	40	40	40	40	40	40	40*	40*	366	Rulon	11	10	S302GF02R3BE1	
1/4	1/32	.03	0	2400	2400	2400	2400	2400	2400	150*	150*	366	Teflon	11	10	S302GF02T3BC1
	3/64	.05	0	600	600	600	600	600	600	150*	150*	366	Teflon	11	10	S302GF02T3BC3
	1/16	.10	0	325	325	325	325	325	325	150*	150*	366	Teflon	11	10	S302GF02T3BC5
	5/64	.15	0	235	235	235	235	235	235	150*	150*	366	Teflon	11	10	S302GF02T3BC7
	3/32	.20	0	150	150	150	150	150	150	150*	150*	366	Teflon	11	10	S302GF02T3BC9
	7/64	.25	0	125	125	125	125	125	125	125*	125*	366	Teflon	11	10	S302GF02T3BD3
	1/8	.30	0	100	100	100	100	100	100	100*	100*	366	Teflon	11	10	S302GF02T3BD5
	5/32	.43	0	60	60	60	60	60	60	60*	60*	366	Teflon	11	10	S302GF02T3BD7
3/16	.65	0	40	40	40	40	40	40	40*	40*	366	Teflon	11	10	S302GF02T3BE1	

\* Class H Coil Recommended for Steam and Other High Temperature Applications



# S302 – 1/4" NPT, Stainless Steel Body, Normally Open

## Part Numbering

1	2	3	4	5	6	7	8	9	10	11	12	13
<b>S</b>	<b>3</b>	<b>0</b>	<b>2</b>	<b>G</b>	<b>F</b>	<b>0</b>	<b>2</b>	<b>C</b>	<b>3</b>	<b>B</b>	<b>C</b>	<b>1</b>
Series			Operating Mode	Housing*	Coil Class*	Voltage*		Seal Material	Body Material	Pipe Connection	Orifice Size	
S30			2: Normally Open	G: Conduit	F: Class F H: Class H	02: 120/60 110/50		C: EPR N: Nitrile V: Viton R: Rulon T: Teflon	3: Stainless Steel	B: 1/4" NPT	C1: 1/32" C3: 3/64" C5: 1/16" C9: 3/32" D5: 1/8" E1: 3/16"	
* See the "Engineering Guide" for additional voltages, variations and options.												

## Coil Data

Coil Family	
Type	Size
All	S4

Frequency (Hz)	60	50
Nominal Power (VA)	Inrush	46
	Holding	22

GC Valves Customer Service: 800-828-0484 (7:30am to 4pm ET) or 800-582-4232 (7:30am to 4pm PT)

- **High Pressure**
- **1/4" NPT**
- **Stainless Steel Body**
- **2-Way Piloted Piston**
- **Normally Open**

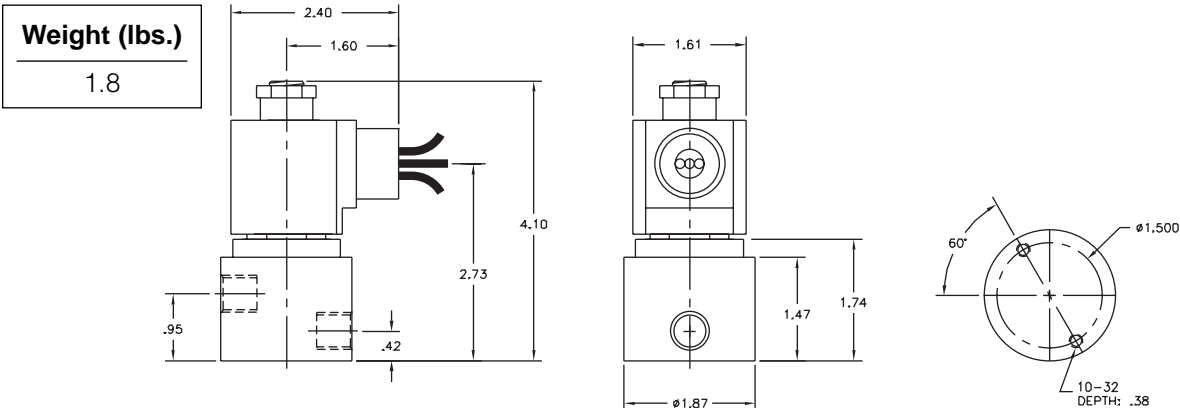


Materials	Seals:	Viton® and Teflon®
	Orifice: Pilot Main	Stainless Steel Stainless Steel Ø 3/8"
Electrical	Standard Housing:	Encapsulated Waterproof Conduit (NEMA 4/4X)
	Optional Housings:	Metallic Conduit, Explosion-proof (NEMA 7), Grommet, Open Frame, Junction Box (single or dual knockouts), DIN; Contact GC Valves Customer Service for others.
	Standard Voltages:	24, 120, 240 AC 60 Hz; 50 Hz available 6, 12, 24 DC; Contact GC Valves Customer Service for Additional Voltages.
	Voltage Tolerance:	±10% of applicable voltage
	Coil Classes:	F, H, N
	Standard Lead Length:	24 inch
Operating Temperature	Ambient (Nominal):	32°F to 125°F
Mounting	Position:	Any
Approvals*	Agency:	UL Recognized

\* Not available for all variations

© Registered Trademark of DuPont Co.

## Dimensions/Weight



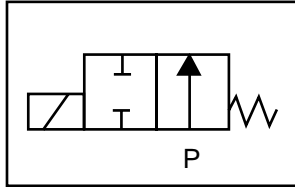
**GC Valves Customer Service: 800-828-0484 (7:30am to 4pm ET) or 800-582-4232 (7:30am to 4pm PT)**



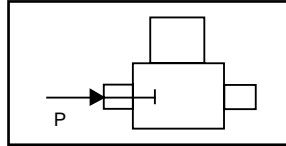
# H402 – High Pressure, 1/4" NPT, Stainless Steel Body, Normally Open

## Valve Selection List

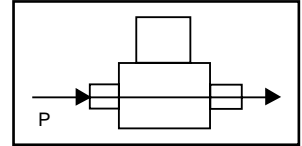
Normally Open



Energized



De-Energized



Pipe Size NPT	Orifice Size IN	C <sub>v</sub>	Minimum	Operating Pressure Differential (psi)						Max Fluid Temp. °F	Seal Material	Power Consumption (Watts)		Model Code ( 120V/60HZ — 110V/50HZ Shown )
				Maximum								AC	DC	
				Air/Gas		Water		Light Oil						
				AC	DC	AC	DC	AC	DC			AC	DC	
1/4	3/8	.8	0	2200	2200	2200	2200	2200	2200	230	Viton/ Teflon	10	10	H402GF02Z1BF5
													Stainless Steel Body	

## Part Numbering

1	2	3	4	5	6	7	8	9	10	11	12	13
<b>H</b>	<b>4</b>	<b>0</b>	<b>2</b>	<b>G</b>	<b>F</b>	<b>0</b>	<b>2</b>	<b>Z</b>	<b>1</b>	<b>B</b>	<b>F</b>	<b>5</b>
Series			Operating Mode	Housing*	Coil Class*	Voltage*		Seal Material	Body Material	Pipe Connection	Orifice Size	
H40			2: Normally Open	G: Conduit	F: Class F	02: 120/60 110/50		Z: Viton/ Teflon	1: Stainless Steel	B: 1/4" NPT	F5: 3/8"	
* See the "Engineering Guide" for additional voltages, variations and options.												

## Coil Data

Coil Family	
Type	Size
All	S4

Frequency (Hz)	60	50
Nominal Power (VA)	Inrush	46
	Holding	21

GC Valves Customer Service: 800-828-0484 (7:30am to 4pm ET) or 800-582-4232 (7:30am to 4pm PT)