

1/8" NPT Brass Body 2-Way Direct Acting Normally Open



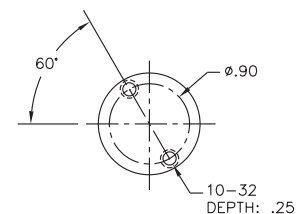
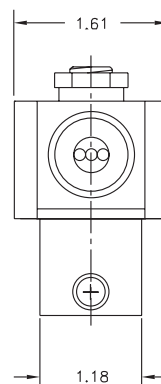
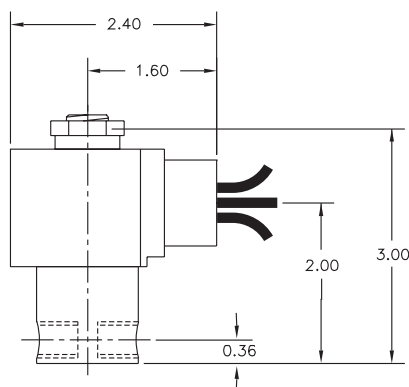
Materials	Seals:	Nitrile, Viton®, Ethylene Propylene, Teflon®, Rulon
	Orifice:	Stainless Steel
Electrical	Standard Housing:	Encapsulated Waterproof Conduit (NEMA 4/4X)
	Optional Housings:	Metallic Conduit, Explosion-proof (NEMA 7), Grommet, Open Frame, Junction Box (single or dual knockouts), DIN; Contact GC Valves Customer Service for others.
	Standard Voltages:	24, 120, 240 AC 60 Hz; 50 Hz available 6, 12, 24 DC; Contact GC Valves Customer Service for Additional Voltages.
	Voltage Tolerance:	±10% of applicable voltage
	Coil Classes:	F, H, N
	Standard Lead Length:	24 inch
Operating Temperature	Ambient (Nominal):	32°F to 125°F
Mounting	Position:	Any
Approvals*	Agency:	UL Listed, UL Recognized, CSA Approved

* Not available for all variations

© Registered Trademark of DuPont Co.

Dimensions/Weight

Weight (lbs.)
0.9

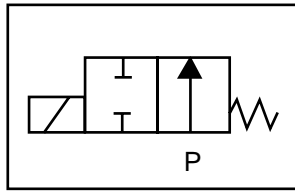




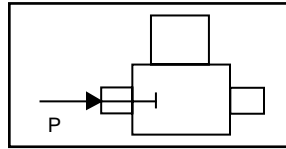
S312 – 1/8" NPT, Brass Body, Normally Open

Valve Selection List

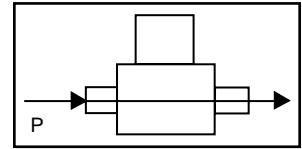
Normally Open



Energized



De-Energized



Pipe Size NPT	Orifice Size in.	C _v	Minimum	Operating Pressure Differential (psi)								Max Fluid Temp. °F	Seal Material	Power Consumption (Watts)		Model Code (120V/60HZ — 110V/50HZ Shown)		
				Maximum										AC	DC			
				Air/Gas		Water		Light Oil		Steam*								
				AC	DC	AC	DC	AC	DC	AC	DC			AC	DC	AC	DC	Brass Body
1/8	1/32	.03	0	2000	2000	2000	2000	2000	2000	—	—	150*	150*	295	EPR	AC	AC	S312GF02C8AC1
	3/64	.05	0	350	350	350	350	350	350	—	—	150*	150*	295	EPR	8	9	S312GF02C8AC3
	1/16	.10	0	200	200	200	200	200	200	—	—	150*	150*	295	EPR	8	9	S312GF02C8AC5
	5/64	.15	0	140	140	140	140	140	140	—	—	140*	140*	295	EPR	8	9	S312GF02C8AC7
	3/32	.20	0	105	105	105	105	105	105	—	—	105*	105*	295	EPR	8	9	S312GF02C8AC9
	7/64	.25	0	80	80	80	80	80	80	—	—	80*	80*	295	EPR	8	9	S312GF02C8AD3
	1/8	.30	0	60	60	60	60	60	60	—	—	60*	60*	295	EPR	8	9	S312GF02C8AD5
	5/32	.43	0	45	45	45	45	45	45	—	—	45*	45*	295	EPR	8	9	S312GF02C8AD7
3/16	.65	0	30	30	30	30	30	30	—	—	30*	30*	295	EPR	8	9	S312GF02C8AE1	
1/8	1/32	.03	0	2000	2000	2000	2000	2000	2000	—	—	180	Nitrile	8	9	S312GF02N8AC1		
	3/64	.05	0	350	350	350	350	350	350	—	—	180	Nitrile	8	9	S312GF02N8AC3		
	1/16	.10	0	200	200	200	200	200	200	—	—	180	Nitrile	8	9	S312GF02N8AC5		
	5/64	.15	0	140	140	140	140	140	140	—	—	180	Nitrile	8	9	S312GF02N8AC7		
	3/32	.20	0	105	105	105	105	105	105	—	—	180	Nitrile	8	9	S312GF02N8AC9		
	7/64	.25	0	80	80	80	80	80	80	—	—	180	Nitrile	8	9	S312GF02N8AD3		
	1/8	.30	0	60	60	60	60	60	60	—	—	180	Nitrile	8	9	S312GF02N8AD5		
	5/32	.43	0	45	45	45	45	45	45	—	—	180	Nitrile	8	9	S312GF02N8AD7		
3/16	.65	0	30	30	30	30	30	30	—	—	180	Nitrile	8	9	S312GF02N8AE1			
1/8	1/32	.03	0	2000	2000	2000	2000	2000	2000	—	—	230	Viton	8	9	S312GF02V8AC1		
	3/64	.05	0	350	350	350	350	350	350	—	—	230	Viton	8	9	S312GF02V8AC3		
	1/16	.10	0	200	200	200	200	200	200	—	—	230	Viton	8	9	S312GF02V8AC5		
	5/64	.15	0	140	140	140	140	140	140	—	—	230	Viton	8	9	S312GF02V8AC7		
	3/32	.20	0	105	105	105	105	105	105	—	—	230	Viton	8	9	S312GF02V8AC9		
	7/64	.25	0	80	80	80	80	80	80	—	—	230	Viton	8	9	S312GF02V8AD3		
	1/8	.30	0	60	60	60	60	60	60	—	—	230	Viton	8	9	S312GF02V8AD5		
	5/32	.43	0	45	45	45	45	45	45	—	—	230	Viton	8	9	S312GF02V8AD7		
3/16	.65	0	30	30	30	30	30	30	—	—	230	Viton	8	9	S312GF02V8AE1			

* Class H Coil Recommended for Steam and Other High Temperature Applications

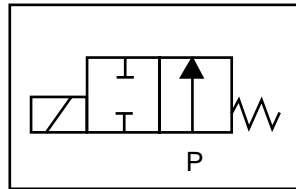
GC Valves Customer Service: 800-828-0484 (7:30am to 4pm ET) or 800-582-4232 (7:30am to 4pm PT)

S312 – 1/8" NPT, Brass Body, Normally Open

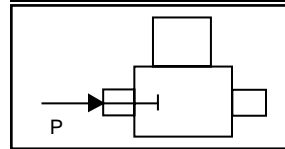


Valve Selection List

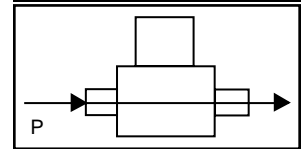
Normally Open



Energized



De-Energized



Pipe Size NPT	Orifice Size in.	C _v	Minimum	Operating Pressure Differential (psi)								Max Fluid Temp. °F	Seal Material	Power Consumption (Watts)		Model Code (120V/60HZ — 110V/50HZ Shown)
				Maximum										AC	DC	
				Air/Gas		Water		Light Oil		Steam*						
				AC	DC	AC	DC	AC	DC	AC	DC			AC	DC	Brass Body
1/8	1/32	.03	0	2000	2000	2000	2000	2000	2000	150*	150*	366	Rulon	8	9	S312GF02R8AC1
	3/64	.05	0	350	350	350	350	350	350	150*	150*	366	Rulon	8	9	S312GF02R8AC3
	1/16	.10	0	200	200	200	200	200	200	150*	150*	366	Rulon	8	9	S312GF02R8AC5
	5/64	.15	0	140	140	140	140	140	140	140*	140*	366	Rulon	8	9	S312GF02R8AC7
	3/32	.20	0	105	105	105	105	105	105	105*	105*	366	Rulon	8	9	S312GF02R8AC9
	7/64	.25	0	80	80	80	80	80	80	80*	80*	366	Rulon	8	9	S312GF02R8AD3
	1/8	.30	0	60	60	60	60	60	60	60*	60*	366	Rulon	8	9	S312GF02R8AD5
	5/32	.43	0	45	45	45	45	45	45	45*	45*	366	Rulon	8	9	S312GF02R8AD7
3/16	.65	0	30	30	30	30	30	30	30*	30*	366	Rulon	8	9	S312GF02R8AE1	
1/8	1/32	.03	0	2000	2000	2000	2000	2000	2000	150*	150*	366	Teflon	8	9	S312GF02T8AC1
	3/64	.05	0	350	350	350	350	350	350	150*	150*	366	Teflon	8	9	S312GF02T8AC3
	1/16	.10	0	200	200	200	200	200	200	150*	150*	366	Teflon	8	9	S312GF02T8AC5
	5/64	.15	0	140	140	140	140	140	140	140*	140*	366	Teflon	8	9	S312GF02T8AC7
	3/32	.22	0	105	105	105	105	105	105	105*	105*	366	Teflon	8	9	S312GF02T8AC9
	7/64	.25	0	80	80	80	80	80	80	80*	80*	366	Teflon	8	9	S312GF02T8AD3
	1/8	.30	0	60	60	60	60	60	60	60*	60*	366	Teflon	8	9	S312GF02T8AD5
	5/32	.43	0	45	45	45	45	45	45	45*	45*	366	Teflon	8	9	S312GF02T8AD7
3/16	.65	0	30	30	30	30	30	30	30*	30*	366	Teflon	8	9	S312GF02T8AE1	

* Class H Coil Recommended for Steam and Other High Temperature Applications



S312 – 1/8" NPT, Brass Body, Normally Open

Part Numbering

1	2	3	4	5	6	7	8	9	10	11	12	13
S	3	1	2	G	F	0	2	C	8	A	C	1
Series			Operating Mode	Housing*	Coil Class*	Voltage*		Seal Material	Body Material	Pipe Connection	Orifice Size	
S31			2: Normally Open	G: Conduit	F: Class F H: Class H	02: 120/60 110/50		C: EPR N: Nitrile V: Viton R: Rulon T: Teflon	8: Brass	A: 1/8" NPT	C1: 1/32" C3: 3/64" C5: 1/16" C9: 3/32" D5: 1/8" E1: 3/16"	
* See the "Engineering Guide" for additional voltages, variations and options.												

Coil Data

Coil Family	
Type	Size
All	S3

Frequency (Hz)	60	50
Nominal Power (VA)	Inrush	36
	Holding	18

1/8" NPT Brass Body 2-Way Direct Acting Normally Open



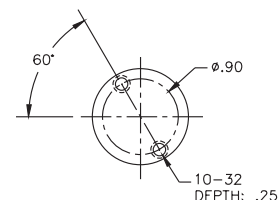
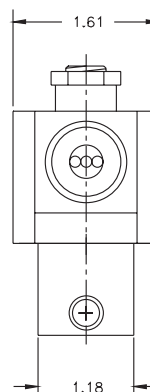
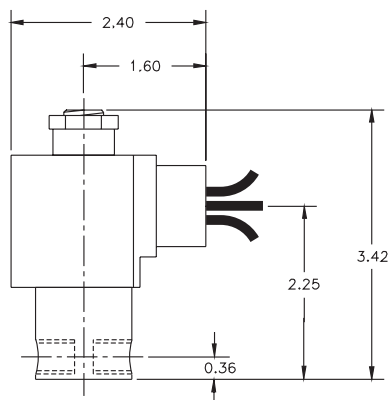
Materials	Seals:	Nitrile, Viton®, Ethylene Propylene, Teflon®, Rulon
	Orifice:	Stainless Steel
Electrical	Standard Housing:	Encapsulated Waterproof Conduit (NEMA 4/4X)
	Optional Housings:	Metallic Conduit, Explosion-proof (NEMA 7), Grommet, Open Frame, Junction Box (single or dual knockouts), DIN; Contact GC Valves Customer Service for others.
	Standard Voltages:	24, 120, 240 AC 60 Hz; 50 Hz available 6, 12, 24 DC; Contact GC Valves Customer Service for Additional Voltages.
	Voltage Tolerance:	±10% of applicable voltage
	Coil Classes:	F, H, N
	Standard Lead Length:	24 inch
Operating Temperature	Ambient (Nominal):	32°F to 125°F
Mounting	Position:	Any
Approvals*	Agency:	UL Listed, UL Recognized, CSA Approved

* Not available for all variations

© Registered Trademark of DuPont Co.

Dimensions/Weight

Weight (lbs.)
1.1



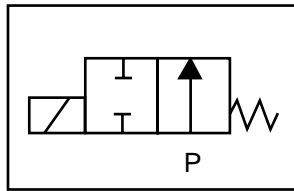
GC Valves Customer Service: 800-828-0484 (7:30am to 4pm ET) or 800-582-4232 (7:30am to 4pm PT)



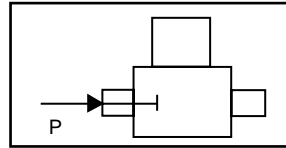
S302 – 1/8" NPT, Brass Body, Normally Open

Valve Selection List

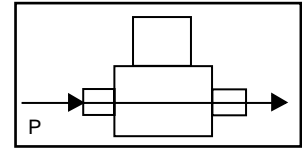
Normally Open



Energized



De-Energized



Pipe Size NPT	Orifice Size in.	C _v	Minimum	Operating Pressure Differential (psi)								Max Fluid Temp. °F	Seal Material	Power Consumption (Watts)		Model Code (120V/60HZ — 110V/50HZ Shown)
				Maximum										AC	DC	
				Air/Gas		Water		Light Oil		Steam*						
				AC	DC	AC	DC	AC	DC	AC	DC			AC	DC	AC
1/8	1/32	.03	0	2400	2400	2400	2400	—	—	150*	150*	295	EPR	11	10	S302GF02C8AC1
	3/64	.05	0	600	600	600	600	—	—	150*	150*	295	EPR	11	10	S302GF02C8AC3
	1/16	.10	0	325	325	325	325	—	—	150*	150*	295	EPR	11	10	S302GF02C8AC5
	5/64	.15	0	235	235	235	235	—	—	150*	150*	295	EPR	11	10	S302GF02C8AC7
	3/32	.20	0	150	150	150	150	—	—	150*	150*	295	EPR	11	10	S302GF02C8AC9
	7/64	.25	0	125	125	125	125	—	—	125*	125*	295	EPR	11	10	S302GF02C8AD3
	1/8	.30	0	100	100	100	100	—	—	100*	100*	295	EPR	11	10	S302GF02C8AD5
	5/32	.43	0	60	60	60	60	—	—	60*	60*	295	EPR	11	10	S302GF02C8AD7
3/16	.65	0	40	40	40	40	—	—	40*	40*	295	EPR	11	10	S302GF02C8AE1	
1/8	1/32	.03	0	2400	2400	2400	2400	2400	2400	—	—	180	Nitrile	11	10	S302GF02N8AC1
	3/64	.05	0	600	600	600	600	600	600	—	—	180	Nitrile	11	10	S302GF02N8AC3
	1/16	.10	0	325	325	325	325	325	325	—	—	180	Nitrile	11	10	S302GF02N8AC5
	5/64	.15	0	235	235	235	235	235	235	—	—	180	Nitrile	11	10	S302GF02N8AC7
	3/32	.20	0	150	150	150	150	150	150	—	—	180	Nitrile	11	10	S302GF02N8AC9
	7/64	.25	0	125	125	125	125	125	125	—	—	180	Nitrile	11	10	S302GF02N8AD3
	1/8	.30	0	100	100	100	100	100	100	—	—	180	Nitrile	11	10	S302GF02N8AD5
	5/32	.43	0	60	60	60	60	60	60	—	—	180	Nitrile	11	10	S302GF02N8AD7
3/16	.65	0	40	40	40	40	40	40	—	—	180	Nitrile	11	10	S302GF02N8AE1	
1/8	1/32	.03	0	2400	2400	2400	2400	2400	2400	—	—	230	Viton	11	10	S302GF02V8AC1
	3/64	.05	0	600	600	600	600	600	600	—	—	230	Viton	11	10	S302GF02V8AC3
	1/16	.10	0	325	325	325	325	325	325	—	—	230	Viton	11	10	S302GF02V8AC5
	5/64	.15	0	235	235	235	235	235	235	—	—	230	Viton	11	10	S302GF02V8AC7
	3/32	.20	0	150	150	150	150	150	150	—	—	230	Viton	11	10	S302GF02V8AC9
	7/64	.25	0	125	125	125	125	125	125	—	—	230	Viton	11	10	S302GF02V8AD3
	1/8	.30	0	100	100	100	100	100	100	—	—	230	Viton	11	10	S302GF02V8AD5
	5/32	.43	0	60	60	60	60	60	60	—	—	230	Viton	11	10	S302GF02V8AD7
3/16	.65	0	40	40	40	40	40	40	—	—	230	Viton	11	10	S302GF02V8AE1	

* Class H Coil Recommended for Steam and Other High Temperature Applications

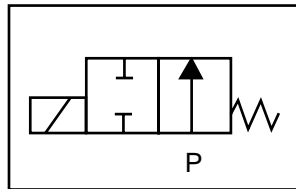
GC Valves Customer Service: 800-828-0484 (7:30am to 4pm ET) or 800-582-4232 (7:30am to 4pm PT)

S302 – 1/8" NPT, Brass Body, Normally Open

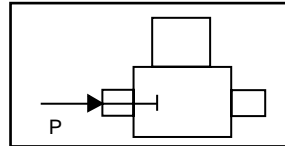


Valve Selection List

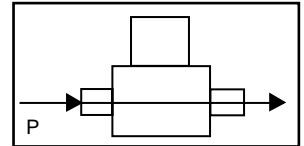
Normally Open



Energized



De-Energized



Pipe Size NPT	Orifice Size in.	C _v	Minimum	Operating Pressure Differential (psi)								Max Fluid Temp. °F	Seal Material	Power Consumption (Watts)		Model Code (120V/60HZ — 110V/50HZ Shown)
				Maximum										AC	DC	
				Air/Gas		Water		Light Oil		Steam*						
				AC	DC	AC	DC	AC	DC	AC	DC			AC	DC	AC
1/8	1/32	.03	0	2400	2400	2400	2400	2400	2400	150*	150*	366	Rulon	11	10	S302GF02R8AC1
	3/64	.05	0	600	600	600	600	600	600	150*	150*	366	Rulon	11	10	S302GF02R8AC3
	1/16	.10	0	325	325	325	325	325	325	150*	150*	366	Rulon	11	10	S302GF02R8AC5
	7/64	.15	0	235	235	235	235	235	235	150*	150*	366	Rulon	11	10	S302GF02R8AC7
	3/32	.20	0	150	150	150	150	150	150	150*	150*	366	Rulon	11	10	S302GF02R8AC9
	7/64	.25	0	125	125	125	125	125	125	125*	125*	366	Rulon	11	10	S302GF02R8AD3
	1/8	.30	0	100	100	100	100	100	100	100*	100*	366	Rulon	11	10	S302GF02R8AD5
	5/32	.43	0	60	60	60	60	60	60	60*	60*	366	Rulon	11	10	S302GF02R8AD7
3/16	.65	0	40	40	40	40	40	40	40*	40*	366	Rulon	11	10	S302GF02R8AE1	
1/8	1/32	.03	0	2400	2400	2400	2400	2400	2400	150*	150*	366	Teflon	11	10	S302GF02T8AC1
	3/64	.05	0	600	600	600	600	600	600	150*	150*	366	Teflon	11	10	S302GF02T8AC3
	1/16	.10	0	325	325	325	325	325	325	150*	150*	366	Teflon	11	10	S302GF02T8AC5
	5/64	.15	0	235	235	235	235	235	235	150*	150*	366	Teflon	11	10	S302GF02T8AC7
	3/32	.20	0	150	150	150	150	150	150	150*	150*	366	Teflon	11	10	S302GF02T8AC9
	7/64	.25	0	125	125	125	125	125	125	125*	125*	366	Teflon	11	10	S302GF02T8AD3
	1/8	.30	0	100	100	100	100	100	100	100*	100*	366	Teflon	11	10	S302GF02T8AD5
	5/32	.43	0	60	60	60	60	60	60	60*	60*	366	Teflon	11	10	S302GF02T8AD7
3/16	.65	0	40	40	40	40	40	40	40*	40*	366	Teflon	11	10	S302GF02T8AE1	

* Class H Coil Recommended for Steam and Other High Temperature Applications



S302 – 1/8" NPT, Brass Body, Normally Open

Part Numbering

1	2	3	4	5	6	7	8	9	10	11	12	13
S	3	0	2	G	F	0	2	C	8	A	C	1
Series			Operating Mode	Housing*	Coil Class*	Voltage*		Seal Material	Body Material	Pipe Connection	Orifice Size	
S30			2: Normally Open	G: Conduit	F: Class F H: Class H	02: 120/60 110/50		C: EPR N: Nitrile V: Viton R: Rulon T: Teflon	8: Brass	A: 1/8" NPT	C1: 1/32" C3: 3/64" C5: 1/16" C9: 3/32" D5: 1/8" E1: 3/16"	
* See the "Engineering Guide" for additional voltages, variations and options.												

Coil Data

Coil Family	
Type	Size
All	S4

Frequency (Hz)	60	50
Nominal Power (VA)	Inrush	46
	Holding	22

1/8" NPT Stainless Steel 2-Way Direct Acting Normally Open



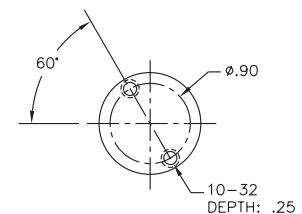
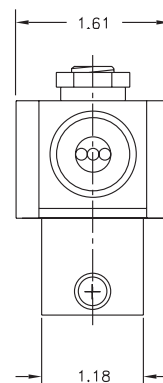
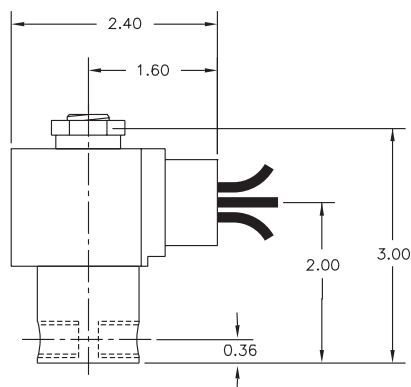
Materials	Seals:	Nitrile, Viton®, Ethylene Propylene, Teflon®, Rulon
	Orifice:	Stainless Steel
Electrical	Standard Housing:	Encapsulated Waterproof Conduit (NEMA 4/4X)
	Optional Housings:	Metallic Conduit, Explosion-proof (NEMA 7), Grommet, Open Frame, Junction Box (single or dual knockouts), DIN; Contact GC Valves Customer Service for others.
	Standard Voltages:	24, 120, 240 AC 60 Hz; 50 Hz available 6, 12, 24 DC; Contact GC Valves Customer Service for Additional Voltages.
	Voltage Tolerance:	±10% of applicable voltage
	Coil Classes:	F, H, N
	Standard Lead Length:	24 inch
Operating Temperature	Ambient (Nominal):	32°F to 125°F
Mounting	Position:	Any
Approvals*	Agency:	UL Listed, UL Recognized, CSA Approved

* Not available for all variations

© Registered Trademark of DuPont Co.

Dimensions/Weight

Weight (lbs.)
0.9



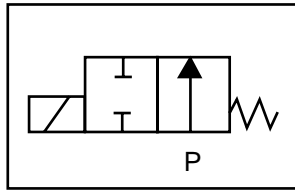
GC Valves Customer Service: 800-828-0484 (7:30am to 4pm ET) or 800-582-4232 (7:30am to 4pm PT)



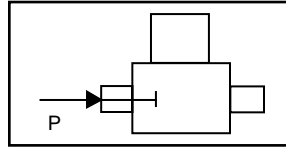
S312 – 1/8" NPT, Stainless Steel Body, Normally Open

Valve Selection List

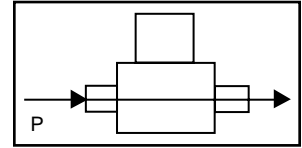
Normally Open



Energized



De-Energized



Pipe Size NPT	Orifice Size in.	C _v	Operating Pressure Differential (psi)										Max Fluid Temp. °F	Seal Material	Power Consumption (Watts)		Model Code (120V/60HZ — 110V/50HZ) Shown
			Maximum												AC	DC	
			Air/Gas		Water		Light Oil		Steam*		AC	DC					
			AC	DC	AC	DC	AC	DC	AC	DC							AC
1/8	1/32	.03	0	2000	2000	2000	2000	—	—	150*	150*	295	EPR	8	9	S312GF02C2AC1	
	3/64	.05	0	350	350	350	350	—	—	150*	150*	295	EPR	8	9	S312GF02C2AC3	
	1/16	.10	0	200	200	200	200	—	—	150*	150*	295	EPR	8	9	S312GF02C2AC5	
	5/64	.15	0	140	140	140	140	—	—	140*	140*	295	EPR	8	9	S312GF02C2AC7	
	3/32	.22	0	105	105	105	105	—	—	105*	105*	295	EPR	8	9	S312GF02C2AC9	
	7/64	.25	0	80	80	80	80	—	—	80*	80*	295	EPR	8	9	S312GF02C2AD3	
	1/8	.30	0	60	60	60	60	—	—	60*	60*	295	EPR	8	9	S312GF02C2AD5	
	3/16	.65	0	30	30	30	30	—	—	30*	30*	295	EPR	8	9	S312GF02C2AE1	
1/8	1/32	.03	0	2000	2000	2000	2000	—	—	—	—	180	Nitrile	8	9	S312GF02N2AC1	
	3/64	.05	0	350	350	350	350	350	—	—	—	180	Nitrile	8	9	S312GF02N2AC3	
	1/16	.10	0	200	200	200	200	200	—	—	—	180	Nitrile	8	9	S312GF02N2AC5	
	5/64	.15	0	140	140	140	140	140	—	—	—	180	Nitrile	8	9	S312GF02N2AC7	
	3/32	.22	0	105	105	105	105	105	—	—	—	180	Nitrile	8	9	S312GF02N2AC9	
	7/64	.25	0	80	80	80	80	80	—	—	—	180	Nitrile	8	9	S312GF02N2AD3	
	1/8	.30	0	60	60	60	60	60	—	—	—	180	Nitrile	8	9	S312GF02N2AD5	
	3/16	.65	0	30	30	30	30	30	—	—	—	180	Nitrile	8	9	S312GF02N2AE1	
1/8	1/32	.03	0	2000	2000	2000	2000	2000	2000	—	—	230	Viton	8	9	S312GF02V2AC1	
	3/64	.05	0	350	350	350	350	350	350	—	—	230	Viton	8	9	S312GF02V2AC3	
	1/16	.10	0	200	200	200	200	200	200	—	—	230	Viton	8	9	S312GF02V2AC5	
	5/64	.15	0	140	140	140	140	140	140	—	—	230	Viton	8	9	S312GF02V2AC7	
	3/32	.22	0	105	105	105	105	105	105	—	—	230	Viton	8	9	S312GF02V2AC9	
	7/64	.25	0	80	80	80	80	80	80	—	—	230	Viton	8	9	S312GF02V2AD3	
	1/8	.30	0	60	60	60	60	60	60	—	—	230	Viton	8	9	S312GF02V2AD5	
	3/16	.65	0	30	30	30	30	30	30	—	—	230	Viton	8	9	S312GF02V2AE1	
1/8	1/32	.03	0	2000	2000	2000	2000	2000	2000	150*	150*	366	Rulon	8	9	S312GF02R2AC1	
	3/64	.05	0	350	350	350	350	350	350	150*	150*	366	Rulon	8	9	S312GF02R2AC3	
	1/16	.10	0	200	200	200	200	200	200	150*	150*	366	Rulon	8	9	S312GF02R2AC5	
	5/64	.15	0	140	140	140	140	140	140	150*	150*	366	Rulon	8	9	S312GF02R2AC7	
	3/32	.22	0	105	105	105	105	105	105	150*	150*	366	Rulon	8	9	S312GF02R2AC9	
	7/64	.25	0	40	40	40	40	40	40	40*	40*	366	Rulon	8	9	S312GF02R2AD3	
	1/8	.30	0	60	60	60	60	60	60	60*	60*	366	Rulon	8	9	S312GF02R2AD5	
	3/16	.65	0	30	30	30	30	30	30	30*	30*	366	Rulon	8	9	S312GF02R2AE1	
1/8	1/32	.03	0	2000	2000	2000	2000	2000	2000	150*	150*	366	Teflon	8	9	S312GF02T2AC1	
	3/64	.05	0	600	600	600	600	600	600	150*	150*	366	Teflon	8	9	S312GF02T2AC3	
	1/16	.10	0	200	200	200	200	200	200	150*	150*	366	Teflon	8	9	S312GF02T2AC5	
	5/64	.15	0	140	140	140	140	140	140	140*	140*	366	Teflon	8	9	S312GF02T2AC7	
	3/32	.22	0	105	105	105	105	105	105	150*	150*	366	Teflon	8	9	S312GF02T2AC9	
	7/64	.25	0	80	80	80	80	80	80	80*	80	366	Teflon	8	9	S312GF02T2AD3	
	1/8	.30	0	60	60	60	60	60	60	60*	60*	366	Teflon	8	9	S312GF02T2AD5	
	3/16	.65	0	30	30	30	30	30	30	30*	30*	366	Teflon	8	9	S312GF02T2AE1	

* Class H Coil Recommended for Steam and Other High Temperature Applications

GC Valves Customer Service: 800-828-0484 (7:30am to 4pm ET) or 800-582-4232 (7:30am to 4pm PT)

S312 – 1/8" NPT, Stainless Steel Body, Normally Open



Part Numbering

1	2	3	4	5	6	7	8	9	10	11	12	13
S	3	1	2	G	F	0	2	V	2	A	C	1
Series			Operating Mode	Housing*	Coil Class*	Voltage*		Seal Material	Body Material	Pipe Connection	Orifice Size	
S31			2: Normally Open	G: Conduit	F: Class F H: Class H	02: 120/60 110/50		C: EPR N: Nitrile V: Viton R: Rulon T: Teflon	2: Stainless Steel	A: 1/8" NPT	C1: 1/32" C3: 3/64" C5: 1/16" C9: 3/32" D5: 1/8" E1: 3/16"	
* See the "Engineering Guide" for additional voltages, variations and options.												

Coil Data

Coil Family	
Type	Size
All	S3

Frequency (Hz)	60	50	
Nominal Power (VA)	Inrush	36	36
	Holding	18	19

1/8" NPT Stainless Steel Body 2-Way Direct Acting Normally Open



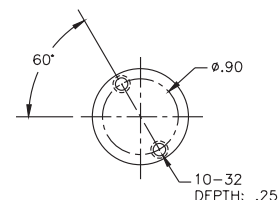
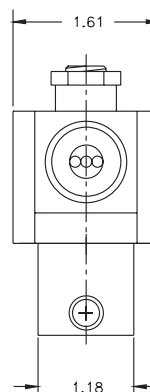
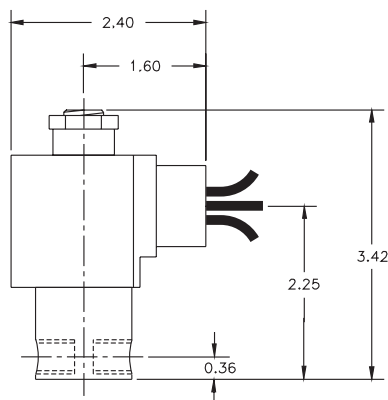
Materials	Seals:	Nitrile, Viton®, Ethylene Propylene, Teflon®, Rulon
	Orifice:	Stainless Steel
Electrical	Standard Housing:	Encapsulated Waterproof Conduit (NEMA 4/4X)
	Optional Housings:	Metallic Conduit, Explosion-proof (NEMA 7), Grommet, Open Frame, Junction Box (single or dual knockouts), DIN; Contact GC Valves Customer Service for others.
	Standard Voltages:	24, 120, 240 AC 60 Hz; 50 Hz available 6, 12, 24 DC; Contact GC Valves Customer Service for Additional Voltages.
	Voltage Tolerance:	±10% of applicable voltage
	Coil Classes:	F, H, N
	Standard Lead Length:	24 inch
Operating Temperature	Ambient (Nominal):	32°F to 125°F
Mounting	Position:	Any
Approvals*	Agency:	UL Listed, UL Recognized, CSA Approved

* Not available for all variations

© Registered Trademark of DuPont Co.

Dimensions/Weight

Weight (lbs.)
1.1



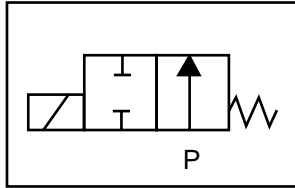
GC Valves Customer Service: 800-828-0484 (7:30am to 4pm ET) or 800-582-4232 (7:30am to 4pm PT)



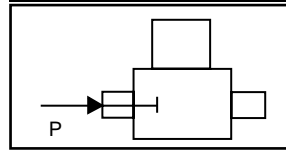
S302 – 1/8" NPT, Stainless Steel Body, Normally Open

Valve Selection List

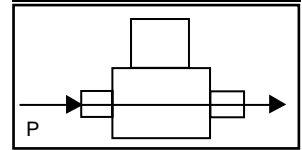
Normally Open



Energized



De-Energized



Pipe Size NPT	Orifice Size in.	C _v	Minimum	Operating Pressure Differential (psi)								Max Fluid Temp. °F	Seal Material	Power Consumption (Watts)		Model Code (120V/60HZ — 110V/50HZ Shown)
				Maximum										AC	DC	
				Air/Gas		Water		Light Oil		Steam*						
				AC	DC	AC	DC	AC	DC	AC	DC			AC	DC	Stainless Steel Body
1/8	1/32	.03	0	2400	2400	2400	2400	—	—	150*	150*	295	EPR	11	10	S302GF02C2AC1
	3/64	.05	0	600	600	600	600	—	—	150*	150*	295	EPR	11	10	S302GF02C2AC3
	1/16	.10	0	325	325	325	325	—	—	150*	150*	295	EPR	11	10	S302GF02C2AC5
	5/64	.15	0	235	235	2235	235	—	—	150*	150*	295	EPR	11	10	S302GF02C2AC7
	3/32	.20	0	150	150	150	150	—	—	150*	150*	295	EPR	11	10	S302GF02C2AC9
	7/64	.25	0	125	125	125	125	—	—	125*	125*	295	EPR	11	10	S302GF02C2AD3
	1/8	.30	0	100	100	100	100	—	—	100*	100*	295	EPR	11	10	S302GF02C2AD5
	5/32	.43	0	60	60	60	60	—	—	60*	60*	295	EPR	11	10	S302GF02C2AD7
3/16	.65	0	40	40	40	40	—	—	40*	40*	295	EPR	11	10	S302GF02C2AE1	
1/8	1/32	.03	0	2400	2400	2400	2400	2400	2400	—	—	180	Nitrile	11	10	S302GF02N2AC1
	3/64	.05	0	600	600	600	600	600	600	—	—	180	Nitrile	11	10	S302GF02N2AC3
	1/16	.10	0	325	325	325	325	325	325	—	—	180	Nitrile	11	10	S302GF02N2AC5
	5/64	.15	0	235	235	235	235	235	235	—	—	180	Nitrile	11	10	S302GF02N2AC7
	3/32	.20	0	150	150	150	150	150	150	—	—	180	Nitrile	11	10	S302GF02N2AC9
	7/64	.25	0	125	125	125	125	125	125	—	—	180	Nitrile	11	10	S302GF02N2AD3
	1/8	.30	0	100	100	100	100	100	100	—	—	180	Nitrile	11	10	S302GF02N2AD5
	5/32	.43	0	60	60	60	60	60	60	—	—	180	Nitrile	11	10	S302GF02N2AD7
3/16	.65	0	40	40	40	40	40	40	—	—	180	Nitrile	11	10	S302GF02N2AE1	
1/8	1/32	.03	0	2400	2400	2400	2400	2400	2400	—	—	230	Viton	11	10	S302GF02V2AC1
	3/64	.05	0	600	600	600	600	600	600	—	—	230	Viton	11	10	S302GF02V2AC3
	1/16	.10	0	325	325	325	325	325	325	—	—	230	Viton	11	10	S302GF02V2AC5
	5/64	.15	0	235	235	235	235	235	235	—	—	230	Viton	11	10	S302GF02V2AC7
	3/32	.20	0	150	150	150	150	150	150	—	—	230	Viton	11	10	S302GF02V2AC9
	7/64	.25	0	125	125	125	125	125	125	—	—	230	Viton	11	10	S302GF02V2AD3
	1/8	.30	0	100	100	100	100	100	100	—	—	230	Viton	11	10	S302GF02V2AD5
	5/32	.43	0	60	60	60	60	60	60	—	—	230	Viton	11	10	S302GF02V2AD7
3/16	.65	0	40	40	40	40	40	40	—	—	230	Viton	11	10	S302GF02V2AE1	

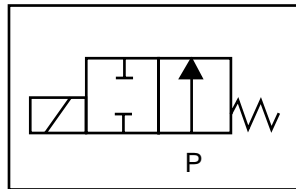
* Class H Coil Recommended for Steam and Other High Temperature Applications

S302 – 1/8" NPT, Stainless Steel Body, Normally Open

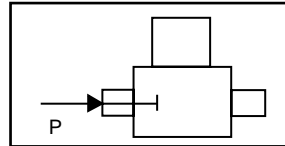


Valve Selection List

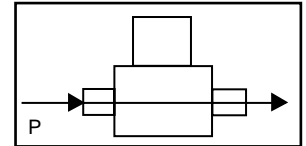
Normally Open



Energized



De-Energized



Pipe Size NPT	Orifice Size in.	C _v	Minimum	Operating Pressure Differential (psi)								Max Fluid Temp. °F	Seal Material	Power Consumption (Watts)		Model Code (120V/60HZ — 110V/50HZ Shown)
				Maximum										AC	DC	
				Air/Gas		Water		Light Oil		Steam*						
				AC	DC	AC	DC	AC	DC	AC	DC			AC	DC	AC
1/8	1/32	.03	0	2400	2400	2400	2400	2400	2400	150*	150*	366	Rulon	11	10	S302GF02R2AC1
	3/64	.05	0	600	600	600	600	600	600	150*	150*	366	Rulon	11	10	S302GF02R2AC3
	1/16	.10	0	325	325	325	325	325	325	150*	150*	366	Rulon	11	10	S302GF02R2AC5
	7/64	.15	0	235	235	235	235	235	235	150*	150*	366	Rulon	11	10	S302GF02R2AC7
	3/32	.20	0	150	150	150	150	150	150	150*	150*	366	Rulon	11	10	S302GF02R2AC9
	7/64	.25	0	125	125	125	125	125	125	125*	125*	366	Rulon	11	10	S302GF02R2AD3
	1/8	.30	0	100	100	100	100	100	100	100*	100*	366	Rulon	11	10	S302GF02R2AD5
	5/32	.43	0	60	60	60	60	60	60	60*	60*	366	Rulon	11	10	S302GF02R2AD7
3/16	.65	0	40	40	40	40	40	40	40*	40*	366	Rulon	11	10	S302GF02R2AE1	
1/8	1/32	.03	0	2400	2400	2400	2400	2400	2400	150*	150*	366	Teflon	11	10	S302GF02T2AC1
	3/64	.05	0	600	600	600	600	600	600	150*	150*	366	Teflon	11	10	S302GF02T2AC3
	1/16	.10	0	325	325	325	325	325	325	150*	150*	366	Teflon	11	10	S302GF02T2AC5
	5/64	.15	0	235	235	235	235	235	235	150*	150*	366	Teflon	11	10	S302GF02T2AC7
	3/32	.20	0	150	150	150	150	150	150	150*	150*	366	Teflon	11	10	S302GF02T2AC9
	7/64	.25	0	125	125	125	125	125	125	125*	125*	366	Teflon	11	10	S302GF02T2AD3
	1/8	.30	0	100	100	100	100	100	100	100*	100*	366	Teflon	11	10	S302GF02T2AD5
	5/32	.43	0	60	60	60	60	60	60	60*	60*	366	Teflon	11	10	S302GF02T2AD7
3/16	.65	0	40	40	40	40	40	40	40*	40*	366	Teflon	11	10	S302GF02T2AE1	

* Class H Coil Recommended for Steam and Other High Temperature Applications



S302 – 1/8" NPT, Stainless Steel Body, Normally Open

Part Numbering

1	2	3	4	5	6	7	8	9	10	11	12	13
S	3	0	2	G	F	0	2	C	2	A	C	1
Series			Operating Mode	Housing*	Coil Class*	Voltage*		Seal Material	Body Material	Pipe Connection	Orifice Size	
S30			2: Normally Open	G: Conduit	F: Class F H: Class H	02: 120/60 110/50		C: EPR N: Nitrile V: Viton R: Rulon T: Teflon	2: Stainless Steel	A: 1/8" NPT	C1: 1/32" C3: 3/64" C5: 1/16" C9: 3/32" D5: 1/8" E1: 3/16"	
* See the "Engineering Guide" for additional voltages, variations and options.												

Coil Data

Coil Family	
Type	Size
All	S4

Frequency (Hz)	60	50
Nominal Power (VA)	Inrush	46
	Holding	22