

S30 Series



- 1/8" NPT
- Brass Body
- 2-Way Direct Acting
- Normally Closed



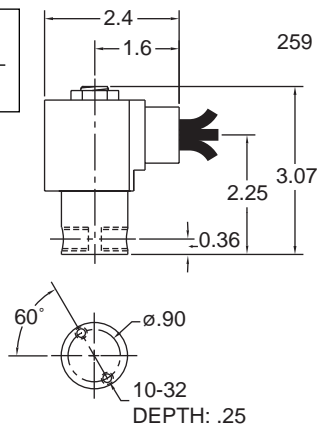
Materials	Seals:	Nitrile, Viton®, Ethylene Propylene, Teflon®, Rulon
	Orifice:	Stainless Steel
Electrical	Standard Housing:	Encapsulated Waterproof Conduit (NEMA 4/4X)
	Optional Housings:	Metallic Conduit, Explosion-proof (NEMA 7), Grommet, Open Frame, Junction Box (single or dual knockouts), DIN; Contact GC Valves Customer Service for others.
	Standard Voltages:	24, 120, 240 AC 60 Hz; 50 Hz available 6, 12, 24 DC; Contact GC Valves Customer Service for Additional Voltages.
	Voltage Tolerance:	±10% of applicable voltage
	Coil Classes:	F, H, N
	Standard Lead Length:	24 inch
Operating Temperature	Ambient (Nominal):	32°F to 125°F
Mounting	Position:	Any
Approvals*	Agency:	UL Safety Shut-off, UL Listed, UL Recognized, CSA Approved, FM Certified

* Not available for all variations

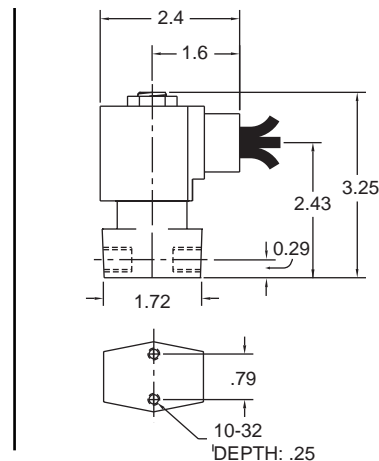
® Registered Trademark of DuPont Co.

Dimensions/Weight

Weight (lbs.)
1.1



Body Code: 8



Body Code: 9

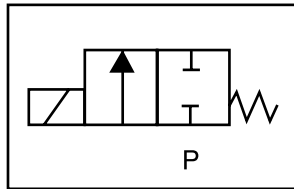
GC Valves Customer Service: 800-828-0484 (7:30am to 4pm ET) or 800-582-4232 (7:30am to 4pm PT)



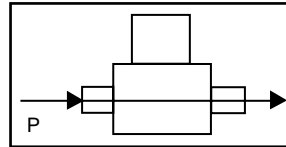
S301 – 1/8" NPT, Brass Body, Normally Closed

Valve Selection List

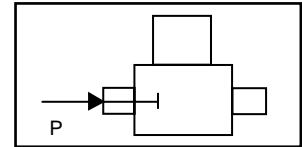
Normally Closed



Energized



De-Energized



Pipe Size NPT	Orifice Size in.	C _v	Minimum	Operating Pressure Differential (psi)								Max Fluid Temp. °F	Seal Material	Power Consumption (Watts)		Model Code (120V/60HZ – 110V/50HZ Shown)
				Maximum										AC	DC	
				Air/Gas		Water		Light Oil		Steam*						
				AC	DC	AC	DC	AC	DC	AC	DC			Brass Body		
1/8	1/32	.03	0	2400	2400	2400	2400	—	—	150*	150*	295	EPR	10	10	S301GF02C8AC1
	3/64	.05	0	1050	1000	1050	1000	—	—	150*	150*	295	EPR	10	10	S301GF02C8AC3
	1/16	.10	0	700	300	700	300	—	—	150*	150*	295	EPR	10	10	S301GF02C8AC5
	5/64	.15	0	550	240	550	240	—	—	150*	150*	295	EPR	10	10	S301GF02C8AC7
	3/32	.21	0	450	200	450	200	—	—	150*	150*	295	EPR	10	10	S301GF02C8AC9
	7/64	.29	0	350	170	350	170	—	—	150*	150*	295	EPR	10	10	S301GF02C8AD3
	1/8	.36	0	200	140	200	140	—	—	150*	140*	295	EPR	10	10	S301GF02C8AD5
	5/32	.44	0	150	100	150	100	—	—	150*	100*	295	EPR	10	10	S301GF02C8AD7
	3/16	.65	0	100	70	100	70	—	—	100*	70*	295	EPR	10	10	S301GF02C8AE1
	1/4	.85	0	50	20	50	20	—	—	50*	20*	295	EPR	10	10	S301GF02C8AE7
	3/8	1.0	0	20	5	20	5	—	—	20*	5*	295	EPR	10	10	S301GF02C9AF5
1/8	1/32	.03	0	2400	2400	2400	2400	2400	2400	—	—	180	Nitrile	10	10	S301GF02N8AC1
	3/64	.05	0	1050	1000	1050	1000	1050	1000	—	—	180	Nitrile	10	10	S301GF02N8AC3
	1/16	.10	0	700	300	700	300	700	300	—	—	180	Nitrile	10	10	S301GF02N8AC5
	5/64	.15	0	550	240	550	240	550	240	—	—	180	Nitrile	10	10	S301GF02N8AC7
	3/32	.21	0	450	200	450	200	450	200	—	—	180	Nitrile	10	10	S301GF02N8AC9
	7/64	.29	0	350	170	350	170	350	170	—	—	180	Nitrile	10	10	S301GF02N8AD3
	1/8	.36	0	200	140	200	140	200	140	—	—	180	Nitrile	10	10	S301GF02N8AD5
	5/32	.44	0	150	100	150	100	150	100	—	—	180	Nitrile	10	10	S301GF02N8AD7
	3/16	.65	0	100	70	100	70	100	70	—	—	180	Nitrile	10	10	S301GF02N8AE1
	1/4	.85	0	50	20	50	20	50	20	—	—	180	Nitrile	10	10	S301GF02N8AE7
	3/8	1.0	0	20	5	20	5	20	5	—	—	180	Nitrile	10	10	S301GF02N9AF5
1/8	1/32	.03	0	2400	2400	2400	2400	2400	2400	—	—	230	Viton	10	10	S301GF02V8AC1
	3/64	.05	0	1050	1000	1050	1000	1050	1000	—	—	230	Viton	10	10	S301GF02V8AC3
	1/16	.10	0	700	300	700	300	700	300	—	—	230	Viton	10	10	S301GF02V8AC5
	5/64	.15	0	550	240	550	240	550	240	—	—	230	Viton	10	10	S301GF02V8AC7
	3/32	.21	0	450	200	450	200	450	200	—	—	230	Viton	10	10	S301GF02V8AC9
	7/64	.29	0	350	170	350	170	350	170	—	—	230	Viton	10	10	S301GF02V8AD3
	1/8	.36	0	200	140	200	140	200	140	—	—	230	Viton	10	10	S301GF02V8AD5
	5/32	.44	0	150	100	150	100	150	100	—	—	230	Viton	10	10	S301GF02V8AD7
	3/16	.65	0	100	70	100	70	100	70	—	—	230	Viton	10	10	S301GF02V8AE1
	1/4	.85	0	50	20	50	20	50	20	—	—	230	Viton	10	10	S301GF02V8AE7
	3/8	1.0	0	20	5	20	5	20	5	—	—	230	Viton	10	10	S301GF02V9AF5

* Class H Coil Recommended for Steam and Other High Temperature Applications

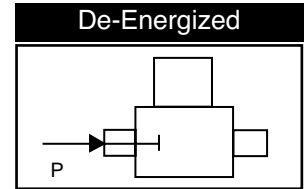
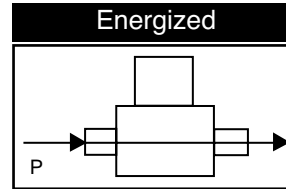
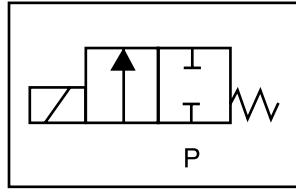
GC Valves Customer Service: 800-828-0484 (7:30am to 4pm ET) or 800-582-4232 (7:30am to 4pm PT)

S301 – 1/8" NPT, Brass Body, Normally Closed



Valve Selection List

Normally Closed



Pipe Size NPT	Orifice Size in.	C _v	Minimum	Operating Pressure Differential (psi)								Max Fluid Temp. °F	Seal Material	Power Consumption (Watts)		Model Code (120V/60HZ – 110V/50HZ) Shown
				Maximum										AC	DC	
				Air/Gas		Water		Light Oil		Steam*						
				AC	DC	AC	DC	AC	DC	AC	DC			AC	DC	Brass Body
1/8	1/32	.03	0	2400	2400	2400	2400	2400	2400	150*	150*	366	Rulon	10	10	S301GF02R8AC1
	3/64	.05	0	1050	1000	1050	1000	1050	1000	150*	150*	366	Rulon	10	10	S301GF02R8AC3
	1/16	.10	0	700	300	700	300	700	300	150*	150*	366	Rulon	10	10	S301GF02R8AC5
	5/64	.15	0	550	240	550	240	550	240	150*	150*	366	Rulon	10	10	S301GF02R8AC7
	3/32	.21	0	450	200	450	200	450	200	150*	150*	366	Rulon	10	10	S301GF02R8AC9
	7/64	.29	0	350	170	350	170	350	170	150*	150*	366	Rulon	10	10	S301GF02R8AD3
	1/8	.36	0	200	140	200	140	200	140	150*	140*	366	Rulon	10	10	S301GF02R8AD5
	5/32	.44	0	150	100	150	100	150	100	150*	100*	366	Rulon	10	10	S301GF02R8AD7
	3/16	.65	0	100	70	100	70	100	70	100*	70*	366	Rulon	10	10	S301GF02R8AE1
	1/4	.85	0	50	20	50	20	50	20	50*	20*	366	Rulon	10	10	S301GF02R8AE7
	9/32	1.0	0	35	15	35	15	35	15	35"	15*	366	Rulon	10	10	S301GF02R9AF1
3/8	1.0	0	20	5	20	5	20	5	20*	5*	366	Rulon	10	10	S301GF02R9AF5	
1/8	1/32	.03	0	2400	2400	2400	2400	2400	2400	150*	150*	366	Teflon	10	10	S301GF02T8AC1
	3/64	.05	0	1050	1000	1050	1000	1050	1000	150*	150*	366	Teflon	10	10	S301GF02T8AC3
	1/16	.10	0	700	300	700	300	700	300	150*	150*	366	Teflon	10	10	S301GF02T8AC5
	5/64	.15	0	550	240	550	240	550	240	150*	150*	366	Teflon	10	10	S301GF02T8AC7
	3/32	.21	0	450	200	450	200	450	200	150*	150*	366	Teflon	10	10	S301GF02T8AC9
	7/64	.29	0	350	170	350	170	350	170	150*	150*	366	Teflon	10	10	S301GF02T8AD3
	1/8	.36	0	200	140	200	140	200	140	150*	140*	366	Teflon	10	10	S301GF02T8AD5
	5/32	.44	0	150	100	150	100	150	100	150*	100*	366	Teflon	10	10	S301GF02T8AD7
	3/16	.65	0	100	70	100	70	100	70	100*	70*	366	Teflon	10	10	S301GF02T8AE1
	1/4	.85	0	50	20	50	20	50	20	50*	20*	366	Teflon	10	10	S301GF02T8AE7
	9/32	1.0	0	35	15	35	15	35	15	35"	15*	366	Teflon	10	10	S301GF02T9AF1
3/8	1.0	0	20	5	20	5	20	5	20*	5*	366	Teflon	10	10	S301GF02T9AF5	

* Class H Coil Recommended for Steam and Other High Temperature Applications



S301 – 1/8" NPT, Brass Body, Normally Closed

Part Numbering

1	2	3	4	5	6	7	8	9	10	11	12	13
S	3	0	1	G	F	0	2	C	8	A	C	1
Series			Operating Mode	Housing*	Coil Class*	Voltage*		Seal Material	Body Material	Pipe Connection	Orifice Size	
S30			1: Normally Closed	G: Conduit	F: Class F H: Class H	02: 120/60 110/50		C: EPR N: Nitrile V: Viton R: Rulon T: Teflon	8: Brass 9: Forged Brass	A: 1/8" NPT	C1: 1/32" C3: 3/64" C5: 1/16" C7: 5/64" C9: 3/32" D3: 7/64" D5: 1/8" D7: 5/32" E1: 3/16" E7: 1/4" F1: 9/32" F5: 3/8"	

* See the "Engineering Guide" for additional voltages, variations and options.

®Brass

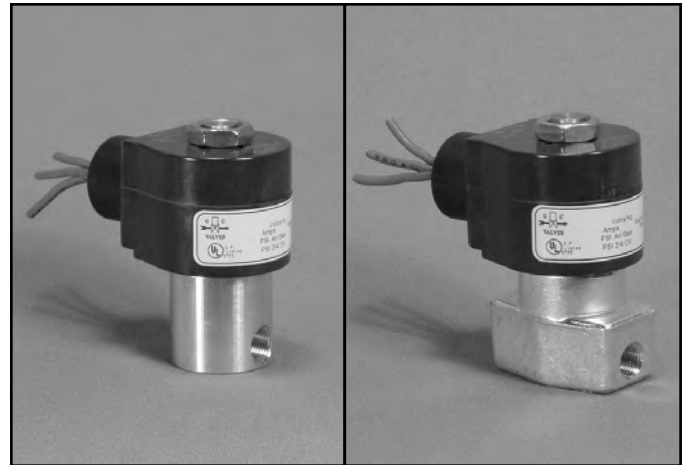
Coil Data

Coil Family	
Type	Size
All	S4

Frequency (Hz)	60	50
Nominal Power (VA)	Inrush	46
	Holding	18

GC Valves Customer Service: 800-828-0484 (7:30am to 4pm ET) or 800-582-4232 (7:30am to 4pm PT)

1/8" NPT Brass Body 2-Way Direct Acting Normally Closed



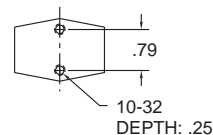
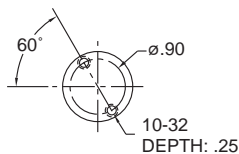
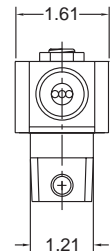
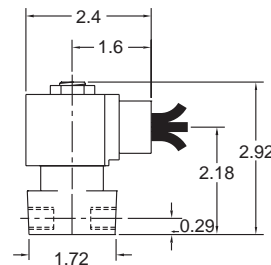
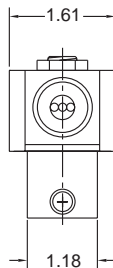
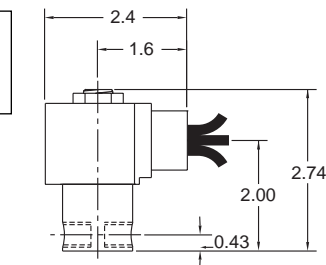
Materials	Seals:	Nitrile, Viton®, Ethylene Propylene, Teflon®, Rulon
	Orifice:	Stainless Steel
Electrical	Standard Housing:	Encapsulated Waterproof Conduit (NEMA 4/4X)
	Optional Housings:	Metallic Conduit, Explosion-proof (NEMA 7), Grommet, Open Frame, Junction Box (single or dual knockouts), DIN; Contact GC Valves Customer Service for others.
	Standard Voltages:	24, 120, 240 AC 60 Hz; 50 Hz available 6, 12, 24 DC; Contact GC Valves Customer Service for Additional Voltages.
	Voltage Tolerance:	±10% of applicable voltage
	Coil Classes:	F, H, N
	Standard Lead Length:	24 inch
Operating Temperature	Ambient (Nominal):	32°F to 125°F
Mounting	Position:	Any
Approvals*	Agency:	UL Safety Shutoff, UL Listed, UL Recognized, CSA Approved, FM Certified

* Not available for all variations

© Registered Trademark of DuPont Co.

Dimensions/Weight

Weight (lbs.)
0.9



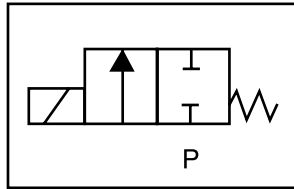
GC Valves Customer Service: 800-828-0484 (7:30am to 4pm ET) or 800-582-4232 (7:30am to 4pm PT)



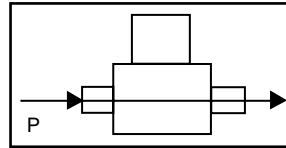
S311 – 1/8" NPT, Brass Body, Normally Closed

Valve Selection List

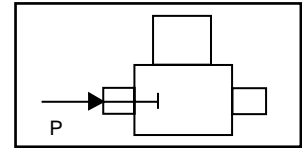
Normally Closed



Energized



De-Energized



Pipe Size NPT	Orifice Size in.	C _v	Operating Pressure Differential (psi)										Max Fluid Temp. °F	Seal Material	Power Consumption (Watts)		Model Code (120V/60HZ — 110V/50HZ Shown)	
			Maximum												AC	DC		Brass Body
			Air/Gas		Water		Light Oil		Steam*		AC	DC						
			AC	DC	AC	DC	AC	DC	AC	DC							AC	DC
1/8	1/32	.03	0	2000	2000	2000	2000	2000	2000	—	—	150*	150*	295	EPR	8	9	S311GF02C8AC1
	3/64	.05	0	770	420	770	420	—	—	—	—	150*	150*	295	EPR	8	9	S311GF02C8AC3
	1/16	.10	0	560	185	560	185	—	—	—	—	150*	150*	295	EPR	8	9	S311GF02C8AC5
	5/64	.15	0	400	150	400	150	—	—	—	—	150*	150*	295	EPR	8	9	S311GF02C8AC7
	3/32	.21	0	300	130	300	130	—	—	—	—	150*	130*	295	EPR	8	9	S311GF02C8AC9
	7/64	.29	0	210	90	210	90	—	—	—	—	150*	90*	295	EPR	8	9	S311GF02C8AD3
	1/8	.32	0	155	60	155	60	—	—	—	—	150*	60*	295	EPR	8	9	S311GF02C8AD5
	5/32	.43	0	105	35	105	35	—	—	—	—	105*	35*	295	EPR	8	9	S311GF02C8AD7
	3/16	.49	0	75	20	75	20	—	—	—	—	75*	20*	295	EPR	8	9	S311GF02C8AE1
	1/4	.85	0	35	15	35	15	—	—	—	—	35*	15*	295	EPR	8	9	S311GF02C9AE7
	9/32	1.0	0	20	10	20	10	—	—	—	—	20*	10*	295	EPR	8	9	S311GF02C9AF1
3/8	1.1	0	15	5	15	5	—	—	—	—	15*	5*	295	EPR	8	9	S311GF02C9AF5	
1/8	1/32	.03	0	2000	2000	2000	2000	2000	2000	—	—	180	Nitrile	8	9	S311GF02N8AC1		
	3/64	.05	0	770	420	770	420	770	420	—	—	180	Nitrile	8	9	S311GF02N8AC3		
	1/16	.10	0	560	185	560	185	560	185	—	—	180	Nitrile	8	9	S311GF02N8AC5		
	5/64	.15	0	400	150	400	150	400	150	—	—	180	Nitrile	8	9	S311GF02N8AC7		
	3/32	.21	0	300	130	300	130	300	130	—	—	180	Nitrile	8	9	S311GF02N8AC9		
	7/64	.29	0	210	90	210	90	210	90	—	—	180	Nitrile	8	9	S311GF02N8AD3		
	1/8	.32	0	155	60	155	60	155	60	—	—	180	Nitrile	8	9	S311GF02N8AD5		
	5/32	.43	0	105	35	105	35	105	35	—	—	180	Nitrile	8	9	S311GF02N8AD7		
	3/16	.49	0	75	20	75	20	75	20	—	—	180	Nitrile	8	9	S311GF02N8AE1		
	1/4	.85	0	35	15	35	15	35	15	—	—	180	Nitrile	8	9	S311GF02N9AE7		
	9/32	1.0	0	20	10	20	10	20	10	—	—	180	Nitrile	8	9	S311GF02N9AF1		
3/8	1.1	0	15	5	15	5	15	5	—	—	180	Nitrile	8	9	S311GF02N9AF5			
1/8	1/32	.03	0	2000	2000	2000	2000	2000	2000	—	—	230	Viton	8	9	S311GF02V8AC1		
	3/64	.05	0	770	420	770	420	770	420	—	—	230	Viton	8	9	S311GF02V8AC3		
	1/16	.10	0	560	185	560	185	560	185	—	—	230	Viton	8	9	S311GF02V8AC5		
	5/64	.15	0	400	150	400	150	400	150	—	—	230	Viton	8	9	S311GF02V8AC7		
	3/32	.21	0	300	130	300	130	300	130	—	—	230	Viton	8	9	S311GF02V8AC9		
	7/64	.29	0	210	90	210	90	210	90	—	—	230	Viton	8	9	S311GF02V8AD3		
	1/8	.32	0	155	60	155	60	155	60	—	—	230	Viton	8	9	S311GF02V8AD5		
	5/32	.43	0	105	35	105	35	105	35	—	—	230	Viton	8	9	S311GF02V8AD7		
	3/16	.49	0	75	20	75	20	75	20	—	—	230	Viton	8	9	S311GF02V8AE1		
	1/4	.85	0	35	15	35	15	35	15	—	—	230	Viton	8	9	S311GF02V9AE7		
	9/32	1.0	0	20	10	20	10	20	10	—	—	230	Viton	8	9	S311GF02V9AF1		
3/8	1.1	0	15	5	15	5	15	5	—	—	230	Viton	8	9	S311GF02V9AF5			

* Class H Coil Recommended for Steam and Other High Temperature Applications

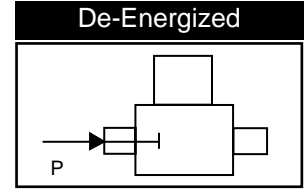
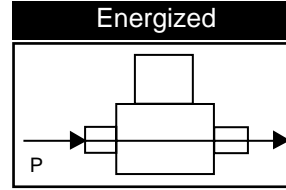
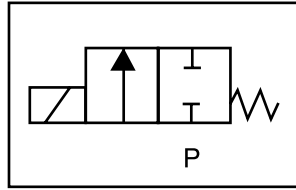
GC Valves Customer Service: 800-828-0484 (7:30am to 4pm ET) or 800-582-4232 (7:30am to 4pm PT)

S311 – 1/8" NPT, Brass Body, Normally Closed



Valve Selection List

Normally Closed



Pipe Size NPT	Orifice Size in.	C _v	Minimum	Operating Pressure Differential (psi)								Max Fluid Temp. °F	Seal Material	Power Consumption (Watts)		Model Code (120V/60HZ — 110V/50HZ Shown)
				Maximum										AC	DC	
				Air/Gas		Water		Light Oil		Steam*						
				AC	DC	AC	DC	AC	DC	AC	DC					
1/8	1/32	.03	0	2000	2000	2000	2000	2000	2000	150*	150*	366	Rulon	8	9	S311GF02R8AC1
	3/64	.05	0	770	420	770	420	770	420	150*	150*	366	Rulon	8	9	S311GF02R8AC3
	1/16	.10	0	560	185	560	185	560	185	150*	150*	366	Rulon	8	9	S311GF02R8AC5
	5/64	.15	0	400	150	400	150	400	150	150*	150*	366	Rulon	8	9	S311GF02R8AC7
	3/32	.21	0	300	130	300	130	300	130	150*	130*	366	Rulon	8	9	S311GF02R8AC9
	7/64	.29	0	210	90	210	90	210	90	150*	90*	366	Rulon	8	9	S311GF02R8AD3
	1/8	.32	0	155	60	155	60	155	60	150*	60*	366	Rulon	8	9	S311GF02R8AD5
	5/32	.43	0	105	35	105	35	105	35	105*	35*	366	Rulon	8	9	S311GF02R8AD7
	3/16	.49	0	75	20	75	20	75	20	75*	20*	366	Rulon	8	9	S311GF02R8AE1
	1/4	.85	0	35	15	35	15	35	15	35*	15*	366	Rulon	8	9	S311GF02R9AE7
	9/32	1.0	0	20	10	20	10	20	10	20*	10*	366	Rulon	8	9	S311GF02R9AF1
	3/8	1.1	0	15	5	15	5	15	5	15*	5*	366	Rulon	8	9	S311GF02R9AF5
1/8	1/32	.03	0	2000	2000	2000	2000	2000	2000	150*	150*	366	Teflon	8	9	S311GF02T8AC1
	3/64	.05	0	770	420	770	420	770	420	150*	150*	366	Teflon	8	9	S311GF02T8AC3
	1/16	.10	0	560	185	560	185	560	185	150*	150*	366	Teflon	8	9	S311GF02T8AC5
	5/64	.15	0	400	150	400	150	400	150	150*	150*	366	Teflon	8	9	S311GF02T8AC7
	3/32	.21	0	300	130	300	130	300	130	150*	130*	366	Teflon	8	9	S311GF02T8AC9
	7/64	.29	0	210	90	210	90	210	90	150*	90*	366	Teflon	8	9	S311GF02T8AD3
	1/8	.32	0	155	60	155	60	155	60	150*	60*	366	Teflon	8	9	S311GF02T8AD5
	5/32	.43	0	105	35	105	35	105	35	105*	35*	366	Teflon	8	9	S311GF02T8AD7
	3/16	.49	0	75	20	75	20	75	20	75*	20*	366	Teflon	8	9	S311GF02T8AE1
	1/4	.85	0	35	15	35	15	35	15	35*	15*	366	Teflon	8	9	S311GF02T9AE7
	9/32	1.0	0	20	10	20	10	20	10	20*	10*	366	Teflon	8	9	S311GF02T9AF1
	3/8	1.1	0	15	5	15	5	15	5	15*	5*	366	Teflon	8	9	S311GF02T9AF5

* Class H Coil Recommended for Steam and Other High Temperature Applications



S311 – 1/8" NPT, Brass Body, Normally Closed

Part Numbering

1	2	3	4	5	6	7	8	9	10	11	12	13
S	3	1	1	G	F	0	2	C	8	A	C	1
Series			Operating Mode	Housing*	Coil Class*	Voltage*		Seal Material	Body Material	Pipe Connection	Orifice Size	
S31			1: Normally Closed	G: Conduit	F: Class F H: Class H	02: 120/60 110/50		C: EPR N: Nitrile V: Viton R: Rulon T: Teflon	8: Brass 9: Forged Brass	A: 1/8" NPT	C1: 1/32" C3: 3/64" C5: 1/16" C7: 5/46" C9: 3/32" D3: 7/64" D5: 1/8" D7: 5/32" E1: 3/16" E7: 1/4" F1: 9/32" F5: 3/8"®	

* See the "Engineering Guide" for additional voltages, variations and options.

®Brass

Coil Data

Coil Family	
Type	Size
All	S3

Frequency (Hz)	60	50	
Nominal Power (VA)	Inrush	36	36
	Holding	13	14

GC Valves Customer Service: 800-828-0484 (7:30am to 4pm ET) or 800-582-4232 (7:30am to 4pm PT)

1/8" NPT Stainless Steel Body 2-Way Direct Acting Normally Closed



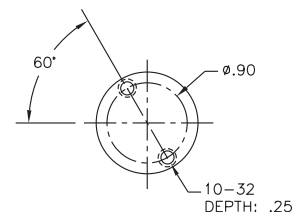
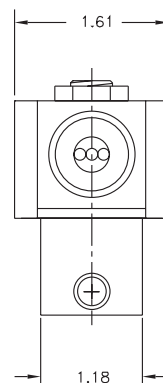
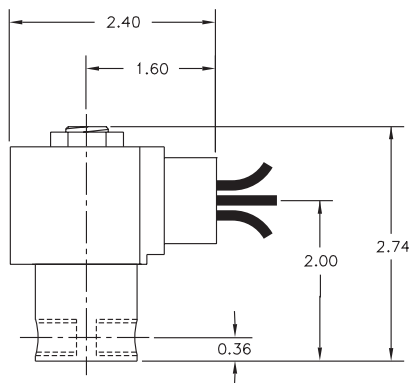
Materials	Seals:	Nitrile, Viton®, Ethylene Propylene, Teflon®, Rulon
	Orifice:	Stainless Steel
Electrical	Standard Housing:	Encapsulated Waterproof Conduit (NEMA 4/4X)
	Optional Housings:	Metallic Conduit, Explosion-proof (NEMA 7), Grommet, Open Frame, Junction Box (single or dual knockouts), DIN; Contact GC Valves Customer Service for others.
	Standard Voltages:	24, 120, 240 AC 60 Hz; 50 Hz available 6, 12, 24 DC; Contact GC Valves Customer Service for Additional Voltages.
	Voltage Tolerance:	±10% of applicable voltage
	Coil Classes:	F, H, N
	Standard Lead Length:	24 inch
Operating Temperature	Ambient (Nominal):	32°F to 125°F
Mounting	Position:	Any
Approvals*	Agency:	UL Safety Shutoff, UL Listed, UL Recognized, CSA Approved, FM Certified

* Not available for all variations

© Registered Trademark of DuPont Co.

Dimensions/Weight

Weight (lbs.)
0.9



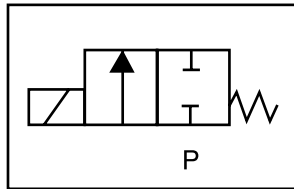
GC Valves Customer Service: 800-828-0484 (7:30am to 4pm ET) or 800-582-4232 (7:30am to 4pm PT)



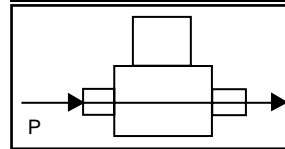
S311 – 1/8" NPT, Stainless Steel Body, Normally Closed

Valve Selection List

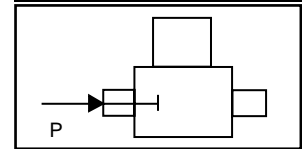
Normally Closed



Energized



De-Energized



Pipe Size NPT	Orifice Size in.	C _v	Minimum	Operating Pressure Differential (psi)								Max Fluid Temp. °F	Seal Material	Power Consumption (Watts)		Model Code (120V/60HZ — 110V/50HZ Shown)
				Maximum										AC	DC	
				Air/Gas		Water		Light Oil		Steam*						
				AC	DC	AC	DC	AC	DC	AC	DC			AC	DC	Stainless Steel Body
1/8	1/32	.03	0	2000	2000	2000	2000	—	—	150*	150*	295	EPR	8	9	S311GF02C2AC1
	3/64	.05	0	770	420	770	420	—	—	150*	150*	295	EPR	8	9	S311GF02C2AC3
	1/16	.10	0	560	185	560	185	—	—	150*	150*	295	EPR	8	9	S311GF02C2AC5
	5/64	.15	0	400	150	400	150	—	—	150*	150*	295	EPR	8	9	S311GF02C2AC7
	3/32	.21	0	300	130	300	130	—	—	150*	130*	295	EPR	8	9	S311GF02C2AC9
	7/64	.29	0	210	90	210	90	—	—	150*	90*	295	EPR	8	9	S311GF02C2AD3
	1/8	.32	0	155	60	155	60	—	—	150*	60*	295	EPR	8	9	S311GF02C2AD5
	5/32	.43	0	105	35	105	35	—	—	105*	35*	295	EPR	8	9	S311GF02C2AD7
3/16	.49	0	75	20	75	20	—	—	75*	20*	295	EPR	8	9	S311GF02C2AE1	
1/8	1/32	.03	0	2000	2000	2000	2000	2000	—	—	180	Nitrile	8	9	S311GF02N2AC1	
	3/64	.05	0	770	420	770	420	770	420	—	—	180	Nitrile	8	9	S311GF02N2AC3
	1/16	.10	0	560	185	560	185	560	185	—	—	180	Nitrile	8	9	S311GF02N2AC5
	5/94	.15	0	400	150	400	150	400	150	—	—	180	Nitrile	8	9	S311GF02N2AC7
	3/32	.21	0	300	130	300	130	300	130	—	—	180	Nitrile	8	9	S311GF02N2AC9
	7/64	.14	0	210	90	210	90	210	90	—	—	180	Nitrile	8	9	S311GF02N2AD3
	1/8	.32	0	155	60	155	60	155	60	—	—	180	Nitrile	8	9	S311GF02N2AD5
	5/32	.43	0	105	35	105	35	105	35	—	—	180	Nitrile	8	9	S311GF02N2AD7
3/16	.49	0	75	20	75	20	75	20	—	—	180	Nitrile	8	9	S311GF02N2AE1	
1/8	1/32	.03	0	2000	2000	2000	2000	2000	—	—	230	Viton	8	9	S311GF02V2AC1	
	3/64	.05	0	770	420	770	420	770	420	—	—	230	Viton	8	9	S311GF02V2AC3
	1/16	.10	0	560	185	560	185	560	185	—	—	230	Viton	8	9	S311GF02V2AC5
	5/64	.15	0	400	150	400	150	400	150	—	—	230	Viton	8	9	S311GF02V2AC7
	3/32	.21	0	300	130	300	130	300	130	—	—	230	Viton	8	9	S311GF02V2AC9
	7/64	.29	0	210	90	210	90	210	90	—	—	230	Viton	8	9	S311GF02V2AD3
	1/8	.32	0	155	60	155	60	155	60	—	—	230	Viton	8	9	S311GF02V2AD5
	5/32	.43	0	105	35	105	35	105	35	—	—	230	Viton	8	9	S311GF02V2AD7
3/16	.49	0	75	20	75	20	75	20	—	—	230	Viton	8	9	S311GF02V2AE1	

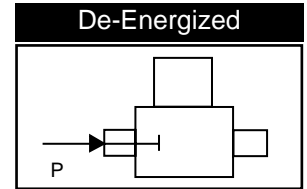
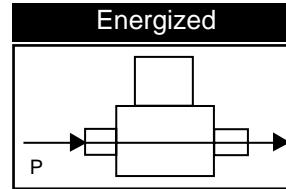
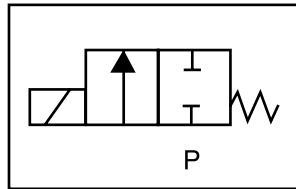
* Class H Coil Recommended for Steam and Other High Temperature Applications

S311 – 1/8" NPT, Stainless Steel Body, Normally Closed



Valve Selection List

Normally Closed



Pipe Size NPT	Orifice Size in.	C _v	Minimum	Operating Pressure Differential (psi)								Max Fluid Temp. °F	Seal Material	Power Consumption (Watts)		Model Code (120V/60HZ — 110V/50HZ) Shown
				Maximum										AC	DC	
				Air/Gas		Water		Light Oil		Steam*						
				AC	DC	AC	DC	AC	DC	AC	DC			AC	DC	
1/8	1/32	.03	0	2000	2000	2000	2000	2000	2000	150*	150*	366	Rulon	8	9	S311GF02R2AC1
	3/64	.05	0	770	420	770	420	770	420	150*	150*	366	Rulon	8	9	S311GF02R2AC3
	1/16	.10	0	560	185	560	185	560	185	150*	150*	366	Rulon	8	9	S311GF02R2AC5
	5/64	.15	0	400	150	400	150	400	150	150*	150*	366	Rulon	8	9	S311GF02R2AC7
	3/32	.21	0	300	130	300	130	300	130	150*	130*	366	Rulon	8	9	S311GF02R2AC9
	7/64	.29	0	210	90	210	90	210	90	150*	90*	366	Rulon	8	9	S311GF02R2AD3
	1/8	.32	0	155	60	155	60	155	60	150*	60*	366	Rulon	8	9	S311GF02R2AD5
	5/32	.43	0	105	35	105	35	105	35	105*	35*	366	Rulon	8	9	S311GF02R2AD7
3/16	.49	0	75	20	75	20	75	20	75*	20*	366	Rulon	8	9	S311GF02R2AE1	
1/8	1/32	.03	0	2000	2000	2000	2000	2000	2000	150*	150*	366	Teflon	8	9	S311GF02T2AC1
	3/64	.05	0	770	420	770	420	770	420	150*	150*	366	Teflon	8	9	S311GF02T2AC3
	1/16	.10	0	560	185	560	185	560	185	150*	150*	366	Teflon	8	9	S311GF02T2AC5
	5/64	.15	0	400	150	400	150	400	150	150*	150*	366	Teflon	8	9	S311GF02T2AC7
	3/32	.21	0	300	130	300	130	300	130	150*	130*	366	Teflon	8	9	S311GF02T2AC9
	7/64	.29	0	210	90	210	90	210	90	150*	90*	366	Teflon	8	9	S311GF02T2AD3
	1/8	.32	0	155	60	155	60	155	60	150*	60*	366	Teflon	8	9	S311GF02T2AD5
	5/32	.43	0	105	35	105	35	105	35	105*	35*	366	Teflon	8	9	S311GF02T2AD7
3/16	.49	0	75	20	75	20	75	20	75*	20*	366	Teflon	8	9	S311GF02T2AE1	

* Class H Coil Recommended for Steam and Other High Temperature Applications



S311 – 1/8" NPT, Stainless Steel, Normally Closed

Part Numbering

1	2	3	4	5	6	7	8	9	10	11	12	13
S	3	1	1	G	F	0	2	C	2	A	C	1
Series			Operating Mode	Housing*	Coil Class*	Voltage*		Seal Material	Body Material	Pipe Connection	Orifice Size	
S31			1: Normally Closed	G: Conduit	F: Class F H: Class H	02: 120/60 110/50		C: EPR N: Nitrile V: Viton R: Rulon T: Teflon	2: Stainless Steel	A: 1/8" NPT	C1: 1/32" C3: 3/64" C5: 1/16" C9: 5/64" C9: 3/32" D3: 7/64" D5: 1/8" D7: 5/32" E1: 3/16"	
* See the "Engineering Guide" for additional voltages, variations and options.												

Coil Data

Coil Family	
Type	Size
All	S3

Frequency (Hz)	60	50	
Nominal Power (VA)	Inrush	36	36
	Holding	13	14

1/8" NPT Stainless Steel Body 2-Way Direct Acting Normally Closed



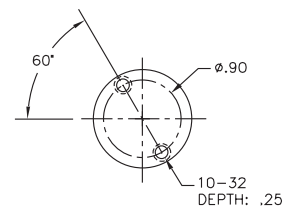
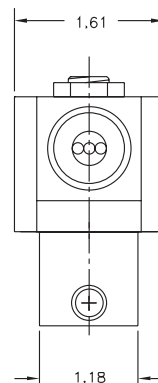
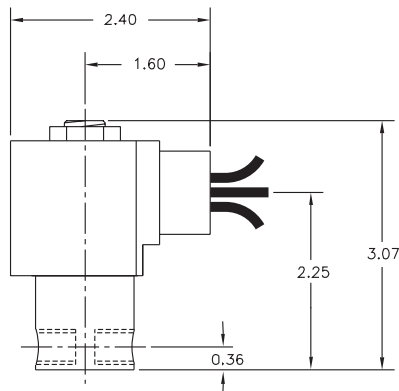
Materials	Seals:	Nitrile, Viton®, Ethylene Propylene, Teflon®, Rulon
	Orifice:	Stainless Steel
Electrical	Standard Housing:	Encapsulated Waterproof Conduit (NEMA 4/4X)
	Optional Housings:	Metallic Conduit, Explosion-proof (NEMA 7), Grommet, Open Frame, Junction Box (single or dual knockouts), DIN; Contact GC Valves Customer Service for others.
	Standard Voltages:	24, 120, 240 AC 60 Hz; 50 Hz available 6, 12, 24 DC; Contact GC Valves Customer Service for Additional Voltages.
	Voltage Tolerance:	±10% of applicable voltage
	Coil Classes:	F, H, N
	Standard Lead Length:	24 inch
Operating Temperature	Ambient (Nominal):	32°F to 125°F
Mounting	Position:	Any
Approvals*	Agency:	UL Safety Shut-off, UL Listed, UL Recognized, CSA Approved, FM Certified

* Not available for all variations

© Registered Trademark of DuPont Co.

Dimensions/Weight

Weight (lbs.)
1.1



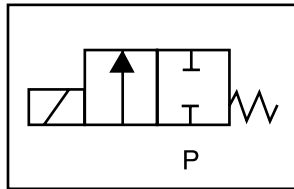
GC Valves Customer Service: 800-828-0484 (7:30am to 4pm ET) or 800-582-4232 (7:30am to 4pm PT)



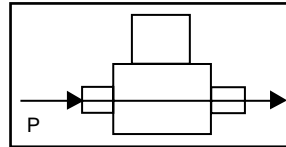
S301 – 1/8" NPT, Stainless Steel Body, Normally Closed

Valve Selection List

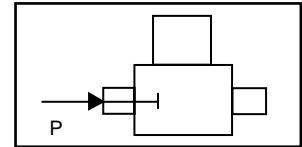
Normally Closed



Energized



De-Energized



Pipe Size NPT	Orifice Size in.	C _v	Minimum	Operating Pressure Differential (psi)								Max Fluid Temp. °F	Seal Material	Power Consumption (Watts)		Model Code (120V/60HZ — 110V/50HZ Shown)
				Maximum										AC	DC	
				Air/Gas		Water		Light Oil		Steam*						
				AC	DC	AC	DC	AC	DC	AC	DC			AC	DC	Stainless Steel Body
1/8	1/32	.03	0	2400	2400	2400	2400	—	—	150*	150*	295	EPR	10	10	S301GF02C2AC1
	3/64	.05	0	1050	1000	1050	1000	—	—	150*	150*	295	EPR	10	10	S301GF02C2AC3
	1/16	.10	0	700	300	700	300	—	—	150*	150*	295	EPR	10	10	S301GF02C2AC5
	5/64	.15	0	500	240	500	240	—	—	150*	150*	295	EPR	10	10	S301GF02C2AC7
	3/32	.21	0	400	200	400	200	—	—	150*	150*	295	EPR	10	10	S301GF02C2AC9
	7/64	.29	0	350	170	350	170	—	—	150*	150*	295	EPR	10	10	S301GF02C2AD3
	1/8	.36	0	200	140	200	140	—	—	150*	140*	295	EPR	10	10	S301GF02C2AD5
	5/32	.44	0	150	100	150	100	—	—	150*	100*	295	EPR	10	10	S301GF02C2AD7
	3/16	.65	0	100	70	100	70	—	—	100*	70*	295	EPR	10	10	S301GF02C2AE1
1/4	.85	0	50	20	50	20	—	—	50*	20*	295	EPR	10	10	S301GF02C2AE7	
1/8	1/32	.03	0	2400	2400	2400	2400	2400	2400	—	—	180	Nitrile	10	10	S301GF02N2AC1
	3/64	.05	0	1050	1000	1050	1000	1050	1000	—	—	180	Nitrile	10	10	S301GF02N2AC3
	1/16	.10	0	700	300	700	300	700	300	—	—	180	Nitrile	10	10	S301GF02N2AC5
	5/64	.15	0	500	240	500	240	500	240	—	—	180	Nitrile	10	10	S301GF02N2AC7
	3/32	.21	0	400	200	400	200	400	200	—	—	180	Nitrile	10	10	S301GF02N2AC9
	7/64	.29	0	350	170	350	170	350	170	—	—	180	Nitrile	10	10	S301GF02N2AD3
	1/8	.36	0	200	140	200	140	200	140	—	—	180	Nitrile	10	10	S301GF02N2AD5
	5/32	.44	0	150	100	150	100	150	100	—	—	180	Nitrile	10	10	S301GF02N2AD7
	3/16	.65	0	100	70	100	70	100	70	—	—	180	Nitrile	10	10	S301GF02N2AE1
1/4	.85	0	50	20	50	20	50	20	—	—	180	Nitrile	10	10	S301GF02N2AE7	
1/8	1/32	.03	0	2400	2400	2400	2400	2400	2400	—	—	230	Viton	10	10	S301GF02V2AC1
	3/64	.05	0	1050	1000	1050	1000	1050	1000	—	—	230	Viton	10	10	S301GF02V2AC3
	1/16	.10	0	700	300	700	300	700	300	—	—	230	Viton	10	10	S301GF02V2AC5
	5/64	.15	0	500	240	500	240	500	240	—	—	230	Viton	10	10	S301GF02V2AC7
	3/32	.21	0	400	200	400	200	400	200	—	—	230	Viton	10	10	S301GF02V2AC9
	7/64	.29	0	350	170	350	170	350	170	—	—	230	Viton	10	10	S301GF02V2AD3
	1/8	.36	0	200	140	200	140	200	140	—	—	230	Viton	10	10	S301GF02V2AD5
	5/32	.44	0	150	100	150	100	150	100	—	—	230	Viton	10	10	S301GF02V2AD7
	3/16	.65	0	100	70	100	70	100	70	—	—	230	Viton	10	10	S301GF02V2AE1
1/4	.85	0	50	20	50	20	50	20	—	—	230	Viton	10	10	S301GF02V2AE7	

* Class H Coil Recommended for Steam and Other High Temperature Applications

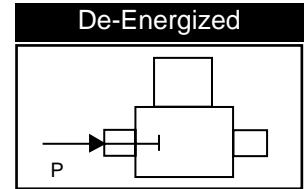
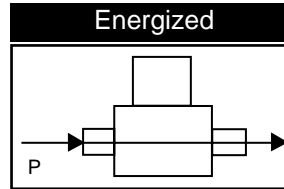
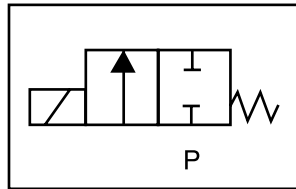
GC Valves Customer Service: 800-828-0484 (7:30am to 4pm ET) or 800-582-4232 (7:30am to 4pm PT)

S301 – 1/8" NPT, Stainless Steel Body, Normally Closed



Valve Selection List

Normally Closed



Pipe Size NPT	Orifice Size in.	C _v	Minimum	Operating Pressure Differential (psi)								Max Fluid Temp. °F	Seal Material	Power Consumption (Watts)		Model Code (120V/60HZ — 110V/50HZ Shown)
				Maximum										AC	DC	
				Air/Gas		Water		Light Oil		Steam*						
				AC	DC	AC	DC	AC	DC	AC	DC			AC	DC	
1/8	1/32	.03	0	2400	2400	2400	2400	2400	2400	150*	150*	366	Rulon	10	10	S301GF02R2AC1
	3/64	.05	0	1050	1000	1050	1000	1050	1000	150*	150*	366	Rulon	10	10	S301GF02R2AC3
	1/16	.10	0	700	300	700	300	700	300	150*	150*	366	Rulon	10	10	S301GF02R2AC5
	5/64	.15	0	500	240	500	240	500	240	150*	150*	366	Rulon	10	10	S301GF02R2AC7
	3/32	.21	0	400	200	400	200	400	200	150*	150*	366	Rulon	10	10	S301GF02R2AC9
	7/64	.29	0	350	170	350	170	350	170	150*	150*	366	Rulon	10	10	S301GF02R2AD3
	1/8	.36	0	200	140	200	140	200	140	150*	140*	366	Rulon	10	10	S301GF02R2AD5
	5/32	.44	0	150	100	150	100	150	100	150*	100*	366	Rulon	10	10	S301GF02R2AD7
	3/16	.65	0	100	70	100	70	100	70	100*	70*	366	Rulon	10	10	S301GF02R2AE1
1/4	.85	0	50	20	50	20	50	20	50*	20*	366	Rulon	10	10	S301GF02R2AE7	
1/8	1/32	.03	0	2400	2400	2400	2400	2400	2400	150*	150*	366	Teflon	10	10	S301GF02T2AC1
	3/64	.05	0	1050	1000	1050	1000	1050	1000	150*	150*	366	Teflon	10	10	S301GF02T2AC3
	1/16	.10	0	700	300	700	300	700	300	150*	150*	366	Teflon	10	10	S301GF02T2AC5
	5/64	.15	0	500	240	500	240	500	240	150*	150*	366	Teflon	10	10	S301GF02T2AC7
	3/32	.21	0	400	200	400	200	400	200	150*	150*	366	Teflon	10	10	S301GF02T2AC9
	7/64	.29	0	350	170	350	170	350	170	150*	150*	366	Teflon	10	10	S301GF02T2AD3
	1/8	.36	0	200	140	200	140	200	140	150*	140*	366	Teflon	10	10	S301GF02T2AD5
	5/32	.44	0	150	100	150	100	150	100	150*	100*	366	Teflon	10	10	S301GF02T2AD7
	3/16	.65	0	100	70	100	70	100	70	100*	70*	366	Teflon	10	10	S301GF02T2AE1
1/4	.85	0	50	20	50	20	50	20	50*	20*	366	Teflon	10	10	S301GF02T2AE7	

* Class H Coil Recommended for Steam and Other High Temperature Applications



S301 – 1/8" NPT, Stainless Steel Body, Normally Closed

Part Numbering

1	2	3	4	5	6	7	8	9	10	11	12	13
S	3	0	1	G	F	0	2	C	2	A	C	1
Series			Operating Mode	Housing*	Coil Class*	Voltage*		Seal Material	Body Material	Pipe Connection	Orifice Size	
S30			1: Normally Closed	G: Conduit	F: Class F H: Class H	02: 120/60 110/50		C: EPR N: Nitrile V: Viton R: Rulon T: Teflon	2: Stainless Steel	A: 1/8" NPT	C1: 1/32" C3: 3/64" C5: 1/16" C7: 5/64" C9: 3/32" D5: 1/8" D7: 5/32" E1: 3/16"	
* See the "Engineering Guide" for additional voltages, variations and options.												

Coil Data

Coil Family	
Type	Size
All	S4

Frequency (Hz)	60	50	
Nominal Power (VA)	Inrush	46	46
	Holding	18	19

GC Valves Customer Service: 800-828-0484 (7:30am to 4pm ET) or 800-582-4232 (7:30am to 4pm PT)