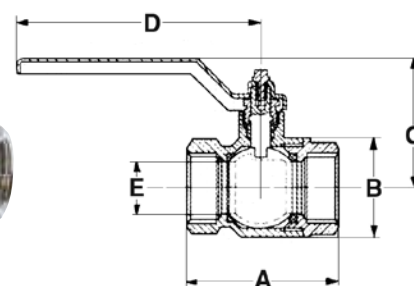


Ball Valve, Series 2940

These valves are constructed of an electroless nickel-plated brass body, a steel handle, a hardened chrome-plated brass ball, and a teflon seat. These valves are suitable for industrial, pneumatic, hydraulic, and various domestic installations. Among the various types of compounds which can be transported through these valves are steam, gasoline, fuel, oils, kerosene, acids, and compressed air.



DIMENSIONS

Electroless Nickel-Plated Mod.	NPTF Thread	A		B		C		D		E		Working PSI
		mm	in	mm	in	mm	in	mm	in	mm	in	
2940 1/4PT	1/4"	44.4	1.748	23.5	0.925	37.0	1.457	80.0	3.150	10.0	0.394	710
2940 3/8PT	3/8"	44.4	1.748	24.0	0.945	37.0	1.457	80.0	3.150	10.0	0.394	710
2940 1/2PT	1/2"	50.5	1.988	30.5	1.201	41.0	1.614	80.0	3.150	15.0	0.591	710
2940 3/4PT	3/4"	57.5	2.264	37.0	1.457	55.0	2.165	113.0	4.449	20.0	0.787	570
2940 1PT	1"	70.0	2.756	45.5	1.791	59.0	2.323	113.0	4.449	25.0	0.984	570
2940 1 1/4PT	1-1/4"	80.5	3.169	57.0	2.244	74.5	2.933	137.5	5.413	32.0	1.260	430
2940 1 1/2PT	1-1/2"	94.0	3.701	70.0	2.756	80.5	3.169	137.5	5.413	40.0	1.575	430
2940 2PT	2"	112.5	4.429	84.0	3.307	96.5	3.799	157.0	6.181	50.0	1.968	360
2940 2 1/2PT	2-1/2"	128.0	5.039	96.0	3.780	109.0	4.291	197.0	7.756	54.0	2.126	260
2940 3PT	3"	148.0	5.827	119.0	4.685	126.0	4.961	250.0	9.842	65.0	2.559	230
2940 4PT	4"	169.0	6.654	138.0	5.433	135.0	5.315	250.0	9.842	80.0	3.150	200

Min/Max working temperature: -20°C/+150°C (-4°F/+302°F)

