

Safety Relays

Category 4 Application

Emergency Stop & Gate Monitoring - Expansion Modules

RS-NAGV
6 NO Safety Outputs
4 NC Auxiliary Outputs



Emergency Stop and Gate
Monitoring Applications

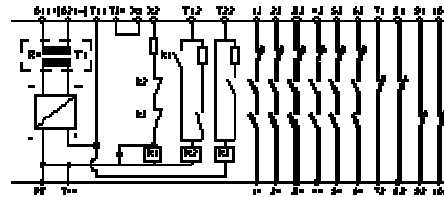
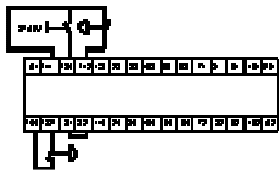
RS-NAGX 5
Expansion Module



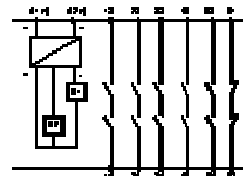
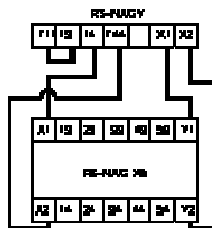
Used with a standard relay to
increase the number of outputs

Connection Diagram

RS-NAGV



RS-NAGX 5



Part Numbers	RS-NAGV	RS-NAGX 5
Operation Voltage	24V AC/DC, 120V AC, 240 V AC	24V AC/DC
Output Contacts	6 NO Safety, 4 NC Auxiliary	5 NO Safety, 1 NC Auxiliary
Max. Contact Capacity	4A (AC or DC)	6A (AC or DC)
Min. Contact Capacity	10 mA	1 mA
Switching Capacity	1500 VA (Resistive Load)	2000 VA (Resistive Load)
Power Consumption	3 VA	6 VA
Start Up Delay / Fallback	<150ms / <1000ms	50 ms
Simultaneity	75ms	-
Security	6A quick acting or 4A time lag	10A quick acting or 6A time lag
Temperature Range	-25°C to +55°C	-25°C to +55°C
Approvals	CE, TUV	CE, TUV, UL, cUL Pending