

Power Supplies

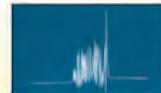
AC to DC
Power Supply Units



Coil Transient Suppressors
Electric Noise Suppression

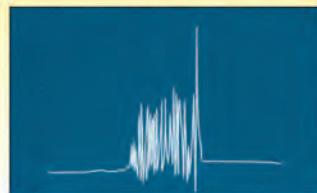


VOLTAGE TRANSIENTS NOISE



Note: It is **BEST** to Extinguish the transient at the source to avoid instantaneous transfer to the rest of the system, i.e. thru the line, or thru inductive line to line.

Extinguish Electrical Noise at the Source



POWER SUPPLIES

AC to 24VDC
Regulated Primary Switching

Single Phase 100 / 240 VAC 24VDC
5 VDC
12VDC
48VDC
1 Amp TO 20 Amp

Three Phase 480 VAC 24VDC
10 Amp to 50 Amp

- DIN RAIL MOUNT
- COMPACT DESIGN

TRANSIENT VOLTAGE SUPPRESSORS

INDUSTRIAL DESIGN

MINI

UNIVERSAL MOUNT

POWER LINE FILTERS

(120 / 230 / 480 Volt)

SINGLE PHASE, THREE PHASE
ONE AMP TO 35 AMP
SINGLE & DOUBLE STAGE

ELECTRICAL & ELECTRONIC
CONTROLS, INC.
3881 DANBURY ROAD
BREWSTER, NY 10509
845-278-5777 • FAX 845-278-5444
www.eecontrols.com
E-MAIL: info@eecontrols.com



Single Phase Power Supply Type GSA-SWD



Compact Size
UL Listed

Standard Sizes: 24 Volt DC Output
 1.25 Amp
 2.5 Amp
 5 Amp
 10 Amp
 20 Amp

Normal Input Voltages:
100 / 240VAC

Output Voltages:
24V DC -5% + 15% Adjustable

Three Phase Power Supply Type GSA-TOP



Compact Size
Conform to CE
EN 55011 c1. B (EN 61000-3-2 on request)
Standard Sizes: 24 Volt DC Output

10 Amp
20 Amp
30 Amp
40 Amp
50 Amp

Normal Input Voltage:
360 Volt thru 500 Volt

Output Voltages:
24V DC ± 10% Adjustable

Designed for Parallel Connection
Negative Connection can be grounded

Other Power Supplies Available AC to DC



Type TLM
1Ø 230V, 460V



Type TRC
3Ø 400V



Type TRTL
3Ø 400V



Type TLT
3Ø 380/400/415



Type SW
AC or DC
Input



Type SWL
1Ø 115/230/400

SERIES GSA SWD POWER SUPPLY (Single Phase) 24 VOLT DC OUTPUT

DIN RAIL MOUNT **1.25 Amp to 20 Amp**
COMPACT SIZE **30 Watt to 480 Watt**
REGULATED OUTPUT



FEATURES

Single phase input
Wide Input Range 100-240 VAC



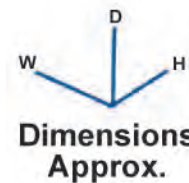
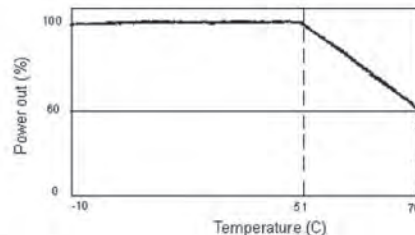
SPECIFICATIONS

Input Voltage	100 - 240 VAC
Frequency	47 - 63 Hz
Output voltage	Select: 24 VDC
Output voltage adj.	-5 +15%
Temperature rating	-10°C + 50°C
Approvals	01, 02 - UL1950, UL508 Listed, Class 2 05, 10, 20 - UL508 Listed
Protection	Internal Fuse T2A / 250VAC
Connection	01, 02 Quick Connect Terminals 05, 10, 20 Screw Clamp Terminal

Selection	GSA SWD 01	GSA SWD 02	GSA SWD 05	GSA SWD 10	GSA SWD 20
Catalog Number	D 0023 01	D 0023 02	D 0023 05	D 0023 10	D 0023 20
List Each	\$65	\$70	\$110	\$150	\$305
Output Voltage	24VDC	24VDC	24VDC	24VDC	24VDC
Output Current	1.25A	2.5A	5A	10A	20A
Noise in mV	50	50	50	100	100
Dimensions approx. mm Inch	H W D 90 40 115 (3.5") (1.6") (4.5")	H W D 90 40 115 (3.5") (1.6") (4.5")	H W D 125 63 126 (4.9") (2.5") (5.0")	H W D 125 83 126 (4.9") (3.3") (5.0")	H W D 125 175 116 (4.9") (6.9") (4.6")



**Din
Rail Mount**



Discount Schedule: DE

SERIES GSA SWD POWER SUPPLY (Single Phase) 5,12 & 48 VOLT DC OUTPUT

**DIN RAIL MOUNT
COMPACT SIZE
REGULATED OUTPUT**

5 & 10 Amp



FEATURES

Single phase input
Wide Input Range 100-240VAC



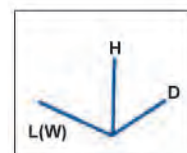
SPECIFICATIONS

Input Voltage	100 - 240 VAC
Frequency	47 - 63 Hz
Output voltage	Select: 5VDC, 12VDC, 48VDC
Temperature rating	-10° + 50°C
Approvals	02-UL1950, UL508 listed, Class 2, 05, 10, 20 - UL 508 Listed
Protection Type	Internal Fuse T2A / 250 VAC
Connection	02-Quick Connect Terminals, 05,10 ,20 -Screw Clamp Terminals

Selection	GSA SWD 02/5			GSA SWD 02/12			GSA SWD 5/12			GSA SWD 10/48			GSA SWD 20/48		
Catalog Number	D 0023 50			D 0023 51			D 0023 06			D 0023 18			D 0023 28		
List Each	\$80.00			\$80.00			\$120.00			\$180.00			\$300.00		
Output Voltage	5VDC			12VDC			12VDC			48VDC			48VDC		
Output Current	10 A			5A			10A			5A			10A		
Noise in mV	50			50			100			100			100		
Dimensions approx. mm (Inch)	H	W	D	H	W	D	H	W	D	H	W	D	H	W	D
	90 (3.5")	40 (1.6")	115 (4.5")	125 (4.9")	63 (2.5")	126 (5.0")	125 (4.9")	83 (3.3")	126 (5.0")	125 (4.9")	175 (6.9")	116 (4.6")			



**Din Rail Mount
SWD**



**Dimensions
Approx.**

Discount Schedule: DE

SERIES GSA POWER SUPPLY (Three Phase) 24 VOLT DC OUTPUT

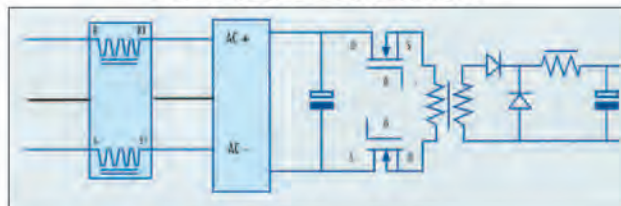
DIN RAIL MOUNT (10 & 20 Amp Only)
COMPACT SIZE
REGULATED OUTPUT



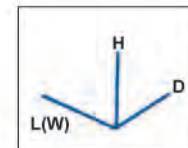
FEATURES		CE
Three phase input 480 Volt, 3Ø		
SPECIFICATIONS		
Input Voltage	360 - 500 VAC ± 15%	
Frequency	47 - 63 Hz	
Output voltage	Select: 24 VDC	
Output voltage adj.	+/- 10%	
Min. Efficiency	90%	
Temperature rating	0°C + 60°C	
Protection Type	Short circuit Autorecovery, Overcurrent	
Safety Specification	EN60950	
EMC Specification	EN55011 Class B EN50082	
Transformer Isolation	3,750 VAC 1 MIN	
Connection	Removable Terminal Blocks	

Selection Catalog Number	GSA TOP 10 D 00 2260	GSA TOP 20 D 00 2270	GSA TOP 30 D 00 2275	GSA TOP 40 D 00 2280	GSA TOP 50 D 00 2285
Output Voltage	<u>24VDC</u>	<u>24VDC</u>	<u>24VDC</u>	<u>24VDC</u>	<u>24VDC</u>
Output Current	10 A	20 A	30 A	40 A	50 A
Noise in mV	100mV	100mV	100mV	100mV	100mV
Mounting	Din Rail	Din Rail	Panel	Panel	Panel
List Each	\$460.00	\$466.00	\$643.00	\$730.00	\$780.00
Dimensions approx. mm (Inch)	L D H 230 140 85 (9.0") (5.5") (3.3")	L D H 230 140 135 (9.0") (5.5") (5.3")	L D H 294 181 175 (11.6") (7.1") (6.9")	L D H 294 181 175 (11.6") (7.1") (6.9")	L D H 294 181 175 (11.6") (7.1") (6.9")

SWITCH MODE ELECTRIC SCHEMATIC



480 VAC 3Ø TO 24 VDC



Dimensions
Approx.