

Metal-bodied limit switches

D I

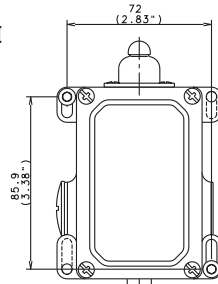
Heavy duty housing
For harsh operating environment
Robust design of actuator assembly
and contact systems
Protection class IP 65



- Robust contact assembly
- Guide bushings resistant to wear & tear
- Large range of actuators
- Snap action or slow make & break contacts
- Extended body (D II) for multiple pole contact versions
- Forced disconnections of NC contacts (type dependant)
- Protection class IP 65
- Aluminum body and lid
- 4 x 90° actuator positions (type dependant)
- Two cable entries M 20 x 1.5 (type D I)
- International approvals

- On request: Two cable entries M 20 x 1.5 (type D II) for increased contact functions

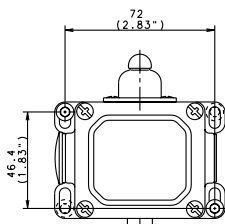
Type D II



Installation benefits

- Two cable entries for easy "through wiring"
- Spacious connection area
- Captive lid screws
- Slotted mounting holes

Type D I

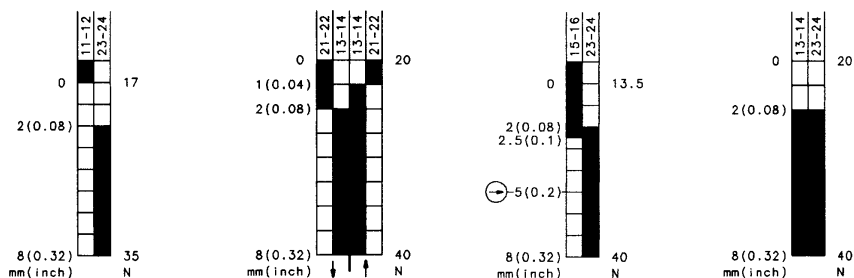
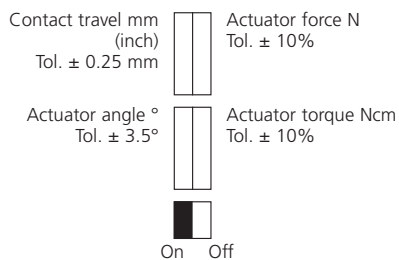


Contact configuration

Contact type	Switch function	Switch contacts	Reference	Max. voltage	Max. constant current
Slow make & break	Changeover	1NC/1NO	U1	500 V	16 A
Snap action	Changeover	1NC/1NO	SU1	500 V	16 A
Slow make & break	NC	1NC	A1Z	400 V	16 A
Slow make & break	NC	2NC	A2	400 V	16 A
Slow make & break	NC	3NC	A3Z	400 V	16 A
Slow make & break	NO	2NO	E2	400 V	16 A
Slow make & break	Changeover overlapping	1NC/1NO	UV1/UV1Z	400 V	16 A
Slow make & break	Changeover	1NC/1NO	U11	500 V	16 A
Slow make & break	Changeover	2NC/2NO	U2	500 V	16 A
Snap action	Changeover	2NC/2NO	SU2	500 V	16 A

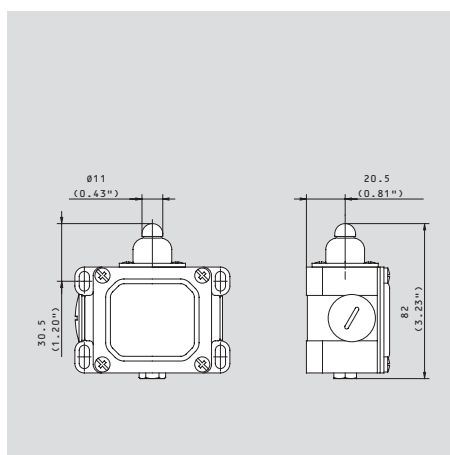
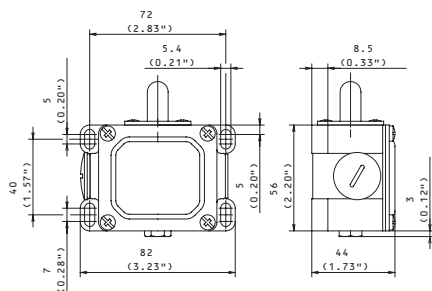


Designation	D-U1 w	D-SU1 w	D-UV1Z w	D-E2 w
Part number	604.1103.002	604.1153.156	604.1303.134	604.1803.046
Circuit diagram				
⊕ Forced disconnect IEC 947-5-1 chapter 3				
Za: not galvanically separated contacts				
Zb: galvanically separated contacts			⊕ Zb	
Slow make & break/snap-action				
Internal seal (iw)/external seal (w)	w	w	w	w



Voltage	max.	500 V AC	500 V AC	400 V AC	400 V AC
Permanent current	max.	16 A	16 A	16 A	16 A
In-rush current complies with standards		●	●	●	●
IEC 947-5-1 AC 15/DC 13					
Switching frequency	max.	100/min.	100/min.	100/min.	100/min.
Mechanical life – number of switching actions		10 x 10 ⁶	10 x 10 ⁶	10 x 10 ⁶	10 x 10 ⁶
Operating temperature	min./max.	-30 °C/+80 °C -22 °F/+176 °F	-30 °C/+80 °C -22 °F/+176 °F	-30 °C/+80 °C -22 °F/+176 °F	-30 °C/+80 °C -22 °F/+176 °F
Approvals		CSA	CSA	CSA	CSA
Weight		0.27 kg/0.60 lb	0.27 kg/0.60 lb	0.27 kg/0.60 lb	0.27 kg/0.60 lb
Delivery: ex-stock/built to order		●/-	●/-	●/-	●/-

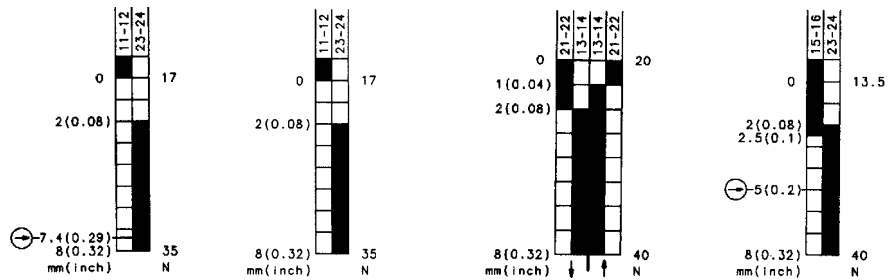
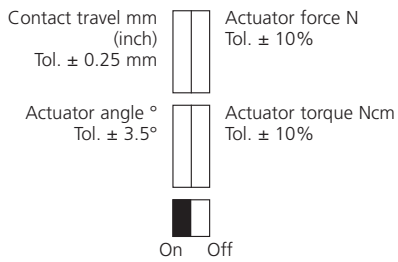
All dimensions in mm (inch)





Designation
Part number
 Circuit diagram
 ⊕ Forced disconnect to IEC 947-5-1 chapter 3
 Za: not galvanically separated contacts
 Zb: galvanically separated contacts
 Slow make & break/snap-action
 Internal seal (iw)/external seal (w)

D-U1Z Rw	D-U1 Rw	D-SU1 Rw	D-UV1Z Rw
604.1118.229	604.1118.008	604.1168.162	604.1318.140
⊕ Za	-	-	⊕ Zb
●/-	●/-	-/●	●/-
w	w	w	w



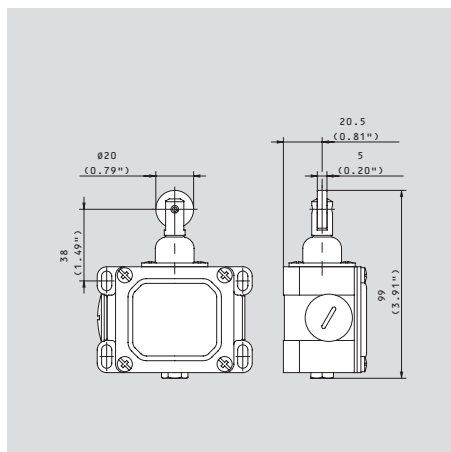
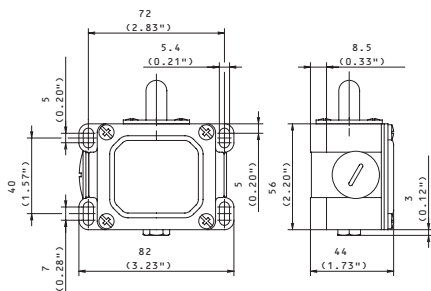
Voltage max.
 Permanent current max.
 In-rush current complies with standards
 IEC 947-5-1 AC 15/DC 13
 Switching frequency max.
 Mechanical life – number of switching actions
 Operating temperature min./max.

500 V AC	500 V AC	500 V AC	400 V AC
16 A	16 A	16 A	16 A
●	●	●	●
100/min.	100/min.	100/min.	100/min.
10 x 10 ⁶	10 x 10 ⁶	10 x 10 ⁶	10 x 10 ⁶
-30 °C/+80 °C	-30 °C/+80 °C	-30 °C/+80 °C	-30 °C/+80 °C
-22 °F/+176 °F	-22 °F/+176 °F	-22 °F/+176 °F	-22 °F/+176 °F

Approvals
 Weight
 Delivery: ex-stock/built to order

CSA	CSA	CSA	CSA
0.28 kg/0.62 lb	0.28 kg/0.62 lb	0.28 kg/0.62 lb	0.28 kg/0.62 lb
●/-	●/-	●/-	●/-

All dimensions in mm (inch)





D-U1 AH
604.1135.019

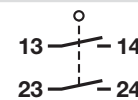
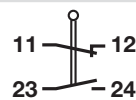
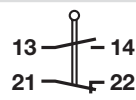
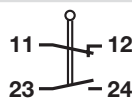
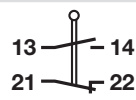
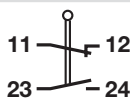
D-SU1 AH
604.1185.173

D-U1 Hw
604.1121.010

D-SU1 Hw
604.1171.164

D-U1 Pw
604.1113.006

D-E2 Pw
604.1813.050



-
●/-
iw

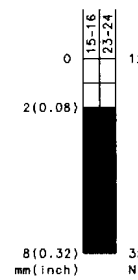
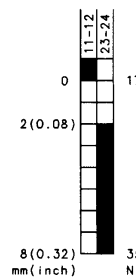
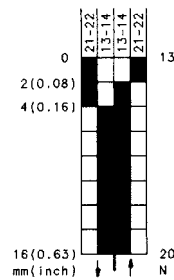
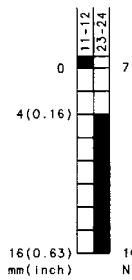
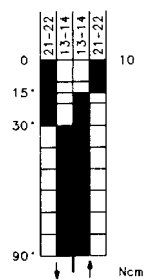
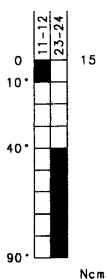
-
-/●
iw

-
●/-
W

-
-/●
W

-
●/-
W

-
●/-
W



500 V AC
16 A
●

500 V AC
16 A
●

500 V AC
16 A
●

500 V AC
16 A
●

500 V AC
16 A
●

400 V AC
16 A
●

100/min.
10 x 10⁶
-30 °C/+80 °C
-22 °F/+176 °F

100/min.
10 x 10⁶
-30 °C/+80 °C
-22 °F/+176 °F

100/min.
10 x 10⁶
-30 °C/+80 °C
-22 °F/+176 °F

100/min.
10 x 10⁶
-30 °C/+80 °C
-22 °F/+176 °F

100/min.
10 x 10⁶
-30 °C/+80 °C
-22 °F/+176 °F

100/min.
10 x 10⁶
-30 °C/+80 °C
-22 °F/+176 °F

CSA

CSA

CSA

CSA

CSA

CSA

0.40 kg/0.88 lb
●/-

0.40 kg/0.88 lb
●/-

0.33 kg/0.73 lb
●/-

0.33 kg/0.73 lb
●/-

0.28 kg/0.62 lb
●/-

0.28 kg/0.62 lb
●/-

